

**OHIO TURNPIKE AND
INFRASTRUCTURE COMMISSION**

ADDENDUM NO. 2

PROJECT NO. 43-17-06
BRIDGE REPAIR, REHABILITATION, AND WIDENING
OHIO TURNPIKE OVER KIRK ROAD, M.P. 222.8,
OHIO TURNPIKE OVER STATE ROUTE 7, M.P. 232.6,
OHIO TURNPIKE RAMP OVER STATE ROUTE 7, M.P. 232.6,
OHIO TURNPIKE OVER OHIO TURNPIKE RAMP, M.P. 232.9,
OHIO TURNPIKE OVER GARFIELD ROAD, M.P. 240.8,
MAHONING COUNTY, OHIO

OPENING DATE: 2:00 P.M. (EASTERN TIME), FEBRUARY 28, 2017

ALL BIDS MUST BE ELECTRONICALLY SUBMITTED THROUGH BID EXPRESS

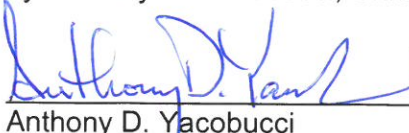
ATTENTION OF BIDDERS IS DIRECTED TO:

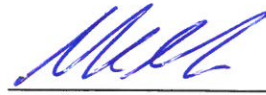
QUESTIONS AND ANSWERS THROUGH 11:00 AM ON FEBRUARY 23, 2017

-AND-

REVISIONS TO PLAN SHEET NOS. 6, 7, 8, 9, 13 and 14

Issued by the Ohio Turnpike and Infrastructure Commission on February 23, 2017. Issuance authorized by Anthony D. Yacobucci, Chief Engineer, and Mark R. Musson, Director of Contracts Administration.


Anthony D. Yacobucci 2/23/17
Date


Mark R. Musson 2/23/17
Date

OHIO TURNPIKE AND INFRASTRUCTURE COMMISSION
ADDENDUM NO. 2
PROJECT NO. 43-17-06

QUESTIONS AND ANSWERS THROUGH 11:00 AM ON FEBRUARY 23, 2017

Q#10 There are several traffic control items noted on a pages 5 and 5a of the plans that require a unit price bid, but the items and quantities have not been carried to the General Summary and Bid Proposal. These items include additional signage, replacement signage, work zone impact attenuators and portable changeable message signs. Will the OTIC be issuing an addendum to add these bids items?

A#10 The pay items that were missing from the General Summary and the Estimated Quantities Worksheet have been added to the General Summary table on Plan Sheet 2, the Estimated Quantity Worksheet and the Bid Form Schedule of Items. Further, certain requirements from the Standard Drawings are carried through to the Plan Sheets under the revisions to Plan Sheets Nos. 6, 7, 8, 9, 13 and 14.

Addendum No. 2 to Contract 43-17-06:

(Firm Name)

(Signature)

(Printed Name)

Date: _____

EQ001.dwg: 2/23/17 - 9:59am

GENERAL SUMMARY									
ITEM NO.	QUANTITY	UNIT	ITEM DESCRIPTION	GENERAL	M.P. 222.8	M.P. 232.6	M.P. 232.6 RAMP	M.P. 232.9	MP 240.8
GENERAL									
IB.ART.6	LUMP	LUMP SUM	PREMIUM FOR CONTRACT PERFORMANCE BOND AND PAYMENT BOND	LUMP					
SP 614	LUMP	LUMP SUM	MAINTAINING TRAFFIC	LUMP					
SP 619	LUMP	LUMP SUM	FIELD OFFICE	LUMP					
SP 623	LUMP	LUMP SUM	CONSTRUCTION LAYOUT SURVEY	LUMP					
624	LUMP	LUMP SUM	MOBILIZATION	LUMP					
ROADWAY									
202	384	SQ. YD.	APPROACH SLAB REMOVED					68	316
202	709	FOOT	GUARDRAIL REMOVED						709
202	8	EACH	BRIDGE TERMINAL ASSEMBLY REMOVED						8
203	506	CU. YD.	EXCAVATION						506
204	717	SQ. YD.	SUBGRADE COMPACTION						717
254	728	SQ. YD.	PAVEMENT PLANING, ASPHALT CONCRETE						728
301	120	CU. YD.	6" ASPHALT CONCRETE BASE, PG64-22						120
SP 304	120	CU. YD.	AGGREGATE BASE						120
407	140	GAL.	NON-TRACKING TACK COAT						140
441	50	CU. YD.	1-1/4" ASPHALT CONCRETE SURFACE COURSE, TYPE 1 (448), PG64-22						50
441	70	CU. YD.	1-3/4" ASPHALT CONCRETE INTERMEDIATE COURSE, TYPE 2 (448)						70
526	384	SQ. YD.	REINFORCED CONCRETE APPROACH SLABS (T=12")					68	316
605	620	FOOT	4" BASE PIPE UNDERDRAINS						620
606	4	EACH	MGS BRIDGE TERMINAL ASSEMBLY, TYPE 1						4
606	4	EACH	MGS BRIDGE TERMINAL ASSEMBLY, TYPE 2						4
606	800	FOOT	GUARDRAIL, TYPE MGS						800
614	10	CU. YD.	ASPHALT CONCRETE FOR MAINTAINING TRAFFIC						10
614	19.2	MILE	WORK ZONE EDGE LINE		4	4		3.2	8
614	540	DAYS	PORTABLE CHANGEABLE MESSAGE SIGN, AS PER PLAN						540
614	10	EACH	REPLACEMENT SIGN	10					
614	2	EACH	WORK ZONE IMPACT ATTENUATOR FOR 24" WIDE HAZARDS (BIDIRECTIONAL)						2
622	10250	FOOT	PORTABLE CONCRETE BARRIER		2720	2960		2200	2370
630	16	SQ FT	SIGNING MISC.: ADDITIONAL SIGNS, GROUND MOUNTED, AS DIRECTED BY THE ENGINEER	16					
642	1.10	MILE	EDGE LINE, 6", TYPE 1		0.20	0.24	0.14	0.16	0.36
642	0.06	MILE	EDGE LINE, 8", TYPE 1					0.06	
642	0.46	MILE	LANE LINE, 6", TYPE 1		0.10	0.12		0.06	0.18
SPECIAL	8000	FOOT	"SNAP" MILL AND FILL						8000
SPECIAL	1.50	MILE	SONIC NAP ALERT PATTERN						1.50

1

2

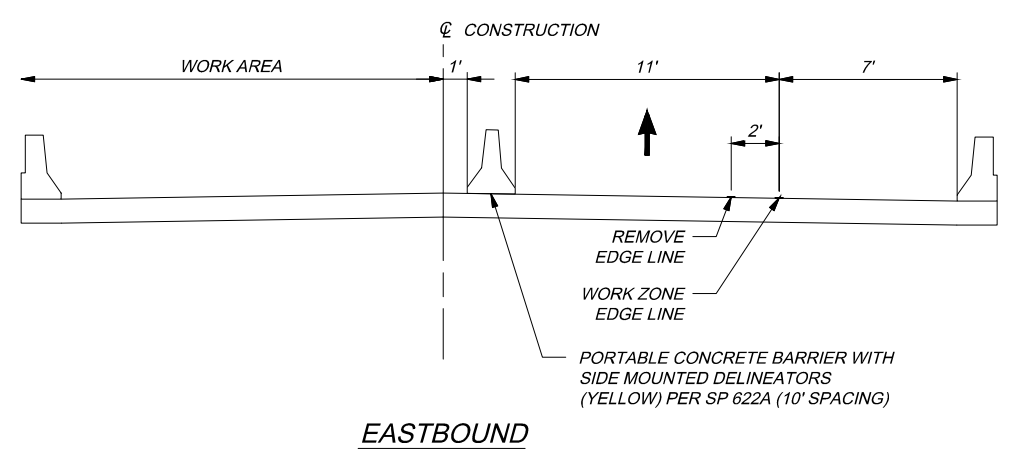
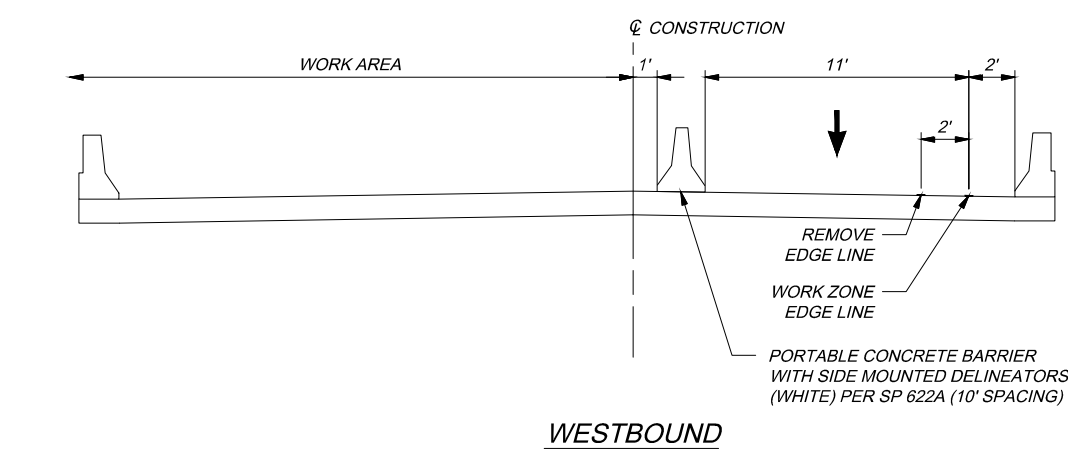
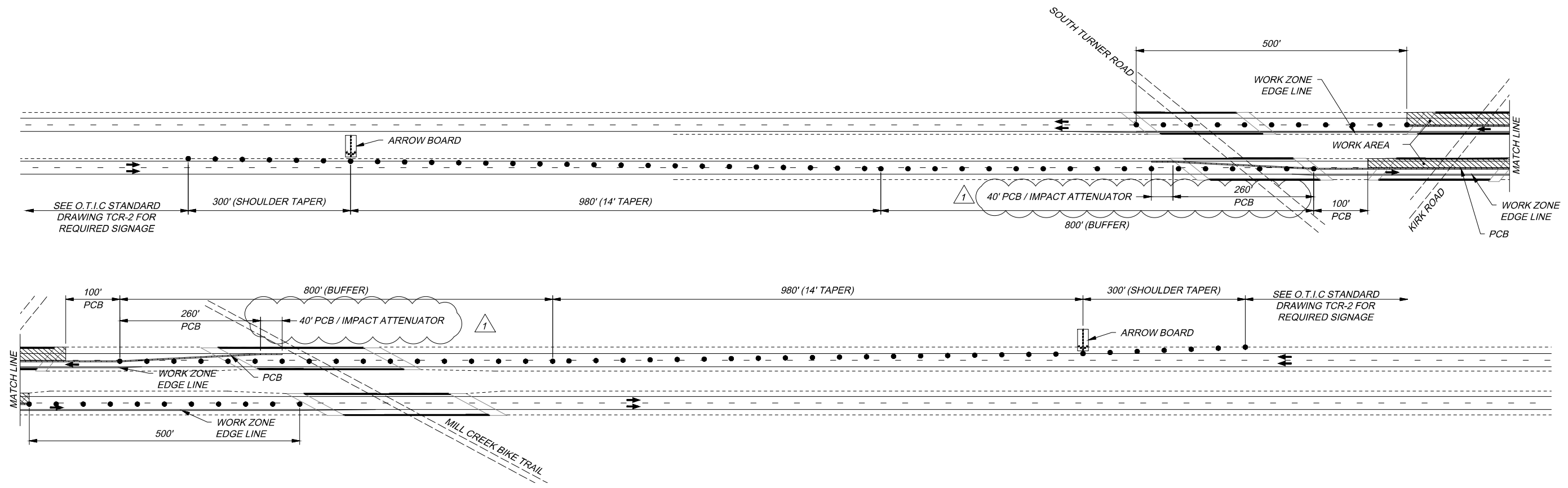
2

NOTES:

- FOR M.P. 222.8 EASTBOUND AND WESTBOUND QUANTITIES, SEE SHEET 19 OF 99.
- FOR M.P. 232.6 EASTBOUND AND WESTBOUND QUANTITIES, SEE SHEET 26 OF 99.
- FOR M.P. 232.6 RAMP QUANTITIES, SEE SHEET 37 OF 99.
- FOR M.P. 232.9 EASTBOUND AND WESTBOUND QUANTITIES, SEE SHEET 43 OF 99.
- FOR M.P. 240.8 EASTBOUND AND WESTBOUND QUANTITIES, SEE SHEET 61 OF 99.

PROJECT 43-17-06 DATE: 1/5/17	GENERAL SUMMARY MAHONING COUNTY		DESIGNER ELS	CHECKED FBW IN CHARGE	NO. 1 2	REVISIONS ADDENDUM NO. 1 ADDENDUM NO. 2	BY DATE ABD 2/15/17 ELS 2/23/17	DESIGN AGENCY ms consultants, inc. 2221 Schrock Road Columbus, Ohio 43229
	M.P. 222.8 TP M.P. 240.8	OHIO TURNPIKE	OHIO TURNPIKE	2 99	OHIO TURNPIKE			

222.8 - MD001.dwg: 2/23/17 - 11:12am



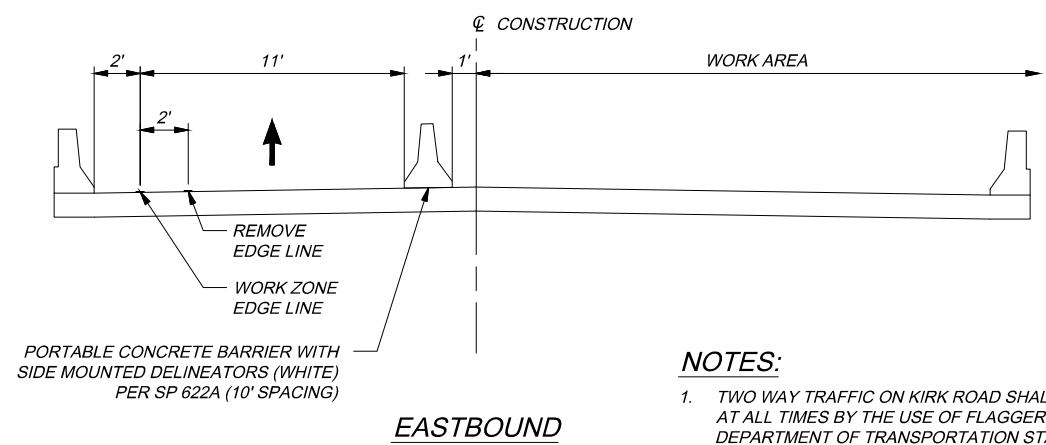
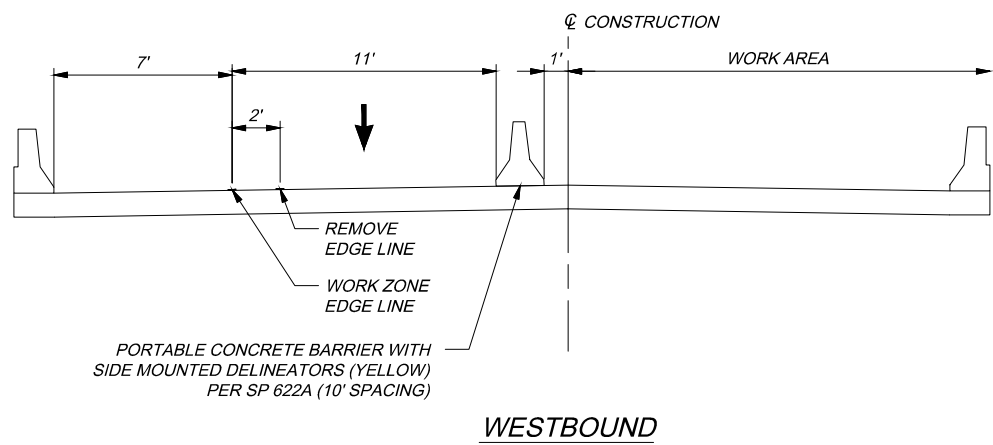
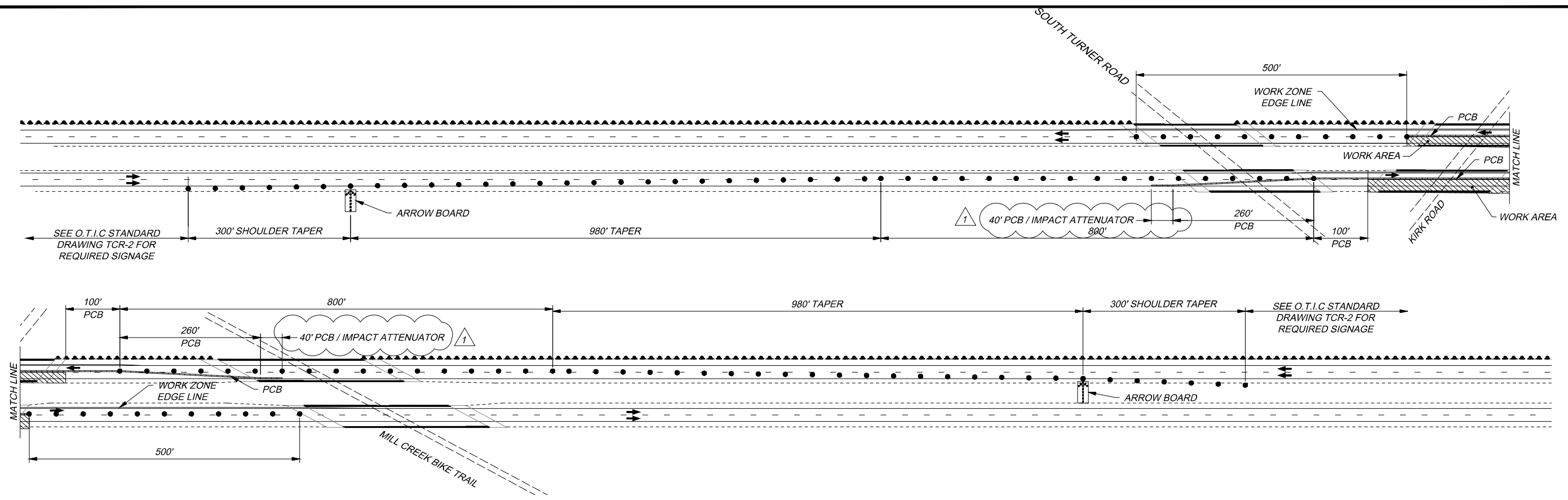
LEGEND

	ARROW BOARD, TYPE C
	DRUMS
	WORK AREA
	TRAFFIC FLOW

- NOTES:**
- TWO WAY TRAFFIC ON KIRK ROAD SHALL BE MAINTAINED AT ALL TIMES BY THE USE OF FLAGGERS. REFER TO OHIO DEPARTMENT OF TRANSPORTATION STANDARD CONSTRUCTION DRAWING MT-97.10.
 - ALL TRAFFIC CONTROL DEVICES SHALL CONFORM TO THE CURRENT EDITION OF THE "OHIO MANUAL OF UNIFORM TRAFFIC CONTROL DEVICES"
 - THE CONTRACTOR SHALL FURNISH, ERECT, MAINTAIN AND SUBSEQUENTLY REMOVE ALL BARRICADES, SIGNS, SIGN SUPPORTS AND INCIDENTALS AS SHOWN ON THIS SHEET.
 - PAYMENT FOR ALL LABOR, EQUIPMENT AND MATERIALS SHALL BE CONSIDERED INCIDENTAL TO SP 614 MAINTAINING TRAFFIC UNLESS ITEMIZED SEPARATELY.
 - LANE OR SHOULDER CLOSURES REQUIRED ON KIRK ROAD FOR CONSTRUCTION ACTIVITIES SHALL BE APPROVED BY MAHONING COUNTY ENGINEER PRIOR TO IMPLEMENTATION.
 - ALL SIGNAGE PER OTIC STANDARD DRAWING TCR-2.
 - SINGLE LANE CLOSURE WITH PORTABLE BARRIER SHALL BE IMPLEMENTED AS SHOWN ABOVE AND ON STANDARD DRAWING TCR-2.1.

DESIGN AGENCY: **KS ASSOCIATES**
 PROJECT: **MAINTENANCE OF TRAFFIC - PHASE 1 OHIO TURNPIKE OVER KIRK ROAD**
 DATE: **1/5/17**
 M.P. **222.8**
 COUNTY: **MAHONING COUNTY**
 REVISIONS: **ADDENDUM 2**
 BY: **MTG** DATE: **2/23/17**
 NO. **1**
 CHECKED: **MEM** IN CHARGE: **MJM**
 DESIGNED: **MTG** DRAWN: **MTG**
 PROJECT: **43-17-06**
 DATE: **1/5/17**
 SHEET: **6** OF **99**
OHIO TURNPIKE AND INFRASTRUCTURE COMMISSION

222.8 - MD002.dwg: 2/23/17 - 11:15am

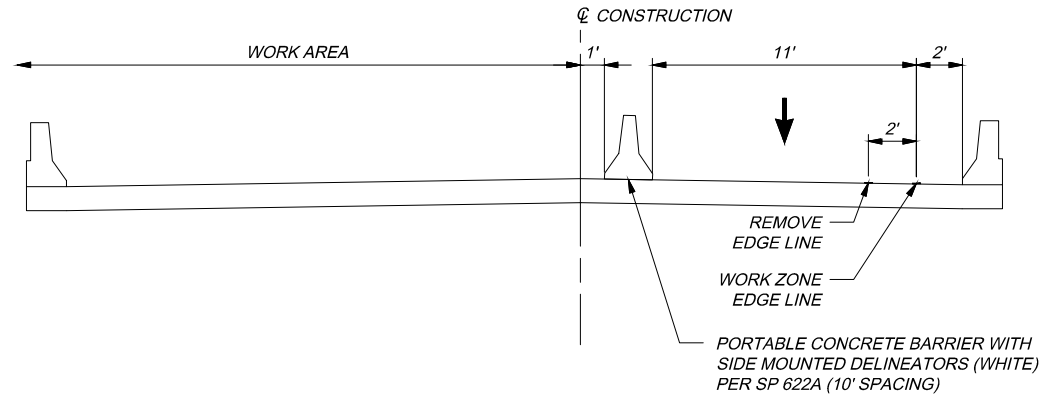
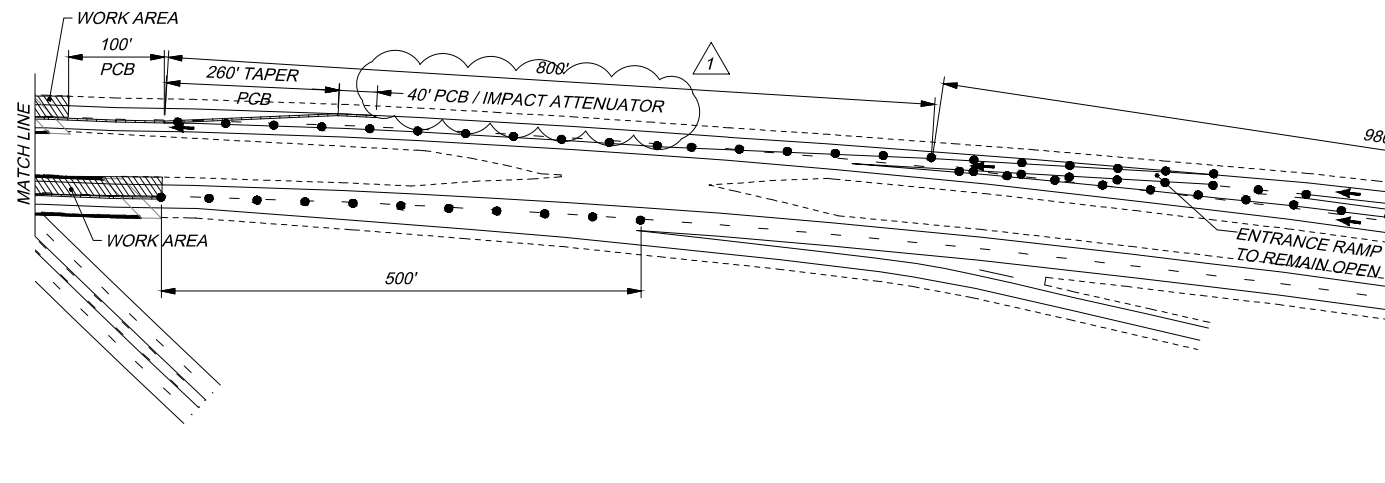
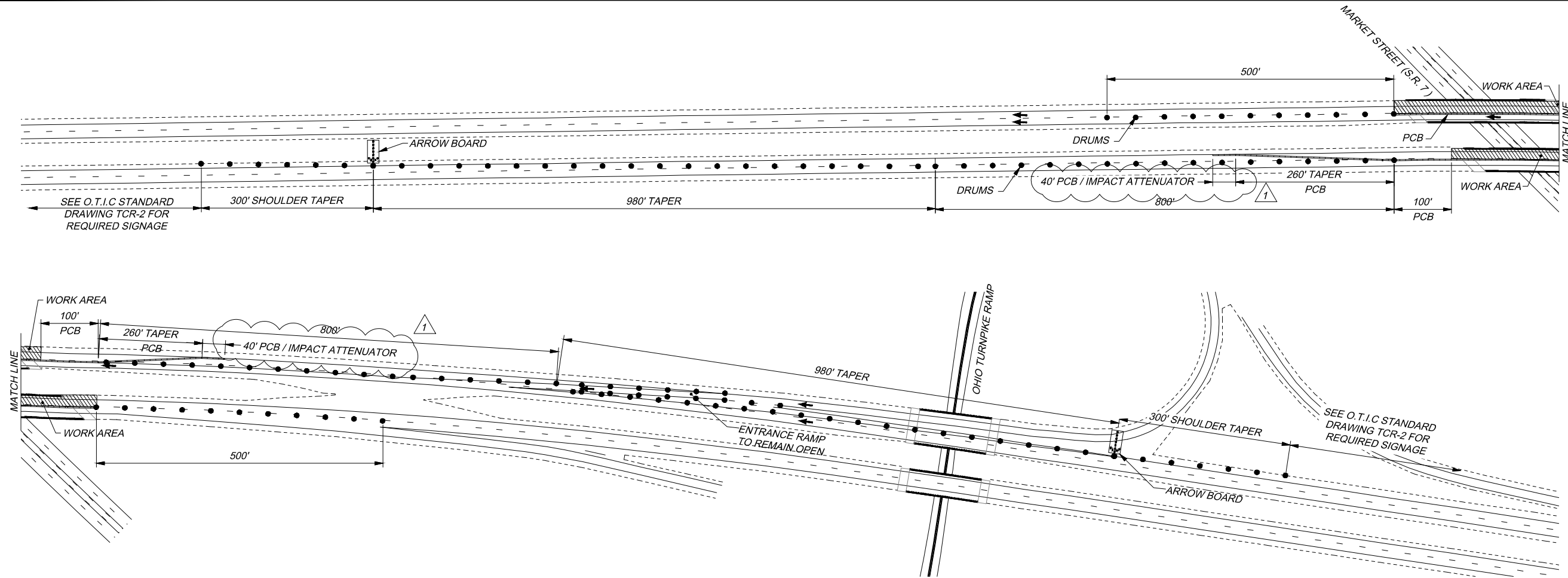


- NOTES:**
- TWO WAY TRAFFIC ON KIRK ROAD SHALL BE MAINTAINED AT ALL TIMES BY THE USE OF FLAGGERS. REFER TO OHIO DEPARTMENT OF TRANSPORTATION STANDARD CONSTRUCTION DRAWING MT-97.10.
 - ALL TRAFFIC CONTROL DEVICES SHALL CONFORM TO THE CURRENT EDITION OF THE "OHIO MANUAL OF UNIFORM TRAFFIC CONTROL DEVICES"
 - THE CONTRACTOR SHALL FURNISH, ERECT, MAINTAIN AND SUBSEQUENTLY REMOVE ALL BARRICADES, SIGNS, SIGN SUPPORTS AND INCIDENTALS AS SHOWN ON THIS SHEET.
 - PAYMENT FOR ALL LABOR, EQUIPMENT AND MATERIALS SHALL BE CONSIDERED INCIDENTAL TO SP 614 MAINTAINING TRAFFIC UNLESS ITEMIZED SEPARATELY.
 - LANE OR SHOULDER CLOSURES REQUIRED ON KIRK ROAD FOR CONSTRUCTION ACTIVITIES SHALL BE APPROVED BY MAHONING COUNTY ENGINEER PRIOR TO IMPLEMENTATION.
 - ALL SIGNAGE PER OTIC STANDARD DRAWING TCR-2.
 - SINGLE LANE CLOSURE WITH PORTABLE BARRIER SHALL BE IMPLEMENTED AS SHOWN ABOVE AND ON STANDARD DRAWING TCR-2.1.

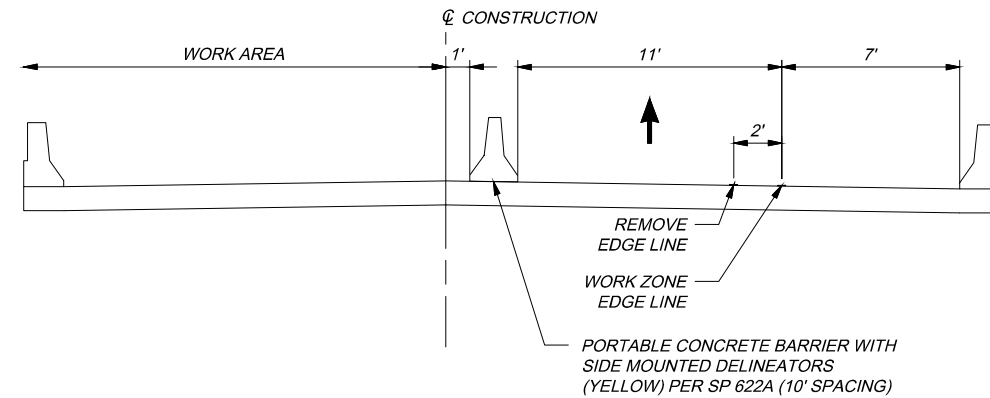
- LEGEND**
- ARROW BOARD, TYPE C
 - DRUMS
 - WORK AREA
 - TRAFFIC FLOW

MAINTENANCE OF TRAFFIC - PHASE 2		OHIO TURNPIKE AND INFRASTRUCTURE COMMISSION
OHIO TURNPIKE OVER KIRK ROAD		MAHONING COUNTY
PROJECT 43-17-06	DATE: 1/5/17	M.P. 222.8
DESIGNED MTG	DRAWN MTG	M.P. 222.8
CHECKED MEM	IN CHARGE MJM	NO. 1
REVISIONS ADDENDUM 2		
BY DATE MTG 2/23/17		
DESIGN AGENCY KS ASSOCIATES		OHIO TURNPIKE

232.6 - MD001.dwg: 2/23/17 - 11:18am



WESTBOUND



EASTBOUND

NOTES:

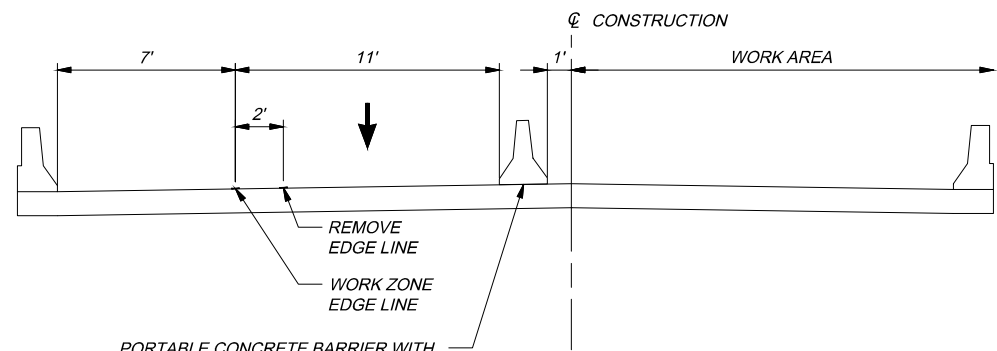
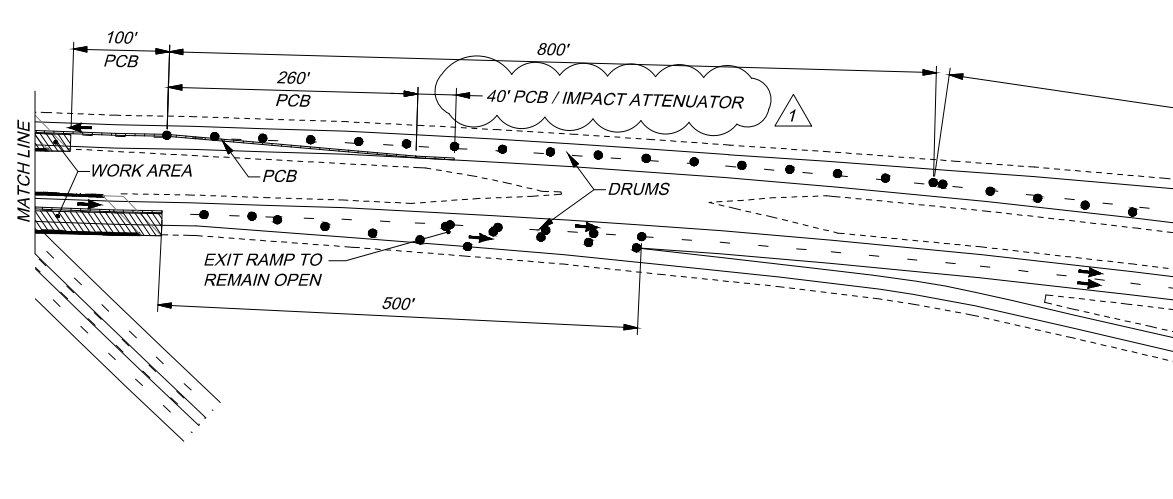
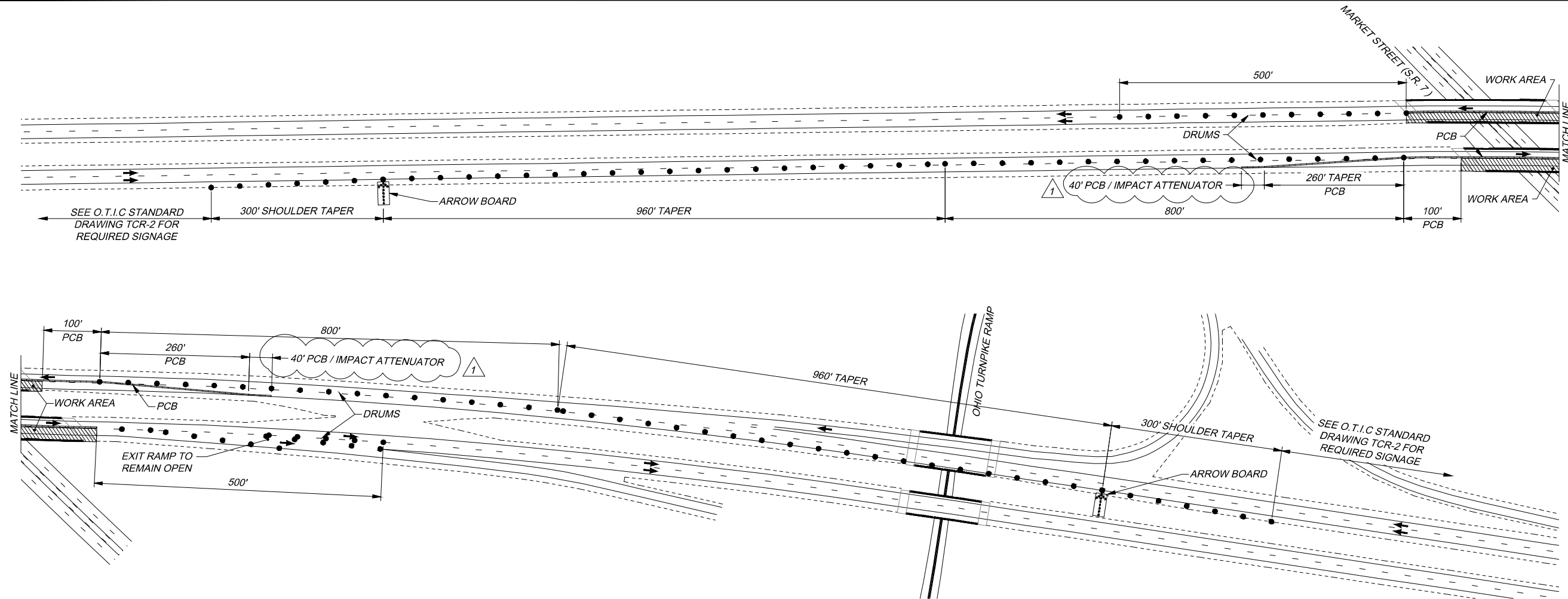
1. ALL TRAFFIC CONTROL DEVICES SHALL CONFORM TO THE CURRENT EDITION OF THE "OHIO MANUAL OF UNIFORM TRAFFIC CONTROL DEVICES"
2. THE CONTRACTOR SHALL FURNISH, ERECT, MAINTAIN AND SUBSEQUENTLY REMOVE ALL BARRICADES, SIGNS, SIGN SUPPORTS AND INCIDENTALS AS SHOWN ON THIS SHEET.
3. PAYMENT FOR ALL LABOR, EQUIPMENT AND MATERIALS SHALL BE CONSIDERED INCIDENTAL TO SP 614 MAINTAINING TRAFFIC UNLESS ITEMIZED SEPARATELY.
4. LANE OR SHOULDER CLOSURES REQUIRED ON STATE ROUTE 7 FOR CONSTRUCTION ACTIVITIES SHALL BE APPROVED BY ODOT PRIOR TO IMPLEMENTATION.
5. ONE LANE MUST BE MAINTAINED IN EACH DIRECTION ON STATE ROUTE 7 AT ALL TIMES.
6. LANE OR SHOULDER CLOSURES REQUIRED ON STATE ROUTE 7 SHALL FOLLOW ALL APPLICABLE ODOT STANDARD CONSTRUCTION DRAWINGS.
7. ALL SIGNAGE PER OTIC STANDARD DRAWING TCR-2.
8. SINGLE LANE CLOSURE WITH PORTABLE BARRIER SHALL BE IMPLEMENTED AS SHOWN ABOVE AND ON STANDARD DRAWING TCR-2.1.

LEGEND

- ARROW BOARD, TYPE C
- DRUMS
- WORK AREA
- TRAFFIC FLOW

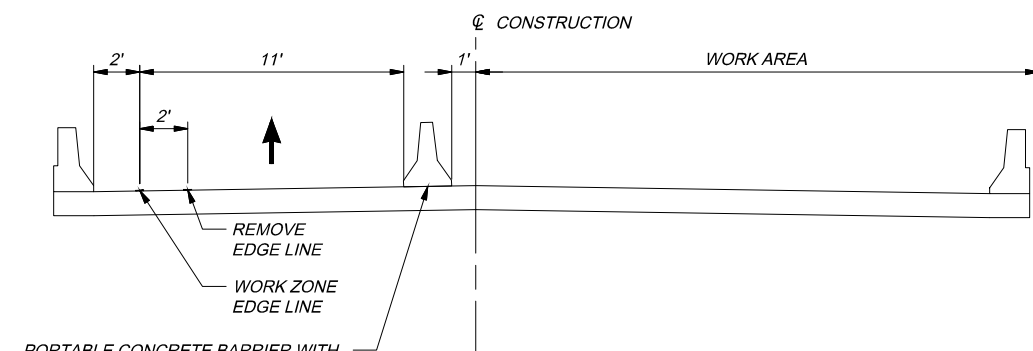
 KS ASSOCIATES 14000 W. STATE ROUTE 140 DAYTON, OH 45424 P 937.233.7700 F 937.233.7700 WWW.KSASSOCIATES.COM	DESIGN AGENCY BY DATE MTG 2/23/17	REVISIONS ADDENDUM 2	NO. 1	CHECKED MEM IN CHARGE MTG MJM	MAINTENANCE OF TRAFFIC - PHASE 1 OHIO TURNPIKE OVER STATE ROUTE 7 MAHONING COUNTY M.P. 232.6	PROJECT 43-17-06 DATE: 1/5/17	8 99
OHIO TURNPIKE AND INFRASTRUCTURE COMMISSION							
OHIO TURNPIKE							

232.6 - MD002.dwg: 2/23/17 - 11:21am



PORTABLE CONCRETE BARRIER WITH SIDE MOUNTED DELINEATORS (YELLOW) PER SP 622A (10' SPACING)

WESTBOUND



PORTABLE CONCRETE BARRIER WITH SIDE MOUNTED DELINEATORS (WHITE) PER SP 622A (10' SPACING)

EASTBOUND

NOTES:

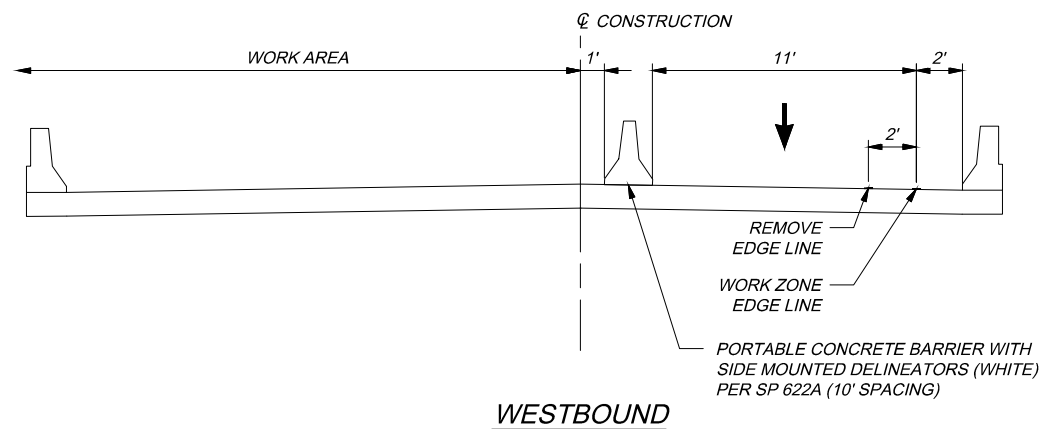
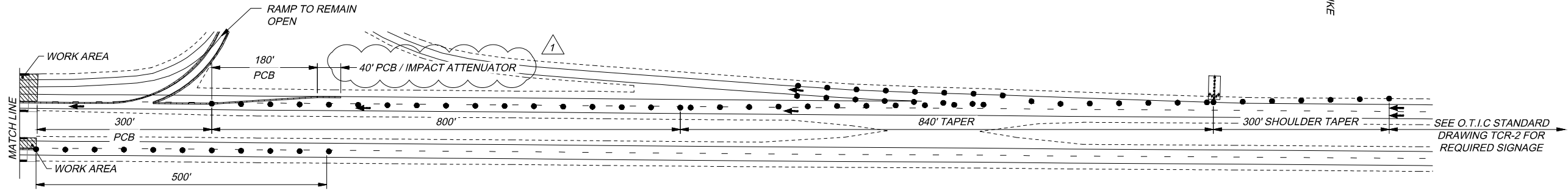
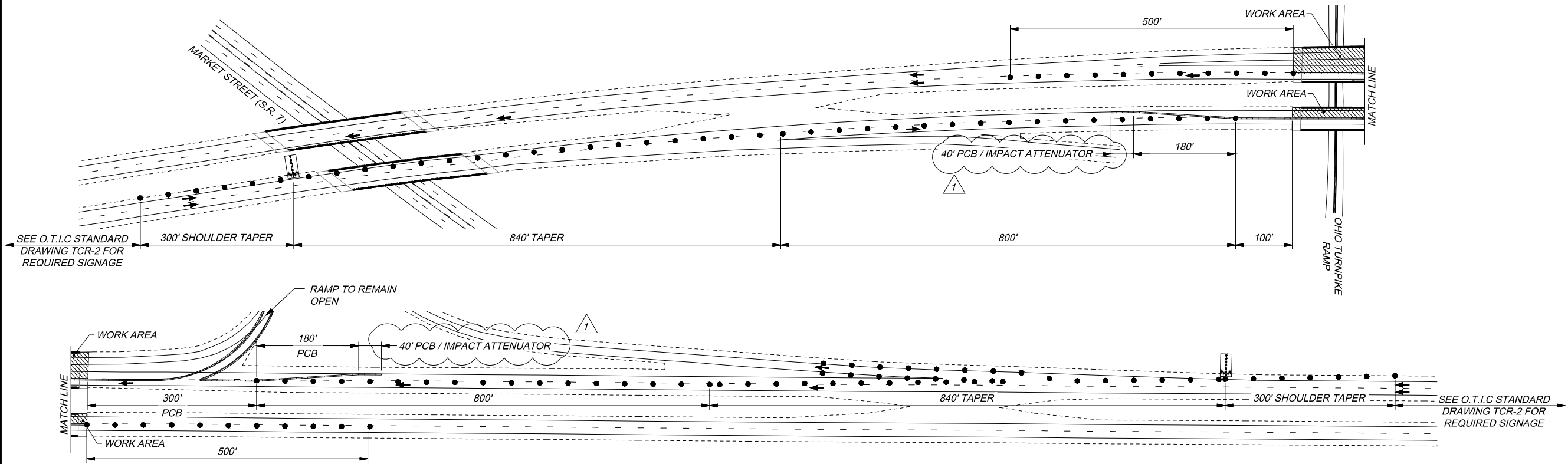
- ALL TRAFFIC CONTROL DEVICES SHALL CONFORM TO THE CURRENT EDITION OF THE "OHIO MANUAL OF UNIFORM TRAFFIC CONTROL DEVICES"
- THE CONTRACTOR SHALL FURNISH, ERECT, MAINTAIN AND SUBSEQUENTLY REMOVE ALL BARRICADES, SIGNS, SIGN SUPPORTS AND INCIDENTALS AS SHOWN ON THIS SHEET.
- PAYMENT FOR ALL LABOR, EQUIPMENT AND MATERIALS SHALL BE CONSIDERED INCIDENTAL TO SP 614 MAINTAINING TRAFFIC UNLESS ITEMIZED SEPARATELY.
- LANE OR SHOULDER CLOSURES REQUIRED ON STATE ROUTE 7 FOR CONSTRUCTION ACTIVITIES SHALL BE APPROVED BY ODOT PRIOR TO IMPLEMENTATION.
- ONE LANE MUST BE MAINTAINED IN EACH DIRECTION ON STATE ROUTE 7 AT ALL TIMES.
- LANE OR SHOULDER CLOSURES REQUIRED ON STATE ROUTE 7 SHALL FOLLOW ALL APPLICABLE ODOT STANDARD CONSTRUCTION DRAWINGS.
- ALL SIGNAGE PER OTIC STANDARD DRAWING TCR-2.
- SINGLE LANE CLOSURE WITH PORTABLE BARRIER SHALL BE IMPLEMENTED AS SHOWN ABOVE AND ON STANDARD DRAWING TCR-2.1.

LEGEND

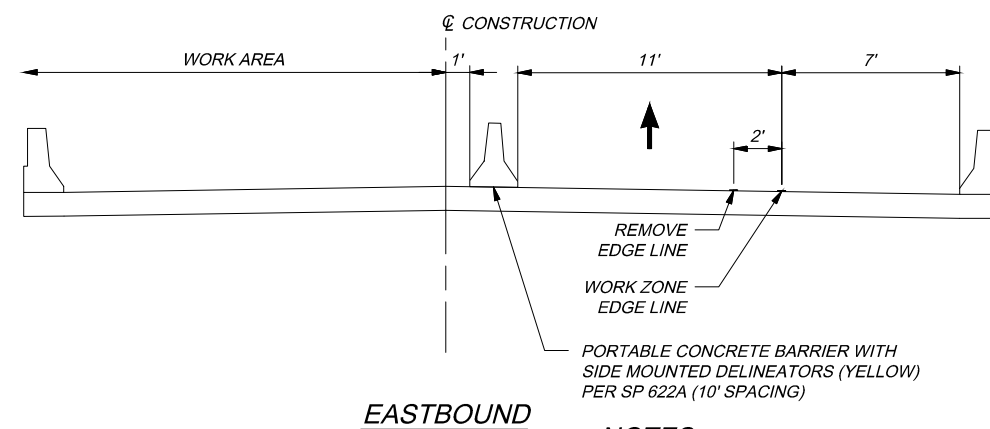
- ARROW BOARD, TYPE C
- DRUMS
- WORK AREA
- TRAFFIC FLOW

DESIGN AGENCY		BY DATE	
KS ASSOCIATES, INC. 14500 W. STATE ROUTE 149 DUBLIN, OH 43017 P 614 885 7700 F 614 885 7700		MTG 2/23/17	
DESIGNED		CHECKED	
MTG DRAWN		MEM IN CHARGE	
REVISIONS		NO.	
ADDENDUM 2		1	
PROJECT 43-17-06		MAHONING COUNTY	
DATE: 1/5/17		M.P. 232.6	
PROJECT 43-17-06		M.A.I.N.T.E.N.A.N.C.E. O.F. T.R.A.F.F.I.C. - P.H.A.S.E. 2	
DATE: 1/5/17		O.H.I.O. T.U.R.N.P.I.K.E. O.V.E.R. S.T.A.T.E. R.O.U.T.E. 7	
PROJECT 43-17-06		M.A.H.O.N.I.N.G. C.O.U.N.T.Y.	
DATE: 1/5/17		M.P. 232.6	
PROJECT 43-17-06		M.A.I.N.T.E.N.A.N.C.E. O.F. T.R.A.F.F.I.C. - P.H.A.S.E. 2	
DATE: 1/5/17		O.H.I.O. T.U.R.N.P.I.K.E. O.V.E.R. S.T.A.T.E. R.O.U.T.E. 7	
PROJECT 43-17-06		M.A.H.O.N.I.N.G. C.O.U.N.T.Y.	
DATE: 1/5/17		M.P. 232.6	

232.9 - MD001.dwg: 2/23/17 - 11:23am



WESTBOUND



EASTBOUND

NOTES

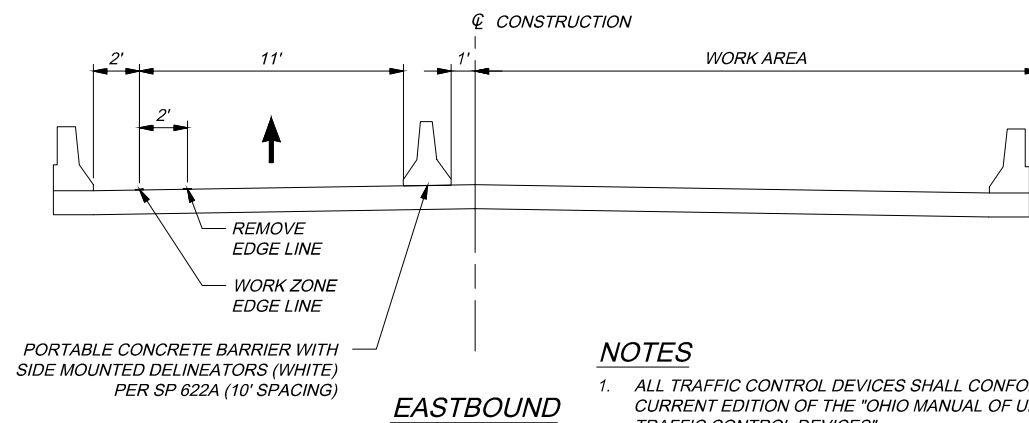
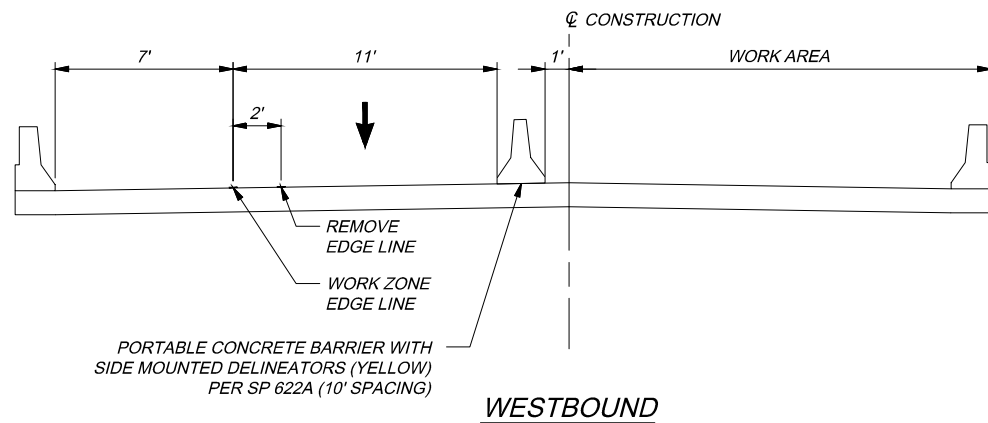
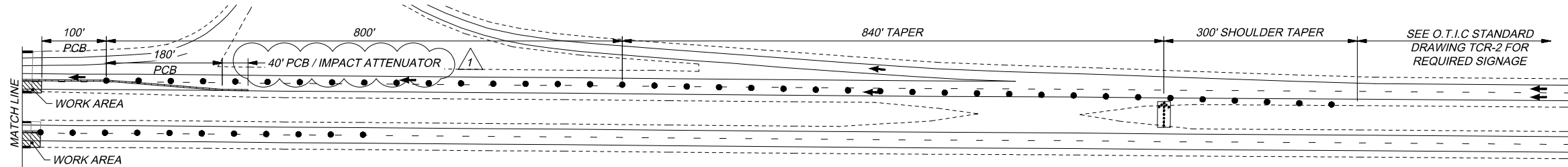
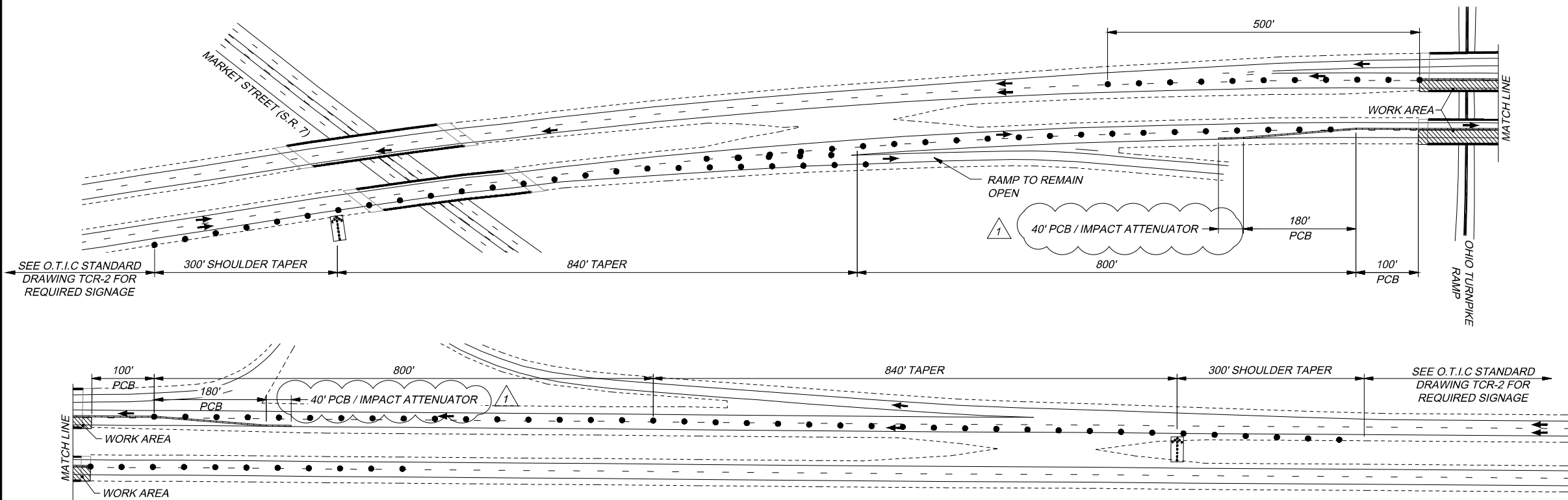
1. ALL TRAFFIC CONTROL DEVICES SHALL CONFORM TO THE CURRENT EDITION OF THE "OHIO MANUAL OF UNIFORM TRAFFIC CONTROL DEVICES"
2. THE CONTRACTOR SHALL FURNISH, ERECT, MAINTAIN AND SUBSEQUENTLY REMOVE ALL BARRICADES, SIGNS, SIGN SUPPORTS AND INCIDENTALS AS SHOWN ON THIS SHEET.
3. PAYMENT FOR ALL LABOR, EQUIPMENT AND MATERIALS SHALL BE CONSIDERED INCIDENTAL TO SP 614 MAINTAINING TRAFFIC UNLESS ITEMIZED SEPARATELY.
4. ALL SIGNAGE PER OTIC STANDARD DRAWING TCR-2.
5. SINGLE LANE CLOSURE WITH PORTABLE BARRIER SHALL BE IMPLEMENTED AS SHOWN ABOVE AND ON STANDARD DRAWING TCR-2.1.

LEGEND

- ARROW BOARD, TYPE C
- DRUMS
- WORK AREA
- TRAFFIC FLOW

		DESIGN AGENCY K&S ASSOCIATES, INC. 1400 W. STATE ST. COLUMBUS, OH 43260 P 614 266 7700 F 614 266 7700
PROJECT 43-17-06 MAINTENANCE OF TRAFFIC - PHASE 1 OHIO TURNPIKE OVER OHIO TURNPIKE RAMP MAHONING COUNTY	BY DATE MTG 2/23/17	REVISIONS ADDENDUM 2
M.P. 232.9	NO. 1	CHECKED MEM IN CHARGE M/JM
DATE: 1/5/17	DESIGNED MTG	DRAWN MTG
	OHIO TURNPIKE AND INFRASTRUCTURE COMMISSION	

232.9 - MD002.dwg: 2/23/17 - 11:26am



NOTES

1. ALL TRAFFIC CONTROL DEVICES SHALL CONFORM TO THE CURRENT EDITION OF THE "OHIO MANUAL OF UNIFORM TRAFFIC CONTROL DEVICES"
2. THE CONTRACTOR SHALL FURNISH, ERECT, MAINTAIN AND SUBSEQUENTLY REMOVE ALL BARRICADES, SIGNS, SIGN SUPPORTS AND INCIDENTALS AS SHOWN ON THIS SHEET.
3. PAYMENT FOR ALL LABOR, EQUIPMENT AND MATERIALS SHALL BE CONSIDERED INCIDENTAL TO SP 614 MAINTAINING TRAFFIC UNLESS ITEMIZED SEPARATELY.
4. ALL SIGNAGE PER OTIC STANDARD DRAWING TCR-2.
5. SINGLE LANE CLOSURE WITH PORTABLE BARRIER SHALL BE IMPLEMENTED AS SHOWN ABOVE AND ON STANDARD DRAWING TCR-2.1.

LEGEND

- ARROW BOARD, TYPE C
- DRUMS
- WORK AREA
- TRAFFIC FLOW

PROJECT 43-17-06	DATE: 1/5/17	M.P. 232.9	MAINTENANCE OF TRAFFIC - PHASE 2 OHIO TURNPIKE OVER OHIO TURNPIKE RAMP MAHONING COUNTY
DESIGNED: MTG DRAWN: MTG		CHECKED: MEM IN CHARGE: MJM	
NO. 1		REVISIONS ADDENDUM 2	
BY DATE MTG 2/23/17		DESIGN AGENCY KS ASSOCIATES, INC. 14000 W. STATE ST., SUITE 100 DUBLIN, OH 43017 P 614 885 8700 F 614 885 8701	
 		OHIO TURNPIKE AND INFRASTRUCTURE COMMISSION	