

**OHIO TURNPIKE AND
INFRASTRUCTURE COMMISSION**

682 Prospect Street
Berea, Ohio 44017

**REQUEST FOR PROPOSALS
TO PERFORM PROFESSIONAL ENGINEERING AND
CONSTRUCTION ADMINISTRATION AND INSPECTION SERVICES**

PROJECT NO. 71-17-05

Deck Replacements and Widening for
Ohio Turnpike Bridges over Poland-Unity Road (County Route 175) at MP 237.8,
Ohio Turnpike Bridges over Columbiana-New Castle Road (County Route 62) at MP 238.1
in Lorain County

Letters of Interest to Submit a Proposal to be received no later than:
5:00 P.M. (Eastern), April 20, 2017

Issue Date to Selected Interested Firms: **May 4, 2017**

Inquiry End Date: **5:00 P.M. (Eastern), May 18, 2017**

Proposals from Selected Interested Firms to be received no later than:
5:00 P.M. (Eastern), May 26, 2017

ATTENTION OF RESPONDENTS IS DIRECTED TO:

ANSWERS TO QUESTIONS RECEIVED THROUGH 5:00 P.M. ON APRIL 18, 2017

ANSWERS TO QUESTIONS RECEIVED THROUGH 5:00 P.M. ON APRIL 18, 2017

Q#1 Can clarification please be provided on the proposed bridge widths for the structures at MP 237.8 and MP 238.1? The scope states the bridges are to be re-decked and widened. The existing toe-to-toe bridge width appears to be close to 38'-0" wide (41'-0" out/out). Based on current criteria, the proposed shoulders should be 10.0' RIGHT and 4.0' LEFT. For two lanes of traffic, that is a total bridge width of 41'-0" (1.5' barrier + 4.0' + 12.0' + 12.0' + 10.0' + 1.5' barrier). Therefore, the bridges would essentially be wide enough to meet criteria. Or is the bridge to be widened for a future 3rd lane? Also, can the existing bridge plans be provided to verify their existing width and lane configuration?

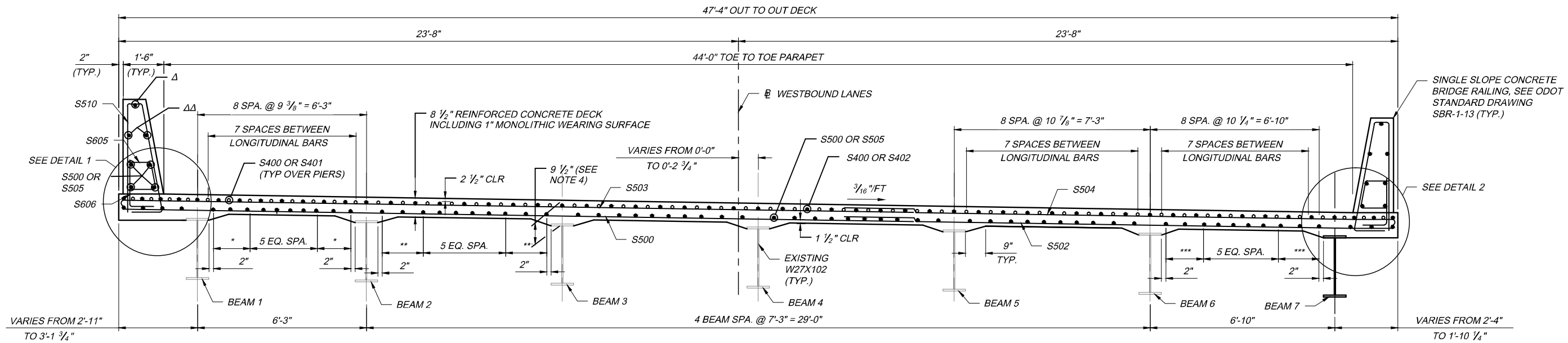
A#1 The widening is necessary to provide two 12' lanes and two 10' shoulders as depicted in the enclosed traverse section and typical section plan sheets from a separate project.

Q#2 How many lanes of Eastbound and Westbound mainline traffic must be maintained during the bridge rehabilitation project?

A#2 A minimum of one lane in each direction must be maintained at all times.

Q#3 Is a detour of local roads permitted during construction?

A#3 The Ohio Turnpike and Infrastructure Commission has no authority over local roads. The implementation of detours must be approved by the local governing agencies.



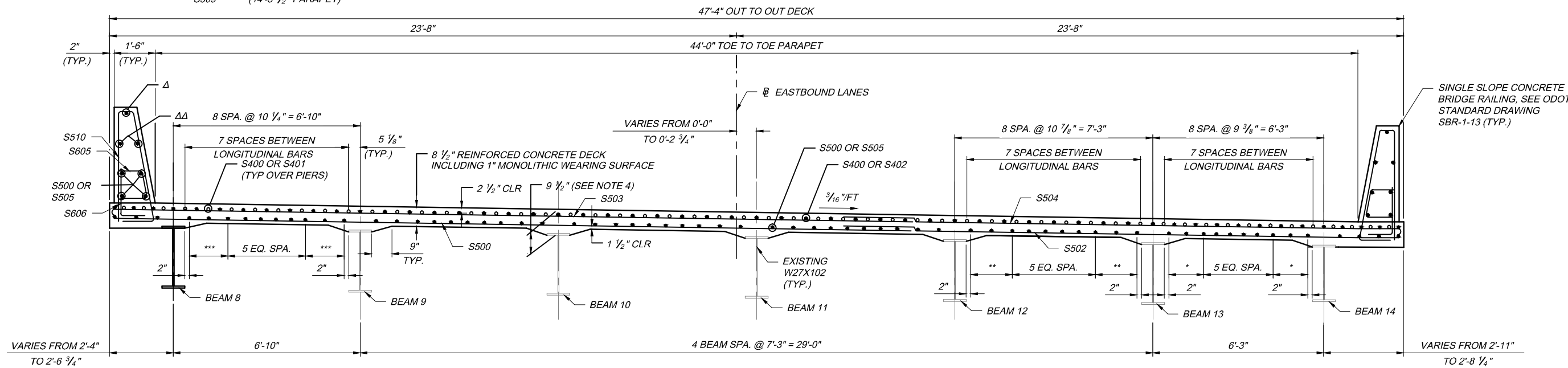
TRANSVERSE SECTION - WESTBOUND

(LOOKING UPSTATION)

- Δ - S601 (15'-0" PARAPET)
- S602 (7'-6" PARAPET)
- S603 (14'-9 7/8" PARAPET)
- S604 (14'-5 1/2" PARAPET)

- ΔΔ - S506 (15'-0" PARAPET)
- S507 (7'-6" PARAPET)
- S508 (14'-9 7/8" PARAPET)
- S509 (14'-5 1/2" PARAPET)

- * 2 SPA. @ 7 1/2" = 1'-3"
- ** 2 SPA. @ 9 1/8" = 1'-6 1/4"
- *** 2 SPA. @ 8 1/4" = 1'-4 1/2"

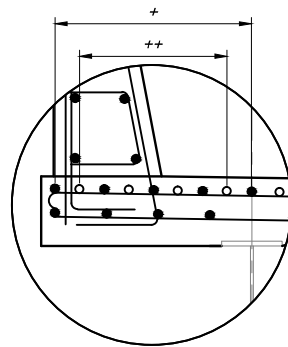


TRANSVERSE SECTION - EASTBOUND

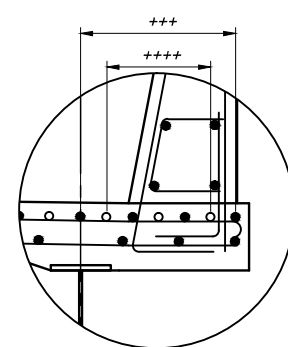
(LOOKING UPSTATION)

- + 4 SPA. @ 8 1/4" = 2'-8 3/4"
- ++ 3 SPA. @ 8 1/4" = 2'-0 1/2"
- +++ 3 SPA. @ 8 3/4" = 2'-1 3/4"
- ++++ 2 SPA. @ 8 3/4" = 1'-5 1/2"

MINIMUM LAP SPLICES	
NO. 4 BAR	1'-11"
NO. 5 BAR	3'-2"



DETAIL 1



DETAIL 2

NOTES:

1. FOR ABUTMENT SLAB DETAILS, SEE SHEET 76 OF 99.
2. FOR DECK JOINT DETAILS, SEE OTIC STANDARD DRAWINGS DJ-1 AND DJ-2.
3. LONGITUDINAL AND TRANSVERSE CONSTRUCTION JOINTS SHALL BE TREATED IN ACCORDANCE WITH ITEM SP 516B - SEALING OF CONSTRUCTION JOINTS.
4. 9 1/2" DIMENSION INCLUDES A 1" THEORETICAL HAUNCH. THE DIMENSION MAY VARY, WITH A MINIMUM VALUE OF 8 1/2".

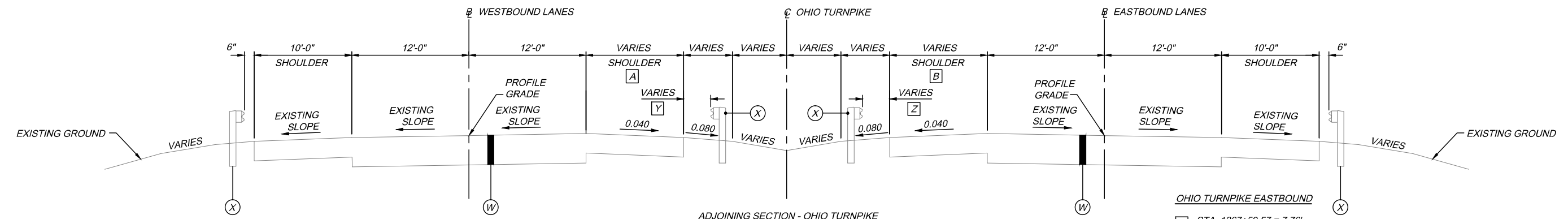
MP 240.8 TS001.dwg: 1/13/17 - 3:18pm

PROJECT 43-17-06 DATE: 1/5/17	DESIGN AGENCY ms consultants, inc. 2221 Schrock Road Columbus, Ohio 43229	DESIGN AGENCY ms consultants, inc. 2221 Schrock Road Columbus, Ohio 43229	DESIGN AGENCY ms consultants, inc. 2221 Schrock Road Columbus, Ohio 43229	DESIGN AGENCY ms consultants, inc. 2221 Schrock Road Columbus, Ohio 43229
TRANSVERSE SECTION OHIO TURNPIKE OVER GARFIELD ROAD MAHONING COUNTY	TRANSVERSE SECTION OHIO TURNPIKE OVER GARFIELD ROAD MAHONING COUNTY	TRANSVERSE SECTION OHIO TURNPIKE OVER GARFIELD ROAD MAHONING COUNTY	TRANSVERSE SECTION OHIO TURNPIKE OVER GARFIELD ROAD MAHONING COUNTY	TRANSVERSE SECTION OHIO TURNPIKE OVER GARFIELD ROAD MAHONING COUNTY
PROJECT 43-17-06 DATE: 1/5/17	DESIGN AGENCY ms consultants, inc. 2221 Schrock Road Columbus, Ohio 43229	DESIGN AGENCY ms consultants, inc. 2221 Schrock Road Columbus, Ohio 43229	DESIGN AGENCY ms consultants, inc. 2221 Schrock Road Columbus, Ohio 43229	DESIGN AGENCY ms consultants, inc. 2221 Schrock Road Columbus, Ohio 43229
28 / 32	87 99	87 99	87 99	87 99

OHIO TURNPIKE AND INFRASTRUCTURE COMMISSION

OHIO TURNPIKE

08314GY001.dwg: 1/13/17 - 2:05pm



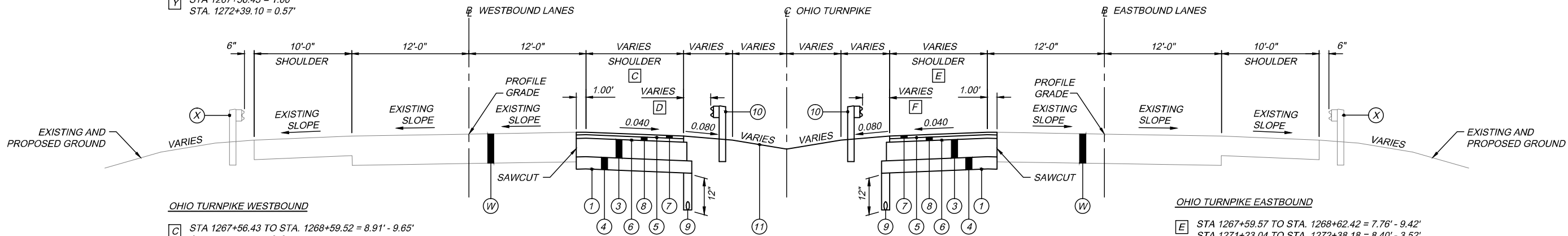
OHIO TURNPIKE WESTBOUND

- A** STA 1267+56.43 = 8.91'
STA. 1272+39.10 = 3.92'
- Y** STA 1267+56.43 = 1.00'
STA. 1272+39.10 = 0.57'

ADJOINING SECTION - OHIO TURNPIKE SECTION APPLIES:
 OHIO TURNPIKE WESTBOUND - STA. 1267+56.43 AND STA. 1272+39.10
 OHIO TURNPIKE EASTBOUND - STA. 1267+59.57 AND STA. 1272+38.18

OHIO TURNPIKE EASTBOUND

- B** STA. 1267+59.57 = 7.76'
STA. 1272+38.18 = 3.52'
- Z** STA. 1267+59.57 = 0.35'
STA. 1272+38.18 = 1.77'



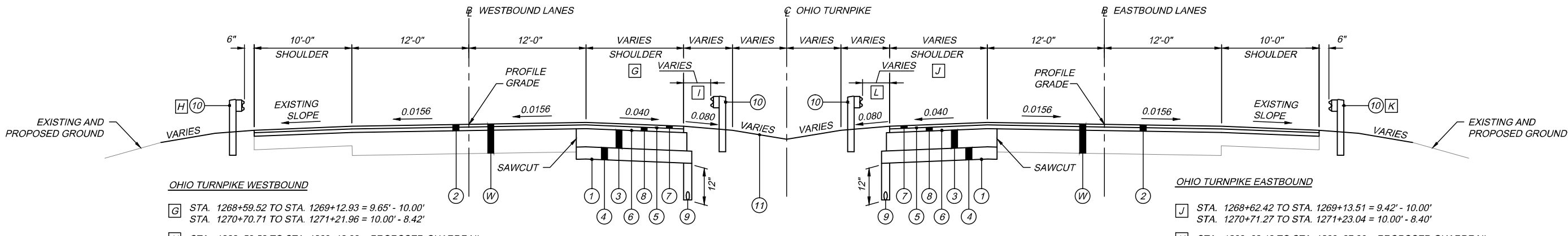
OHIO TURNPIKE WESTBOUND

- C** STA 1267+56.43 TO STA. 1268+59.52 = 8.91' - 9.65'
STA 1271+21.96 TO STA. 1272+39.10 = 8.42' - 3.92'
- D** STA. 1267+56.43 TO STA. 1268+59.52 = 1.00'
STA. 1271+21.96 TO STA. 1271+22.38 = 0.98' - 1.00'
STA. 1271+22.38 TO STA. 1272+14.09 = 1.00'
STA. 1272+14.09 TO STA. 1272+39.10 = 1.00' - 0.57'

ADJOINING SECTION - OHIO TURNPIKE SECTION APPLIES:
 OHIO TURNPIKE WESTBOUND - STA. 1267+56.43 TO STA. 1268+59.52 = 103.09 LIN. FT.
 STA. 1271+21.96 TO STA. 1272+39.10 = 117.14 LIN. FT.
 OHIO TURNPIKE EASTBOUND - STA. 1267+59.57 TO STA. 1268+62.42 = 102.85 LIN. FT.
 STA. 1271+23.04 TO STA. 1272+38.18 = 115.14 LIN. FT.

OHIO TURNPIKE EASTBOUND

- E** STA 1267+59.57 TO STA. 1268+62.42 = 7.76' - 9.42'
STA 1271+23.04 TO STA. 1272+38.18 = 8.40' - 3.52'
- F** STA 1267+59.57 TO STA. 1267+84.46 = 0.35' - 1.00'
STA 1267+84.46 TO STA. 1268+61.77 = 1.00'
STA. 1271+23.04 TO STA. 1272+13.25 = 1.00'
STA. 1272+13.25 TO STA. 1272+38.18 = 1.00' - 1.77'



OHIO TURNPIKE WESTBOUND

- G** STA. 1268+59.52 TO STA. 1269+12.93 = 9.65' - 10.00'
STA. 1270+70.71 TO STA. 1271+21.96 = 10.00' - 8.42'
- H** STA. 1268+59.52 TO STA. 1269+12.93 = PROPOSED GUARDRAIL
STA. 1270+93.84 TO STA. 1271+21.96 = PROPOSED GUARDRAIL
- I** STA 1268+59.52 TO STA. 1268+63.60 = 1.00'
STA. 1268+63.60 TO STA. 1268+88.70 = 1.00' - 0.00'
STA. 1268+88.70 TO STA. 1269+13.80 = 0.00'
STA. 1270+72.19 TO STA. 1270+97.29 = 0.00'
STA. 1270+97.29 TO STA. 1271+21.96 = 0.00' - 0.98'

ADJOINING SECTION - OHIO TURNPIKE SECTION APPLIES:
 OHIO TURNPIKE WESTBOUND - STA. 1268+59.52 TO STA. 1269+12.93 = 53.41 LIN. FT
 STA. 1270+70.71 TO STA. 1271+21.96 = 51.25 LIN. FT..
 OHIO TURNPIKE EASTBOUND - STA. 1268+62.42 TO STA. 1269+13.51 = 51.09 LIN. FT.
 STA. 1270+71.27 TO STA. 1271+23.04 = 51.77 LIN. FT.

OHIO TURNPIKE EASTBOUND

- J** STA. 1268+62.42 TO STA. 1269+13.51 = 9.42' - 10.00'
STA. 1270+71.27 TO STA. 1271+23.04 = 10.00' - 8.40'
- K** STA. 1268+62.42 TO STA. 1268+87.30 = PROPOSED GUARDRAIL
STA. 1270+70.48 TO STA. 1271+23.04 = PROPOSED GUARDRAIL
- L** STA 1268+62.42 TO STA. 1268+65.09 = 1.00'
STA 1268+65.09 TO STA. 1268+89.99 = 1.00' - 0.00'
STA. 1268+89.99 TO STA. 1269+14.90 = 0.00'
STA. 1270+72.05 TO STA. 1270+96.95 = 0.00'
STA. 1270+96.95 TO STA. 1271+21.85 = 0.00' - 1.00'
STA. 1271+21.85 TO STA. 1271+23.04 = 1.00'

LEGEND
PROPOSED

- 1** ITEM 204 - SUBGRADE COMPACTION
- 2** ITEM 254 - PAVEMENT PLANING, ASPHALT CONCRETE
- 3** ITEM 302 - 6" ASPHALT CONCRETE BASE, PG64-22
- 4** SP 304 - 6" AGGREGATE BASE

- 5** ITEM 407 - NON-TRACKING TACK COAT, (0.04 GAL/SY)
- 6** ITEM 407 - NON-TRACKING TACK COAT, (0.075 GAL/SY)
- 7** ITEM 441 - 1.25" ASPHALT CONCRETE SURFACE COURSE, TYPE 1, (448), PG64-22
- 8** ITEM 441 - 1.75" ASPHALT CONCRETE INTERMEDIATE COURSE, TYPE 2 (448)

EXISTING

- 9** ITEM 605 - 4" BASE PIPE UNDERDRAINS
- 10** ITEM 606 - GUARDRAIL, TYPE MGS
- 11** ITEM 659 - SEEDING AND MULCHING, CLASS 1
- W** ASPHALT CONCRETE (VARIABLE THICKNESS)
- X** EXISTING GUARDRAIL

OHIO TURNPIKE AND INFRASTRUCTURE COMMISSION

DESIGN AGENCY: **ms consulting, inc.**
2221 Schrock Road
Columbus, Ohio 43229

DESIGNED	CHECKED	NO.	REVISIONS	BY	DATE
DWH	DWH				
JAP	HRB				

TYPICAL SECTIONS
 STA. 1267+56.43 TO STA. 1272+39.10 (WESTBOUND)
 STA. 1267+59.57 TO STA. 1272+38.18 (EASTBOUND)

PROJECT 43-17-06
DATE: 1/5/17

53
99