

OHIO TURNPIKE AND
INFRASTRUCTURE COMMISSION

ADDENDUM NO. 1

CONTRACT NO. 70-14-01

EMBANKMENT AND BRIDGE REHABILITATION PROJECT
SHANNON ROAD APPROACHES M.P. 93.0
WERTH ROAD BRIDGE AND APPROACHES M.P. 93.5,
TOWNSHIP LINE ROAD APPROACHES M.P. 94.1,
SANDUSKY COUNTY, OHIO

OPENING DATE: *EXTENDED TO 2:00 P.M. (E.S.T.), FEBRUARY 24 24, 2014*

ATTENTION OF BIDDERS IS DIRECTED TO:

ANSWERS TO QUESTIONS RECEIVED THROUGH 5:00 P.M., FEBRUARY 13, 2014

MODIFICATIONS TO THE CONTRACT DOCUMENTS
COVER SHEET AND NOTICE TO BIDDERS PAGE OTC-NB-1

MODIFICATIONS TO THE BID FORM
Page OTC BF-3

MODIFICATIONS TO THE DRAWINGS/PLANS
Plan Sheet 3 of 66, Plan Sheet 7 of 66, Plan Sheet 9 of 66, Plan Sheet 11 of 66, Plan Sheet 13
of 66, Plan Sheet 23 of 66, Plan Sheet 25 of 66, Plan Sheet 27 of 66, Plan Sheet 29 of 66, Plan
Sheet 39 of 66, Plan Sheet 41 of 66, Plan Sheet 43 of 66, Plan Sheet 45 of 66

Issued by the Ohio Turnpike Commission on February 14, 2014. Issuance authorized by Robin Carlin, Deputy Executive Director, and Tommie Jo Marsillio, Director of Contracts Administration.


Robin Carlin Date 2/14/14


Tommie Jo Marsillio Date 2/14/14

**OHIO TURNPIKE AND INFRASTRUCTURE COMMISSION
ADDENDUM NO. 1
CONTRACT NO. 70-14-01**

ANSWERS TO QUESTIONS RECEIVED THROUGH 5:00 P.M., FEBRUARY 13, 2014

Q#1 Will the OTC please provide an excel spreadsheet for the bid items as you have in past proposals?

A#1 The Bid Form is posted on the Commission's website, www.ohioturnpike.org, under the drop down menu entitled "Business – Construction Projects". Please be advised per Article IB-2.6.2.3, that the Spreadsheet is provided as an electronic aide only, and the Bidder is responsible for the accuracy of its Bid. Also, please be advised that the Bid Form has been revised with this Addendum No. 1.

Q#2 Can the contractor use the OTC access drives at Shannon Road to access the site to and from the turnpike?

A#2 Yes the Contractor may use the access drives at Shannon Road per the requirements of SP 614.

Q#3 Will OTC allow the contractor to spoil waste dirt at the Shannon Road maintenance yards?

A#3 No, the Contractor may not spoil waste dirt at the Shannon Road maintenance yards.

Q#4 Sheet 62/66 and 64/66 tell you to reference OTIC Standard Drawings DJ-1, DJ-2, and DJ-5 for the expansion joint details. Sheets DJ-1, DJ-2, & DJ-3 are included in the plan set, however DJ-5 wasn't included. Please provide us with this sheet.

A#4 OTIC Standard Drawing DJ-5 is included as part of this addendum.

MODIFICATIONS VIA ADDENDUM NO. 1 TO THE CONTRACT DOCUMENTS FOR CONTRACT NO. 70-14-01

The following changes were made to the Contract Documents for Contract No. 70-14-01:

MODIFICATIONS TO THE COVER SHEET AND NOTICE TO BIDDERS

Deletions are shown with ~~strikethrough~~ text.

Changes/Additions are shown with ***bold italicized*** text.

Cover Sheet and Notice to Bidders Page OTC-NB-2: The Bid Opening date has been extended from 2:00 P.M. (E.S.T) February 24, 2014 to 2:00 P.M. (E.S.T) February 24, 2014.

MODIFICATIONS TO THE BID FORM

Deletions in Plan Notes are shown with ~~strikethrough~~ text.

Changes/Additions in the Plan Notes are shown with ***bold italicized*** text.

Page OTC BF-3

Ref. Nos. 33, 37 and 38 were modified as follows:

33	301	ASPHALT CONCRETE BASE, PG 64-22	693 <i>506</i>	CY
37	448	ASPHALT CONCRETE SURFACE COURSE, TYPE 1, PG 64-22	152 <i>232</i>	CY
38	448	ASPHALT CONCRETE INTERMEDIATE COURSE, TYPE 2, PG 64-22	214 <i>324</i>	CY

MODIFICATIONS TO THE PLAN DRAWINGS

Modifications to the Plan Drawings

Deletions in Plan Notes are shown with ~~strikethrough~~ text.

Changes/Additions in the Plan Notes are shown with ***bold italicized*** text.

Additions and deletions on Plan Drawings are indicated with a cloud and revision triangle thus:



The following changes have been made to change the material composition of the shoulders from Item 301 – Asphalt Concrete Base, PG 64-22 to Item 448 – Asphalt Concrete Intermediate Course, Type 2, PG 54-22 and Item 448 – Asphalt Concrete Surface Course, Type 1, PG 64-22 on Plan Sheets 7, 9, 23, 25, 39, and 41 of 66; to the sub-summary tables on Plan Sheets 11, 13, 27, 29, 43, and 45 of 66; and to the General Summary table on Plan Sheet 3 of 66.

Plan Sheet 3 of 66: In the General Summary under “PAVEMENT”, revised the Item 301 – ASPHALT CONCRETE BASE, PG 64-22 amounts under SHANNON ROAD from ~~404~~ to ***76*** CY (Plan Sheet 11), ~~424~~ to ***89*** CY (Plan Sheet 13), and SUBTOTAL from ~~225~~ to ***165*** CY; under WERTH ROAD from ~~404~~ to ***74*** CY (Plan Sheet 27), ~~448~~ to ***86*** CY (Plan Sheet 29), and SUBTOTAL from ~~249~~ to ***160*** CY; under TOWNSHIP LINE ROAD from ~~433~~ to ***97*** CY (Plan Sheet 43), ~~446~~ to ***84*** CY (Plan Sheet 45), and SUBTOTAL from ~~249~~ to ***181*** CY; and GRAND TOTAL from ~~693~~ to ***506*** CY. Also, under “PAVEMENT”, revised the Item 448 – ASPHALT CONCRETE SURFACE COURSE, TYPE 1, PG 64-22 amounts under SHANNON ROAD from ~~23~~ to ***35*** CY (Plan Sheet 11), ~~27~~ to ***41*** CY (Plan Sheet 13), and SUBTOTAL from ~~50~~ to ***76*** CY; under WERTH ROAD from ~~22~~ to ***33*** CY (Plan Sheet 27), ~~26~~ to ***39*** CY (Plan Sheet 29), and SUBTOTAL from ~~48~~ to ***72*** CY; under TOWNSHIP LINE ROAD from ~~29~~ to ***45*** CY (Plan Sheet 43), ~~25~~ to ***39*** CY (Plan Sheet 45), and SUBTOTAL from ~~54~~ to ***84*** CY; and GRAND TOTAL from ~~152~~ to ***232*** CY. Also, under “PAVEMENT”, revised the ITEM 448 – ASPHALT CONCRETE

INTERMEDIATE COURSE, TYPE 2, PG 64-22 under SHANNON ROAD from 33 to 49 CY (Plan Sheet 11), 38 to 57 CY (Plan Sheet 13), and SUBTOTAL from 74 to 106 CY; under WERTH ROAD from 34 to 47 CY (Plan Sheet 27), 36 to 55 CY (Plan Sheet 29), and SUBTOTAL from 67 to 102 CY; under TOWNSHIP LINE ROAD from 44 to 62 CY (Plan Sheet 43), 35 to 54 CY (Plan Sheet 45), and SUBTOTAL from 76 to 116 CY; and GRAND TOTAL from 214 to 324 CY.

Plan Sheet 7 of 66: In the TYPICAL SECTION SHANNON ROAD, revised the composition of the shoulders from ~~ITEM 301 – ASPHALT CONCRETE BASE, PG 64-22~~ to **ITEM 448 – ASPHALT CONCRETE SURFACE COURSE, TYPE 1, PG 64-22** and **ITEM 448 – ASPHALT CONCRETE INTERMEDIATE COURSE, TYPE 2, PG 64-22**.

Plan Sheet 9 of 66: In the APPROACH SECTION SHANNON ROAD, revised the composition of the shoulders from ~~ITEM 301 – ASPHALT CONCRETE BASE, PG 64-22~~ to **ITEM 448 – ASPHALT CONCRETE SURFACE COURSE, TYPE 1, PG 64-22** and **ITEM 448 – ASPHALT CONCRETE INTERMEDIATE COURSE, TYPE 2, PG 64-22**.

Plan Sheet 11 of 66: In the Pavement Subsummary Table, revised the amounts for ITEM 301 – ASPHALT CONCRETE BASE, PG 64-22 from 99 to 72 CY (Reference No. P-1), 5 to 4 CY (P-2), and subtotal 104 to 76 CY; ITEM 448 – ASPHALT CONCRETE SURFACE COURSE, TYPE 1, PG 64-22 from 22 to 33 CY (P-1), 4 to 2 CY (P-2), and subtotal 23 to 35 CY; and ITEM 448 – ASPHALT CONCRETE INTERMEDIATE COURSE, TYPE 2, PG 64-22 from 34 to 46 CY (P-1), 2 to 3 CY (P-2), and subtotal from 33 to 49 CY.

Plan Sheet 13 of 66: In the Pavement Subsummary Table, revised the amounts for ITEM 301 – ASPHALT CONCRETE BASE, PG 64-22 from 5 to 4 CY (Reference No. P-3), 116 to 85 CY (P-4), and subtotal 121 to 89 CY; ITEM 448 – ASPHALT CONCRETE SURFACE COURSE, TYPE 1, PG 64-22 from 4 to 2 CY (P-3), 26 to 39 CY (P-4), and subtotal 27 to 41 CY; and ITEM 448 – ASPHALT CONCRETE INTERMEDIATE COURSE, TYPE 2, PG 64-22 from 2 to 3 CY (P-3), 36 to 54 CY (P-4), and subtotal from 38 to 57 CY.

Plan Sheet 23 of 66: In the TYPICAL SECTION WERTH ROAD, revised the composition of the shoulders from ~~ITEM 301 – ASPHALT CONCRETE BASE, PG 64-22~~ to **ITEM 448 – ASPHALT CONCRETE SURFACE COURSE, TYPE 1, PG 64-22** and **ITEM 448 – ASPHALT CONCRETE INTERMEDIATE COURSE, TYPE 2, PG 64-22**.

Plan Sheet 25 of 66: In the APPROACH SECTION WERTH ROAD, revised the composition of the shoulders from ~~ITEM 301 – ASPHALT CONCRETE BASE, PG 64-22~~ to **ITEM 448 – ASPHALT CONCRETE SURFACE COURSE, TYPE 1, PG 64-22** and **ITEM 448 – ASPHALT CONCRETE INTERMEDIATE COURSE, TYPE 2, PG 64-22**.

Plan Sheet 27 of 66: In the Pavement Subsummary Table, revised the amounts for ITEM 301 – ASPHALT CONCRETE BASE, PG 64-22 from 97 to 71 CY (Reference No. P-1), 4 to 3 CY (P-2), and subtotal 101 to 74 CY; ITEM 448 – ASPHALT CONCRETE SURFACE COURSE, TYPE 1, PG 64-22 from 24 to 32 CY (P-1), and subtotal 22 to 33 CY; and ITEM 448 – ASPHALT CONCRETE INTERMEDIATE COURSE, TYPE 2, PG 64-22 from 30 to 45 CY (P-1), 4 to 2 CY (P-2), and subtotal from 34 to 47 CY.

Plan Sheet 29 of 66: In the Pavement Subsummary Table, revised the amounts for ITEM 301 – ASPHALT CONCRETE BASE, PG 64-22 from 4 to **3** CY (Reference No. P-3), 114 to **83** CY (P-4), and subtotal 118 to **86** CY; ITEM 448 – ASPHALT CONCRETE SURFACE COURSE, TYPE 1, PG 64-22 from 25 to **38** CY (P-4), and subtotal 26 to **39** CY; and ITEM 448 – ASPHALT CONCRETE INTERMEDIATE COURSE, TYPE 2, PG 64-22 from 4 to **2** CY (P-3), 35 to **53** CY (P-4), and subtotal from 36 to **55** CY.

Plan Sheet 39 of 66: In the TYPICAL SECTION TOWNSHIP LINE ROAD, revised the composition of the shoulders from ~~ITEM 301 – ASPHALT CONCRETE BASE, PG 64-22~~ to **ITEM 448 – ASPHALT CONCRETE SURFACE COURSE, TYPE 1, PG 64-22** and **ITEM 448 – ASPHALT CONCRETE INTERMEDIATE COURSE, TYPE 2, PG 64-22.**

Plan Sheet 41 of 66: In the APPROACH SECTION TOWNSHIP LINE ROAD, revised the composition of the shoulders from ~~ITEM 301 – ASPHALT CONCRETE BASE, PG 64-22~~ to **ITEM 448 – ASPHALT CONCRETE SURFACE COURSE, TYPE 1, PG 64-22** and **ITEM 448 – ASPHALT CONCRETE INTERMEDIATE COURSE, TYPE 2, PG 64-22.**

Plan Sheet 43 of 66: In the Pavement Subsummary Table, revised the amounts for ITEM 301 – ASPHALT CONCRETE BASE, PG 64-22 from 128 to **94** CY (Reference No. P-1), 5 to **3** CY (P-2), and subtotal 133 to **97** CY; ITEM 448 – ASPHALT CONCRETE SURFACE COURSE, TYPE 1, PG 64-22 from 28 to **43** CY (P-1), 4 to **2** CY (P-2), and subtotal 29 to **45** CY; and ITEM 448 – ASPHALT CONCRETE INTERMEDIATE COURSE, TYPE 2, PG 64-22 from 40 to **60** CY (P-1), 4 to **2** CY (P-2), and subtotal from 44 to **62** CY.

Plan Sheet 45 of 66: In the Pavement Subsummary Table, revised the amounts for ITEM 301 – ASPHALT CONCRETE BASE, PG 64-22 from 5 to **3** CY (Reference No. P-3), 114 to **81** CY (P-4), and subtotal 116 to **84** CY; ITEM 448 – ASPHALT CONCRETE SURFACE COURSE, TYPE 1, PG 64-22 from 4 to **2** CY (P-3), 24 to **37** CY (P-4), and subtotal 25 to **39** CY; and ITEM 448 – ASPHALT CONCRETE INTERMEDIATE COURSE, TYPE 2, PG 64-22 from 4 to **2** CY (P-3), 34 to **52** CY (P-4), and subtotal from 35 to **54** CY.

ATTACHMENTS:

Form Contract: Cover Sheet and Notice to Bidders NB-2.

Bid Form: OTC-BF-3.

Contract Drawings: Sheet 3, 7, 9, 11, 13, 23, 25, 27, 29, 39, 41, 43, 45, OTIC Standard Drawing DJ-5.

(BIDDERS ARE ADVISED TO UTILIZE THE ATTACHED REPLACEMENT PAGES).

Addendum No. 1 to is hereby acknowledged:
Contract No. 70-14-01

(Firm Name)

(Signature)

(Printed Name)

Date: _____

**Ohio Turnpike and Infrastructure Commission
682 Prospect Street
Berea, Ohio 44017**

CONTRACT NO. 70-14-01

EMBANKMENT AND BRIDGE REHABILITATION PROJECT

**SHANNON ROAD APPROACHES M.P. 93.0,
WERTH ROAD BRIDGE AND APPROACHES M.P. 93.5,
TOWNSHIP LINE ROAD APPROACHES M.P. 94.1,
SANDUSKY COUNTY, OHIO**

OPENING DATE: 2:00 P.M. (E.S.T.), FEBRUARY ~~21~~ 24, 2014

Submitted By:

Company Name: _____

Contact Name: _____

Street Address: _____

City: _____

State: _____ Zip Code: _____

Telephone Number: _____

Fax Number: _____

Email: _____

Published and Copyrighted © 2014 by The Ohio Turnpike and Infrastructure Commission

If you have received these Contract Documents from any entity other than the Ohio Turnpike and Infrastructure Commission, you risk the receipt of inaccurate or incomplete information and/or Plans; and will not receive any addenda issued by the Commission. These documents are copyrighted by the Ohio Turnpike and Infrastructure Commission. Any unauthorized electronic reproduction of these documents for the purpose of resale or bidding subscription services is expressly prohibited.

OHIO TURNPIKE AND INFRASTRUCTURE COMMISSION

682 Prospect Street
Berea, Ohio 44017

NOTICE TO BIDDERS

Sealed Bids will be received by the Ohio Turnpike and Infrastructure Commission (“Commission”) at 682 Prospect Street, Berea, Ohio 44017 for the following Project:

CONTRACT NO. 70-14-01

**EMBANKMENT AND BRIDGE REHABILITATION PROJECT
SHANNON ROAD APPROACHES M.P. 93.0,
WERTH ROAD BRIDGE AND APPROACHES M.P. 93.5,
TOWNSHIP LINE ROAD APPROACHES M.P. 94.1,
SANDUSKY COUNTY, OHIO**

Bids are to be submitted in accordance with the Contract Documents prepared by the Commission.

Prevailing Wage Rates and Equal Employment Opportunity requirements are applicable to this Project.

All Bidders entering into a Contract on a Commission-administered Project and their Subcontractors will be required to be enrolled, and in good standing in a “Drug-Free Safety Program” approved by the Ohio Bureau of Workers’ Compensation.

Pollution Liability Insurance is required under GC Art. 12.1.4 for this Project. Builder’ Risk Insurance is not required under GC Art. 12.2 for this Project.

Bids will be received for:

Rehabilitation of multiple bridge approach roadway embankments; removal and replacement of approach pavement, storm sewer system and guardrail; replacement of bridge deck and miscellaneous patching of substructure at the Werth Road Bridge; maintenance of traffic; and all other items incidental to the completion of the Work. All Work is to be performed as per the Plans, Drawings, Specifications, Special Provisions, and other Contract Documents for Contract No. 70-14-01.

Bids will be accepted until **FEBRUARY 21 24, 2014, at 2:00 P.M (E.S.T.)**, when all Bids will be accessed, opened and read aloud. To avoid a potential extension of the Bid Opening date and/or a potential rejection of all Bids, it is imperative that Bidders submit all questions in a timely manner and no later than seven (7) days prior to Bid Opening.

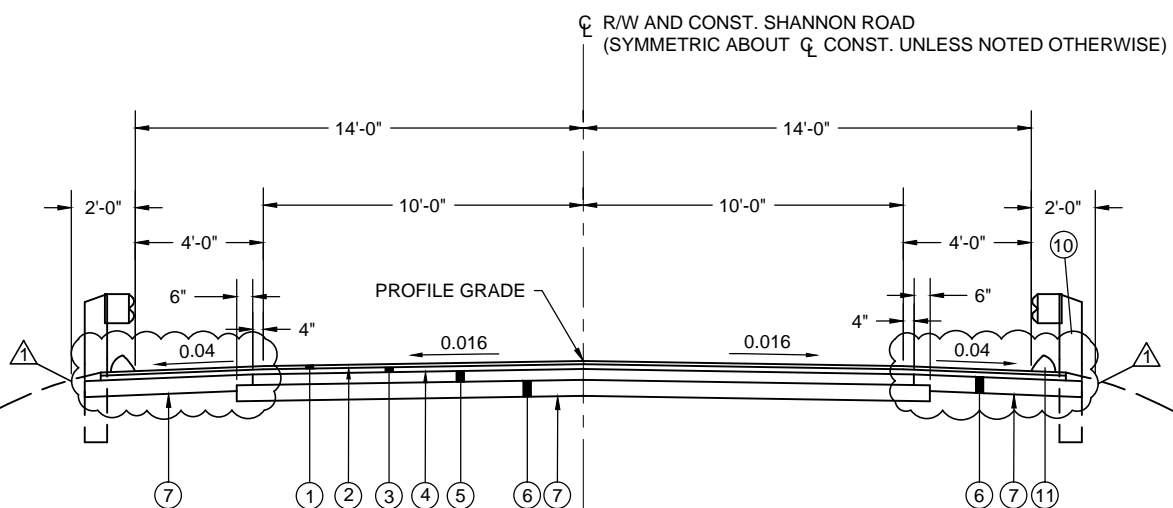
BID FORM CONTRACT NO. 70-14-01

Ref. No.	Item No.	Item Description	Approx. Quantity	Unit	Unit Cost	Extended Bid Amount
		PAVEMENT (Ref. Nos. 32 - 41)				
32	204	SUBGRADE COMPACTION	6621	SY		
33	301	ASPHALT CONCRETE BASE, PG 64-22	603 506	CY		
34	304	AGGREGATE BASE	5286	CY		
35	407	TACK COAT	496	GAL		
36	407	TACK COAT FOR INTERMEDIATE COURSE	496	GAL		
37	448	ASPHALT CONCRETE SURFACE COURSE, TYPE 1, PG 64-22	452 232	CY		
38	448	ASPHALT CONCRETE INTERMEDIATE COURSE, TYPE 2, PG 64-22	244 324	CY		
39	609	ASPHALT CONCRETE CURB, TYPE 1	3376	FT		
40	SPECIAL	AGGREGATE (No. 57 STONE), AS PER PLAN	1212	CY		
41	SPECIAL	FILTER FABRIC, AS PER PLAN	18150	SY		
TOTAL - PAVEMENT						

		TRAFFIC CONTROL (Ref. Nos. 42 - 43)				
42	642	EDGE LINE, TYPE 1	0.84	MILE		
43	642	CENTER LINE, TYPE 1	0.42	MILE		
TOTAL - TRAFFIC CONTROL						

		GENERAL (Ref. Nos. 44 - 47)				
44	SP614	MAINTAINING TRAFFIC	LUMP	LUMP		
45	623	CONSTRUCTION LAYOUT STAKES	LUMP	LUMP		
46	IB.ART.6	PREMIUM FOR CONTRACT PERFORMANCE BOND AND PAYMENT BOND	LUMP	LUMP		
47	624	MOBILIZATION	LUMP	LUMP		
TOTAL - GENERAL						

		BRIDGE (Ref. Nos. 48 - 67)				
48	SP 202	PORTIONS OF STRUCTURE REMOVED	LUMP	LUMP		
49	SP 509	EPOXY COATED REINFORCING STEEL	64,683	POUND		
50	509	REINFORCING STEEL, REPLACEMENT OF EXISTING REINFORCING STEEL	100	POUND		
51	510	DOWEL HOLES WITH NON-SHRINK, NON-METALLIC GROUT	52	EACH		
52	SP 511A	CLASS S CONCRETE, SUPERSTRUCTURE DECK SLAB, USING SHRINKAGE COMPENSATING CEMENT	172	CY		
53	SP 511A	CLASS S CONCRETE, BARRIERS AND PARAPETS, USING TYPE I CEMENT	65	CY		
54	SP 511A	CLASS S CONCRETE, ABUTMENT SLABS, USING SHRINKAGE COMPENSATING CEMENT	25	CY		



TYPICAL SECTION SHANNON ROAD

APPLIES: STA. 95+94.45 TO 98+77.28 = 282.83 LIN. FT
 APPLIES: STA. 101+22.99 TO 104+55.56 = 332.57 LIN. FT
 TOTAL = 615.40 LIN. FT

NOTE: GUARDRAIL SHALL BE REMOVED AND REBUILT (INCLUDING BRIDGE TERMINAL AND ANCHOR ASSEMBLIES) BETWEEN THE FOLLOWING LIMITS:

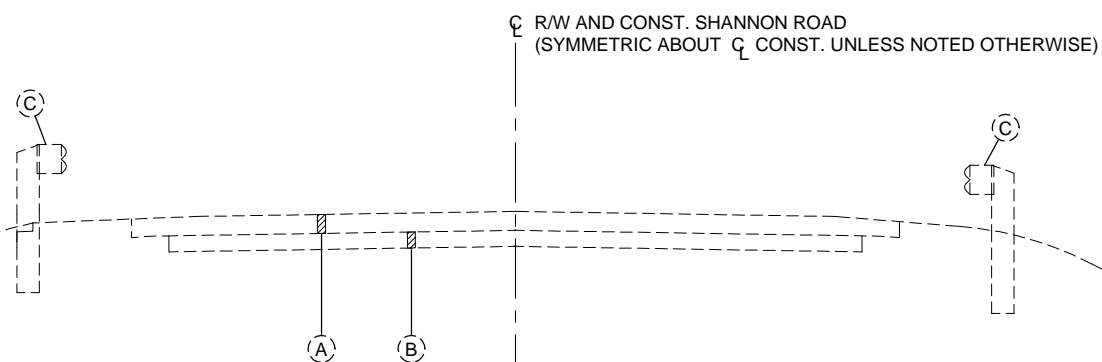
STA. 95+58.11 LT. TO 98+94.95 LT.
 STA. 95+44.54 RT. TO 98+90.27 RT.
 STA. 101+10.10 LT. TO 105+18.27 LT.
 STA. 101+05.15 RT. TO 104+98.08 RT.

NOTE: ITEM 609 - ASPHALT CONCRETE CURB, TYPE 1, SHALL BE PLACED BETWEEN THE FOLLOWING LIMITS:

STA. 96+25.00 RT. TO STA. 98+89.37 RT.
 STA. 96+25.00 LT. TO STA. 98+95.85 LT.
 STA. 101+04.18 RT. TO STA. 104+55.00 RT.
 STA. 101+11.03 LT. TO STA. 104+55.00 LT.

LEGEND

- | | | |
|------|--------------|--|
| (1) | ITEM 448 | 1 1/4" ASPHALT CONCRETE SURFACE COURSE, TYPE 1, PG 64-22 |
| (2) | ITEM 407 | TACK COAT FOR INTERMEDIATE COURSE |
| (3) | ITEM 448 | 1 3/4" ASPHALT CONCRETE INTERMEDIATE COURSE, TYPE 2, PG 64-22 |
| (4) | ITEM 407 | TACK COAT |
| (5) | ITEM 301 | 4" ASPHALT CONCRETE BASE, PG 64-22 |
| (6) | ITEM 304 | 6" AGGREGATE BASE |
| (7) | ITEM 204 | SUBGRADE COMPACTION |
| (8) | ITEM 659 | SEEDING AND MULCHING |
| (9) | ITEM 301 | 3" ASPHALT CONCRETE BASE, PG 64-22 |
| (10) | ITEM 606 | GUARDRAIL, TYPE MGS 5 |
| (11) | ITEM 609 | ASPHALT CONCRETE CURB, TYPE 1 |
| (12) | | PROPOSED SHANNON ROAD - SEE TYPICAL SECTION THIS SHEET |
| (13) | ITEM 304 | AGGREGATE BASE |
| (14) | ITEM SPECIAL | AGGREGATE (NO. 57 STONE), AS PER PLAN |
| (15) | ITEM SPECIAL | FILTER FABRIC, AS PER PLAN |
| (16) | ITEM 605 | 4" SHALLOW PIPE UNDERDRAINS 707.31, AS PER PLAN |
| (17) | ITEM 209 | DITCH CLEANOUT |
| (A) | | EXISTING ASPHALT PAVEMENT 8" AVERAGE DEPTH (ACTUAL THICKNESS MAY VARY) |
| (B) | | EXISTING AGGREGATE BASE 11" AVERAGE DEPTH (ACTUAL THICKNESS MAY VARY) |
| (C) | | EXISTING GUARDRAIL |



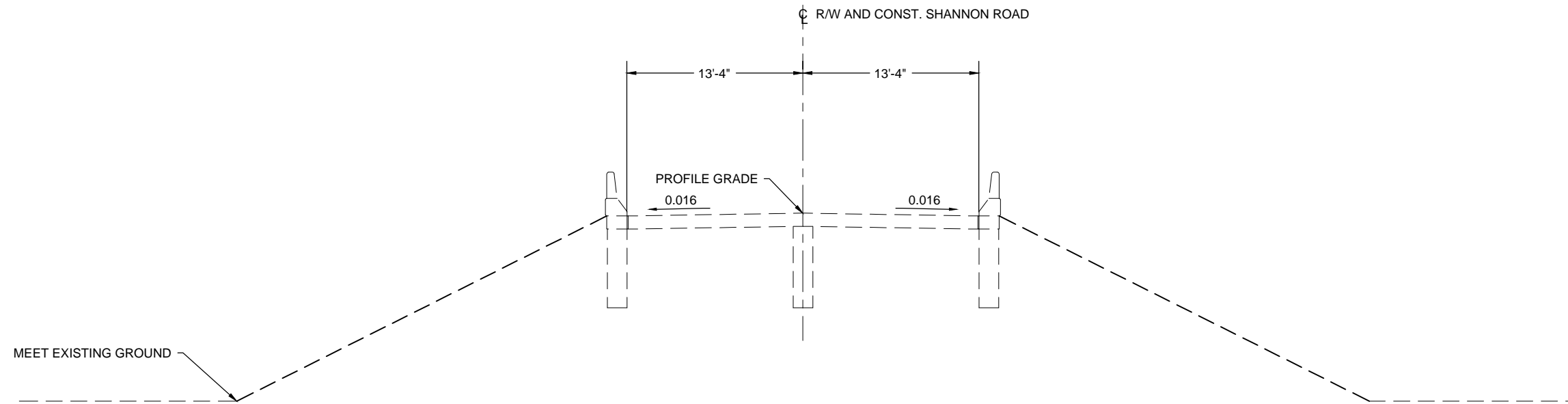
TYPICAL SECTION - EXISTING SHANNON ROAD

0 3 6
 SCALE IN FEET

APPLIES: STA. 95+94.45 TO 98+77.28
 APPLIES: STA. 101+22.99 TO 104+55.56

1	ADDENDUM NO. 1		MS	2-3-14
NO.	REVISIONS		BY	DATE
OHIO TURNPIKE AND INFRASTRUCTURE COMMISSION				
TYPICAL SECTIONS SHANNON ROAD				
M.P. 93.0		SANDUSKY COUNTY		
DESIGNED:	MRM	CHECKED:	BKS	DATE: 12-31-2013
DRAWN:	PRR	IN CHARGE:	BKS	SCALE: AS SHOWN
CONTRACT 70-14-01				SHEET 7 OF 66

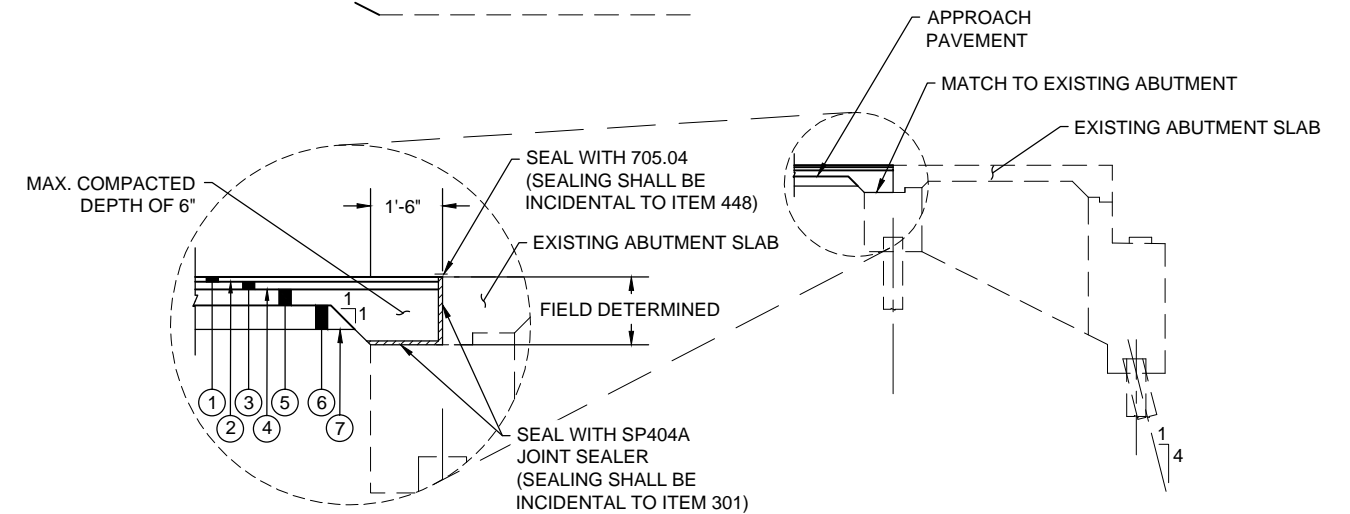
S&ME Filename: I:\BPP\Drawings\Plan\93014\AS Shannon Road 05021 - Typical Sections.dwg Layout: Typical Section (1)



ABUTMENT SLAB SECTION SHANNON ROAD



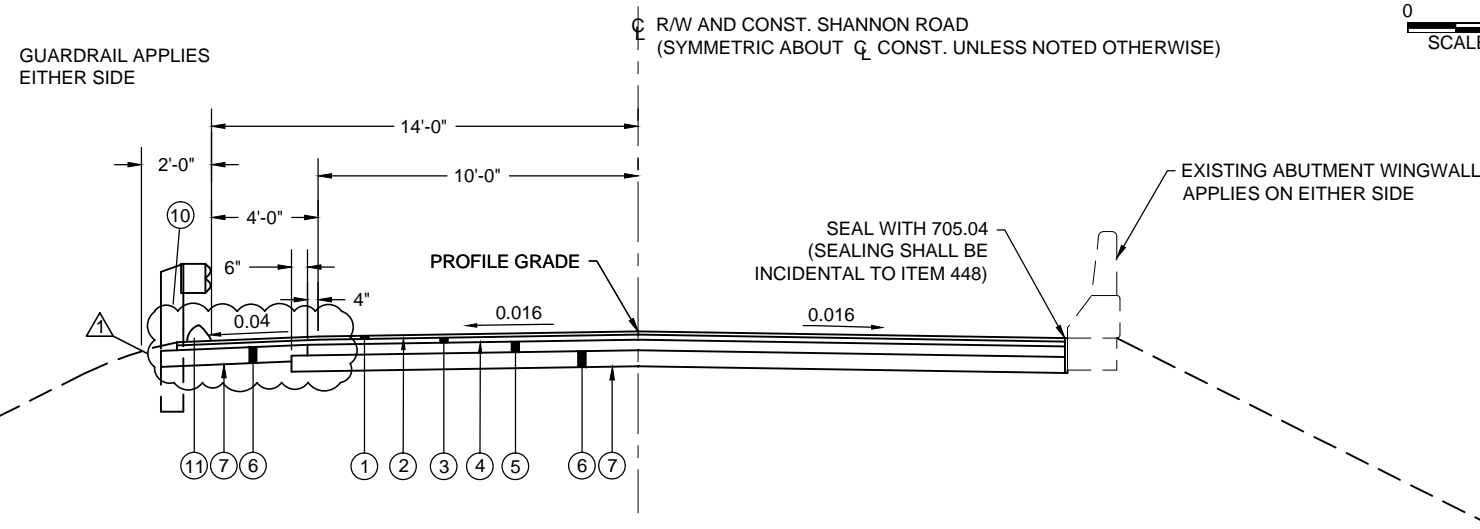
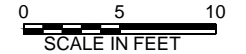
APPLIES: STA. 98+92.61 TO 101+07.62 = 215.01 LIN. FT
 DEDUCT FOR STRUCTURE: STA. 99+06.83 TO 100+93.47 = 186.64 LIN. FT
 TOTAL = 28.37 LIN. FT



DETAIL - APPROACH PAVEMENT AT EXISTING ABUTMENT



EXISTING ABUTMENT SHANNON ROAD



APPROACH SECTION SHANNON ROAD



APPLIES: STA. 98+77.28 TO 98+92.61 = 15.33 LIN. FT
 APPLIES: STA. 101+07.62 TO 101+22.99 = 15.37 LIN. FT
 TOTAL = 30.70 LIN FT

NOTE: DO NOT DISTURB EXISTING WINGWALL.
 FIELD FIT APPROACH PAVEMENT AROUND EXISTING WINGWALL.

FOR LEGEND, SEE SHEET 7 OF 66

1	ADDENDUM NO. 1	MS	2-3-14
NO.	REVISIONS	BY	DATE
OHIO TURNPIKE AND INFRASTRUCTURE COMMISSION			
TYPICAL SECTIONS SHANNON ROAD			
M.P. 93.0	SANDUSKY COUNTY		
DESIGNED: MRM	CHECKED: BKS	DATE: 12-31-2013	
DRAWN: PRR	IN CHARGE: BKS	SCALE: AS SHOWN	
CONTRACT 70-14-01		SHEET 9 OF 66	

ROADWAY SUBSUMMARY

REF NO.	SHEET NO.	STATION		SIDE	202	202	202	202	202	209	606	606	606	606
					PIPE REMOVED, 24" AND UNDER	CATCH BASIN REMOVED	GUARDRAIL REMOVED	APPROACH SLAB REMOVED	CURB REMOVED	DITCH CLEANOUT	GUARDRAIL, TYPE MGS 5	ANCHOR ASSEMBLY, MGS TYPE A	MGS BRIDGE TERMINAL ASSEMBLY, TYPE 1	MGS BRIDGE TERMINAL ASSEMBLY, TYPE 2
					FT	EACH	FT	SY	FT	FT	FT	EACH	EACH	EACH
R-1	10	98+56.53	98+56.53	LT	37	1								
R-2	10	98+56.87	98+56.87	RT	31	1								
R-3	10	95+58.11	98+97.72	LT			340							
R-4	10	95+51.28	98+91.20	RT			340							
R-5	10	98+77.28	98+92.61	LT/RT				48						
R-6	10	98+49.91	98+95.84	LT					46					
R-7	10	98+49.87	98+89.37	RT					40					
R-15	10	96+23.09	99+29.00	LT						306				
R-16	10	95+42.55	98+86.40	RT						344				
GR-1	10	95+58.11	98+95.85	LT							288	1		1
GR-2	10	95+44.54	98+89.37	RT							295	1	1	
TOTALS CARRIED TO GENERAL SUMMARY					68	2	680	48	86	650	583	2	1	1

DRAINAGE SUBSUMMARY

REF NO.	SHEET NO.	STATION		SIDE	511	601	603	604	605	SPECIAL
					CLASS C CONCRETE, HEADWALL	ROCK CHANNEL PROTECTION, TYPE D WITH FILTER	12" CONDUIT, TYPE C, PER ODOT 707.33	CATCH BASIN, No. 3A	4" SHALLOW PIPE UNDERDRAINS 707.31, AS PER PLAN	PRECAST REINFORCED CONCRETE OUTLET
					CY	CY	FT	EACH	FT	EACH
D-1	10	96+30.00	96+30.00	LT	0.2	1.3	28	1		
D-2	10	96+30.00	96+30.00	RT	0.2	1.3	28	1		
UD-1	10	96+30.00	98+89.66	LT					288	1
UD-2	10	96+30.00	98+83.38	RT					281	1
TOTALS CARRIED TO GENERAL SUMMARY					0.4	2.6	56	2	569	2

PAVEMENT SUBSUMMARY

REF NO.	SHEET NO.	STATION		SIDE	204	301	304	407	407	448	448	609	SPECIAL	SPECIAL
					SUBGRADE COMPACTION	ASPHALT CONCRETE BASE, PG 64-22	AGGREGATE BASE	TACK COAT	TACK COAT FOR INTERMEDIATE COURSE	ASPHALT CONCRETE SURFACE COURSE, TYPE 1, PG 64-22	ASPHALT CONCRETE INTERMEDIATE COURSE, TYPE 2, PG 64-22	ASPHALT CONCRETE CURB, TYPE 1	AGGREGATE (No. 57 STONE), AS PER PLAN	FILTER FABRIC, AS PER PLAN
					SY	CY	CY	GAL	GAL	CY	CY	FT	CY	SY
P-1	10	95+94.45	98+77.28	LT/RT	943	72	613	71	71	33	46	513	172	1062
P-2	10	98+77.28	98+92.61	LT/RT	51	4	31	4	4	2	3	30	8	52
TOTALS CARRIED TO GENERAL SUMMARY					994	76	644	75	75	35	49	543	180	1114

NOTE: SEE NOTE ON SHEET 7 FOR ASPHALT CURB LIMITS
TACK COAT AND TACK COAT FOR INTERMEDIATE COURSE ARE TO BE APPLIED AT A RATE OF 0.075 GAL/SY.

TRAFFIC CONTROL SUBSUMMARY


REF NO.	SHEET NO.	STATION		SIDE	642	642
					EDGE LINE, TYPE 1	CENTER LINE, TYPE 1
					MILE	MILE
EL-1	10	95+94.45	98+94.95	LT	0.06	
CL-1	10	95+94.45	98+92.61	LT/RT		0.06
EL-2	10	95+94.45	98+90.27	RT	0.06	
TOTALS CARRIED TO GENERAL SUMMARY					0.12	0.06

EROSION CONTROL SUBSUMMARY

REF NO.	SHEET NO.	STATION		SIDE	659
					SEEDING AND MULCHING
					SY
EC-1	10	95+94.45	99+11.93	LT	757
EC-2	10	95+94.45	99+03.43	RT	726
TOTALS CARRIED TO GENERAL SUMMARY					1483

1	ADDENDUM NO. 1	MS	2-3-14
NO.	REVISIONS	BY	DATE

OHIO TURNPIKE AND INFRASTRUCTURE COMMISSION
SUBSUMMARY
 STA. 95+00.00 TO STA. 99+40.00
 SHANNON ROAD
 M.P. 93.0 SANDUSKY COUNTY



DESIGNED: MRM	CHECKED: BKS	DATE: 12-31-2013
DRAWN: PRR	IN CHARGE: BKS	SCALE: N.T.S.

CONTRACT 70-14-01 SHEET 11 OF 66

ROADWAY SUBSUMMARY

REF NO.	SHEET NO.	STATION		SIDE	202	202	202	202	202	209	606	606	606	606	606
					PIPE REMOVED	CATCH BASIN REMOVED	GUARDRAIL REMOVED	APPROACH SLAB REMOVED	CURB REMOVED	DITCH CLEANOUT	GUARDRAIL, TYPE MGS 5,	ANCHOR ASSEMBLY, MGS TYPE A	ANCHOR ASSEMBLY, MGS TYPE T	MGS BRIDGE TERMINAL ASSEMBLY, TYPE 1	MGS BRIDGE TERMINAL ASSEMBLY, TYPE 2
		FT	EACH		FT	SY	FT	FT	FT	EACH	EACH	EACH	EACH		
		FROM	TO												
R-8	12	101+43.75	101+43.75	LT	37	1									
R-9	12	101+44.18	101+44.18	RT	41	1									
R-10	12	101+09.15	105+18.27	LT			402								
R-11	12	101+02.39	104+98.08	RT			427								
R-12	12	101+07.62	101+22.99	LT/RT				48							
R-13	12	101+11.02	101+50.07	LT					39						
R-14	12	101+07.62	101+50.89	RT					43						
R-17	12	101+17.36	104+55.00	LT						338					
R-18	12	100+91.00	104+70.63	RT						380					
GR-3	12	101+09.15	105+11.45	LT							357	1		1	
GR-4	12	101+02.39	105+00.32	RT							388		1		1
TOTALS CARRIED TO GENERAL SUMMARY					78	2	829	48	82	718	745	1	1	1	1

DRAINAGE SUBSUMMARY

REF NO.	SHEET NO.	STATION		SIDE	511	601	611	611	605	SPECIAL
					CLASS C CONCRETE, HEADWALL	ROCK CHANNEL PROTECTION, TYPE D WITH FILTER	12" CONDUIT, TYPE C, PER ODOT 707.33	CATCH BASIN, No. 3A	4" SHALLOW PIPE UNDERDRAINS 707.31, AS PER PLAN	PRECAST REINFORCED CONCRETE OUTLET
		CY	CY		FT	EACH	FT	EACH		
		FROM	TO							
D-3	12	104+20.00	104+20.00	LT	0.2	1.3	23	1		
D-4	12	104+20.00	104+20.00	RT	0.2	1.3	27	1		
UD-3	12	101+16.77	104+20.00	LT					331	1
UD-4	12	101+10.12	104+20.00	RT					338	1
TOTALS CARRIED TO GENERAL SUMMARY					0.4	2.6	50	2	669	2

PAVEMENT SUBSUMMARY

REF NO.	SHEET NO.	STATION		SIDE	204	301	304	407	407	448	448	609	SPECIAL	SPECIAL	
					SUBGRADE COMPACTION	ASPHALT CONCRETE BASE, PG 64-22	AGGREGATE BASE	TACK COAT	TACK COAT FOR INTERMEDIATE COURSE	ASPHALT CONCRETE SURFACE COURSE, TYPE 1, PG 64-22	ASPHALT CONCRETE INTERMEDIATE COURSE, TYPE 2, PG 64-22	ASPHALT CONCRETE CURB, TYPE 1	AGGREGATE (No. 57 STONE), AS PER PLAN	FILTER FABRIC, AS PER PLAN	
		SY	CY		CY	GAL	GAL	CY	CY	FT	CY	SY			
		FROM	TO												
P-3	12	101+07.62	101+22.99	LT/RT	51	4	30	4	4	2	3	30	8	52	
P-4	12	101+22.99	104+55.56	LT/RT	1109	85	721	83	83	39	54	673	203	1248	
TOTALS CARRIED TO GENERAL SUMMARY					1160	89	751	87	87	41	57	703	211	1300	

NOTE: SEE NOTE ON SHEET 7 FOR ASPHALT CURB LIMITS
TACK COAT AND TACK COAT FOR INTERMEDIATE COURSE ARE TO BE APPLIED AT A RATE OF 0.075 GAL/SY.

TRAFFIC CONTROL SUBSUMMARY

REF NO.	SHEET NO.	STATION		SIDE	642	642
					EDGE LINE, TYPE 1	CENTER LINE, TYPE 1
		MILE	MILE			
		FROM	TO			
EL-3	12	101+10.10	104+55.56	LT	0.07	
CL-2	12	101+07.62	104+55.56	LT/RT		0.07
EL-4	12	101+05.15	104+55.56	RT	0.07	
TOTALS CARRIED TO GENERAL SUMMARY					0.14	0.07

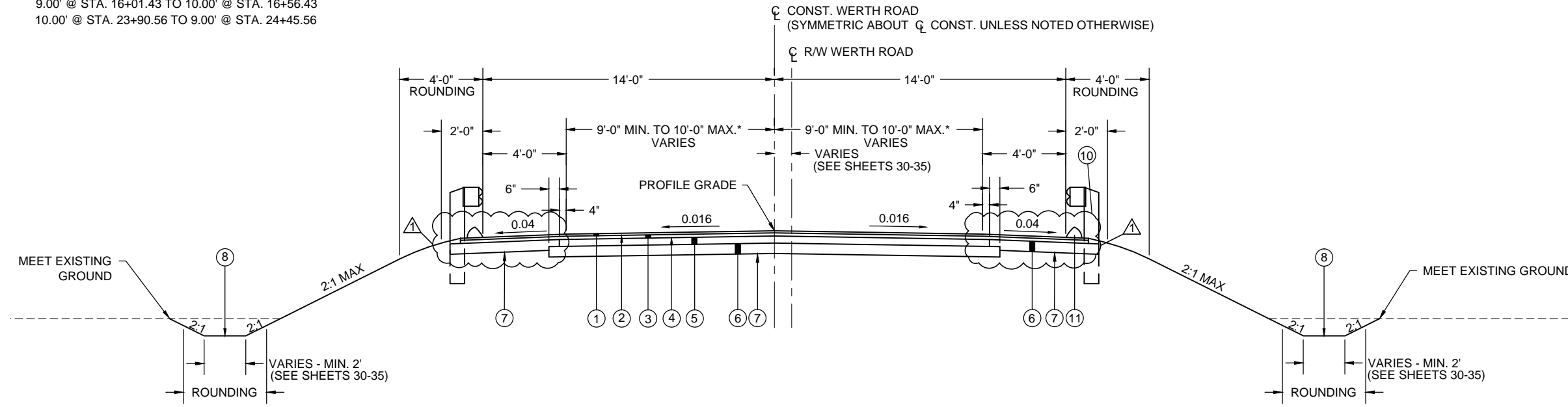
EROSION CONTROL SUBSUMMARY

REF NO.	SHEET NO.	STATION		SIDE	659
					SEEDING AND MULCHING
		SY			
		FROM	TO		
EC-3	12	100+96.72	104+55.56	LT	836
EC-4	12	100+88.56	104+55.56	RT	869
TOTALS CARRIED TO GENERAL SUMMARY					1705

1	ADDENDUM NO. 1	MS	2-3-14
NO.	REVISIONS	BY	DATE
OHIO TURNPIKE AND INFRASTRUCTURE COMMISSION			
SUBSUMMARY			
STA. 100+60.00 TO STA. 105+00.00			
SHANNON ROAD			
M.P. 93.0	SANDUSKY COUNTY		
DESIGNED: MRM	CHECKED: BKS	DATE: 12-31-2013	
DRAWN: PRR	IN CHARGE: BKS	SCALE: N.T.S.	
CONTRACT 70-14-01		SHEET 13 OF 66	

*VARIABLE LANE WIDTH (BOTH SIDES)

9.00' @ STA. 16+01.43 TO 10.00' @ STA. 16+56.43
 10.00' @ STA. 23+90.56 TO 9.00' @ STA. 24+45.56



TYPICAL SECTION WERTH ROAD

APPLIES: STA. 16+01.43 TO 18+80.28 = 278.85 LIN. FT
 APPLIES: STA. 21+20.89 TO 24+45.56 = 324.67 LIN. FT
 TOTAL = 603.52 LIN. FT

NOTE: GUARDRAIL SHALL BE REMOVED AND REBUILT
 (INCLUDING BRIDGE TERMINAL AND ANCHOR ASSEMBLIES)
 BETWEEN THE FOLLOWING LIMITS:

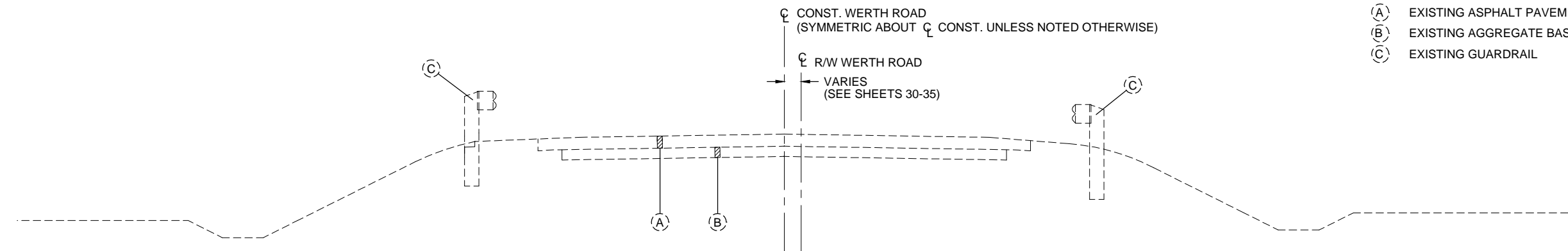
STA. 15+07.88 LT. TO 18+94.25 LT.
 STA. 15+20.64 RT. TO 18+87.69 RT.
 STA. 21+13.59 LT. TO 25+37.11 LT.
 STA. 21+07.79 RT. TO 25+28.51 RT.

NOTE: ITEM 609 - ASPHALT CONCRETE CURB, TYPE 1,
 SHALL BE PLACED BETWEEN THE FOLLOWING LIMITS:

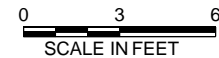
STA. 16+50.00 TO STA. 18+94.96 LT
 STA. 16+50.00 TO STA. 18+88.52 RT
 STA. 21+11.48 TO STA. 24+00.00 LT
 STA. 21+05.04 TO STA. 24+00.00 RT

LEGEND

- ① ITEM 448 1 1/2" ASPHALT CONCRETE SURFACE COURSE, TYPE 1, PG 64-22
- ② ITEM 407 TACK COAT FOR INTERMEDIATE COURSE
- ③ ITEM 448 1 3/4" ASPHALT CONCRETE INTERMEDIATE COURSE, TYPE 2, PG 64-22
- ④ ITEM 407 TACK COAT
- ⑤ ITEM 301 4" ASPHALT CONCRETE BASE, PG 64-22
- ⑥ ITEM 304 6" AGGREGATE BASE
- ⑦ ITEM 204 SUBGRADE COMPACTION
- ⑧ ITEM 659 SEEDING AND MULCHING
- ⑨ ITEM 301 3" ASPHALT CONCRETE BASE, PG 64-22
- ⑩ ITEM 606 GUARDRAIL REBUILT, TYPE 5, USING STEEL POSTS
- ⑪ ITEM 609 ASPHALT CONCRETE CURB, TYPE 1
- ⑫ PROPOSED WERTH ROAD - SEE TYPICAL SECTION THIS SHEET
- ⑬ ITEM 304 AGGREGATE BASE
- ⑭ ITEM SPECIAL AGGREGATE (NO. 57 STONE), AS PER PLAN
- ⑮ ITEM SPECIAL FILTER FABRIC, AS PER PLAN
- ⑯ ITEM 203 GRANULAR EMBANKMENT, AS PER PLAN
- ⑰ ITEM 605 4" SHALLOW PIPE UNDERDRAINS 707.31, AS PER PLAN
- (A) EXISTING ASPHALT PAVEMENT 7" AVERAGE DEPTH (ACTUAL THICKNESS MAY VARY)
- (B) EXISTING AGGREGATE BASE 3" AVERAGE DEPTH (ACTUAL THICKNESS MAY VARY)
- (C) EXISTING GUARDRAIL



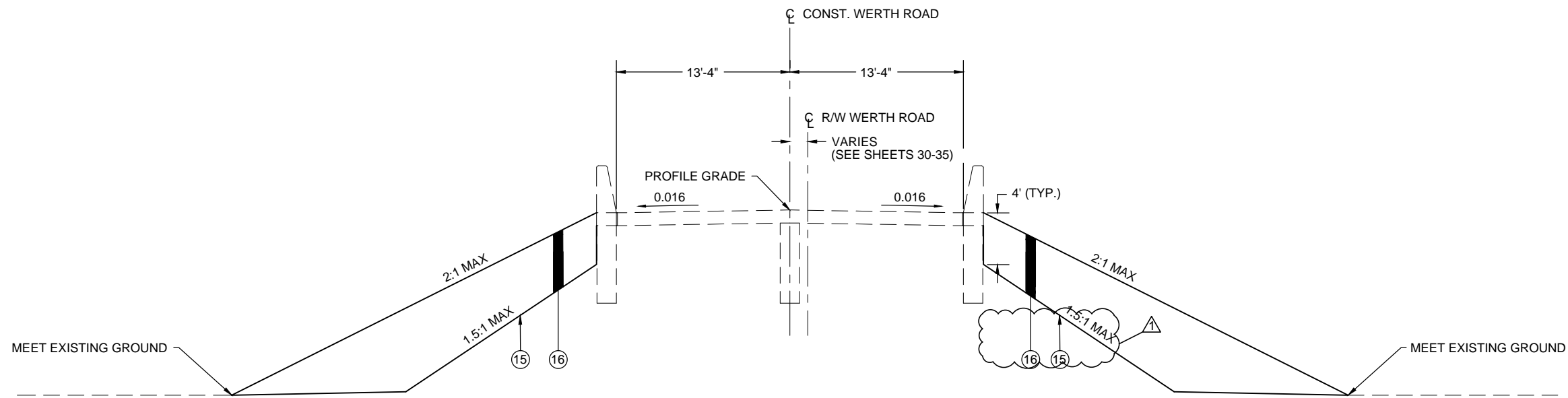
TYPICAL SECTION - EXISTING WERTH ROAD



APPLIES: STA. 16+01.43 TO 18+92.54
 APPLIES: STA. 21+08.74 TO 24+45.56

1	ADDENDUM NO. 1	MS	2-3-14
NO.	REVISIONS	BY	DATE
OHIO TURNPIKE AND INFRASTRUCTURE COMMISSION			
TYPICAL SECTIONS WERTH ROAD			
M.P. 93.5		SANDUSKY COUNTY	
DESIGNED: MRM	CHECKED: BKS	DATE: 12-31-2013	
DRAWN: IDT	IN CHARGE: BKS	SCALE: AS SHOWN	
CONTRACT 70-14-01		SHEET 23 OF 66	

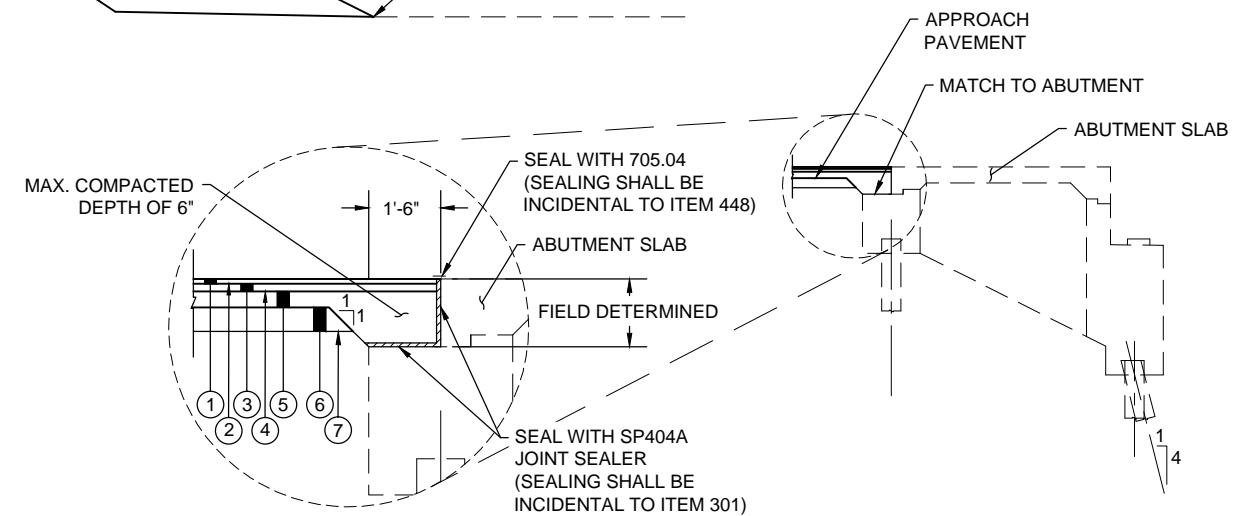
S:\ME\Drawings\132971\Roadway\Plan\93.5\302P\A&M\Werth.Road.dwg 09/23/14 11:51 AM 2:Typical Sections.dwg Layer: Typical Section (1)



ABUTMENT SLAB SECTION WERTH ROAD



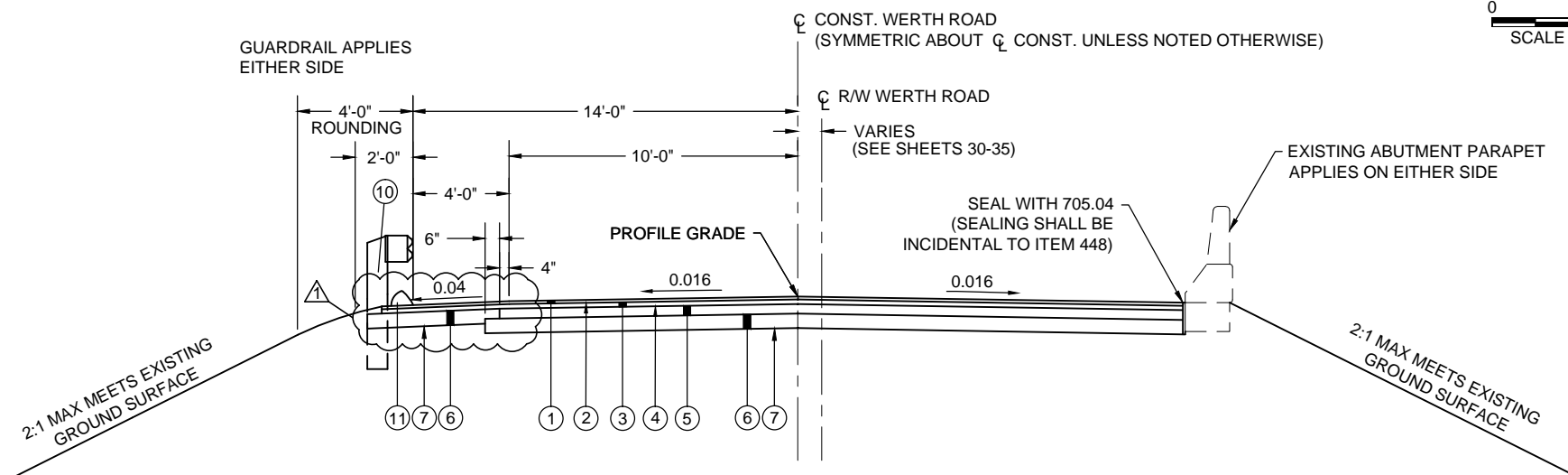
APPLIES: STA. 18+91.74 TO 21+08.26 = 216.52 LIN. FT
 DEDUCT FOR STRUCTURE: STA. 19+03.81 TO 20+96.19 = 192.38 LIN. FT
 TOTAL = 24.14 LIN. FT



DETAIL - APPROACH PAVEMENT AT ABUTMENT



ABUTMENT WERTH ROAD



APPROACH SECTION WERTH ROAD



APPLIES: STA. 18+80.28 TO 18+91.74 = 11.46 LIN. FT
 APPLIES: STA. 21+08.26 TO 21+20.89 = 12.63 LIN. FT
 TOTAL = 24.09 LIN. FT

NOTE: DO NOT DISTURB EXISTING PARAPET.
 FIELD FIT APPROACH PAVEMENT AROUND EXISTING PARAPET.

FOR LEGEND, SEE SHEET 23 OF 66

1	ADDENDUM NO. 1	MS	2-3-14
NO.	REVISIONS	BY	DATE
OHIO TURNPIKE AND INFRASTRUCTURE COMMISSION			
TYPICAL SECTIONS WERTH ROAD			
M.P. 93.5		SANDUSKY COUNTY	
DESIGNED: MRM	CHECKED: BKS	DATE: 12-31-2013	
DRAWN: IDT	IN CHARGE: BKS	SCALE: AS SHOWN	
CONTRACT 70-14-01		SHEET 25 OF 66	

ROADWAY SUBSUMMARY

REF NO.	SHEET NO.	STATION		SIDE	201	202	202	202	202	202	202	606	606	606	606	607
					TREE REMOVED 18-INCH SIZE	PIPE REMOVED	CATCH BASIN REMOVED	GUARDRAIL REMOVED	APPROACH SLAB REMOVED	CURB REMOVED	FENCE REMOVED	GUARDRAIL, TYPE MGS 5	ANCHOR ASSEMBLY, MGS TYPE A	MGS BRIDGE TERMINAL ASSEMBLY, TYPE 1	MGS BRIDGE TERMINAL ASSEMBLY, TYPE 2	FENCE, TYPE 47, AS PER PLAN
		EA	EACH		FT	FT	SY	FT	FT	FT	EACH	EACH	EACH	FT		
R-1	26	18+84.55	18+84.55	LT		19	1									
R-2	26	18+78.41	18+78.41	RT		19	1									
R-3	26	15+07.88	18+93.65	LT												
R-4	26	15+20.64	18+87.69	RT												
R-5	26	18+80.28	18+91.74	LT/RT												
R-6	26	18+83.50	18+94.88	RT												
R-7	26	18+77.27	18+88.96	RT												
R-8	26	19+03.00	19+09.54	LT												
R-9	26	18+79.10	19+03.01	RT												
R-10	26	16+97.37	17+50.00	LT	3											
R-11	26	16+30.88	18+07.22	RT	3											
F-1	26	19+03.00	19+09.54	LT												52
F-2	26	18+79.10	19+03.01	RT												54
GR-1	26	15+03.54	18+94.79	LT								341	1		1	
GR-2	26	15+15.86	18+88.94	RT								323	1	1		
TOTALS CARRIED TO GENERAL SUMMARY					6	38	2	753	41	26	106	664	2	1	1	106

PAVEMENT SUBSUMMARY

REF NO.	SHEET NO.	STATION		SIDE	204	301	304	407	407	288	288	609	SPECIAL	SPECIAL
					SUBGRADE COMPACTION	ASPHALT CONCRETE BASE, PG 64-22	AGGREGATE BASE	TACK COAT	TACK COAT FOR INTERMEDIATE COURSE	ASPHALT CONCRETE SURFACE COURSE, TYPE 1, PG 64-22	ASPHALT CONCRETE INTERMEDIATE COURSE, TYPE 2, PG 64-22	ASPHALT CONCRETE CURB, TYPE 1	AGGREGATE (No. 57 STONE), AS PER PLAN	FILTER FABRIC, AS PER PLAN
		SY	CY		CY	GAL	GAL	CY	CY	FT	CY	SY		
P-1	26	16+01.43	18+80.28	LT/RT	930	71	805	70	70	32	45	452	169	3085
P-2	26	18+80.28	18+91.74	LT/RT	41	3	34	3	3	1	2	33	7	343
TOTALS CARRIED TO GENERAL SUMMARY					971	74	839	73	73	33	47	484	176	3428

NOTE: SEE NOTE ON SHEET 23 FOR ASPHALT CURB LIMITS. TACK COAT AND TACK COAT FOR INTERMEDIATE COURSE ARE TO BE APPLIED AT A RATE OF 0.075 GAL/SY.

EROSION CONTROL SUBSUMMARY


REF NO.	SHEET NO.	STATION		SIDE	659
					SEEDING AND MULCHING
		SY			
EC-1	26	16+01.43	19+16.98	LT	498
EC-2	26	16+01.43	19+08.43	RT	396
TOTALS CARRIED TO GENERAL SUMMARY					894

DRAINAGE SUBSUMMARY

REF NO.	SHEET NO.	STATION		SIDE	511	601	611	611	605	SPECIAL
					CLASS C CONCRETE, HEADWALL	ROCK CHANNEL PROTECTION, TYPE D WITH FILTER	12" CONDUIT, TYPE C, PER ODOT 707.33	CATCH BASIN, No. 3A	4" SHALLOW PIPE UNDERDRAINS 707.31, AS PER PLAN	PRECAST REINFORCED CONCRETE OUTLET
		CY	CY		FT	EACH	FT	EACH		
D-1	26	16+55.00	16+55.00	LT	0.2	0.9	30	1		
D-2	26	16+55.00	16+55.00	RT	0.2	0.9	26	1		
UD-1	26	16+23.49	19+00.00	LT					305	1
UD-2	26	16+19.60	18+50.00	RT					248	1
TOTALS CARRIED TO GENERAL SUMMARY					0.4	1.8	56	2	553	2

TRAFFIC CONTROL SUBSUMMARY

REF NO.	SHEET NO.	STATION		SIDE	626	626
					EDGE LINE, TYPE 1	CENTER LINE, TYPE 1
		MILE	MILE			
EL-1	26	16+01.43	20+00.00	LT	0.08	
CL-1	26	16+01.43	20+00.00	LT/RT		0.08
EL-2	26	16+01.43	20+00.00	RT	0.08	
TOTALS CARRIED TO GENERAL SUMMARY					0.16	0.08

1	ADDENDUM NO. 1	MS	2-3-14
NO.	REVISIONS	BY	DATE
OHIO TURNPIKE AND INFRASTRUCTURE COMMISSION SUBSUMMARY STA. 15+20.00 TO STA. 19+60.00 WERTH ROAD M.P. 93.5 SANDUSKY COUNTY			
			
DESIGNED: MRM	CHECKED: BKS	DATE: 12-31-2013	
DRAWN: IDT	IN CHARGE: BKS	SCALE: AS SHOWN	
CONTRACT 70-14-01		SHEET 27 OF 66	

ROADWAY SUBSUMMARY

REF NO.	SHEET NO.	STATION		SIDE	201	202	202	202	202	202	202	606	606	606	606	607
					TREE REMOVED 18-INCH SIZE	PIPE REMOVED	CATCH BASIN REMOVED	GUARDRAIL REMOVED	APPROACH SLAB REMOVED	CURB REMOVED	FENCE REMOVED	GUARDRAIL, TYPE MGS 5	ANCHOR ASSEMBLY, MGS TYPE A	MGS BRIDGE TERMINAL ASSEMBLY, TYPE 1	MGS BRIDGE TERMINAL ASSEMBLY, TYPE 2	FENCE, TYPE 47, AS PER PLAN
		EA	EACH		FT	FT	SY	FT	FT	FT	EACH	EACH	EACH	FT		
R-12	28	21+22.62	21+22.62	LT		21	1									
R-13	28	21+16.82	21+16.82	RT		16	1									
R-14	28	21+13.59	25+37.11	LT				425								
R-15	28	21+07.79	25+28.51	RT				422								
R-16	28	21+08.26	21+20.89	LT/RT					40							
R-17	28	21+12.58	21+24.08	LT								14				
R-18	28	21+06.35	21+17.98	RT								14				
R-19	28	20+98.49	21+29.99	LT									60			
R-20	28	20+92.07	20+95.01	RT								46				
R-21	28	21+44.37	21+44.37	LT	1											
R-22	28	21+75.86	23+60.88	RT	7											
F-3	28	20+98.49	21+29.99	LT												60
F-4	28	20+92.07	20+95.01	RT												46
GR-3	28	21+12.66	25+41.96	LT							379	1	1			
GR-4	28	21+06.43	25+33.35	RT							377	1	1	1		
TOTALS CARRIED TO GENERAL SUMMARY					8	37	2	847	40	28	106	756	2	1	1	106

DRAINAGE SUBSUMMARY

REF NO.	SHEET NO.	STATION		SIDE	511	601	611	611	605	SPECIAL
					CLASS C CONCRETE, HEADWALL	ROCK CHANNEL PROTECTION, TYPE D WITH FILTER	12" CONDUIT, TYPE C, PER ODOT 707.33	CATCH BASIN, No. 3A	4" SHALLOW PIPE UNDERDRAINS 707.31, AS PER PLAN	PRECAST REINFORCED CONCRETE OUTLET
		CY	CY		FT	EACH	FT	EACH		
D-3	28	23+95.00	23+95.00	LT	0.2	0.9	28	1		
D-4	28	23+95.00	23+95.00	RT	0.2	0.9	23	1		
UD-3	28	21+20.89	24+25.00	LT					309	1
UD-4	28	21+20.89	24+25.00	RT					280	1
TOTALS CARRIED TO GENERAL SUMMARY					0.4	1.8	51	2	589	2

PAVEMENT SUBSUMMARY

REF NO.	SHEET NO.	STATION		SIDE	204	301	304	407	407	288	288	609	SPECIAL	SPECIAL
					SUBGRADE COMPACTION	ASPHALT CONCRETE BASE, PG 64-22	AGGREGATE BASE	TACK COAT	TACK COAT FOR INTERMEDIATE COURSE	ASPHALT CONCRETE SURFACE COURSE, TYPE 1, PG 64-22	ASPHALT CONCRETE INTERMEDIATE COURSE, TYPE 2, PG 64-22	ASPHALT CONCRETE CURB, TYPE 1	AGGREGATE (No. 57 STONE), AS PER PLAN	FILTER FABRIC, AS PER PLAN
		SY	CY		CY	GAL	GAL	CY	CY	FT	CY	SY		
P-3	28	21+08.26	21+20.89	LT/RT	42	3	35	3	3	1	2	37	7	375
P-4	28	21+20.89	24+45.56	LT/RT	1082	83	945	81	81	38	53	546	199	3585
TOTALS CARRIED TO GENERAL SUMMARY					1124	86	980	84	84	39	55	584	206	3960

NOTE: SEE NOTE ON SHEET 23 FOR ASPHALT CURB LIMITS. TACK COAT AND TACK COAT FOR INTERMEDIATE COURSE ARE TO BE APPLIED AT A RATE OF 0.075 GAL/SY.

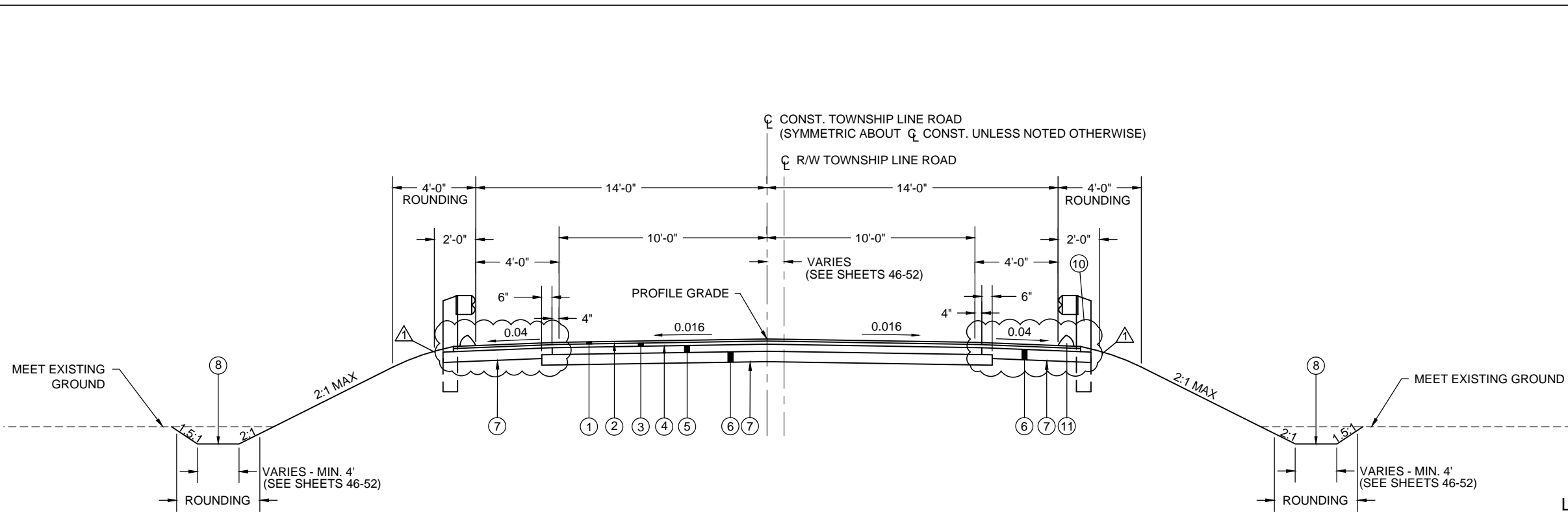
TRAFFIC CONTROL SUBSUMMARY

REF NO.	SHEET NO.	STATION		SIDE	626	626
					EDGE LINE, TYPE 1	CENTER LINE, TYPE 1
		FROM	TO		EDGE LINE, TYPE 1	CENTER LINE, TYPE 1
EL-3	28	20+00.00	24+45.56	LT	0.08	
CL-2	28	20+00.00	24+45.56	LT/RT		0.08
EL-4	28	20+00.00	24+45.56	RT	0.08	
TOTALS CARRIED TO GENERAL SUMMARY					0.16	0.08

EROSION CONTROL SUBSUMMARY

REF NO.	SHEET NO.	STATION		SIDE	659
					SEEDING AND MULCHING
		FROM	TO		SY
EC-3	28	20+72.23	24+45.56	LT	625
EC-4	28	20+67.29	24+45.56	RT	539
TOTALS CARRIED TO GENERAL SUMMARY					1164

1				ADDENDUM NO. 1	MS	2-3-14
NO.				REVISIONS	BY	DATE
<p>OHIO TURNPIKE AND INFRASTRUCTURE COMMISSION</p> <p>SUBSUMMARY STA. 20+40.00 TO STA. 25+20.00 WERTH ROAD M.P. 93.5 SANDUSKY COUNTY</p> <p style="font-size: 2em;">S&ME</p>						
DESIGNED:	MRM	CHECKED:	BKS	DATE:	12-31-2013	
DRAWN:	IDT	IN CHARGE:	BKS	SCALE:	AS SHOWN	
CONTRACT 70-14-01				SHEET 29 OF 66		



TYPICAL SECTION TOWNSHIP LINE ROAD

APPLIES: STA. 295+09.40 TO 298+76.60 = 367.20 LIN. FT
 APPLIES: STA. 301+23.79 TO 304+41.63 = 317.84 LIN. FT
 TOTAL = 685.04 LIN. FT

NOTE: GUARDRAIL SHALL BE REMOVED AND REBUILT (INCLUDING BRIDGE TERMINAL AND ANCHOR ASSEMBLIES) BETWEEN THE FOLLOWING LIMITS:

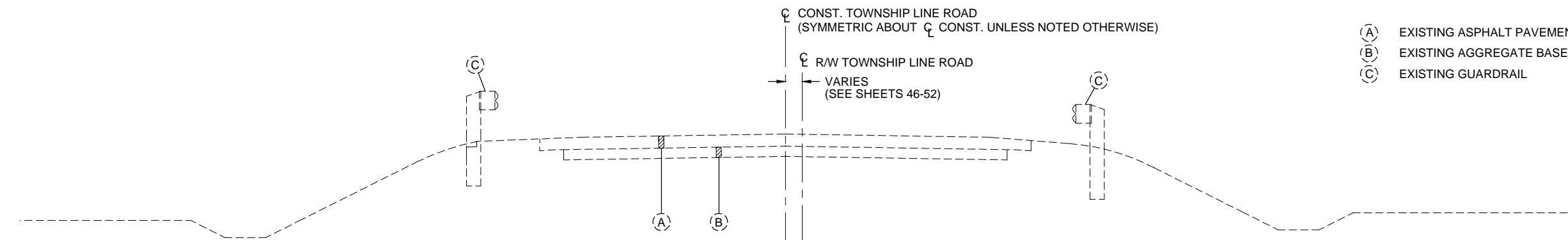
STA. 294+89.59 LT. TO 298+92.05 LT.
 STA. 294+83.80 RT. TO 298+88.17 RT.
 STA. 301+12.68 LT. TO 305+16.38 LT.
 STA. 301+08.59 RT. TO 305+10.55 RT.

NOTE: ITEM 609 - ASPHALT CONCRETE CURB, TYPE 1, SHALL BE PLACED BETWEEN THE FOLLOWING LIMITS:

STA. 295+50.00 LT. TO STA. 298+92.74 LT.
 STA. 295+50.00 RT. TO STA. 298+87.49 RT.
 STA. 301+13.38 LT. TO STA. 303+05.00 LT.
 STA. 301+07.78 RT. TO STA. 303+05.00 RT.

LEGEND

- ① ITEM 448 1 1/4" ASPHALT CONCRETE SURFACE COURSE, TYPE 1, PG 64-22
 - ② ITEM 407 TACK COAT FOR INTERMEDIATE COURSE
 - ③ ITEM 448 1 3/4" ASPHALT CONCRETE INTERMEDIATE COURSE, TYPE 2, PG 64-22
 - ④ ITEM 407 TACK COAT
 - ⑤ ITEM 301 4" ASPHALT CONCRETE BASE, PG 64-22
 - ⑥ ITEM 304 6" AGGREGATE BASE
 - ⑦ ITEM 204 SUBGRADE COMPACTION
 - ⑧ ITEM 659 SEEDING AND MULCHING
 - ⑨ ITEM 301 3" ASPHALT CONCRETE BASE, PG 64-22
 - ⑩ ITEM 606 GUARDRAIL, TYPE MGS 5
 - ⑪ ITEM 609 ASPHALT CONCRETE CURB, TYPE 1
 - ⑫ PROPOSED TOWNSHIP LINE ROAD - SEE TYPICAL SECTION THIS SHEET
 - ⑬ ITEM 304 AGGREGATE BASE
 - ⑭ ITEM SPECIAL AGGREGATE (NO. 57 STONE), AS PER PLAN
 - ⑮ ITEM SPECIAL FILTER FABRIC, AS PER PLAN
 - ⑯ ITEM 203 GRANULAR EMBANKMENT, AS PER PLAN
 - ⑰ ITEM 605 4" SHALLOW PIPE UNDERDRAINS 707.31, AS PER PLAN
- (A) EXISTING ASPHALT PAVEMENT 11" AVERAGE DEPTH (ACTUAL THICKNESS MAY VARY)
 - (B) EXISTING AGGREGATE BASE 9" AVERAGE DEPTH (ACTUAL THICKNESS MAY VARY)
 - (C) EXISTING GUARDRAIL

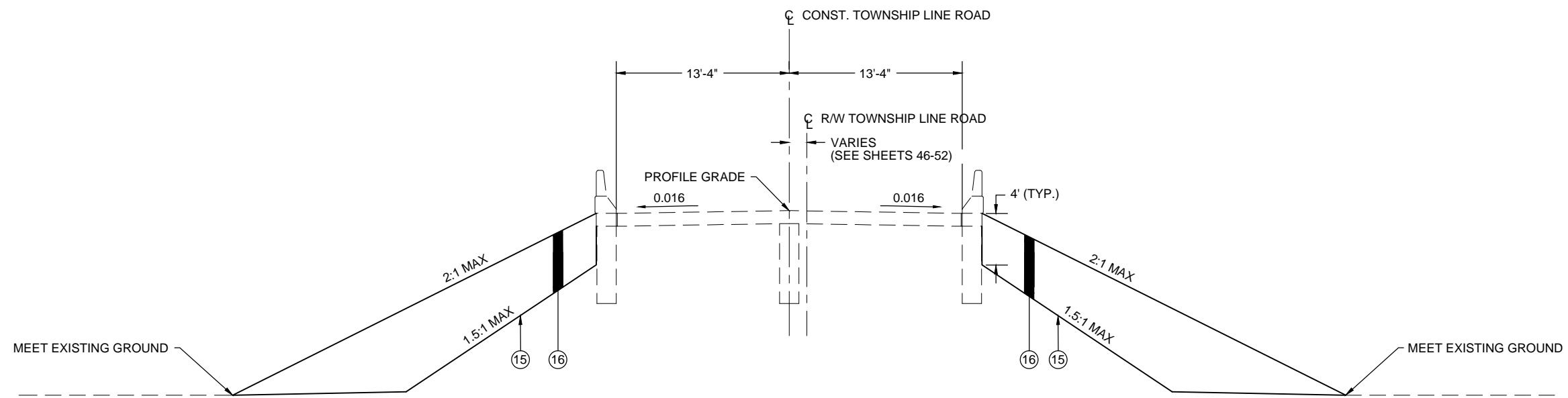


TYPICAL SECTION - EXISTING TOWNSHIP LINE ROAD

0 3 6
 SCALE IN FEET

APPLIES: STA. 295+09.40 TO 298+76.60
 APPLIES: STA. 301+23.79 TO 304+41.63

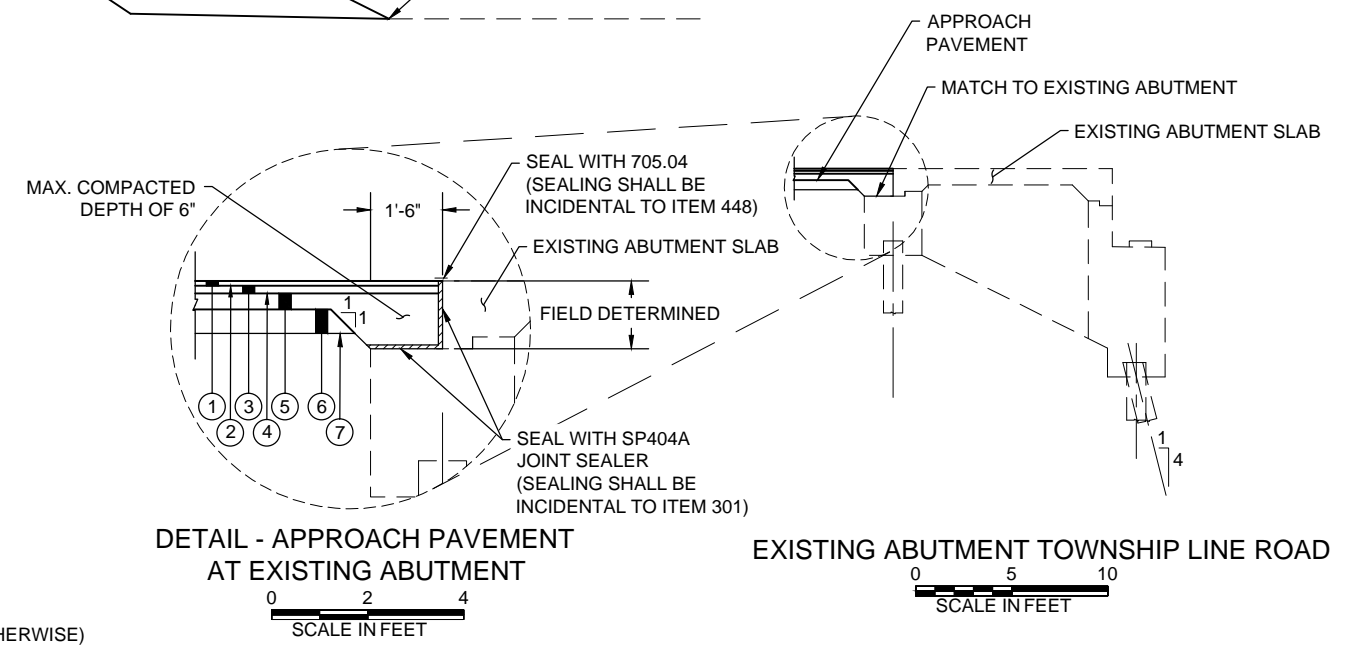
1	ADDENDUM NO. 1	MS	2-3-14
NO.	REVISIONS	BY	DATE
OHIO TURNPIKE AND INFRASTRUCTURE COMMISSION			
TYPICAL SECTIONS TOWNSHIP LINE ROAD			
M.P. 94.1		SANDUSKY COUNTY	
DESIGNED: MRM	CHECKED: BKS	DATE: 12-31-2013	
DRAWN: PRR	IN CHARGE: BKS	SCALE: AS SHOWN	
CONTRACT 70-14-01		SHEET 39 OF 66	



ABUTMENT SLAB SECTION TOWNSHIP LINE ROAD

0 5 10
SCALE IN FEET

APPLIES: STA. 298+90.11 TO 301+10.63 = 220.52 LIN. FT
DEDUCT FOR STRUCTURE: STA. 299+06.86 TO 300+93.88 = 187.02 LIN. FT
TOTAL = 33.50 LIN. FT

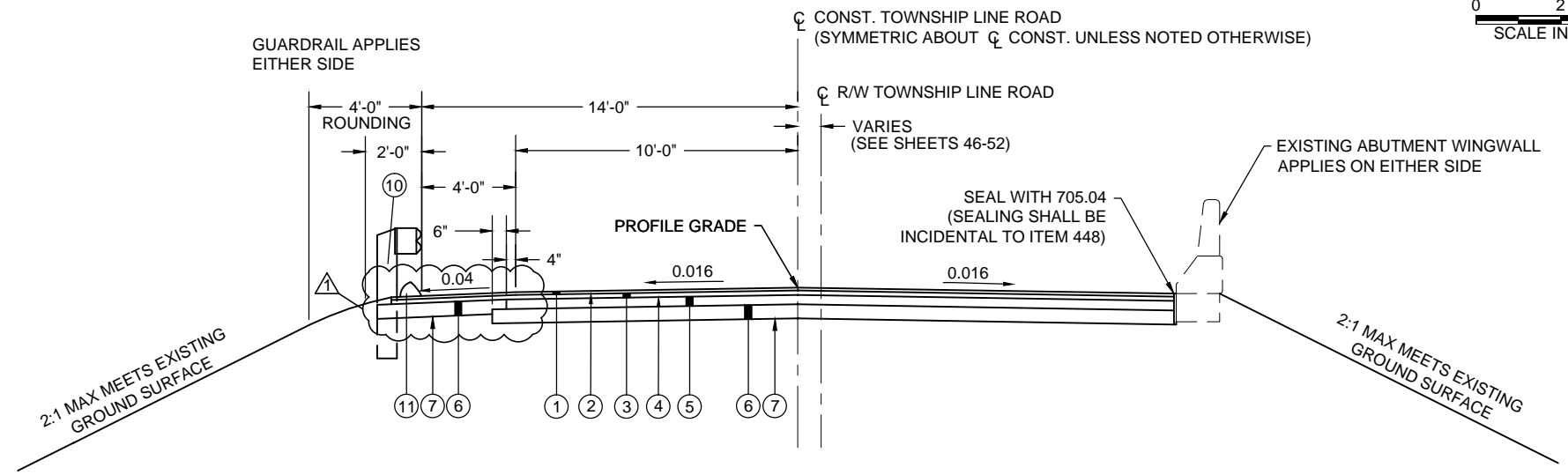


DETAIL - APPROACH PAVEMENT AT EXISTING ABUTMENT

0 2 4
SCALE IN FEET

EXISTING ABUTMENT TOWNSHIP LINE ROAD

0 5 10
SCALE IN FEET



APPROACH SECTION TOWNSHIP LINE ROAD

0 3 6
SCALE IN FEET

APPLIES: STA. 298+76.60 TO 298+90.11 = 13.51 LIN. FT
APPLIES: STA. 301+10.63 TO 301+23.79 = 13.16 LIN. FT
TOTAL = 26.67 LIN. FT

NOTE: DO NOT DISTURB EXISTING WINGWALL.
FIELD FIT APPROACH PAVEMENT AROUND EXISTING WINGWALL.

FOR LEGEND, SEE SHEET 39 OF 66

1	ADDENDUM NO. 1	MS	2-3-14
NO.	REVISIONS	BY	DATE
OHIO TURNPIKE AND INFRASTRUCTURE COMMISSION			
TYPICAL SECTIONS TOWNSHIP LINE ROAD			
M.P. 94.1		SANDUSKY COUNTY	
DESIGNED: MRM	CHECKED: BKS	DATE: 12-31-2013	
DRAWN: PRR	IN CHARGE: BKS	SCALE: AS SHOWN	
CONTRACT 70-14-01		SHEET 41 OF 66	

ROADWAY SUBSUMMARY

REF NO.	SHEET NO.	STATION		SIDE	201	202	202	202	202	202	202	202	606	606	606	607	
		FROM	TO		TREE REMOVED, 18-INCH SIZE	PIPE REMOVED	CATCH BASIN REMOVED	GUARDRAIL REMOVED	APPROACH SLAB REMOVED	CURB REMOVED	FENCE REMOVED	PAVEMENT REMOVED	GUARDRAIL, TYPE MGS 5	ANCHOR ASSEMBLY, MGS TYPE A	MGS BRIDGE TERMINAL ASSEMBLY, TYPE 1	MGS BRIDGE TERMINAL ASSEMBLY, TYPE 2	FENCE, TYPE 47, AS PER PLAN
					EA	EACH	FT	FT	SY	FT	FT	SY	FT	EACH	EACH	EACH	FT
R-1	42	298+74.36	298+74.36	LT		50	1										
R-2	42	298+68.17	298+68.17	RT		49	1										
R-3	42	294+94.53	298+96.47	LT				402									
R-4	42	294+88.86	298+91.11	RT				402									
R-5	42	298+76.60	298+90.11	LT/RT					37								
R-6	42	298+62.99	298+92.57	LT						30							
R-7	42	298+56.47	298+87.14	RT						31							
R-8	42	298+95.75	299+08.51	LT							61						
R-9	42	298+58.43	299+02.58	RT							74						
R-10	42	298+81.15	299+05.55	LT								23					
R-11	42	298+55.12	298+82.40	RT								19					
R-12	42	297+85.11	298+73.07	LT	2												
F-1	42	298+95.75	298+08.51	LT													61
F-2	42	298+58.43	299+02.58	RT													74
GR-1	42	294+89.59	298+92.74	LT									353	1		1	
GR-2	42	294+83.80	298+87.40	RT									354	1	1		
TOTALS CARRIED TO GENERAL SUMMARY					2	99	2	804	37	61	135	42	707	2	1	1	135

DRAINAGE SUBSUMMARY

REF NO.	SHEET NO.	STATION		SIDE	511	601	601	603	604	605	SPECIAL
		FROM	TO		CLASS C CONCRETE, HEADWALL	ROCK CHANNEL PROTECTION, TYPE C WITH FILTER	ROCK CHANNEL PROTECTION, TYPE D WITH FILTER	12" CONDUIT, TYPE C, PER ODOT 707.33	CATCH BASIN, No. 3A	4" SHALLOW PIPE UNDERDRAINS 707.31, AS PER PLAN	PRECAST REINFORCED CONCRETE OUTLET
					CY	CY	CY	FT	EACH	FT	EACH
D-1	42	295+55.00	295+55.00	LT	0.2		0.9	21	1		
D-2	42	295+55.00	295+55.00	RT	0.2		0.9	21	1		
D-3	42	298+81.22	299+17.01	LT		17					
D-4	42	298+55.10	298+91.50	RT		15					
UD-1	42	295+23.23	298+50.00	LT							344
UD-2	42	295+22.86	298+50.00	RT							344
TOTALS CARRIED TO GENERAL SUMMARY					0.4	32	1.8	42	2	688	2

PAVEMENT SUBSUMMARY

REF NO.	SHEET NO.	STATION		SIDE	204	301	304	407	407	448	448	609	SPECIAL	SPECIAL
		FROM	TO		SUBGRADE COMPACTION	ASPHALT CONCRETE BASE, PG 64-22	AGGREGATE BASE	TACK COAT	TACK COAT FOR INTERMEDIATE COURSE	ASPHALT CONCRETE SURFACE COURSE, TYPE 1, PG 64-22	ASPHALT CONCRETE INTERMEDIATE COURSE, TYPE 2, PG 64-22	ASPHALT CONCRETE CURB, TYPE 1	AGGREGATE (No. 57 STONE), AS PER PLAN	FILTER FABRIC, AS PER PLAN
					SY	CY	CY	GAL	GAL	CY	CY	FT	CY	SY
P-1	42	295+09.40	298+76.60	LT/RT	1224	94	1078	92	92	43	60	645	227	4010
P-2	42	298+76.60	298+90.11	LT/RT	45	3	38	3	3	2	2	36	8	443
TOTALS CARRIED TO GENERAL SUMMARY					1269	97	1116	95	95	45	62	681	235	4453

NOTE: SEE NOTE ON SHEET 39 FOR ASPHALT CURB LIMITS
TACK COAT AND TACK COAT FOR INTERMEDIATE COURSE ARE TO BE APPLIED AT A RATE OF 0.075 GAL/SY.

TRAFFIC CONTROL SUBSUMMARY

REF NO.	SHEET NO.	STATION		SIDE	642	642
		FROM	TO		EDGE LINE, TYPE 1	CENTER LINE, TYPE 1
					MILE	MILE
EL-1	42	295+09.14	298+92.05	LT	0.07	
CL-1	42	295+09.14	298+90.11	LT/RT		0.07
EL-2	42	295+09.14	298+88.17	RT	0.07	
TOTALS CARRIED TO GENERAL SUMMARY					0.14	0.07

EROSION CONTROL SUBSUMMARY

REF NO.	SHEET NO.	STATION		SIDE	659
		FROM	TO		SEEDING AND MULCHING
					SY
EC-1	42	295+09.14	299+12.47	LT	923
EC-2	42	295+09.14	298+74.79	RT	787
TOTALS CARRIED TO GENERAL SUMMARY					1710

1	ADDENDUM NO. 1	MS	2-3-14
NO.	REVISIONS	BY	DATE
OHIO TURNPIKE AND INFRASTRUCTURE COMMISSION			
SUBSUMMARY			
STA. 294+80.00 TO STA. 299+60.00			
TOWNSHIP LINE ROAD			
M.P. 94.1		SANDUSKY COUNTY	
DESIGNED: MRM	CHECKED: BKS	DATE: 12-31-2013	
DRAWN: PRR	IN CHARGE: BKS	SCALE: N.T.S.	
CONTRACT 70-14-01		SHEET 43 OF 66	

S&ME Filename: \\S&ME\shared\magnus\proj\2013\70-14-01\Drawings\Lin Road - 02\2013 - Subsummary.dwg Layout: Subsummary.dwg

ROADWAY SUBSUMMARY

REF NO.	SHEET NO.	STATION		SIDE	202	202	202	202	202	202	202	606	606	606	606	607
					PIPE REMOVED EACH	CATCH BASIN REMOVED FT	GUARDRAIL REMOVED FT	APPROACH SLAB REMOVED SY	CURB REMOVED FT	FENCE REMOVED FT	PAVEMENT REMOVED SY	GUARDRAIL, TYPE MGS 5 FT	ANCHOR ASSEMBLY, MGS TYPE A EACH	MGS BRIDGE TERMINAL ASSEMBLY, TYPE 1 EACH	MGS BRIDGE TERMINAL ASSEMBLY, TYPE 2 EACH	FENCE, TYPE 47, AS PER PLAN FT
R-13	44	301+33.39	301+33.39	LT	44	1										
R-14	44	301+27.46	301+27.46	RT	44	1										
R-15	44	301+09.54	305+11.31	LT			402									
R-16	44	301+03.91	305+05.51	RT			402									
R-17	44	301+10.63	301+23.79	LT/RT				36								
R-18	44	301+13.34	301+44.84	LT					32							
R-19	44	301+07.83	301+38.85	RT					31							
R-20	44	300+99.52	303+52.17	LT						233						
R-21	44	300+92.67	301+04.57	RT						55						
R-22	44	301+03.05	301+36.89	LT							27					
R-23	44	300+77.21	301+13.79	RT							34					
F-3	44	300+99.52	303+52.17	LT												240
F-4	44	300+92.67	301+04.57	RT												55
GR-3	44	301+13.38	305+16.38	LT							353	1	1			
GR-4	44	301+07.78	305+10.55	RT							353	1		1		
TOTALS CARRIED TO GENERAL SUMMARY					88	2	804	36	63	288	61	706	2	1	1	295

DRAINAGE SUBSUMMARY

REF NO.	SHEET NO.	STATION		SIDE	511	601	601	611	611	611	605	SPECIAL
					CLASS C CONCRETE, HEADWALL CY	ROCK CHANNEL PROTECTION, TYPE C WITH FILTER CY	ROCK CHANNEL PROTECTION, TYPE D WITH FILTER CY	12" CONDUIT, TYPE B, PER ODOT 707.33 FT	12" CONDUIT, TYPE C, PER ODOT 707.33 FT	CATCH BASIN, No. 3A EACH	4" SHALLOW PIPE UNDERDRAINS 707.31, AS PER PLAN FT	PRECAST REINFORCED CONCRETE OUTLET EACH
D-5	44	303+00.00	303+00.00	LT	0		0.9	25		1		
D-6	44	303+00.00	303+00.00	RT	0.2				34	1		
D-7	44	301+02.10	301+36.99	LT		12						
D-8	44	300+77.45	301+13.15	RT		13						
UD-3	44	301+50.00	304+28.65	LT							295	1
UD-4	44	301+23.79	304+26.82	RT							321	1
TOTALS CARRIED TO GENERAL SUMMARY					0.2	25	0.9	25	34	2	616	2

PAVEMENT SUBSUMMARY

REF NO.	SHEET NO.	STATION		SIDE	204	301	304	407	407	448	448	609	SPECIAL	SPECIAL
					SUBGRADE COMPACTION SY	ASPHALT CONCRETE BASE, PG 64-22 CY	AGGREGATE BASE CY	TACK COAT GAL	TACK COAT FOR INTERMEDIATE COURSE GAL	ASPHALT CONCRETE SURFACE COURSE, TYPE 1, PG 64-22 CY	ASPHALT CONCRETE INTERMEDIATE COURSE, TYPE 2, PG 64-22 CY	ASPHALT CONCRETE CURB, TYPE 1 FT	AGGREGATE (No. 57 STONE), AS PER PLAN CY	FILTER FABRIC, AS PER PLAN SY
P-3	44	301+10.63	301+23.79	LT/RT	44	3	27	3	3	2	2	26	8	482
P-4	44	301+23.79	304+41.63	LT/RT	1059	81	929	79	79	37	52	355	196	3413
TOTALS CARRIED TO GENERAL SUMMARY					1103	84	956	82	82	39	54	381	204	3895


NOTE: SEE NOTE ON SHEET 39 FOR ASPHALT CURB LIMITS
TACK COAT AND TACK COAT FOR INTERMEDIATE COURSE ARE TO BE APPLIED AT A RATE OF 0.075 GAL/SY.

TRAFFIC CONTROL SUBSUMMARY

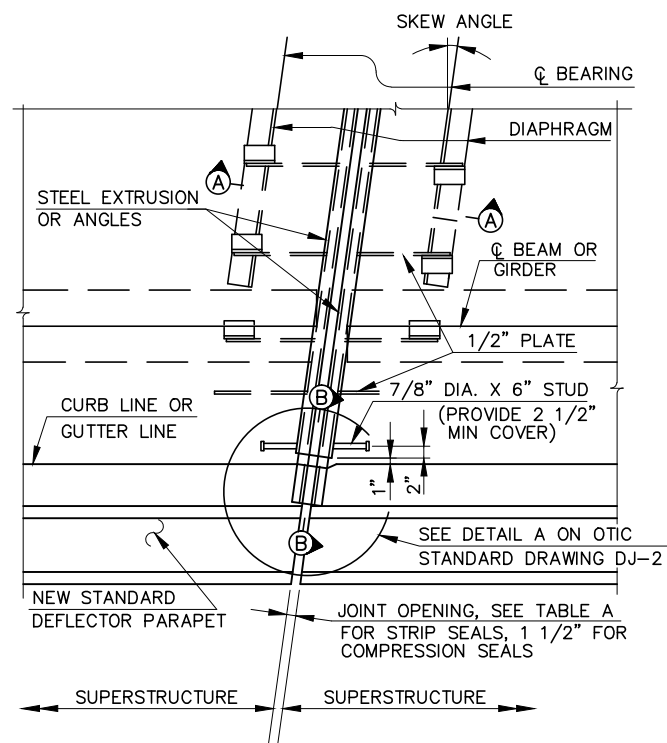
REF NO.	SHEET NO.	STATION		SIDE	642	642
					EDGE LINE, TYPE 1 MILE	CENTER LINE, TYPE 1 MILE
EL-3	44	301+12.68	304+41.63	LT	0.06	
CL-2	44	301+10.63	304+41.63	LT/RT		0.06
EL-4	44	301+08.59	304+41.63	RT	0.06	
TOTALS CARRIED TO GENERAL SUMMARY					0.12	0.06

EROSION CONTROL SUBSUMMARY

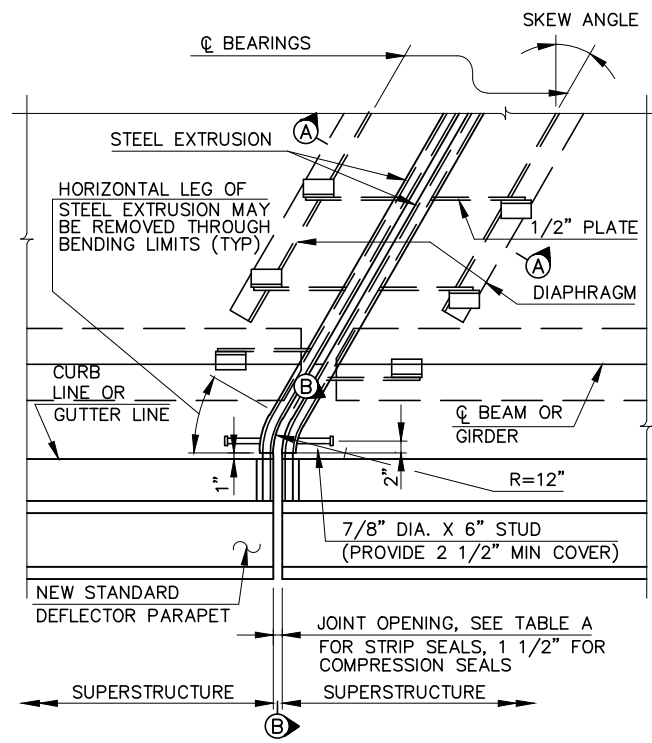
REF NO.	SHEET NO.	STATION		SIDE	659
					SEEDING AND MULCHING SY
EC-3	44	301+15.00	303+00.00	LT	282
EC-4	44	300+85.38	303+00.00	RT	649
TOTALS CARRIED TO GENERAL SUMMARY					931

1	ADDENDUM NO. 1	MS	2-3-14
NO.	REVISIONS	BY	DATE
OHIO TURNPIKE AND INFRASTRUCTURE COMMISSION			
SUBSUMMARY STA. 300+40.00 TO STA. 304+80.00 TOWNSHIP LINE ROAD M.P. 94.1 SANDUSKY COUNTY			
			
DESIGNED: MRM	CHECKED: BKS	DATE: 12-31-2013	
DRAWN: PRR	IN CHARGE: BKS	SCALE: N.T.S.	
CONTRACT 70-14-01		SHEET 45 OF 66	

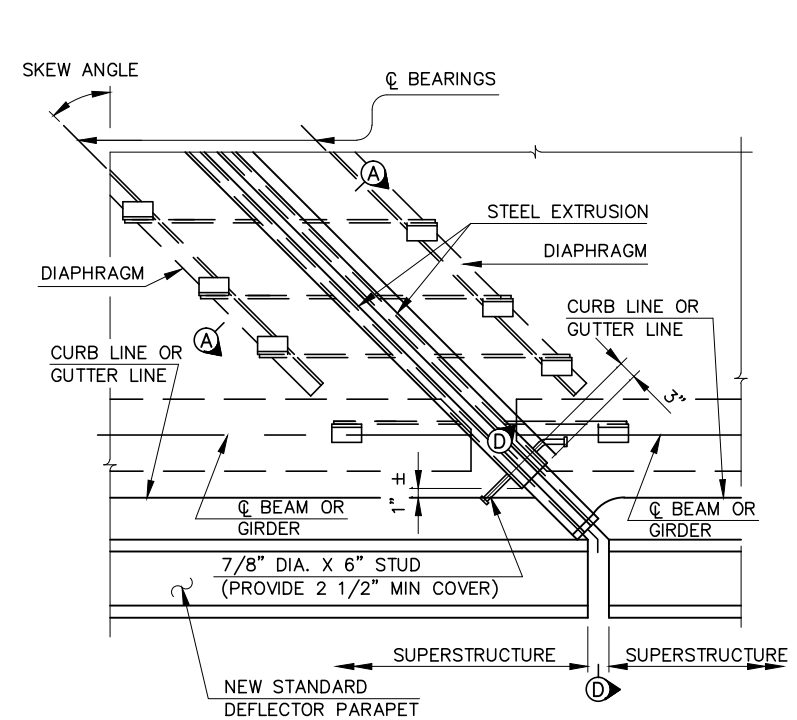
S&ME Filename: \\SPP\Fiscals\mrg\proj\2014\2014-2015\301PA\ASB\Drawings\Lin Road_501425_Subsummary.dwg Layer: Subsummary Plot Date: 5/23/15



PLAN - SKEW ANGLE < 10°
(STRIP SEAL SHOWN, COMPRESSION SEAL SIMILAR)



PLAN - SKEW ANGLE 10° TO 45°
(STRIP SEAL SHOWN, COMPRESSION SEAL SIMILAR)

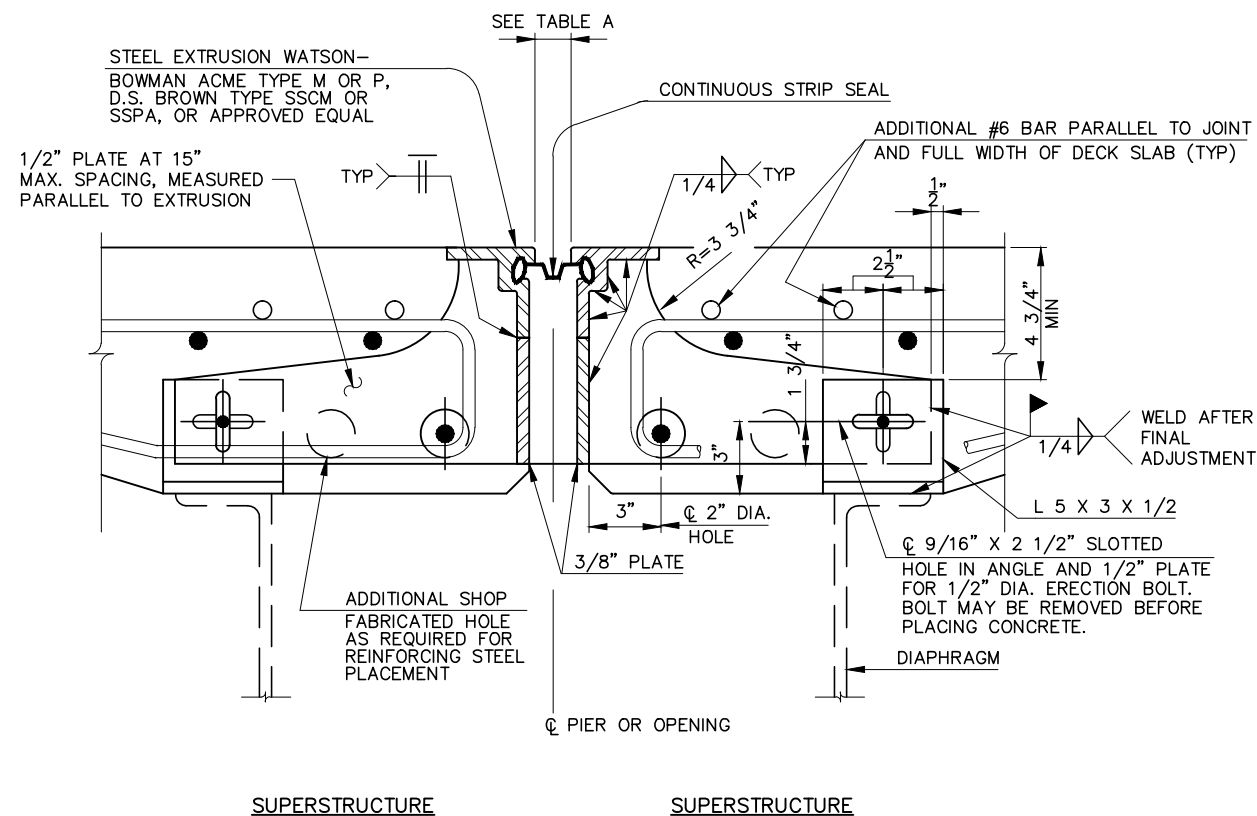


PLAN - SKEW ANGLE > 45° (STRIP SEAL ONLY)

NOTE: WHEN SKEW ANGLE IS GREATER THAN 45°, FURNISH JOINT ASSEMBLIES IN TWO SECTIONS AND PROVIDE A FIELD SPLICE AT THE CENTERLINE OF ROADWAY.

TABLE A

STRIP SEAL SIZE	STRIP SEAL JOINT OPENING							
	TEMPERATURE °F							
	30	40	50	60	70	80	90	
3"	2 1/4"	2 1/8"	2"	1 7/8"	1 3/4"	1 5/8"	1 1/2"	
4"	2 5/8"	2 1/2"	2 1/2"	2 3/8"	2 1/4"	2 1/8"	2"	
5"	2 7/8"	2 3/4"	2 3/4"	2 5/8"	2 5/8"	2 1/2"	2 3/8"	



SECTION A-A (STRIP SEAL)

WATSON-BOWMAN ACME TYPE M,
D.S. BROWN TYPE SSCM EXTRUSIONS SHOWN.

GENERAL NOTES:

1. **INSTALLATION OF SEAL:** DURING INSTALLATION OF SUPPORT/ARMOR FOR THE JOINT SEAL, THE SEATING OF BEAMS ON BEARINGS SHALL BE CAREFULLY OBSERVED TO ASSURE THAT POSITIVE BEARING IS MAINTAINED. PROPER VERTICAL FIT OF THE SUPPORT/ARMOR ON THE BEAMS SHALL BE ACHIEVED BY POSITIONING OF THE SUPPORT ANGLES RATHER THAN BY CLAMPING FORCE.
2. ELASTOMERIC COMPRESSION SEALS SHALL BE USED AT FIXED JOINTS ONLY, AND AT SKEWS LESS THAN 45°.
3. STUD ANCHORS SHALL BE LOW CARBON STEEL ASTM A-108.
4. THE MINIMUM LENGTH OF RETAINER SHALL BE 6'-0" BETWEEN JOINTS UNLESS OTHERWISE SHOWN.
5. JOINTS IN EXTRUSIONS SHALL HAVE WATERTIGHT, PARTIAL PENETRATION BUTT WELDS COMPLETELY AROUND THE OUTER PERIPHERY OF THE ABUTTING SURFACES. WELDS WHICH WILL BE IN CONTACT WITH THE SEAL AND/OR ANCHOR PLATES SHALL BE GROUND SMOOTH.
6. CONTRACTOR SHALL VERIFY ALL DIMENSIONS PRIOR TO FABRICATION.
7. ELASTOMERIC COMPRESSION SEALS SHALL BE WATSON-BOWMAN ACME WJ-200, D.S. BROWN C-V 2000, ERIE METAL SPECIALTIES BR200 OR APPROVED EQUAL.
8. CONTINUOUS STRIP SEALS SHALL BE AS MANUFACTURED BY WATSON-BOWMAN ACME, D.S. BROWN OR APPROVED EQUAL, AND SHALL BE THE SIZE AS SPECIFIED. SEE STRIP SEAL SELECTION TABLE.
9. DETAILS AT DIAPHRAGMS SHOWN, DETAILS AT BEAMS OR GIRDERS SIMILAR.
10. TRANSVERSE JOINTS IN COMPRESSION SEAL ARMOR AND VERTICAL LEGS OF EXTRUSIONS SHALL HAVE COMPLETE PENETRATION BUTT WELDS. WELDS WHICH WILL BE IN CONTACT WITH SEALS SHALL BE GROUND FLUSH.
11. STEEL ARMOR COATING: FINISHED STEEL ASSEMBLY SHALL BE METALIZED, SEE SP533.
12. FOR SECTIONS B-B & D-D AND DETAIL A, SEE OTIC STANDARD DRAWING DJ-2.

**OHIO TURNPIKE AND
INFRASTRUCTURE COMMISSION**

**DECK JOINT DETAILS
AT PIERS**

DATE: JUNE 25, 2007 SCALE: N.T.S.
O.T.I.C. STANDARD DRAWING DJ-5