

**OHIO TURNPIKE AND
INFRASTRUCTURE COMMISSION**

ADDENDUM NO. 1

**PROJECT NO. 25-16-01
REPAIRS AND RESURFACING
OSHP POST 90 PARKING LOT
MILEPOST 118.50
ERIE COUNTY, OHIO**

OPENING DATE: 2:00 P.M. (EASTERN TIME), MAY 20, 2016

ALL BIDS MUST BE ELECTRONICALLY SUBMITTED THROUGH BID EXPRESS


ATTENTION OF BIDDERS IS DIRECTED TO:

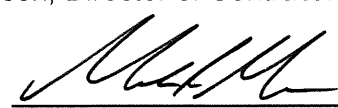
ANSWERS TO QUESTIONS RECEIVED THROUGH 10:AM ON MAY 17, 2016

-AND-

REVISIONS TO PLAN SHEET 2 OF 3

Issued by the Ohio Turnpike and Infrastructure Commission on May 17, 2016. Issuance authorized by Dennis Albrecht, Acting Chief Engineer, and Mark Musson, Director of Contract Administration.


Dennis Albrecht Date 5/17/16


Mark Musson Date 5/17/16

**OHIO TURNPIKE AND INFRASTRUCTURE COMMISSION
ADDENDUM NO. 1
PROJECT NO. 25-16-01**

QUESTIONS AND ANSWERS THROUGH 10:00 AM ON MAY 17, 2016

Q#1 On Sheet 2/3 the typical(s) legend shows #1 item as a 2.0" – 448 Asphalt Concrete Intermediate Course, TY 2, Medium, but the proposal (on website) has a bid item for 448 AC Surface Course, TY 1, medium. Which is correct? Is the intent to use pg64-22 liquid?

A#1 The Contractor shall supply a 448 Asphalt Concrete Surface Course, Type 1 Medium using a PG64-22 binder. This Addendum No. 1 modifies Plan Sheet 2 of 3 to correct the Typical(s) Legend accordingly. The revised Plan Sheet is incorporated into the Contract Documents with this Addendum No. 1.

Q#2 Who is responsible on removing and replacing the parking bumpers?

A#2 The Commission will remove and replace the parking bumpers with its own forces.

Q#3 Is the intent to pave under and behind the guardrail located in front of the gravel impound yard?

A#3 The Contractor is not required to pave under or behind the guardrail in front of the impound yard. The intent of the Plans is to have the Contractor pave to the face of the guardrail.

MODIFIED CONTRACT DOCUMENTS

With this Addendum No. 1, the Commission substitutes the revised Plan Sheet 2 of 3 for the Plan Sheet originally included with the bid.

Additions to the Plan Drawings are called out with a cloud and deletions are marked with a revision triangle as thus:



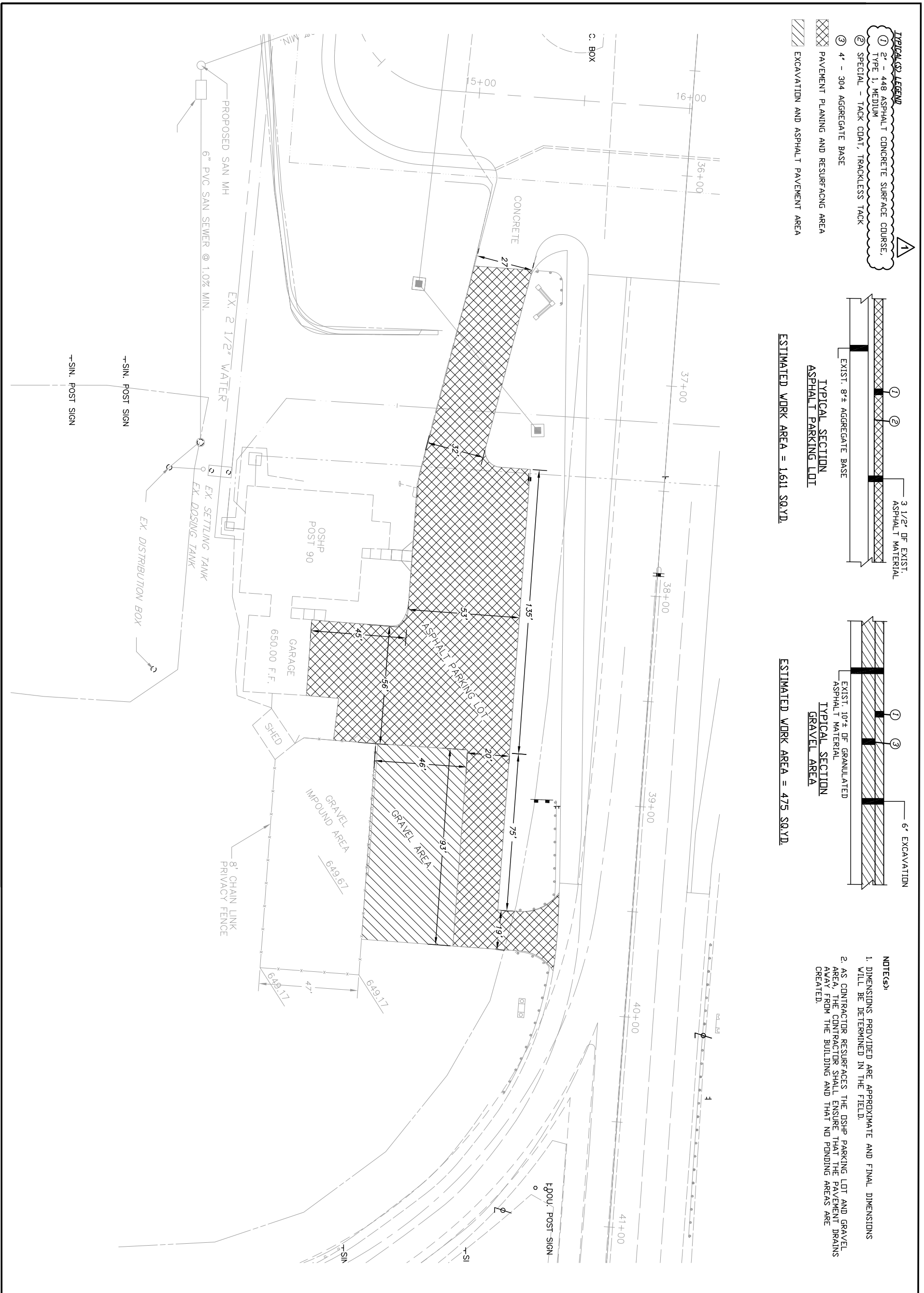
Bidders Acknowledgment of Addendum No. 1
to Contract No. 25-16-01:

(Firm Name)

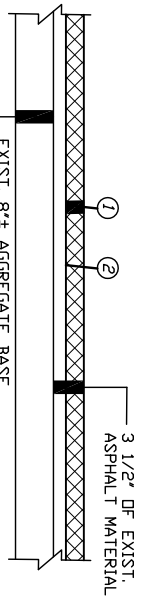
(Signature)

(Printed Name)

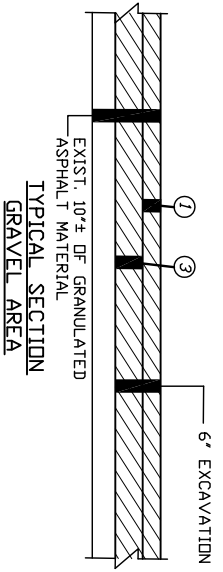
Date: _____



- TYPICALS LEGEND**
- ① 2" - 448 ASPHALT CONCRETE SURFACE COURSE, TYPE 1, MEDIUM
 - ② SPECIAL - TACK COAT, TRACKLESS TACK
 - ③ 4" - 304 AGGREGATE BASE
- ▨ PAVEMENT PLANING AND RESURFACING AREA
- ▧ EXCAVATION AND ASPHALT PAVEMENT AREA



ESTIMATED WORK AREA = 1,611 SQ.YD.



ESTIMATED WORK AREA = 475 SQ.YD.

- NOTES:**
1. DIMENSIONS PROVIDED ARE APPROXIMATE AND FINAL DIMENSIONS WILL BE DETERMINED IN THE FIELD.
 2. AS CONTRACTOR RESURFACES THE OSHP PARKING LOT AND GRAVEL AREA, THE CONTRACTOR SHALL ENSURE THAT THE PAVEMENT DRAINS AWAY FROM THE BUILDING AND THAT NO PENDING AREAS ARE CREATED.

<div style="border: 1px solid black; border-radius: 50%; width: 30px; height: 30px; display: flex; align-items: center; justify-content: center;"> 2 3 </div>	PROJECT 25-16-01	OSHP POST 90 PARKING LOT RESURFACING AND REPAIRS	DESIGNED JJS	CHECKED TWB	NO. A	REVISIONS ADDENDUM No. 1	BY JJS	DATE 5/17/16	DESIGN AGENCY OHIO TURNPIKE
			DRAWN JJS	IN CHARGE DCA	-	-	-	-	