

OHIO TURNPIKE AND
INFRASTRUCTURE COMMISSION

ADDENDUM NO. 2

PROJECT NO. 43-17-03
BRIDGE DECK REPAIR AND REHABILITATION
ARLINGTON ROAD OVER OHIO TURNPIKE M.P. 122.3,
JOPPA ROAD OVER OHIO TURNPIKE M.P. 128.5,
DEAN ROAD OVER OHIO TURNPIKE M.P. 132.4,
WEST RIVER ROAD OVER OHIO TURNPIKE M.P. 145.8,
ERIE AND LORAIN COUNTIES, OHIO

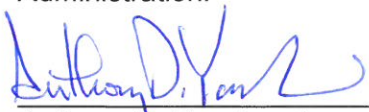
OPENING DATE EXTENDED TO: 2:00 P.M. (EASTERN TIME), DECEMBER 20 27, 2016

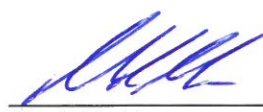
ALL BIDS MUST BE ELECTRONICALLY SUBMITTED THROUGH BID EXPRESS

ATTENTION OF BIDDERS IS DIRECTED TO:

QUESTIONS AND ANSWERS THROUGH 1:00 PM ON DECEMBER 16, 2016
MODIFICATIONS TO THE NOTICE AND COVER PAGE EXTENDING THE OPENING

Issued by the Ohio Turnpike and Infrastructure Commission on December 16, 2016. Issuance authorized by Anthony D. Yacobucci, Chief Engineer, and Mark R. Musson, Director of Contracts Administration.


Anthony D. Yacobucci 12-16-16
Date


Mark R. Musson 12/16/16
Date

**OHIO TURNPIKE AND INFRASTRUCTURE COMMISSION
ADDENDUM NO. 2
PROJECT NO. 43-17-03**

QUESTIONS AND ANSWERS THROUGH 12:00PM ON DECEMBER 16, 2016

Q#10 The plan set posted on BidExpress is missing OTIC Standard Drawing DJ-2.

A#10 The Commission is furnishing Standard Drawing DJ-2 with the Addendum No. 2.

The following changes are made to the Contract Documents for Contract No. 43-17-03:

The Notice to Bidders and Cover Page are modified to extend the bid opening date one week from 2:00PM on December 20, 2016 to 2:00PM on December **27**, 2016

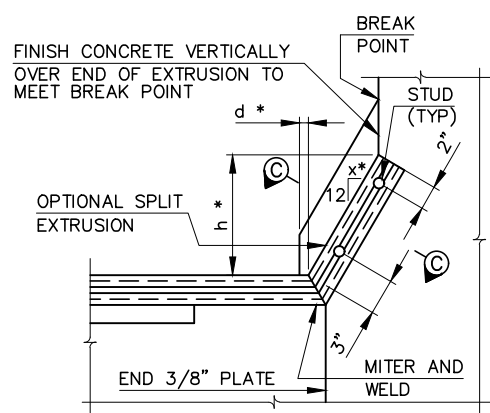
Addendum No. 2 to Contract 43-17-03:

(Firm Name)

(Signature)

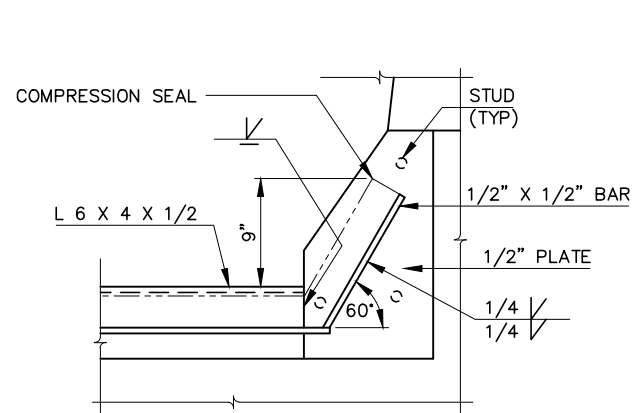
(Printed Name)

Date: _____

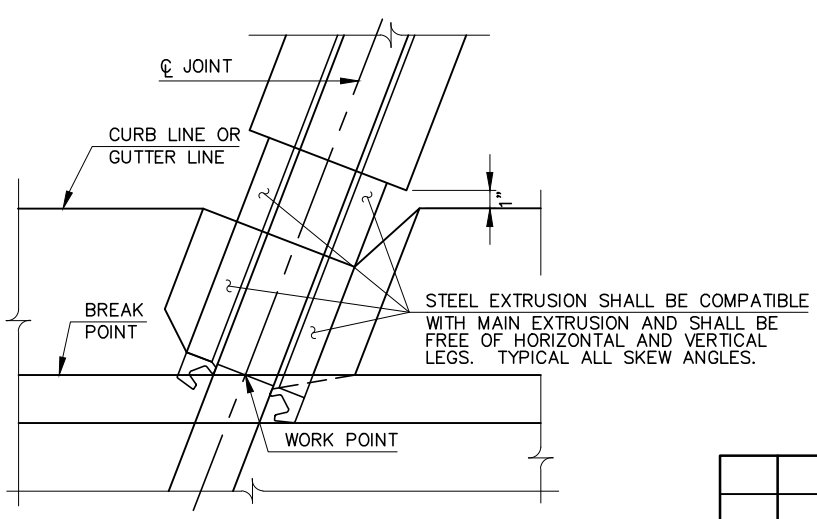


SECTION B-B (STRIP SEAL)

* SEE TABLE B FOR VALUE

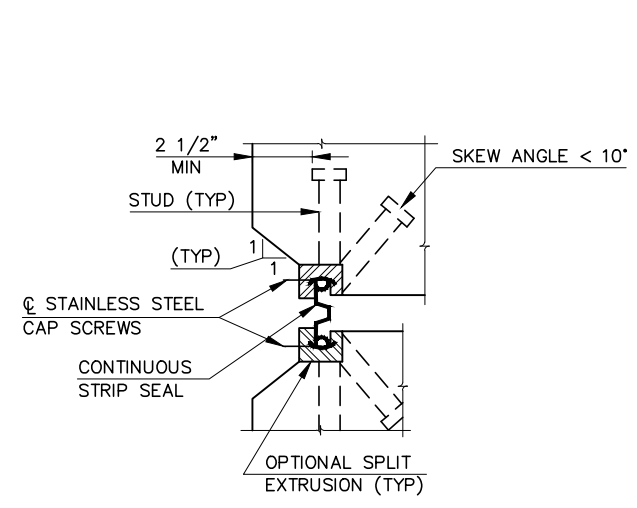


SECTION B-B (COMPRESSION SEAL)

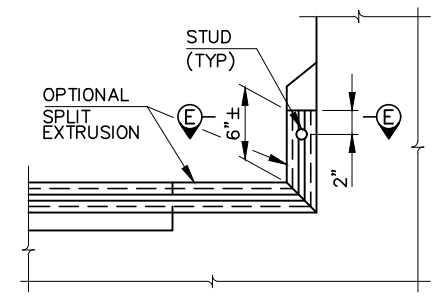


DETAIL A

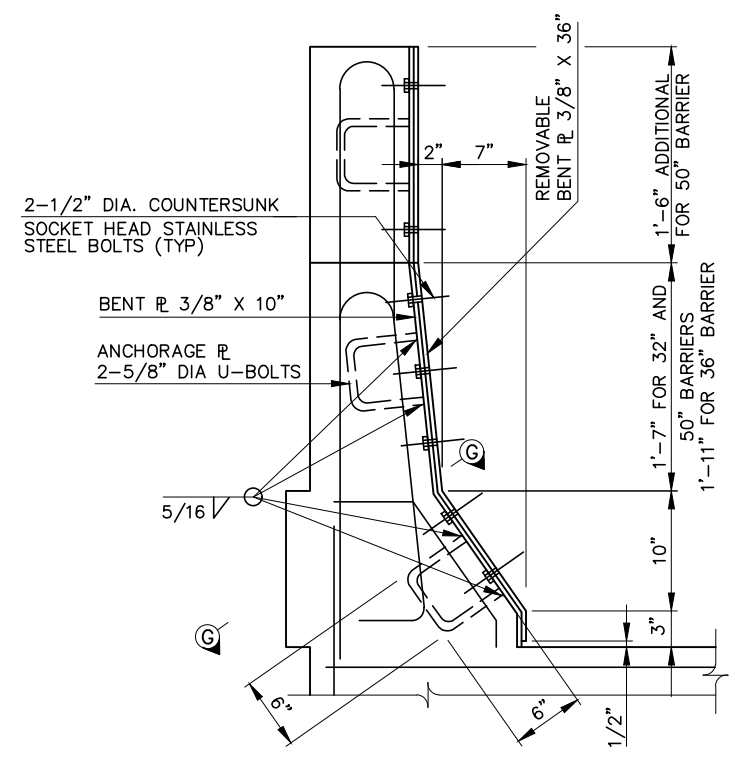
NOTE: FOR JOINT DETAILS IN SIDEWALK, SEE OTIC STANDARD DRAWING DJ-3



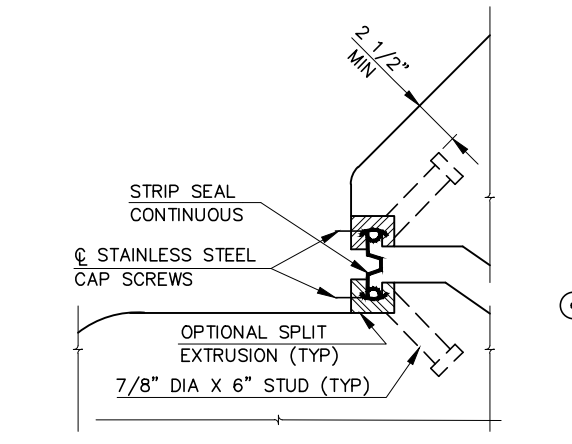
SECTION C-C



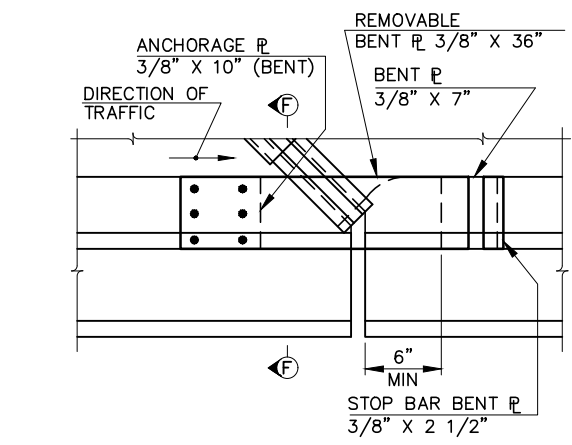
SECTION D-D



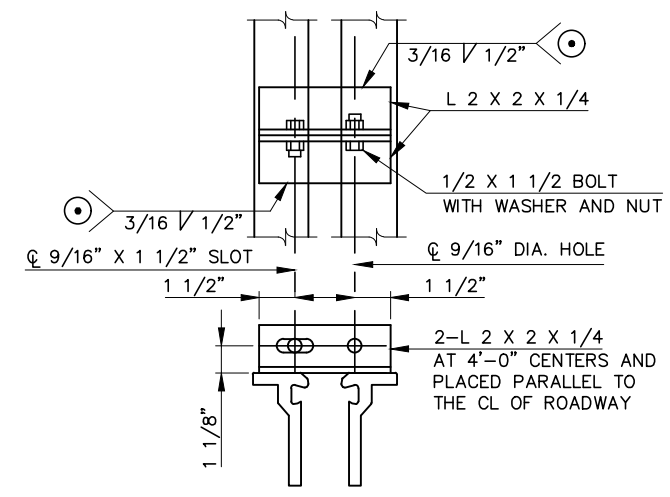
SECTION F-F



SECTION E-E

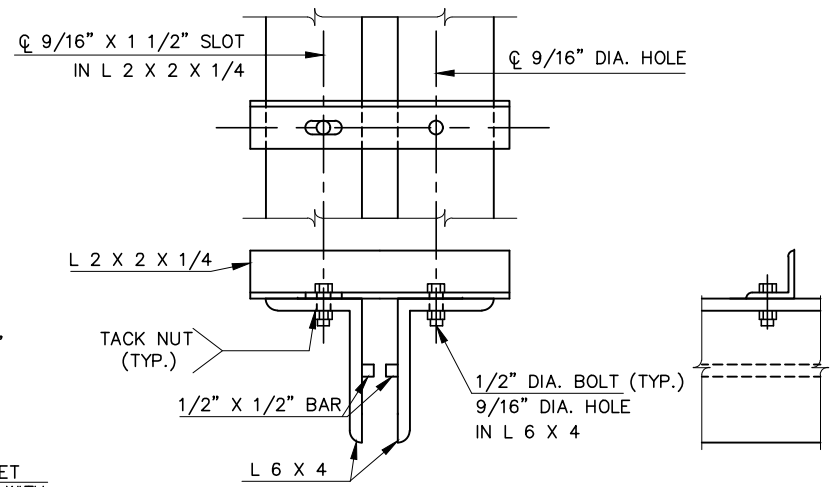


PLAN - SKEWS > 45°

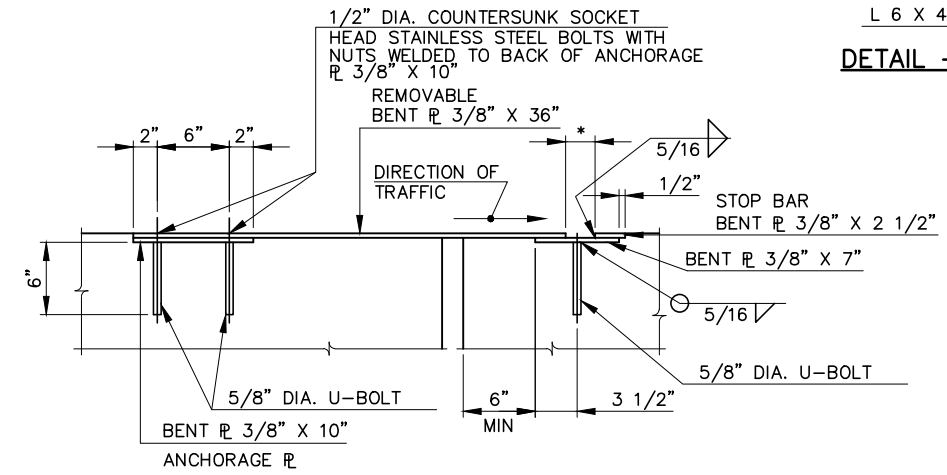


DETAIL - ALIGNMENT BRACKET

TEMPORARY WELD TO BE REMOVED AND GROUND SMOOTH IN FIELD. LOOSEN TEMPORARY JOINT ARMOR AFTER INITIAL SET OF CONCRETE, PREFERABLY NOT LATER THAN TWO HOURS AFTER CONCLUSION OF CONCRETE PLACEMENT.



DETAIL - ALIGNMENT BRACKET



SECTION G-G

* DIMENSION SET EQUAL TO STRIP SEAL JOINT OPENING AT TIME OF INSTALLATION

NOTES:

1. THE SPLIT EXTRUSION SHOWN IS A NORMAL EXTRUSION WHICH HAS BEEN MODIFIED. AT JOINT UPTURNS, ESPECIALLY ON SKEWED BRIDGE DECKS, THE USE OF SPLIT EXTRUSIONS MAY BE NECESSARY TO ENSURE GOOD SEAL INSTALLATION. ON SHOP DRAWINGS, WHERE THE SPLIT EXTRUSION IS NOT USED, THE SEAL MANUFACTURER OR HIS AGENT WARRANTS TO THE CHIEF ENGINEER THAT THE FURNISHED CONFIGURATION WILL PROVIDE FOR READY INSTALLATION AND REPLACEMENT OF THE SEAL.
2. SECTION F-F & G-G - THE BENT STEEL PLATES SHALL BE A-36 STEEL, GALVANIZED IN ACCORDANCE WITH 711.02. SHOP DRAWINGS SHALL BE SUBMITTED PER 501.04. BASIS OF PAYMENT: THE UNIT PRICE SHALL INCLUDE ALL MATERIAL, LABOR, EQUIPMENT AND INCIDENTALS TO FURNISH AND INSTALL THE BENT PLATES. PAYMENT WILL BE MADE AT THE UNIT PRICE BID PER POUND FOR ITEM 513, PARAPET PLATES, AS PER PLAN.

TABLE B

SKEW ANGLE	
<10°	10° - 45°
d	3/4" MIN
x	6 15/16"
h	10"

STRIP SEAL SELECTION TABLE		
SEAL MOVEMENT RATING (SIZE)	MANUFACTURER & DESIGNATION *	
	THE D.S. BROWN COMPANY	WATSON-BOWMAN & ACME CORP.
3"	300L	SE-300
4"	400L	SE-400
5"	500L	SE-500

* OR APPROVED EQUAL