

OHIO TURNPIKE AND
INFRASTRUCTURE COMMISSION

ADDENDUM NO. 2

PROJECT NO. 39-16-02 (PART A)
RIGHT TWO LANES AND SHOULDER RECONSTRUCTION
MILEPOST 186.35 TO MILEPOST 191.39
PORTAGE COUNTY, OHIO

PROJECT NO. 39-16-02 (PART B)
BRIDGE REPAIR & REHABILITATION
OHIO TURNPIKE OVER CUYAHOGA RIVER MILEPOST 191.40
PORTAGE COUNTY, OHIO

OPENING DATE *PREVIOUSLY EXTENDED TO*: 2:00 P.M. (EASTERN), DECEMBER 2, 2015

ALL BIDS MUST BE ELECTRONICALLY SUBMITTED THROUGH BID EXPRESS


ATTENTION OF BIDDERS IS DIRECTED TO:


QUESTIONS AND ANSWERS RECEIVED THROUGH 3:00PM ON NOVEMBER 24, 2015

REVISIONS TO THE CONTRACT DOCUMENTS

Bid Form, SP 617 and Plan Sheet Nos. 6, 13, 188, 189 and 190 of 371

Issued by the Ohio Turnpike and Infrastructure Commission on November 24, 2015. Issuance authorized by Anthony D. Yacobucci, Chief Engineer, and Mark R. Musson, Director of Contract Administration.


Anthony D. Yacobucci 11/24/15
Date


Mark R. Musson 11/24/15
Date

OHIO TURNPIKE AND INFRASTRUCTURE COMMISSION
ADDENDUM NO. 2
PROJECT NO. 39-16-02 (PART A & PART B)

QUESTIONS AND ANSWERS THROUGH 12PM ON NOVEMBER 24, 2015:

Q#7 Pavement for Maintaining Traffic Class A APP details on pg. 54 of 371 seem to indicate that the resurfacing of MOT crossovers is to be done at initial set up and at project completion, the quantity associated with this item (4,050 SY) will only cover these areas once. Previous projects have had a separate pay item to resurfacing the MOT crossovers at project completion. Will this quantity need to be adjusted to reflect this or will other pay items be added to address the resurfacing?

A#7 The quantity given is the area of both crossovers. Based on the area specified, the Contractor is required to determine the volume of asphalt required to provide the specified crossovers. The Maintenance of Traffic Note for Item 615 – Pavement for Maintaining Traffic, Class A, As Per Plan, located on Plan Sheet 24 of 371, states all costs for placement of the MOT crossovers, restoring the MOT crossover area to its original condition, installing and removing the drainage system shall be included in the cost of this pay item.

Q#8 Ref.#119 Granular Material notes on pg. 16 of 371 indicate the unit of measure is TON, bid form has CY, which is correct? Additionally this quantity seems excessive based on plan notes, please verify.

A#8 See the response to Q#4 of Addendum #1.

Q#9 Ref.#225 existing crossover closed/re-opened is being bid as a Lump Sum. Previous projects always bid this item on an "Each" basis, please indicate how many locations there are and how many times you anticipate having to open or close them if the bid item is to be a Lump Sum.

A#9 There are three (3) existing crossovers in the Project that must be closed twice and re-opened twice for a total of six (6) closing/reopenings

Q#10 Ref.#133 Pressure Relief Joint Type A, plan notes indicate that this item will only be used if the Concrete alternate is accepted, please move to the concrete alternate items since it is exclusive of that alternate.

A#10 With this Addendum No. 2, the Pressure Relief Joint Type A Quantity has been moved from the Total Base Bid section to the Concrete Alternate section on the Bid Form and the General Summaries.

Q#11 Can you please clarify what material(s) are acceptable for Item 111? There has been a recent change to the ODOT specification for cure coat and the bid documents do not clearly state which material is acceptable.

A#11 The Plan Note quantities are based on using a liquid membrane-forming curing compound meeting the requirements of ODOT 705 07. This is the type of curing that is required for the Project.

Q#12 Would the turnpike allow a contractor to put a portable concrete plant or portable asphalt plant on turnpike property to serve this Project? Possible proposed locations include the State Route 8 interchange, the IR-480 interchange, or the State Route 44 interchange. Please advise if this would be acceptable and what stipulations (if any) would apply to this scenario.

A#12 Toll Plaza (TP) 180 will not be considered for any portable asphalt or concrete plants ("Plants"). The Commission will authorize the use of the interchange infield areas at TP 187 and TP 193 for Plants, subject to the following obligations of the Contractor incorporated into the Contract Documents through this Addendum No. 2:

1. Plant installation and operation shall conform with all local, state, federal and regulatory ordinances, statutes, rules or other requirements, including all local noise ordinances. The Contractor shall acquire any required permits, approvals or authorizations from those entities with jurisdiction over the operation and location. The Contractor shall bear the entire the risk that any regulatory authority prohibits or stops the use of the Plants on the Commission's property.
2. Perform pre-survey and post-survey documenting the existing and remaining conditions of the entire Toll Plaza interchange infield areas affected by the grading. The surveys shall provide one (1) foot contours detailing any swales or drainage facilities. The surveys shall be stamped by a Professional Surveyor licensed in the State of Ohio.
3. Prepare modified SWPPP Design and implement the modified SWPPP in accordance with the Contract Documents. Provide any OEPA permit modifications.
4. Prepare and provide a scaled set of drawings of the interchange and all details required to perform the proposed work. The general plan shall show all the work to be completed with this modification. At a minimum, the existing topographic drawings shall be shown with the existing and proposed grading, drainage, utilities and lighting. Details of all drainage and lighting shall be provided with all the info that is required to build the proposed work.
5. The infield areas will require grading and drainage work to create a work area. The existing drainage system with the proposed modifications shall be designed in accordance with the most current addition of the ODOT Location and Design Manual, Volume Two, Drainage Design. Both the existing system and proposed system shall be hydraulically analyzed. The Drainage Design and Plans shall be prepared and stamped by a Professional Engineer licensed in the State of Ohio. The drainage design and the set of drawings shall be submitted to the Commission for approval prior to implementing any drainage work.
6. Additional Drainage, as needed to maintain existing drainage ditches and conduits:
 - a. The Drainage shall be installed in accordance with the current edition of the OTIC and/or ODOT Standard Drawings.
 - b. The piping material shall be either Type B, 706 02 or Type B, 707 33.
7. Existing trees will need to be felled before April 1, 2015 due to the Indiana Fruit Bat Restrictions between April 1 and September 30.
8. Compliance with any ODOT and or local agency permit requirements for accessing the local roads is required.

9. *The Contractor shall comply with all Ohio Environmental Protection Agency and any additional agency permits, authorizations or conditions required for the setup, operation and removal of Plants.*
10. *The Contractor's operations shall in no way interfere with Turnpike operations or Traffic flow in the Toll Plazas. The Contractor shall provide all Maintenance of Traffic Controls in accordance with SP 614 and OTIC Standard Drawings. At all access points, a Flagger shall be stationed to control ingress/egress of construction vehicles.*
11. *MOT for local roads - MOT for State and/ or local roads shall be provided in accordance with the OMUTCD and local regulations.*
12. *Lighting shall be provided at each ingress and egress location for all night operations.*
13. *No waste material is to be stored at the Plant location. Any waste material as a result of production is to be removed and disposed of in accordance with SP 105.*
14. *Grading/Guardrail/Seeding:*
 - a. *The Contractor shall remove and stockpile topsoil for reuse at the completion of the batch plant use. All disturbed areas shall be restored by placing eight (8) inches of stockpiled topsoil and graded to provide positive drainage.*
 - b. *All disturbed Ramp shoulders shall be restored in accordance with the mainline shoulder typical sections*
 - c. *The Commission reserves the right to modify final grading and elevations as work progresses at no additional cost to the Commission.*
 - d. *Contractor-proposed modifications to existing guardrail shall be submitted to the Commission for approval prior to any modifications. Contractor shall provide an existing condition plan and a proposed modified plan and a final permanent plan. All guardrail modifications shall be in accordance with OTIC standards and approved by the Chief Engineer.*
 - e. *All disturbed areas shall be seeded and mulched after completion of the work in accordance with ODOT CMS 659, as approved by the Chief Engineer.*
15. *Additional Items:*
 - a. *For safety reasons, Ramp Traffic volume may restrict or dictate when off-road trucks or construction vehicles may cross Ramp.*
 - b. *All access points shall be closed with Barrels and Type 3 barricades when not in use.*
 - c. *Ramp Access Points are to have Standard Construction Entrances constructed in accordance with SWPPP requirements. The adjacent ramp pavement shall be kept free from mud and debris.*
 - d. *Early Warning advisory signage may need to be placed and active when dump site is in use to advise traffic that construction vehicles are crossing, entering and/or exiting.*
16. *Provide As-built Drawings following restoration of the disturbed areas in AutoCAD, Version 2011 or newer.*
17. *If the Contractor elects to pursue the use of the Commission's property for the Plants in accordance with these preceding conditions, the cost of all items listed above and any other costs incurred by the Contractor due to this Work shall be reflected as incidental to the unit prices bid on the Contract items*

MODIFICATIONS TO THE CONTRACT DOCUMENTS

Changes are made to the Contract Documents for Contract No 39-16-02 (PART A & PART B) as follows with deletions are depicted using ~~strikethrough~~ text and Changes/Additions are signified using ***bold italicized*** text:

Modifications to Bid Form Schedule of Items:

The Bid Form is modified to delete "Ref. No. 133, Item No Special, Pressure Relief Joint, Type A, As Per Plan," from the Base Bid and insert the item under "***Ref. No. 265A, Item No. Special, Pressure Relief Joint, Type A, As Per Plan,***" in the 39-16-02A Concrete Alternate.

The Bid Form is modified to correct the estimated quantity provided at Ref. No. 130 for Item SP 614, Compacted Aggregate, from ~~620 CU YD~~ to ***1240 CU YD***.

Modifications to Specifications:

The Special Provisions at SP 617 at A Aggregate are modified to correct the amendment to Section 617.02 to specify the requirement to ***conform to SP 304*** rather than ~~Crushed Carbonate Stone only conforming to Section 703.18~~.

Modifications to Plan Sheets:

Plan Sheet No. 6 of 371 is modified to correct the Item Legend, Reference 12, Item SP 617 Compacted Aggregate, from "~~T=3~~" to "***T=6*** (without guardrail)"

Plan Sheet No. 13 of 371 is modified to delete the Note at Item 617 – Shoulder Preparation, As Per Plan and replaced in its entirety.

Plan Sheet No. 188 of 371 is modified to correct the quantity reference to Plan Sheet No. 190 and the Grand Total quantity of Item SP617 from ~~620 CU YD~~ to ***1240 CU YD***, and delete the reference to ~~Plan Sheet No. 13 and Item Special, 222 FT, Pressure Relief Joint, Type A, As Per Plan.~~

Plan Sheet No. 189 of 371 is modified to correct the quantity reference to ***Plan Sheet 13 and Item Special, 222 FT, Pressure Relief Joint, Type A, As Per Plan.***

Plan Sheet No. 190 of 371 is modified to correct the Berm Treatment Subsummary quantity for SP617 from ~~620 CU YD~~ to ***1240 CU YD***

Addendum No. 2 to Contract 39-16-02 (PART A & PART B):

(Firm Name)

(Signature)

(Printed Name)

(Date)

SPECIAL PROVISIONS

SP 617

RECONDITIONING SHOULDERS

(09-30-11-19-2015)

Section 617.02 of the Specifications is amended as follows:

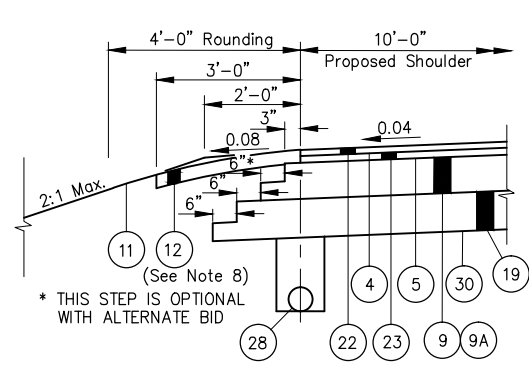
A. Aggregate

Aggregate furnished under this item shall **conform to SP 304** ~~be Crushed Carbonate Stone only conforming to Section 703.18~~ of the Specifications

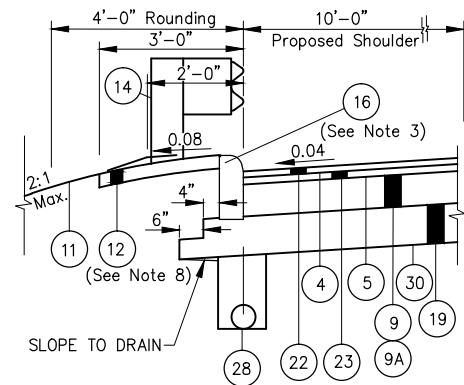
B. Basis of Payment

Payment shall be made under:

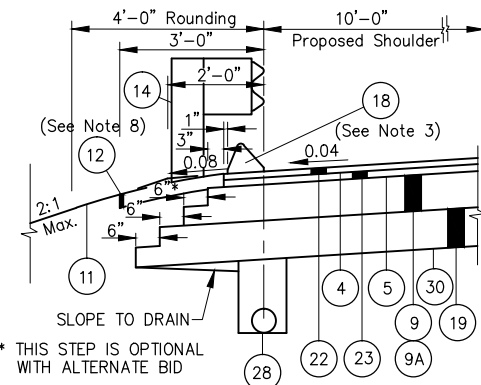
<u>Item</u>	<u>Unit</u>	<u>Description</u>
SP 617	Cu. Yd	Compacted Aggregate



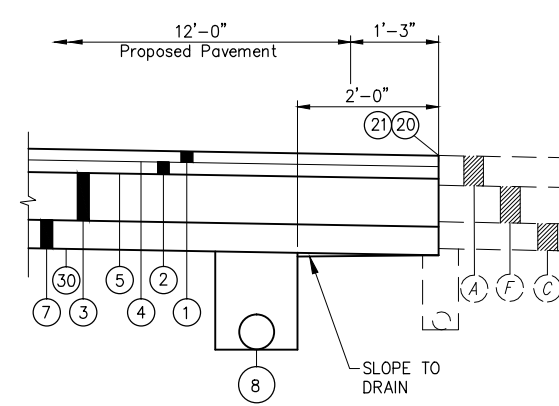
SHOULDER DETAIL
NOT TO SCALE



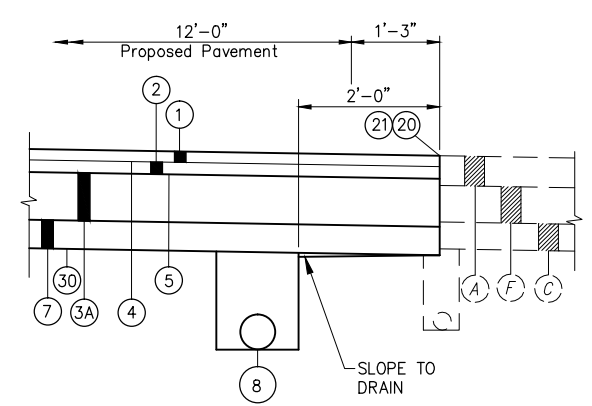
CONCRETE CURB SHOULDER DETAIL
NOT TO SCALE



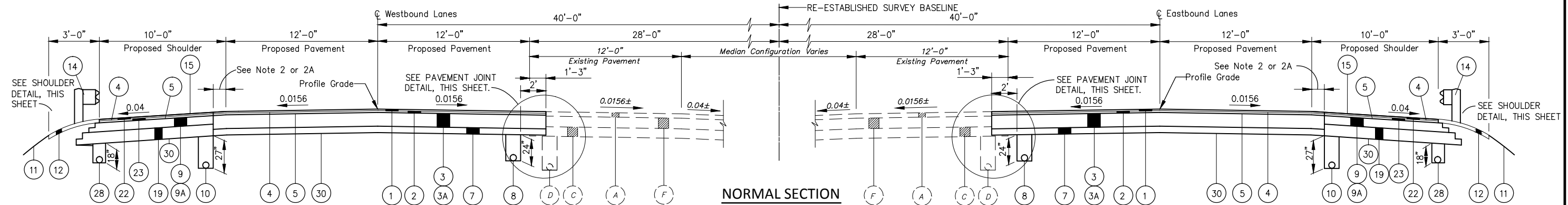
ASPHALT CURB SHOULDER DETAIL
NOT TO SCALE



PAVEMENT JOINT DETAIL
ASPHALT ALTERNATE (ASPHALT CONCRETE BASE), NOT TO SCALE



PAVEMENT JOINT DETAIL
CONCRETE ALTERNATE (CONCRETE BASE), NOT TO SCALE



NORMAL SECTION

WESTBOUND AND EASTBOUND

STA. 33+80.00 TO STA. 64+55.71 =	3075.71 L.F.
STA. 92+22.20 TO STA. 106+18.83 BACK =	1396.63 L.F.
STA. 106+00.00 AHEAD TO STA. 122+74.50 =	1674.50 L.F.
STA. 149+60.91 TO STA. 173+01.90 =	2340.99 L.F.
STA. 192+49.83 TO STA. 219+15.19 =	2665.36 L.F.
STA. 242+63.81 TO STA. 290+99.12 BACK =	4835.31 L.F.
STA. 291+20.00 AHEAD TO STA. 299+90.35 =	870.35 L.F.

ITEM LEGEND

- | | |
|--|--|
| ① ITEM SP 404 ASPHALT CONCRETE SURFACE COURSE, USING CRUSHED SLAG, PG 70-22 (FR), (1-1/2") | ①7 ITEM 622 CONCRETE BARRIER, TYPE C |
| ② ITEM SP 402 ASPHALT CONCRETE BASE COURSE OR RECYCLED ASPHALT CONCRETE BASE COURSE, PG 70-22 (FR), (1-3/4") | ①8 ITEM 609 ASPHALT CONCRETE CURB, TYPE 1, PG 64-22 |
| ③ ITEM SP 302 ASPHALT CONCRETE BASE, PG 64-22, (11") (ASPHALT ALTERNATE) (2 EQUAL LIFTS) (SEE NOTES 1 & 6) | ①9 ITEM SP 304 AGGREGATE BASE (SHOULDER) (ASPHALT ALTERNATE T=9") (CONCRETE ALTERNATE T=9") |
| ③A ITEM 305 CONCRETE BASE, (12") (CONCRETE ALTERNATE, SEE NOTE 1A) | ②0 ITEM SP 404A JOINT SEALER (APPLIED TO VERTICAL FACE, EACH LIFT) |
| ④ ITEM SPECIAL TRACKLESS TACK FOR INTERMEDIATE COURSE (APPLIED @ 0.06 GAL./S.Y.), SEE SHEET 12. | ②1 ITEM 252 FULL DEPTH PAVEMENT SAWING |
| ⑤ ITEM SPECIAL TRACKLESS TACK (APPLIED @ 0.075 GAL./S.Y.), SEE SHEET 12. | ②2 ITEM SP 404 ASPHALT CONCRETE SURFACE COURSE, USING CRUSHED STONE, PG 64-22, (1-1/2") |
| ⑥ ITEM 622 MEDIAN WALL, AS PER PLAN | ②3 ITEM SP 402 ASPHALT CONCRETE BASE COURSE OR RECYCLED ASPHALT CONCRETE BASE COURSE, PG 64-22, (1-3/4") |
| ⑦ ITEM SP 304 6" AGGREGATE BASE | ②4 ITEM SP 536 CONCRETE WEATHERPROOFING, BARRIERS AND PARAPETS, SEE SHEET 15. |
| ⑧ ITEM SP 605 6" SHALLOW PIPE UNDERDRAIN, WITH FABRIC WRAP (24") | ②5 ITEM 622 CONCRETE BARRIER, SINGLE SLOPE, TYPE D, (42"), AS PER PLAN |
| ⑨ ITEM SP 302 ASPHALT CONCRETE BASE, PG 64-22 (T=8") (ASPHALT ALTERNATE) (SHOULDER) (SEE NOTES 1 & 6) | ②6 ITEM SP 304 AGGREGATE BASE, (12") |
| ⑨A ITEM SPECIAL ROLLER COMPACTED CONCRETE (SHOULDER T=9") (CONCRETE ALTERNATE) (SEE NOTE 1A) | ②7 ITEM 204 SUBGRADE COMPACTION |
| ⑩ ITEM SP 605 6" SHALLOW PIPE UNDERDRAIN, WITH FABRIC WRAP (27") | ②8 ITEM SP 605 6" BASE PIPE UNDERDRAIN, WITH FABRIC WRAP (18") |
| ⑪ ITEM 659 SEEDING AND MULCHING | ②9 ITEM 254 PAVEMENT PLANING, ASPHALT CONCRETE (2"±) |
| ⑫ ITEM SP 617 COMPACTED AGGREGATE, (T=6") (WITHOUT GUARDRAIL) | ③0 ITEM 206 CHEMICALLY STABILIZED SUBGRADE, AS PER PLAN, SEE SHEET 16. |
| ⑫ ITEM SP 627 STONE SHOULDER PROTECTION, (T=3"), (WITH GUARDRAIL) | ③1 ITEM SP 403 ASPHALT CONCRETE LEVELING COURSE, PG 70-22, (1/2") |
| ⑬ ITEM SP 526 CLASS C CONCRETE, APPROACH SLAB, USING TYPE I CEMENT (T=12") | ③2 ITEM SP 404 ASPHALT CONCRETE SURFACE COURSE, USING CRUSHED STONE, PG 64-22, (2") |
| ⑭ ITEM 606 GUARDRAIL, TYPE MGS, USING LONG STEEL POSTS | ③3 ITEM 254 PAVEMENT PLANING, ASPHALT CONCRETE (VARIABLE DEPTH) |
| ⑮ ITEM SPECIAL SONIC NAP ALERT PATTERN (SNAP) | ③4 ITEM 609 CURB, TYPE 4-A |
| ⑯ ITEM 609 CURB, TYPE 4-C | ③5 ITEM SP 605 AGGREGATE DRAIN, TYPE II |

EX. ITEM LEGEND

- (A) ASPHALT CONCRETE (T=5"±)
- (B) CONCRETE PAVEMENT (T=10"±)
- (C) AGGREGATE BASE (T=6"±)
- (D) 6" UNDERDRAIN
- (E) REINFORCED CONCRETE APPROACH SLAB (T=10"±)
- (F) BITUMINOUS AGGREGATE BASE (T=10"±)
- (G) GUARDRAIL, TYPE 5
- (H) CONCRETE BARRIER
- (K) ASPHALT CONCRETE (T=9"±)
- (L) AGGREGATE BASE (T=10 1/2"± AVERAGE)

COMMON AND ASPHALT ALTERNATE NOTES

- NOTE 1: THE ASPHALT ALTERNATE PAVEMENT SECTION FOR THIS PROJECT SHALL BE AS FOLLOWS;
MAINLINE PAVEMENT: FULL DEPTH ASPHALT PAVEMENT SECTION
SHOULDER PAVEMENT: FULL DEPTH ASPHALT PAVEMENT SECTION
- NOTE 2: THE TRAVELED LANE PAVEMENT COMPOSITION WILL EXTEND 1 FOOT INTO THE SHOULDER.
- NOTE 3: ASPHALT/CONCRETE CURB SHALL BE SEALED PER THE REQUIREMENTS OF SP 400.
- NOTE 4: ALL EXPOSED SUBGRADE WILL HAVE SUBGRADE STABILIZATION PERFORMED USING ITEM 206 - CHEMICALLY STABILIZED SUBGRADE, AS PER PLAN. SEE GENERAL NOTES SHEET 16.
- NOTE 5: FOR PAVEMENT AND SHOULDER WIDTHS AND CROSS SLOPES, SEE PAVEMENT ELEVATION DETAILS ON SHEETS 294 - 302.
- NOTE 6: ITEM SPECIAL - TRACKLESS TACK (APPLIED AT 0.06 GAL./S.Y.) SHALL BE PLACED ON EACH LIFT OF ITEM SP 302.
- NOTE 7: FOR ADDITIONAL PAVEMENT JOINT DETAIL NOTES, SEE THE TYPICAL SECTION ON SHEET 322.
- NOTE 8: THE MATERIAL REMOVED FOR CONSTRUCTION OF THE PAVEMENT SECTION SHALL BE PAID FOR AS EXCAVATION AND EMBANKMENT IN ACCORDANCE WITH ODOT 204. ANY ADDITIONAL MATERIAL REMOVED BY THE CONTRACTOR OUTSIDE THE PAVEMENT SECTION SHALL BE REPLACED IN ACCORDANCE WITH 204 EMBANKMENT AT THE CONTRACTOR'S EXPENSE.

CONCRETE ALTERNATE NOTES

- NOTE 1A: THE CONCRETE ALTERNATE PAVEMENT SECTION FOR THIS PROJECT SHALL BE AS FOLLOWS;
MAINLINE PAVEMENT: CONCRETE BASE PAVEMENT WITH AN ASPHALT OVERLAY
SHOULDER PAVEMENT: ROLLER COMPACTED CONCRETE WITH AN ASPHALT OVERLAY
- NOTE 2A: THE TRAVELED LANE PAVEMENT COMPOSITION WILL EXTEND 2 FEET INTO THE SHOULDER.

1	ADDENDUM NO. 2	CLH	1/19/15
NO.	REVISIONS	BY	DATE
OHIO TURNPIKE AND INFRASTRUCTURE COMMISSION			
TYPICAL SECTIONS			
M.P. 186.3		PORTAGE COUNTY	
GPD GROUP			
<small>Glass, Pyle, Schwan, Burns & DeHaven, Inc. 330-572-2100 520 South Main Street, Suite 2531, Akron, Ohio 44311 Fax 330-572-2101</small>			
DESIGNED:	CLH	CHECKED:	PJF
DATE:	9/18/15	IN CHARGE:	MRG
DRAWN:	CLH	SCALE:	N.T.S.
PROJECT NO. 39-16-02A SHEET 6 OF 371			

GUARDRAIL BEHIND CURBS

WHERE A CURB IS PROVIDED AT THE OUTER EDGE OF THE PAVED SHOULDER, ANY NECESSARY GUARDRAIL SHALL BE POSITIONED SO THAT THE FACE OF THE GUARDRAIL IS LOCATED FLUSH WITH THE FACE OF CURB AND THE TOP OF THE RAIL SHALL BE 31" ABOVE THE GUTTER LINE.

GUARDRAIL REPLACEMENT

NO HAZARD SHALL BE LEFT UNPROTECTED EXCEPT FOR THE ACTUAL TIME NECESSARY TO REMOVE THE EXISTING GUARDRAIL, PREPARE THE SITE, AND INSTALL NEW GUARDRAIL IN A CONTINUOUS OPERATION. THE REMOVAL OF ALL GUARDRAIL SHALL AT ALL TIMES BE AS DIRECTED BY THE CHIEF ENGINEER. NO GUARDRAIL SHALL BE REMOVED UNTIL THE REPLACEMENT MATERIAL IS ON THE SITE, READY FOR INSTALLATION. FAILURE TO COMPLY WITH THIS REQUIREMENT SHALL BE DEEMED SUFFICIENT CAUSE TO ORDER WORK SUSPENDED UNTIL SUCH TIME AS THE CHIEF ENGINEER IS ASSURED OF COMPLIANCE.

CONNECTION BETWEEN EXISTING AND PROPOSED GUARDRAIL

WHEN IT IS NECESSARY TO SPLICE PROPOSED GUARDRAIL TO EXISTING GUARDRAIL, ONLY THE EXISTING GUARDRAIL SHALL BE CUT, DRILLED, OR PUNCHED. THE CONNECTION SHALL BE MADE USING A "W-BEAM RAIL SPLICE" AS SHOWN ON ODOT STANDARD CONSTRUCTION DRAWING MGS-1.1. THE TRANSITION IN HEIGHT WILL OCCUR IN THE LAST TWENTY FIVE (25) FEET OF EXISTING GUARDRAIL. PAYMENT SHALL BE INCLUDED IN THE CONTRACT PRICE FOR THE RESPECTIVE GUARDRAIL ITEMS.

ITEM 201 - CLEARING AND GRUBBING

ALL TREES, BRUSH AND STUMPS SHALL BE REMOVED WITHIN THE CONSTRUCTION LIMITS AS SHOWN IN THE CONSTRUCTION PLANS AND/OR ALL AREAS WITHIN THIRTY FEET OF THE EDGE OF SHOULDER AND ALONG BRIDGES. ALSO INCLUDED ARE ALL ASH TREES WITHIN R/W FENCE AT THE INTERCHANGE AREA. THIS WORK SHALL BE COMPLETED UNDER THE LUMP SUM BID FOR ITEM 201, CLEARING AND GRUBBING; EXCEPT THOSE OTHERWISE DESIGNATED BY THE CHIEF ENGINEER SHALL NOT TO BE REMOVED. LANDOWNERS SHALL BE ALLOWED TO SALVAGE THE WOOD FROM TREES BEING REMOVED ON THEIR PROPERTY. TREES DESIGNATED AS BEING SALVAGED FOR WOOD, SHALL BE CUT ABOVE THE BASE AND PLACED OUTSIDE OF THE RIGHT-OF-WAY.

THE FOLLOWING QUANTITIES ARE PROVIDED AS A CONTINGENCY FOR ANY TREES 12" OR LARGER THAT MAY BE INCLUDED WITH THE LIMITS DESCRIBED ABOVE THAT WILL BE REMOVED AS DIRECTED BY THE CHIEF ENGINEER.

- ITEM 201 - TREE REMOVED, 18" 10 EACH
- ITEM 201 - TREE REMOVED, 18" ASH 10 EACH
- ITEM 201 - TREE REMOVED, 30" 10 EACH
- ITEM 201 - TREE REMOVED, 36" 10 EACH

PAYMENT FOR THE REMOVAL OF TREES SHALL BE INCLUDED IN THE UNIT PRICE BID FOR ITEM 201 - TREE REMOVED, ---, EACH. ALL STUMPS OUTSIDE OF THE CLEARING AND GRUBBING LIMITS MAY BE LEFT IN PLACE, FLUSH WITH THE ADJACENT GROUND AND TREATED/SPRAYED WITH A GARLON HERBICIDE MIXED WITH BASE OIL. ALL STUMPS LEFT IN PLACE SHALL BE SPRAYED WITH THE HERBICIDE MIXTURE.

ITEM SP 536 - CONCRETE WEATHERPROOFING, BARRIERS AND PARAPETS

ALL NEW AND EXPOSED CONCRETE BARRIER SURFACES SHALL RECEIVE A COATING PER SP 536. THE CONCRETE WEATHERPROOFING COATING SHALL ALSO BE USED AS THE CURE COAT. THE FINAL APPEARANCE SHALL BE UNIFORM AND CONSISTENT AND SHALL CONFORM TO ALL PROVISIONS IN SP 536. NO ADDITIONAL PAYMENT SHALL BE MADE IF THE CONTRACTOR IS REQUIRED TO APPLY ADDITIONAL COATINGS TO ACHIEVE A UNIFORM APPEARANCE. THE MATERIAL SHALL BE APPLIED PER THE MANUFACTURER'S RECOMMENDATIONS. ALL LABOR, EQUIPMENT, AND MATERIALS NECESSARY TO COMPLETE THIS WORK SHALL BE INCLUDED IN THE BID PRICE PER SQUARE YARD FOR SP 536 - CONCRETE WEATHERPROOFING, BARRIERS AND PARAPETS.

ITEM 606 - BRIDGE TERMINAL ASSEMBLY, TYPE 1, USING LONG STEEL POSTS, AS PER PLAN

INSTALLATION SHALL BE AT THE LOCATIONS SPECIFIED IN THE PLANS AS AN ATTACHMENT TO AN EXISTING CONCRETE BARRIER TO REMAIN. THE EXISTING HOLES FOR THE ATTACHMENT BOLTS IN THE BARRIER TRANSITION SECTION WILL BE FILLED WITH NON-SHRINK GROUT. NEW HOLES WILL THEN BE DRILLED AT LOCATIONS SHOWN ON ODOT STANDARD DRAWING MGS-3.1.

PAYMENT FOR THE ABOVE WORK SHALL BE MADE AT THE UNIT PRICE BID PER EACH FOR ITEM 606, BRIDGE TERMINAL ASSEMBLY, TYPE 1, USING LONG STEEL POSTS, AS PER PLAN, EACH, AND SHALL INCLUDE ALL LABOR, TOOLS, EQUIPMENT AND MATERIALS NECESSARY TO CONSTRUCT A COMPLETE AND FUNCTIONAL BRIDGE TERMINAL ASSEMBLY SYSTEM.

ITEM 606 - BRIDGE TERMINAL ASSEMBLY, TYPE 2, USING LONG STEEL POSTS, AS PER PLAN

INSTALLATION SHALL BE AT THE LOCATIONS SPECIFIED IN THE PLANS AS AN ATTACHMENT TO AN EXISTING CONCRETE BARRIER TO REMAIN. THE EXISTING HOLES FOR THE ATTACHMENT BOLTS IN THE BARRIER TRANSITION SECTION WILL BE FILLED WITH NON-SHRINK GROUT. NEW HOLES WILL THEN BE DRILLED AT LOCATIONS SHOWN ON ODOT STANDARD DRAWING MGS-3.2.

PAYMENT FOR THE ABOVE WORK SHALL BE MADE AT THE UNIT PRICE BID PER EACH FOR ITEM 606, BRIDGE TERMINAL ASSEMBLY, TYPE 2, AS PER PLAN, EACH, AND SHALL INCLUDE ALL LABOR, TOOLS, EQUIPMENT AND MATERIALS NECESSARY TO CONSTRUCT A COMPLETE AND FUNCTIONAL BRIDGE TERMINAL ASSEMBLY SYSTEM.

COATED DOWEL BARS

DOWEL BARS REQUIRED ON ODOT STANDARD DRAWING BP-2.2 SHALL BE COATED IN ACCORDANCE WITH 709.13.

ITEM 622 - CONCRETE BARRIER, TYPE B-50, AS PER PLAN

ITEM 622 - CONCRETE BARRIER, TYPE B-50 AS PER PLAN SHALL HAVE A NEW JERSEY STYLE FACE AND SHALL BE CONSTRUCTED IN ACCORDANCE WITH OTIC STANDARD DRAWING CBR-3 AND SECTION 622 OF THE SPECIFICATIONS.

IN LIEU OF THE CURING COMPOUNDS SPECIFIED IN SECTION 622.07 OF THE SPECIFICATIONS, THE CONCRETE BARRIER SHALL BE CURED USING THE MATERIAL SPECIFIED IN SP 536. THE SP 536 MATERIAL APPLICATION SHALL BE AS PER THE RECOMMENDATIONS OF THE MANUFACTURER. THE CONTRACTOR SHALL SUBMIT TECHNICAL DATA FOR THE SP 536 MATERIAL TO THE ENGINEER FOR APPROVAL. THE COST OF CURING THE WALL AND BARRIER SHALL BE INCLUDED IN THE BID PRICE FOR SP 536 MASONRY COATING. ALL OTHER PROVISIONS OF SECTION 622 OF THE SPECIFICATIONS SHALL APPLY.

THE COST OF THE SP625-CONDUIT WITH MULTI-CELL INTERDUCT AND SP625A-JUNCTION BOX, POLYMER CONCRETE, 18"x8"x8" SHALL BE INCIDENTAL TO ITEM 622 - CONCRETE BARRIER, TYPE B-50, AS PER PLAN. LOCATIONS OF THE SP625A-JUNCTION BOXES WILL BE AS DIRECTED BY THE CHIEF ENGINEER. PAYMENT FOR ALL MATERIALS AND LABOR SHALL BE INCLUDED IN THE UNIT PRICE BID PER FOOT FOR ITEM 622 - CONCRETE BARRIER, TYPE B-50, AS PER PLAN.

ITEM 622 - CONCRETE BARRIER, SINGLE SLOPE, TYPE D, (42"), AS PER PLAN

ITEM 622 - CONCRETE BARRIER, SINGLE SLOPE, TYPE D, (42"), AS PER PLAN SHALL BE CONSTRUCTED IN ACCORDANCE WITH ODOT STANDARD DRAWINGS RM-4.5 AND RM-4.6, OTIC STANDARD DRAWINGS CBR-2, CBR-3, CBR-5 AND CBR-6 AND SECTION 622 OF THE SPECIFICATIONS.

THE CONCRETE FOUNDATION AND AGGREGATE BASE FOR THIS BARRIER WILL BE CONSTRUCTED AS SHOWN IN OTIC STANDARD DRAWING CBR-2.

IN LIEU OF THE CURING COMPOUNDS SPECIFIED IN SECTION 622.07 OF THE SPECIFICATIONS, THE CONCRETE BARRIER SHALL BE CURED USING THE MATERIAL SPECIFIED IN SP 536. THE SP 536 MATERIAL APPLICATION SHALL BE AS PER THE RECOMMENDATIONS OF THE MANUFACTURER. THE CONTRACTOR SHALL SUBMIT TECHNICAL DATA FOR THE SP 536 MATERIAL TO THE ENGINEER FOR APPROVAL. THE COST OF CURING THE WALL AND BARRIER SHALL BE INCLUDED IN THE BID PRICE FOR SP 536 - MASONRY COATING. ALL OTHER PROVISIONS OF SECTION 622 OF THE SPECIFICATIONS SHALL APPLY.

NO HAZARD SHALL BE LEFT UNPROTECTED EXCEPT FOR THE ACTUAL TIME NECESSARY TO REMOVE EXISTING GUARDRAIL, EXCAVATE FOR AND INSTALL THE BARRIER, CURE THE BARRIER FOR 3 DAYS, PRIOR TO SEALING OF CONCRETE SURFACES, AND RECONNECT THE EXISTING OR REBUILT GUARDRAIL. THE REMOVAL OF GUARDRAIL SHALL AT ALL TIMES BE AS DIRECTED BY THE CHIEF ENGINEER. NO GUARDRAIL SHALL BE REMOVED UNTIL THE REPLACEMENT MATERIAL IS READY FOR INSTALLATION. FAILURE TO COMPLY WITH THIS REQUIREMENT SHALL BE DEEMED SUFFICIENT CAUSE TO ORDER WORK SUSPENDED ON THIS PROJECT UNTIL SUCH TIME THE CHIEF ENGINEER IS ASSURED OF SAID COMPLIANCE.

THE COST OF THE CONCRETE FOUNDATION, AGGREGATE BASE, DEFORMED STEEL BARS, JOINT, END ANCHORAGE AND THE BARRIER TRANSITION SHALL BE INCIDENTAL TO ITEM 622 - CONCRETE BARRIER, SINGLE SLOPE, TYPE D, (42"), AS PER PLAN. THE BARRIER TRANSITION SHALL BE CONSTRUCTED IN ACCORDANCE WITH ODOT STANDARD DRAWING RM-4.6. THE END ANCHORAGE SHALL BE CONSTRUCTED IN ACCORDANCE WITH ODOT STANDARD DRAWING RM-4.5. PAYMENT FOR ALL MATERIALS, LABOR, EQUIPMENT AND INCIDENTALS TO COMPLETE THE WORK SHALL BE INCLUDED IN THE UNIT PRICE BID PER FOOT FOR ITEM 622 - CONCRETE BARRIER, SINGLE SLOPE, TYPE D, (42"), AS PER PLAN.

ITEM 622 - MEDIAN WALL, AS PER PLAN

ITEM 622 - MEDIAN WALL, AS PER PLAN SHALL BE CONSTRUCTED IN ACCORDANCE WITH ODOT STANDARD DRAWING RM-4.5, OTIC STANDARD DRAWINGS CBM-3 AND CBM-5 AND SECTION 622 OF THE SPECIFICATIONS. CONSTRUCT WALL WITH A SINGLE SLOPE FACE AT A BARRIER HEIGHT OF 42" TO MATCH SHAPE OF TYPE D AND TYPE C BARRIERS AT EACH END.

IN LIEU OF THE CURING COMPOUNDS SPECIFIED IN SECTION 622.07 OF THE SPECIFICATIONS, THE CONCRETE BARRIER SHALL BE CURED USING THE MATERIAL SPECIFIED IN SP 536. THE SP 536 MATERIAL APPLICATION SHALL BE AS PER THE RECOMMENDATIONS OF THE MANUFACTURER. THE CONTRACTOR SHALL SUBMIT TECHNICAL DATA FOR THE SP 536 MATERIAL TO THE ENGINEER FOR APPROVAL. THE COST OF CURING THE WALL AND BARRIER SHALL BE INCLUDED IN THE BID PRICE FOR SP 536 - MASONRY COATING. ALL OTHER PROVISIONS OF SECTION 622 OF THE SPECIFICATIONS SHALL APPLY.

NO HAZARD SHALL BE LEFT UNPROTECTED EXCEPT FOR THE ACTUAL TIME NECESSARY TO REMOVE EXISTING GUARDRAIL, EXCAVATE FOR AND INSTALL THE BARRIER, CURE THE BARRIER FOR 3 DAYS, PRIOR TO SEALING OF CONCRETE SURFACES, AND RECONNECT THE EXISTING OR REBUILT GUARDRAIL. THE REMOVAL OF GUARDRAIL SHALL AT ALL TIMES BE AS DIRECTED BY THE CHIEF ENGINEER. NO GUARDRAIL SHALL BE REMOVED UNTIL THE REPLACEMENT MATERIAL IS READY FOR INSTALLATION. FAILURE TO COMPLY WITH THIS REQUIREMENT SHALL BE DEEMED SUFFICIENT CAUSE TO ORDER WORK SUSPENDED ON THIS PROJECT UNTIL SUCH TIME THE CHIEF ENGINEER IS ASSURED OF SAID COMPLIANCE.

THE COST OF THE CONCRETE FOUNDATION, AGGREGATE BASE, DEFORMED STEEL BARS, JOINT AND THE BARRIER TRANSITION SHALL BE INCIDENTAL TO ITEM 622 - MEDIAN WALL, AS PER PLAN. PAYMENT FOR ALL MATERIALS, LABOR, EQUIPMENT AND INCIDENTALS TO COMPLETE THE WORK SHALL BE INCLUDED IN THE UNIT PRICE BID PER FOOT FOR ITEM 622 - MEDIAN WALL, AS PER PLAN.

CONTRACTION JOINTS IN CONCRETE PAVEMENT OR BASE WIDENING

CONTRACTION JOINTS SHALL BE CONSTRUCTED AS PER ODOT STANDARD CONSTRUCTION DRAWING BP-2.2, EXCEPT THAT THE SPACING SHALL BE 14 FOOT MAXIMUM.

ITEM SPECIAL - ROLLER COMPACTED CONCRETE (T=9")

THIS ITEM SHALL COMPLY WITH OTIC SPECIFICATION FOR ROLLER COMPACTED CONCRETE AND SHALL INCLUDE ALL EQUIPMENT, MATERIAL, LABOR AND OTHER INCIDENTALS NECESSARY TO COMPLETE THIS ITEM OF WORK. SAW CUT JOINTS SHALL BE INSTALLED TO MATCH ADJACENT JOINTS IN ITEM 452 AND SHALL BE IN ACCORDANCE WITH STANDARD CONSTRUCTION DRAWING BP-2.2 AND THE SPECIFICATIONS.

ITEM SPECIAL - EXISTING IMPACT ATTENUATOR RESET ON NEW FOUNDATION

REMOVE THE EXISTING IMPACT ATTENUATOR AND FOUNDATION WITHOUT DAMAGING ANY OF THE ABOVE GROUND COMPONENTS. INSTALLATION SHALL BE AT THE LOCATION SPECIFIED IN THE PLANS ON A NEW FOUNDATION WITH A NEW CONCRETE BACKUP ASSEMBLY CONSTRUCTED AS PER MANUFACTURERS SPECIFICATIONS FOR A QUADGUARD II MODEL QG211530 USING NEW ANCHOR BOLTS .

PAYMENT FOR THE ABOVE WORK SHALL BE MADE AT THE UNIT PRICE BID PER EACH FOR ITEM SPECIAL - EXISTING IMPACT ATTENUATOR RESET ON NEW FOUNDATION, EACH, AND SHALL INCLUDE ALL LABOR, TOOLS, EQUIPMENT AND MATERIALS NECESSARY TO CONSTRUCT A COMPLETE AND FUNCTIONAL IMPACT ATTENUATOR.

ITEM SPECIAL - PRESSURE RELIEF JOINT, TYPE A, AS PER PLAN

CONSTRUCT THIS ITEM ACCORDING TO ODOT STANDARD DRAWING BP-2.3 AT THE LOCATIONS SHOWN IN THE PLANS ONLY IF THE ALTERNATE PAVEMENT DESIGN WITH CONCRETE BASE IS CHOSEN. OUTLET UNDERDRAIN TO THE NEAREST CATCH BASIN OR TO A NEW PRECAST CONCRETE OUTLET AS DIRECTED BY THE CHIEF ENGINEER.

PAYMENT FOR THE ABOVE WORK SHALL BE MADE AT THE UNIT PRICE BID PER LINEAR FOOT FOR ITEM SPECIAL - PRESSURE RELIEF JOINT, TYPE A, AS PER PLAN INCLUDING THE PIPE UNDERDRAIN. THE UNIT PRICE BID SHALL INCLUDE ALL LABOR, TOOLS, EQUIPMENT AND MATERIALS NECESSARY TO CONSTRUCT A COMPLETE AND FUNCTIONAL PRESSURE RELIEF JOINT WITH UNDERDRAIN.

THE ESTIMATED LENGTHS AND LOCATIONS ARE SHOWN BELOW:

ITEM SPECIAL - PRESSURE RELIEF JOINT, TYPE A, AS PER PLAN

STATION	SIDE	FT.
129+49.55	LT./RT	74
131+46.65	LT./RT.	74
299+90.35	LT./RT.	74
TOTAL		222

CONTRACTION AND/OR EXPANSION JOINTS

ALTHOUGH SPECIFIC LOCATIONS OF CERTAIN CONTRACTION AND EXPANSION JOINTS HAVE BEEN DETAILED ON THIS PLAN, NO WAIVER OF THE SPECIFICATIONS IS INTENDED. PROVISIONS OF EXPANSION JOINTS AT ALL MAJOR STRUCTURES AND THE MAXIMUM SPACING BETWEEN CONTRACTION JOINTS SHALL, IN ALL CASES, BE IN ACCORDANCE WITH ODOT STANDARD CONSTRUCTION DRAWING BP-2.2 AND THE SPECIFICATIONS.

ITEM 202 - CONCRETE BARRIER REMOVED, AS PER PLAN

IN ADDITION TO THE BARRIER REMOVAL, ITEM 202 - CONCRETE BARRIER REMOVED, AS PER PLAN SHALL INCLUDE ALL LABOR AND MATERIALS NEEDED TO PROVIDE A WEATHER TIGHT CAP ON THE EXISTING SP625-CONDUIT WITH MULTI-CELL INTERDUCT. PAYMENT FOR ALL MATERIALS, LABOR, EQUIPMENT AND INCIDENTALS SHALL BE INCLUDED IN THE UNIT PRICE BID PER FOOT FOR ITEM 202 - CONCRETE BARRIER REMOVED, AS PER PLAN.

ITEM 617 - SHOULDER PREPARATION, AS PER PLAN

IN ADDITION TO THE REQUIREMENTS OF ITEM 617.04 OF THE SPECIFICATIONS, THE CONTRACTOR SHALL PERFORM THE FOLLOWING ADJACENT TO NEW PAVEMENT:

THE SUBGRADE SHALL BE PLACED IN 6" LIFTS (MAX) AND COMPACTED IN ACCORDANCE WITH ITEM 204 - SUBGRADE COMPACTION IMMEDIATELY PRIOR TO PLACING THE AGGREGATE AND AFTER THE SUBGRADE IS SHAPED OR BLADED TO GIVE A STRAIGHT VERTICAL EDGE WITH THE ADJACENT DIRT. THE ENTIRE THICKNESS OF AGGREGATE SHALL BE SUPPORTED ALONG THE OUTER EDGE WITH TOPSOIL AND FILL DIRT THAT IS CONSISTENT WITH THE FORE SLOPE.

PAYMENT FOR THE ABOVE WORK SHALL BE MADE AT THE UNIT PRICE BID PER SQUARE YARD FOR ITEM 617 - SHOULDER PREPARATION, AS PER PLAN, AND SHALL INCLUDE ANY EXCAVATION, EMBANKMENT, LINEAR GRADING, SUBGRADE COMPACTION, PROOF ROLLING, ALL LABOR, TOOLS, EQUIPMENT AND MATERIALS NECESSARY TO COMPLETE THIS WORK.

1	ADDENDUM NO. 2	CLH	1/19/15
-	-	-	-
NO.	REVISIONS	BY	DATE

OHIO TURNPIKE AND INFRASTRUCTURE COMMISSION

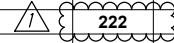
GENERAL NOTES
M.P. 186.3 PORTAGE COUNTY

GPD GROUP
Glass, Pyle, Schwaner, Szabo & DeHaven, Inc.
520 South Main Street, Suite 2531, Akron, Ohio 44311 Fax 330-572-2100

DESIGNED: CLH	CHECKED: PJF	DATE: 08/11/15
DRAWN: CLH	IN CHARGE: MRG	SCALE: N.T.S.

PROJECT NO. 39-16-02A SHEET 13 OF 371

SHEET NUMBER														ITEM	GRAND TOTAL	UNIT	DESCRIPTION	REF. NO.	
12	13	14	15	16	18	19	190	191	192	193	197	198	INSERT 1						
1000						388	8689				41189				203	51266	CU YD	ASPHALT ALTERNATE - ASPHALT PAVEMENT BASE EXCAVATION (ASPHALT ALTERNATE)	
											5214				204	5214	CU YD	EXCAVATION INCLUDING EMBANKMENT, AS PER PLAN (ASPHALT ALTERNATE)	197
											13477				SP302	13477	CU YD	ASPHALT CONCRETE BASE, PG 64-22, (T = 8" SHOULDERS), (ASPHALT ALTERNATE)	
											49587				SP302	49587	CU YD	ASPHALT CONCRETE BASE, PG 64-22 (T = 11" PAVEMENT), (ASPHALT ALTERNATE)	
											56093				SPECIAL	56093	GALLON	TRACKLESS TACK (ASPHALT ALTERNATE)	
						388	8689				43221				203	52297	CU. YD.	CONCRETE ALTERNATE - CONCRETE PAVEMENT BASE EXCAVATION (CONCRETE ALTERNATE)	
											4523				204	4523	CU. YD.	EXCAVATION INCLUDING EMBANKMENT, AS PER PLAN (CONCRETE ALTERNATE)	197
											53687				SPECIAL	53687	SQ. YD.	ROLLER COMPACTED CONCRETE (SHOULDER, CONCRETE ALTERNATE)	
											167730				305	167730	SQ. YD.	CONCRETE BASE, (12") (CONCRETE ALTERNATE)	
											42914				SPECIAL	42914	GALLON	TRACKLESS TACK (CONCRETE ALTERNATE)	
															SPECIAL	222	FT.	PRESSURE RELIEF JOINT, TYPE A, AS PER PLAN	13
																		MAINTENANCE OF TRAFFIC	
																		FOR MAINTENANCE OF TRAFFIC GENERAL SUMMARY SEE SHEET	25
																		TRAFFIC CONTROL	
																		FOR TRAFFIC CONTROL GENERAL SUMMARY SEE SHEET	314
																		LIGHTING	
																		FOR LIGHTING GENERAL SUMMARY SEE SHEET	#REF!
																		BRIDGE MAINTENANCE	
																		FOR BRIDGE MAINTENANCE SUMMARIES SEE SHEET	365
																		GENERAL	
																		IB, ART.6 LUMP	
																		PREMIUM FOR CONTRACT PERFORMANCE BOND AND PAYMENT BOND	
																		MAINTAINING TRAFFIC	
																		FIELD OFFICE	
																		CONSTRUCTION LAYOUT SURVEY	
																		MOBILIZATION	



Drawing File: c:\2015\201516\roadway\sheets\201516\05004.dwg Layout: Model
 Date: Nov 24, 2015 Time: 9:28 am User: pfr

Technician: pfr

1	ADDENDUM NO. 2	CLH	11/19/15
-	-	-	-
NO.	REVISIONS	BY	DATE

OHIO TURNPIKE AND INFRASTRUCTURE COMMISSION

GENERAL SUMMARY

M.P. 186.3 PORTAGE COUNTY

GPD GROUP

Glen, Pyle, Schreiner, Burns & DeHaven, Inc.
 520 South Main Street, Suite 2331, Akron, Ohio 44311 Fax 330-572-2101 330-572-2100

DESIGNED:	CLH	CHECKED:	PJF	DATE:	08/11/15
DRAWN:	RTG	IN CHARGE:	MRG	SCALE:	N.T.S.

PROJECT NO. 39-16-02A SHEET 189 OF 371

