

OHIO TURNPIKE COMMISSION

ADDENDUM NO. 1

CONTRACT NO. 43-12-03
**BRIDGE REHABILITATIONS
OVER OHIO TURNPIKE
WILLIAMS COUNTY, OHIO**

MALCOLM CHURCH RD. (C.R. 4),	M.P. 3.10	S.R. 576, M.P. 10.20	
RICKETTS BRIDGE RD. (T.R. 5),	M.P. 4.10	CUMMINS RD. (T.R. 12.5),	M.P. 11.60
WEST EAGLE CHURCH RD. (C.R. 6),	M.P. 5.10	TOWNSHIP LINE RD. (C.R. 13),	M.P. 12.10
NETTLE CREEK RD. (C.R. N.30),	M.P. 6.00	STATE ROUTE 15 (EXIT 13),	M.P. 13.20
WHITE BRIDGE RD. (C.R. 7.75),	M.P. 6.90	S.R. 15 (OVER OT RAMP),	M.P. 13.20
CHAMPION RD. (T.R. 8.50),	M.P. 7.70	INTERCHANGE 13 RAMP,	M.P. 13.40
FARMER CENTER RD. (C.R. 10),	M.P. 9.00	PLEASANT HILL RD. (C.R. 16),	M.P. 15.10

OPENING DATE: ***EXTENDED*** to 2:00 P.M. (E.D.T.), OCTOBER-17 **24**, 2012

ATTENTION OF BIDDERS IS DIRECTED TO:

ANSWERS TO QUESTIONS RECEIVED THROUGH 5:00 P.M., OCTOBER 15, 2012

MODIFICATIONS TO THE CONTRACT DOCUMENTS

COVER SHEET AND NOTICE TO BIDDERS PAGE NB-1

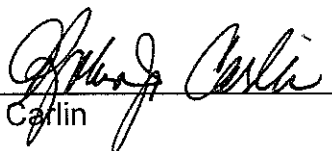
MODIFICATIONS TO THE BID FORM

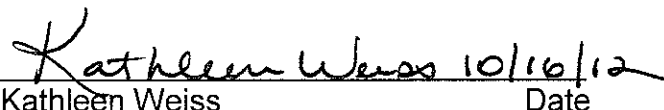
Pages OTC-BF-2 and BF-3

MODIFICATIONS TO THE PLAN SHEETS

Plan Sheets 2, 25, 26, 40, 42, 53, 55, 63 and 65 of 69

Issued by the Ohio Turnpike Commission October 16, 2012. Issuance authorized by Robin Carlin, Deputy Executive Director, and Kathleen Weiss, General Counsel.


Robin Carlin
Date 10/16/12


Kathleen Weiss
Date 10/16/12

OHIO TURNPIKE COMMISSION
ADDENDUM NO. 1
CONTRACT NO. 43-12-03

ANSWERS TO QUESTIONS RECEIVED THROUGH 5:00 P.M., OCTOBER 15, 2012

Q#1 Structure MP 10.20 has quantity for Item SP 533H at the rear abutment. Per Plan Sheet 65 new concrete for this joint replacement shall be included with Item 848 Full Depth Repair. No quantity has been included in Item 848 Full Depth Repair for Structure MP 10.20. Only quantities for MP 13.20, 13.20 Ramp, & 13.40 have been included in Item 848 Full Depth Repair. Please verify.

A#1 *The reference on Plan Sheet 65 to new concrete to be included with Item No. 848 is accurate only for those bridges which have Item No. 848 – MICRO SILICA MODIFIED CONCRETE OVERLAY USING HYDRODEMOLITION, 2" THICK (MP 13.20 and MP 13.40). For those locations where there is no intended hydrodemolition, the new concrete is to be paid for as Item 511 – CLASS S CONCRETE, which has been added to the Plans as part of this Addendum No. 1. The Plan Sheets and quantities have been revised to reflect this. In addition, there were two (2) other locations where the patching of the deck concrete was inadvertently included as Item No. 848 – FULL DEPTH REPAIR. These locations on MP 5.10 and MP 13.20 (Ramp) have been revised to price this Work as Item No. 519 – PATCHING CONCRETE STRUCTURES. The following Plan Sheets have been revised to reflect the revisions to the quantities and the Bid Items: 2, 25, 26, 40, 42, 53, 55, 63 and 65 (see changes outlined below in this Addendum No. 1 and the attached replacement Bid Form and Plan Sheets).*

Q#2 This job has 5 bridges set up for remove and re-use of the vandal fence per SP-607. It states to remove and replace with new bases and other material per standard drawing CL-1 or 2. However 4 of the 5 bridges have a completely different type of old steel fence on them that would make it impossible to rebuild any of the fence. Are these bridges to get completely new fence per the standards? If so, should the bid item for this be a new item and not a re-erect item? The 5 bridges are the 3.10, 5.10, 6.90, 7.70, and 11.60 Mile Post, with the 11.6 as the only bridge that could be rebuilt fence.

A#2 *The Commission will respond to this question in Addendum No. 2.*

MODIFICATIONS TO THE CONTRACT DOCUMENTS

The following changes are made to the Contract Documents for Contract No. 43-12-03:

Deletions are shown with ~~strikethrough~~ text.

Changes/Additions are shown with ***bold italicized*** text.

Modifications to the Cover Sheet and Notice to Bidders

Cover Sheet and Notice to Bidders Page OTC-NB-1: The Bid Opening date has been extended from 2:00 P.M. (E.D.T.) October 17, 2012, to 2:00 P.M. (E.D.T.), October **24**, 2012.

(Bidders are advised to utilize the attached replacement Cover Page and Page OTC-NB-1.)

Modifications to the Bid Form via Addendum No. 1

Page OTC-BF-2: Added ***Ref. No. 8a, Item 511 – CLASS S CONCRETE, with the Approx. Quantity of 10 CU YD.***

Page OTC-BF-2: Under Ref. No. 15, Item No. SP 519 – PATCHING CONCRETE STRUCTURES, the Approximate Quantity has been revised from 4460 SQ FT to **1500 SQ FT.**

Page OTC-BF-3: Under Ref. No. 33, Item No. 848 – MICRO SILICA MODIFIED CONCRETE OVERLAY (VARIABLE THICKNESS), MATERIAL ONLY, the Approximate Quantity has been revised from 44 CU YD to **10 CU YD.**

Page OTC-BF-3: Under Ref. No. 36, Item 848 – FULL DEPTH REPAIR, the Approximate Quantity has been revised from 34 CU YD to **26 CU YD.**

(Bidders are advised to utilize the attached replacement Bid Form Pages OTC-BF-2 & OTC-BF-3.)

Modifications to the Plans via Addendum No. 1

The following changes are made in Contract No. 43-12-03:

Changes to the Plan Sheets: Additions and deletions are indicated with a cloud and revision triangle thus:



Plan Sheet 2 of 69: added ***Item 511 – CLASS S CONCRETE*** with quantities listed for MP 10.20 and MP 13.20 (Ramp). Quantity listed for SP 519 – PATCHING CONCRETE STRUCTURES have been revised for MP 5.10 from 200 to **235** and for MP 13.20 (Ramp) from 50 to **55** SQ FT revising the total quantity from 4460 to **1500** SQ FT. Removed quantity for Item 848 – MICRO SILICA MODIFIED CONCRETE OVERLAY (VARIABLE THICKNESS), MATERIAL ONLY for MP 13.20 (Ramp) revising the total quantity from 44 to **10** CU YD. Removed quantity for Item 848 – FULL DEPTH REPAIR for MP 5.10, MP 10.20 and MP 13.20 (Ramp) revising the total quantity from 34 to **26** CU YD.

Plan Sheet 25 of 69: Revised quantity for Item SP 519 – PATCHING CONCRETE STRUCTURES from 200 to **235** SQ FT. Removed Item 848 – ~~FULL DEPTH REPAIR~~, which is now incorporated in Item 519 (PATCHING)

Plan Sheet 26 of 69: Removed ~~FULL DEPTH REPAIR QUANTITIES TABLE~~ and revised PATCHING CONCRETE STRUCTURE TABLE for pricing as Item SP 519 – PATCHING CONCRETE STRUCTURES in lieu of Item 848 – ~~FULL DEPTH REPAIR~~.

Plan Sheet 40 of 69: Added ***Item 511 – CLASS S CONCRETE with a quantity of 3 CU YD.***

Plan Sheet 42 of 69: Added **table** identifying concrete used in SP 533H Work as **Class S Concrete**.

Plan Sheet 53 of 69: Added **Item 511 – CLASS S CONCRETE with a quantity of 7 CU YD**. Revised quantity for Item SP 519 – PATCHING CONCRETE STRUCTURES from 50 to **55 SQ FT**. Removed ~~Item 848 – FULL DEPTH REPAIR~~, which is now incorporated in Item 511 and Item 519

Plan Sheet 55 of 69: Deleted table titled ~~VARIABLE DEPTH OVERLAY QUANTITIES~~ and added table identifying **PATCHING ABUTMENT SLAB CONCRETE**. Retitled FULL DEPTH OVERLAY QUANTITIES table as **FULL DEPTH CLASS S CONCRETE (SP533H)** specifying concrete used in SP 533H Work as **Class S Concrete**. Revised Note 3 to perform repairs of the Abatement Slab Units as specified by Item SP 519 – PATCHING CONCRETE STRUCTURES and sealed as specified by SP 536 – CONCRETE WEATHER PROOFING, and deleted reference to ~~Item 848 – FULL DEPTH REPAIR~~.

Plan Sheet 63 of 69: Revised SP 519 PATCHING CONCRETE (SUBSTRUCTURE) quantity for MP 5.10 from 35 SQ FT to **70 SQ FT**, and subtotal and total from 200 to **235**. Revised SP 519 PATCHING CONCRETE SUPERSTRUCTURE for MP 13.20 (Ramp) from referencing Sheet No. NA to Sheet No. **55**, the quantity from NA SQ FT to **5 SQ FT**, and the subtotal and total from 50 SQ FT. to **55 SQ FT**.

Plan Sheet 65 of 69: Revised Note in SP 533H Detail to add that payment for **concrete at MP 10.20 and 13.20 (RAMP) is to be included in Item 511**.

(Bidders are advised to utilize the attached replacement Plan Sheets Pages 2, 25, 26, 40, 42, 53, 55, 63 and 65.)

Receipt of Addendum No. 1 to Contract No. 43-12-03 is hereby acknowledged:

(Firm Name)

(Signature)

(Printed Name)

Date: _____

**Ohio Turnpike Commission
682 Prospect Street
Berea, Ohio 44017**

CONTRACT NO. 43-12-03

**BRIDGE REHABILITATIONS
OVER OHIO TURNPIKE
WILLIAMS COUNTY, OHIO**

MALCOLM CHURCH RD. (C.R. 4),	M.P. 3.10	S.R. 576,	M.P. 10.20
RICKETTS BRIDGE RD. (T.R. 5),	M.P. 4.10	CUMMINS RD. (T.R. 12.5),	M.P. 11.60
WEST EAGLE CHURCH RD. (C.R. 6),	M.P. 5.10	TOWNSHIP LINE RD. (C.R. 13),	M.P. 12.10
NETTLE CREEK RD. (C.R. N.30),	M.P. 6.00	STATE ROUTE 15 (EXIT 13),	M.P. 13.20
WHITE BRIDGE RD. (C.R. 7.75),	M.P. 6.90	S.R. 15 (OVER OT RAMP),	M.P. 13.20
CHAMPION RD. (T.R. 8.50),	M.P. 7.70	INTERCHANGE 13 RAMP,	M.P. 13.40
FARMER CENTER RD. (C.R. 10),	M.P. 9.00	PLEASANT HILL RD. (C.R. 16),	M.P. 15.10

OPENING DATE: 2:00 P.M. (E.D.T.), OCTOBER 17 24, 2012

Submitted By:

Company Name: _____

Contact Name: _____

Street Address: _____

City: _____

State: _____ Zip Code: _____

Telephone Number: _____

Fax Number: _____

Email: _____

Published and Copyrighted © 2012 by The Ohio Turnpike Commission

If you have received these Contract Documents from any entity other than the Ohio Turnpike Commission, you risk the receipt of inaccurate or incomplete information and/or Plans; and will not receive any addenda issued by the Commission. These documents are copyrighted by the Ohio Turnpike Commission. Any unauthorized electronic reproduction of these documents for the purpose of resale or bidding subscription services is expressly prohibited.

OHIO TURNPIKE COMMISSION

682 Prospect Street
Berea, Ohio 44017

NOTICE TO BIDDERS

Sealed Bids will be received by the Ohio Turnpike Commission ("Commission") at 682 Prospect Street, Berea, Ohio 44017 for the following Project:

CONTRACT NO. 43-12-03

BRIDGE REHABILITATIONS OVER THE OHIO TURNPIKE WILLIAMS COUNTY, OHIO

MALCOLM CHURCH RD. (C.R. 4),	M.P. 3.10	S.R. 576,	M.P. 10.20
RICKETTS BRIDGE RD. (T.R. 5),	M.P. 4.10	CUMMINS RD. (T.R. 12.5),	M.P. 11.60
WEST EAGLE CHURCH RD. (C.R. 6),	M.P. 5.10	TOWNSHIP LINE RD. (C.R. 13),	M.P. 12.10
NETTLE CREEK RD. (C.R. N.30),	M.P. 6.00	STATE ROUTE 15 (EXIT 13),	M.P. 13.20
WHITE BRIDGE RD. (C.R. 7.75),	M.P. 6.90	S.R. 15 (OVER OT RAMP),	M.P. 13.20
CHAMPION RD. (T.R. 8.50),	M.P. 7.70	INTERCHANGE 13 RAMP,	M.P. 13.40
FARMER CENTER RD. (C.R. 10),	M.P. 9.00	PLEASANT HILL RD. (C.R. 16),	M.P. 15.10

Bids are to be submitted in accordance with the Contract Documents prepared by the Commission.

Prevailing Wage Rates and Equal Employment Opportunity requirements are applicable to this Project.

All Bidders entering into a Contract on a Commission-administered Project and their Subcontractors will be required to be enrolled, and in good standing in a "Drug-Free Safety Program" approved by the Ohio Bureau of Workers' Compensation.

Bids will be received for:

Repair and patching of deteriorated concrete; rehabilitation and/or replacement of bearing devices and expansion joints; concrete overlay of bridge decks; sealing of construction joints; performance of concrete weatherproofing; maintenance of traffic; and all other items incidental to the completion of the Work. All Work is to be performed as per the Plans, Specifications, Special Provisions, and other Contract Documents for Contract No. 43-12-03

Bids will be accepted until **October 17 24, 2012, at 2:00 P.M (E.D.T.)**, when all Bids will be opened and read aloud. To avoid a potential extension of the Bid Opening date and/or a

CONTRACT NO. 43-12-03
BID FORM

Ref. No.	Item No.	Item Description	Approx. Quantity	Unit	Unit Cost	Extended Bid Amount
GENERAL						
1	IB ART. 6	PREMIUM FOR CONTRACT PERFORMANCE BOND AND PAYMENT BOND	1	LUMP		
2	SP614	MAINTAINING TRAFFIC	1	LUMP		
3	SP619	FIELD OFFICE	1	LUMP		
4	SP623	CONSTRUCTION LAYOUT SURVEY	1	LUMP		
5	624	MOBILIZATION	1	LUMP		
TOTAL - GENERAL						
STRUCTURES						
6	SP 202	PORTIONS OF STRUCTURE REMOVED	1	LUMP		
7	SP 509	EPOXY COATED REINFORCING STEEL, GRADE 60	300	POUND		
8	510	DOWEL HOLES WITH NONSHRINK, NONMETALLIC GROUT	454	EACH		
8a	511	CLASS S CONCRETE	10	CU. YD.		
9	513	WELDED STUD SHEAR CONNECTORS, AS PER PLAN	10	EACH		
10	SP 516A	CRACK REPAIR USING EPOXY INJECTION	112	LIN. FT.		
11	SP 516B	SEALING OF CONSTRUCTION JOINTS	9,311	LIN. FT.		
12	SP 516G	REPLACE EXPANSION BEARING DEVICE	233	EACH		
13	SP 516H	REHABILITATION OF FIXED BEARING ASSEMBLY	1	EACH		
14	SP 516J	REPLACE FIXED BEARING DEVICE	43	EACH		
15	SP 519	PATCHING CONCRETE STRUCTURES	4460 1500	SQ. FT.		
16	SP 519C	CONCRETE PARAPET REPAIRS	93	EACH		
17	SP 527	FALSEWORK, TEMPORARY BRACING AND PROTECTIVE STRUCTURES	1	LUMP		
18	SP 533E	CONTINUOUS ELASTOMER SEAL IN ELASTOMERIC CONCRETE JOINT	90	LIN. FT.		
19	SP 533F	REPLACEMENT OF COMPRESSION SEAL WITH CONTINUOUS ELASTOMER SEAL	579	LIN. FT.		
20	SP 533G	REPLACEMENT OF STRIP SEAL WITH CONTINUOUS ELASTOMER SEAL	60	LIN. FT.		
21	SP 533H	CONTINUOUS ELASTOMER SEAL IN STRUCTURAL STEEL JOINT	449	LIN. FT.		
22	SP 536	CONCRETE WEATHERPROOFING, DECK, ABUTMENT SLABS AND APPROACH SLABS	9,990	SQ. YD.		
23	SP 536	CONCRETE WEATHERPROOFING, PARAPETS	6,245	SQ. YD.		
24	SP 536	CONCRETE WEATHERPROOFING, SUBSTRUCTURE	3,813	SQ. YD.		
25	SP 607A	REMOVE AND REUSE EXISTING FENCE	1	LUMP		
26	621	RPM	4	EACH		
27	642	EDGE LINE, TYPE 1	0.10	MILE		
28	642	EDGE LINE, TYPE 1, AS PER PLAN	0.20	MILE		
29	642	CENTER LINE, TYPE 1	0.05	MILE		
30	642	ISLAND MARKING, TYPE 1	690	SQ. FT.		

CONTRACT NO. 43-12-03
BID FORM

Ref. No.	Item No.	Item Description	Approx. Quantity	Unit	Unit Cost	Extended Bid Amount
31	848	MICRO SILICA MODIFIED CONCRETE OVERLAY USING HYDRODEMOLITION, 2" THICK	2,118	SQ. YD.		
32	848	SURFACE PREPARATION USING HYDRODEMOLITION	2,118	SQ. YD.		
33	848	MICRO SILICA MODIFIED CONCRETE OVERLAY (VARIABLE THICKNESS), MATERIAL ONLY	44	CU. YD.		
			10			
34	848	HAND CHIPPING	9	SQ. YD.		
35	848	TEST SLAB	1	LUMP		
36	848	FULL DEPTH REPAIR	34	CU. YD.		
			26			
TOTAL - STRUCTURES						

BID SUMMARY

The total amount of the preceding proposal based upon the approximate quantities given above, and the unit prices and lump sum specified by the undersigned, amounts to the sum of:

TOTAL BASE BID (INCLUDES REF. NO. 1 THRU REF. NO. 36) ----->

THE BID, FOR CONTRACT No. 43-12-03, OF UNIT PRICE EXTENSIONS IS ALL LABOR, EQUIPMENT AND MATERIALS , FOR THE SUM OF:

(Sum in words) _____ DOLLARS

Item No.'s that do not have an IB or SP designation are Items drawn from the 2010 ODOT CMS. Bidders should refer to the 2010 ODOT CMS for information and guidance concerning these items.

BRIDGE ESTIMATED QUANTITY SUMMARY


ITEM	TOTAL	UNIT	DESCRIPTION	STRUCTURE MILE POST LOCATION											
				MP 3.10	MP 4.10	MP 5.10	MP 6.00	MP 6.90	MP 7.70	MP 9.00	MP 10.20	MP 11.60	MP 12.10	MP 13.20	MP 13.20 (RAMP)
SP 502	LUMP SUM		PORTIONS OF STRUCTURE REMOVED	LUMP	LUMP	LUMP	LUMP	LUMP	LUMP	LUMP	LUMP	LUMP	LUMP	LUMP	LUMP
SP 509	300 (")	POUND	EPOXY COATED REINFORCING STEEL GRADE 60	N/A	N/A	N/A	N/A	N/A	N/A	N/A	N/A	N/A	N/A	100 (")	N/A
510	454	EACH	DOVEL HOLES WITH NONSHRINK NONMETALLIC GROUT	32	32	32	N/A	32	32	N/A	N/A	32	32	62	32
511	10	CU YD	CLASS 5 CONCRETE	N/A	N/A	N/A	N/A	N/A	N/A	N/A	3	N/A	N/A	7	N/A
513	10 (")	EACH	WELDED STEEL SHEAR CONNECTORS, 1/2" DIA	N/A	N/A	N/A	N/A	N/A	N/A	N/A	N/A	N/A	N/A	N/A	N/A
SP 516A	112 (")	LIN FT	CRACK REPAIR USING EPOXY INJECTION	N/A	N/A	N/A	N/A	N/A	N/A	N/A	N/A	N/A	N/A	50 (")	N/A
SP 516B	9311	LIN FT	SEALING OF CONSTRUCTION JOINTS	633	633	641	736	684	635	680	678	634	635	689	644
SP 516G	233	EACH	REPLACE EXPANSION BEARING DEVICE	20	20	20	20	20	20	20	N/A	20	20	21	20
SP 516H	43	EACH	REHABILITATION OF FIXED BEARING ASSEMBLY	N/A	N/A	N/A	N/A	N/A	N/A	N/A	N/A	N/A	N/A	N/A	N/A
SP 516J	43	EACH	REPLACE FIXED BEARING DEVICE	N/A	N/A	N/A	N/A	N/A	N/A	N/A	N/A	N/A	N/A	7	10
SP 519	1600	SQ YD	PATCHING CONCRETE STRUCTURES	110	105	233	45	185	115	30	110	60	10	65	205
SP 519C	1600	EACH	CONCRETE PARAPET REPAIRS	18	N/A	72	N/A	9	34	N/A	N/A	21	N/A	N/A	1
SP 527	LUMP SUM		FALSEWORK, TEMPORARY BRACING AND PROTECTIVE STRUCTURES	LUMP	LUMP	LUMP	N/A	LUMP	LUMP	N/A	N/A	LUMP	LUMP	LUMP	N/A
SP 532E	90	LIN FT	CONTINUOUS ELASTOMER SEAL IN ELASTOMERIC CONCRETE JOINT	30	N/A	30	N/A	30	N/A	N/A	N/A	N/A	N/A	N/A	N/A
SP 533F	570	LIN FT	REPLACEMENT OF COMPRESSION SEAL WITH CONTINUOUS ELASTOMER SEAL	60	60	60	60	60	60	64	36	60	60	N/A	60
SP 533G	449	LIN FT	REPLACEMENT OF STRIP SEAL WITH CONTINUOUS ELASTOMER SEAL	N/A	N/A	N/A	N/A	N/A	N/A	N/A	N/A	N/A	N/A	N/A	N/A
SP 533H	449	LIN FT	REPLACEMENT OF STRIP SEAL IN STRUCTURAL STEEL JOINT	N/A	N/A	N/A	N/A	N/A	N/A	N/A	35	N/A	N/A	94	132
SP 536	9990	SQ YD	CONCRETE WEATHERPROOFING, DECK, ABUTMENT SLABS AND APPROACH SLABS	635	576	685	915	575	576	710	810	575	680	705	685
SP 536	6245	SQ YD	CONCRETE WEATHERPROOFING, PARAPETS	460	450	455	600	490	450	455	435	450	450	450	460
SP 536	3813	SQ YD	CONCRETE WEATHERPROOFING, SUBSTRUCTURE	8	5	4	5	3	3	450	485	450	450	450	450
SP 537A	LUMP		REMOVE AND REUSE EXISTING FENCE	LUMP	N/A	LUMP	N/A	LUMP	LUMP	N/A	N/A	LUMP	N/A	N/A	N/A
621	1	EACH	RPM	N/A	N/A	N/A	N/A	N/A	N/A	N/A	N/A	N/A	N/A	N/A	N/A
642	0.10	MILE	EDGE LINE TYPE 1	N/A	N/A	N/A	N/A	N/A	N/A	N/A	N/A	N/A	N/A	N/A	N/A
642	0.20	MILE	EDGE LINE TYPE 1, AS PER PLAN	N/A	N/A	N/A	N/A	N/A	N/A	N/A	N/A	N/A	N/A	N/A	N/A
642	0.05	MILE	CENTER LINE TYPE 1	N/A	N/A	N/A	N/A	N/A	N/A	N/A	N/A	N/A	N/A	N/A	N/A
642	690	SQ FT	ISLAND MARKING TYPE 1	N/A	N/A	N/A	N/A	N/A	N/A	N/A	N/A	N/A	N/A	N/A	N/A
648	2118	SQ YD	MICRO SILICA MODIFIED CONCRETE OVERLAY USING HYDRODEMOLITION, 2" THICK	N/A	N/A	N/A	N/A	N/A	N/A	N/A	N/A	N/A	N/A	N/A	N/A
648	2118	SQ YD	SURFACE PREPARATION USING HYDRODEMOLITION	N/A	N/A	N/A	N/A	N/A	N/A	N/A	N/A	N/A	N/A	N/A	N/A
648	10	CU YD	MICRO SILICA MODIFIED CONCRETE OVERLAY (VARIABLE THICKNESS), MATERIAL ONLY	N/A	N/A	N/A	N/A	N/A	N/A	N/A	N/A	N/A	N/A	N/A	N/A
648	10	SQ YD	HAND CHIPPING	N/A	N/A	N/A	N/A	N/A	N/A	N/A	N/A	N/A	N/A	N/A	N/A
648	LUMP SUM		TEST SLAB	N/A	N/A	N/A	N/A	N/A	N/A	N/A	N/A	N/A	N/A	N/A	N/A
648	20	CU YD	FULL DEPTH REPAIR	N/A	N/A	N/A	N/A	N/A	N/A	N/A	N/A	N/A	N/A	N/A	N/A

GENERAL SUMMARY

ITEM	TOTAL	UNIT	DESCRIPTION
STRUCTURE			SEE TABLE ABOVE FOR STRUCTURES MP 3.10 THRU MP 15.10 ESTIMATED QUANTITIES
MISCELLANEOUS			
SP 614	LUMP		PREMIUM FOR CONTRACT PERFORMANCE BOND AND PAYMENT BOND
SP 619	LUMP		MAINTAINING TRAFFIC
SP 623	LUMP		FIELD OFFICE
624	LUMP		CONSTRUCTION LAYOUT SURVEY
			MOBILIZATION

NOTES:

- FOR GENERAL NOTES SEE SHEET 17 AND 18.
- SPECIFIC STRUCTURE REPAIR/RECONSTRUCTION SCOPE OF WORK AND ESTIMATED QUANTITIES ARE SHOWN ON THE GENERAL PLAN AND PROFILE SHEET FOR EACH BRIDGE STRUCTURE.
- (+) = CONTINGENCY QUANTITY, TO BE USED AT THE DISCRETION OF THE ENGINEER

1	CONCRETE QUANTITY ADJUSTMENT	N/A	10/15/12
2	REVISIONS	BY	DATE
OHIO TURNPIKE COMMISSION GENERAL SUMMARY & ESTIMATED QUANTITIES STRUCTURES FROM MP 3.10 THRU 15.10  DGL CONSULTING ENGINEERS, LLC 3455 Briarfield Blvd., Suite E Maumee, OH 43537 PHONE: 419.335.1010 FAX: 419.335.1423 DESIGNED: RSE CHECKED: JSE IN CHARGE: JSE DATE: 8/7/12 DRAWN: JSE			

CONTRACT 43-12-03 SHEET 2 OF 69

TYPE: 4 SPAN RUM-COMPOSITE STEEL BEAMS WITH
REINFORCED CONCRETE DECK, CELLULAR REINFORCED
CONCRETE JOINTS, CAP AND COLUMN TIE BARS.
SPANS: 20'-3", 07'-11", 07'-1", 25'-6" 1/2 BEAMS
ROADWAY: 25'-6" (2x70% OF JOINTS)
SKIN: 17'6" 0" 0" LEFT FORWARD
WEARING SURFACE: 1" LATEX MODIFIED CONCRETE OVERLAY
APPROACH SLABS: 15'-4" 1/2 CELLULAR ABUTMENT SLAB
ALIGNMENT: TANGENT
BUILT: 1954 (REHABILITATION 1981)
SFN: 623923
010 MILEPOST: 5.10
BRIDGE COORDINATES: 41°37' 35" LAT. 84°40' 30" LONG.

PROPOSED REHABILITATION SCOPE OF WORK:

1. PATCH ALL AREAS OF INSULOID CONCRETE (PARAPETS, ABUTMENTS AND PIER 3). ALSO REPAIR AREAS OF PARAPET WITH SOUND CONCRETE BUT EXPOSED REBAR.
2. REPLACE PIER 1 AND 3 BEAMS WITH ELASTOMERIC BEARINGS. SEE SHEETS 66-69.
3. REPLACE REAR ABUTMENT AND FORWARD ABUTMENT CONCRESSION BEAMS PER SP 501. REPAIR JOINTS AND JOINT PER SP 501. SEE SHEET 66 FOR ADDITIONAL REPAIR DETAILS.
4. SEAL ALL TRANSVERSE JOINTS, ABUTMENT SLAB REPAIR AND JOINT OF PARAPET/ CURBLINE WITH HUMMA RESIN PER SP 501B.
5. ADJUST CHAIN LINK TENSILE TO TERMINATE AT EXPANSION JOINTS PER OTC STD. DMC. CL-2. INCLUDE WITH ITEM SP 607A FOR PAYMENT. SEE SHEETS 27 AND 63 FOR ADDITIONAL DETAILS.
6. SEAL SUBSTRUCTURE CONCRETE, AS SHOWN IN THE PLANS, ALONG WITH PATCHED AREAS OF SUBSTRUCTURE CONCRETE.

-- THE PLAN SHOWN IS FROM THE ORIGINAL CONSTRUCTION & REHABILITATION PLANS MAY NOT BE DRAWN TO SCALE AND IS FOR INFORMATION ONLY.

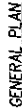
1	CONCRETE QUANTITY ADJUSTMENT	NBL	10.10.12	DATE
		BY		
				REVISIONS

GENERAL PLAN AND PROFILE
MP 5.10 - WEST EAGLE CHURCH ROAD
(C.R. 6) OVER OHIO TURNPIKE

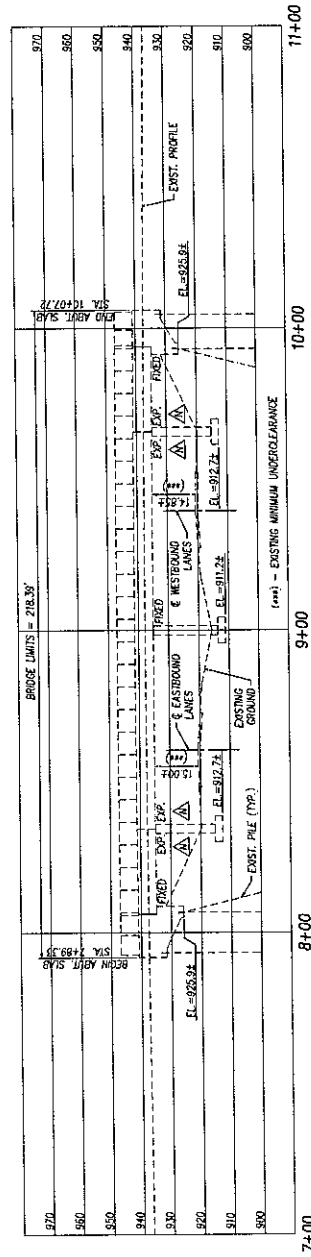
DCL CONSULTING ENGINEERS, LLC
3455 Briarfield Blvd. Suite E
Mourman, OH 43357
Ph 419.535.1015 • Fax 419.535.1428

DESIGNED: NBL	CHECKED: AEH	DATE: 8/11/12
DRAWN: NBL	IN CHARGE: AEH	SCALE: AS SHOWN

CONTRACT 43-12-03 SHEET 25 OF 69

[illegible]

AA - NEW FLASTOMERIC BEARINGS (REMOVE EXISTING). SEE SHEET 66 FOR ADDITIONAL DETAILS.



PROFILE ALONG CENTERLINE CONSTRUCTION

PATCHING CONCRETE STRUCTURE	
CONCRETE PATCH ID	AREA (SQ. FT.)
P1-1	2.0
P1-2	0.5
P1-3	0.5
P1-4	0.5
P2-1	0.5
P3-1	1.0
P3-2	1.0
P3-3	2.0
P3-4	2.0
P3-5	6.5
P3-6	11
P3-7	0.5
B	28.5
SUB-TOTAL	67.5
TOTALS CARRIED TO SHEET 63/69	70

EXISTING PAVEMENT TO REMAIN

1'-5"

ALL EXISTING REINFORCING STEEL TO REMAIN

INCLUDE COST OF CONCRETE AND WORK WITH ITEM 519, (SEE TABLE, THIS SHEET)

ABUTMENT END REPAIR DETAIL

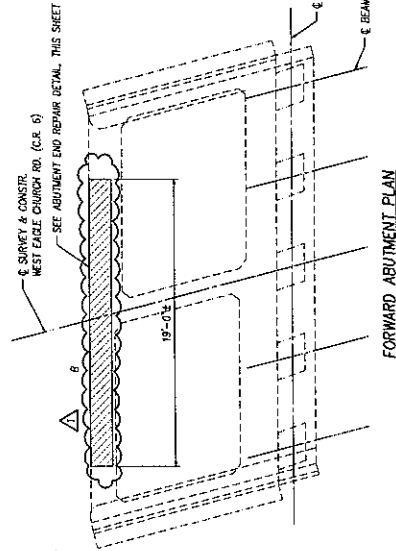
(PARTIAL EXISTING REINFORCING STEEL SHOWN FOR CLARITY)

NOTES & LEGEND

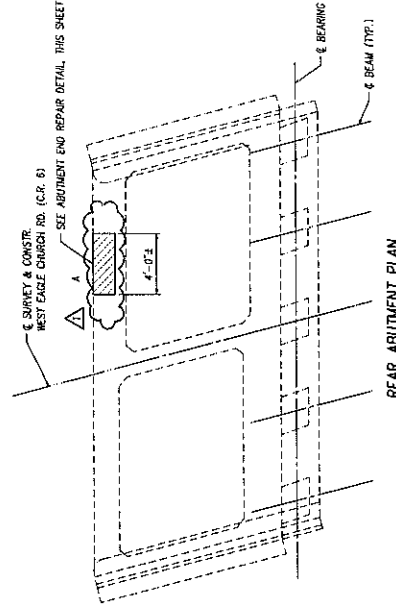
- THE SUBSTRUCTURE UNITS SHOWN ARE TO BE REPAIRED USING THE METHODS AND MATERIALS SPECIFIED BY SP 519 AND SEALED PER SP 536. SEE GENERAL NOTES ON SHEET 18 OF 69.
- PIERS ARE NUMBERED SOUTH TO NORTH. PIER COLUMNS ARE NUMBERED WEST TO EAST. SEE GENERAL PLAN FOR FURTHER DETAILS.
- INDICATES APPROXIMATE CONCRETE PATCHING LIMITS & LOCATIONS



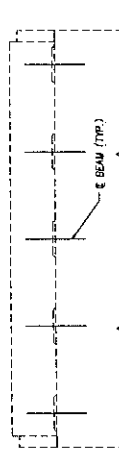
TABLE REMOVED, SINCE ITEM MOVED TO SIS PATCHING TABLE ABOVE



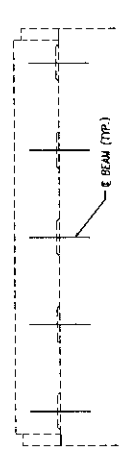
FORWARD ABUTMENT PLAN



REAR ABUTMENT PLAN

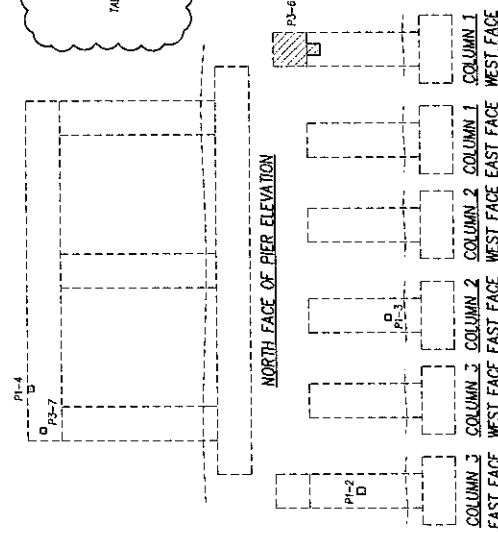


FORWARD ABUTMENT ELEVATION

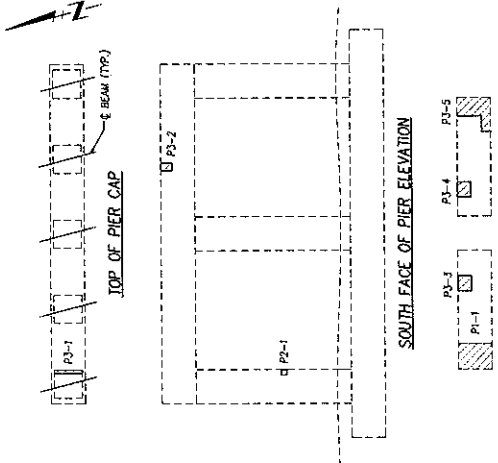


REAR ABUTMENT ELEVATION

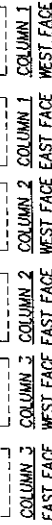
ABUTMENT PATCHING DETAILS



NORTH FACE OF PIER ELEVATION



SOUTH FACE OF PIER ELEVATION



EAST FACE WEST FACE EAST FACE WEST FACE

PIER PATCHING DETAILS



BOTTOM OF PIER CAP

1	CONCRETE QUANTITY ADJUSTMENT	NBL	10/10/12
2	REVISIONS	BY	DATE
OHIO TURNPIKE COMMISSION			
EXISTING SUBSTRUCTURE			
REPAIR DETAILS			
MP 510 WEST EAGLE CHURCH ROAD			
(C.R. 6) OVER OHIO TURNPIKE			
DGL CONSULTING ENGINEERS, LLC			
3455 Riverfield Blvd., Suite E			
Mansfield, OH 44837			
Ph: 419.333.1010 Fax: 419.333.1429			
DESIGNED: NBL	CHECKED: AET	DATE: 6/9/12	
DRAWN: NBL	IN CHARGE: AET	SCALE: AS SHOWN	

CONTRACT 43-12-03 SHEET 28 OF 69

EXISTING/PROPOSED STRUCTURE

TYPE: 4 SPAN COMPOSITE STEEL BEAMS WITH
 REINFORCED CONCRETE DECK, CELLULAR REINFORCED
 CONCRETE ABUTMENTS, CAP AND COLUMN TYPE PIERS.
 SPANS: 27'-9", 65'-5 1/2", 65'-5 1/2", 27'-9" & BEARINGS
 ROADWAY: 31'-4" 102/102 OF PARAPETS
 SKEW: 08.17707° ± RIGHT FORWARD
 WEARING SURFACES: 1" MONOLITHIC CONCRETE
 APPROACH SLABS: 15'-3" LONG; 15'-4" ± CELLULAR ABUTMENT SLAB
 ALIGNMENT: TANGENT
 BUILT: 1954 (REHABILITATION 1990)
 SRN: 8829465
 OIC MEETINGS: 10.20
 BRIDGE COORDINATES: 41° 37' 05" LAT., 84° 36' 42" LONG.

TRAFFIC DATA

ADT (2011) = 1150

PROPOSED REHABILITATION SCOPE OF WORK

STATE ROUTE 576 OVER OHIO TURNPIKE M.P. 10.20

1. PATCH ALL AREAS OF UNDESIGNED CONCRETE (DECK, ABUTMENTS AND PIERS).
2. REPLACE REAR ABUTMENT COMPRESSION SEAL JOINT PER SP 333H. REPLACE
 FORWARD ABUTMENT COMPRESSION SEAL PER SP 333H. SEE SHEET 05 FOR
 ADDITIONAL JOINT REPAIR DETAILS.
3. RE-GRADE THE EMBANKMENT TRANSITIONING AROUND THE WINGWALLS AND ALONG
 THE FACE OF THE FORWARD ABUTMENT.
4. SEAL ALL TRANSVERSE JOINTS AND TOE OF PARAPET/CURBLINE WITH INJUM RESIN
 PER SP 516B.
5. SEAL SUPERSTRUCTURE AND SUBSTRUCTURE CONCRETE, AS SHOWN IN THE PLANS.

NOTES

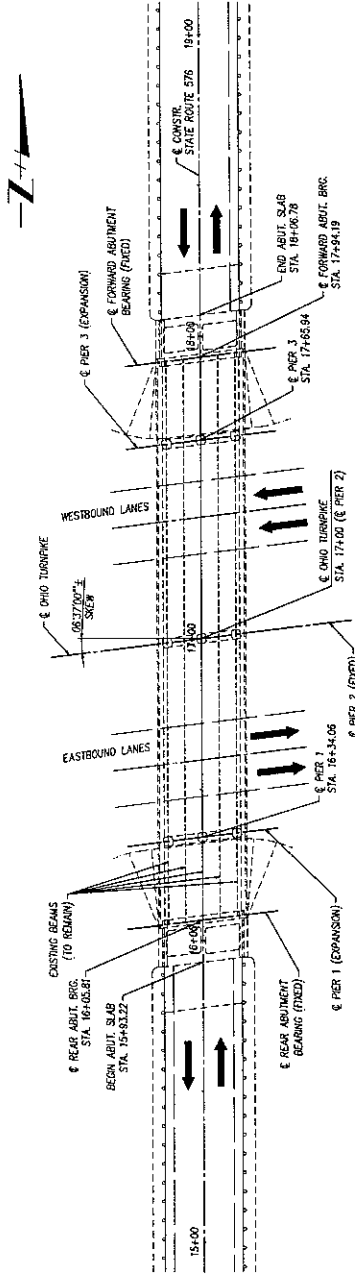
- THE PLAN SHOWN IS FROM THE ORIGINAL CONSTRUCTION & REHABILITATION
 PLANS. PLANS MAY NOT BE DRAWN TO SCALE AND IS FOR INFORMATION ONLY.
- THERE WAS A REPAIRING PROJECT UNDERWAY THAT WAS SUSPENDED
 AT THE REAR APPROACH SLAB AND RESUMED AFTER THE FORWARD APPROACH
 SLAB (OBSERVED 6/7/10).

NO.	CONCRETE QUANTITY ADJUSTMENT	NBL	10/03/12	BY	DATE
1	REVISIONS				

OHIO TURNPIKE COMMISSION	
GENERAL PLAN AND PROFILE	
MP 10.20 - STATE ROUTE 576	
OVER OHIO TURNPIKE	

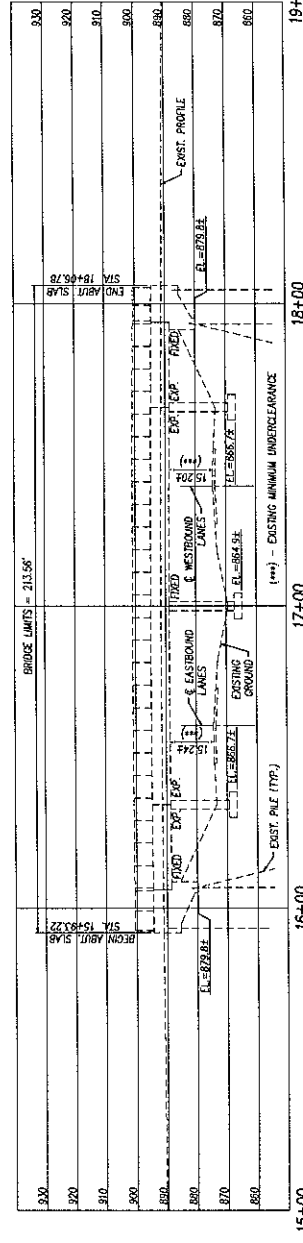
DGL	
DGL CONSULTING ENGINEERS, LLC	
3455 Bartlett Blvd. Suite E	
Hermosa Beach, CA 92643	
Phone: 949.433.1000 Fax: 949.433.1429	
E-MAIL: info@dgl.com	
DESIGNED BY	10/03/12
CHECKED BY	10/03/12
IN CHARGE	ASH SCALE AS SHOWN

CONTRACT 43-12-03 SHEET 40 OF 69

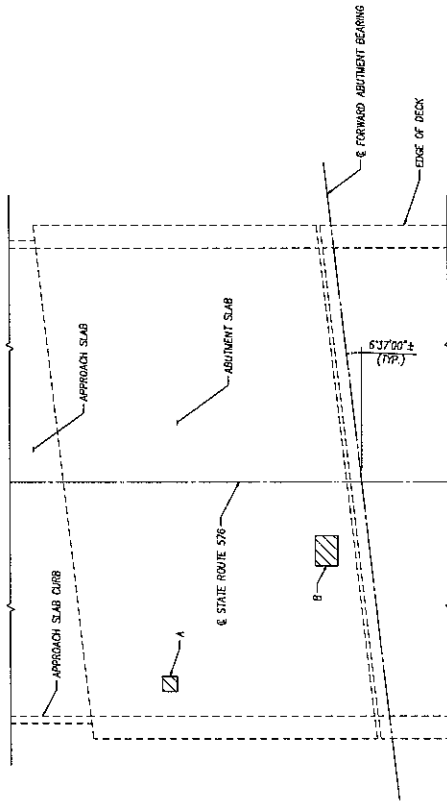


GENERAL PLAN

ITEM	TOTAL	UNIT	DESCRIPTION
SP 203	1000	LINEAL FEET	FOUR SPANS OF STRUCTURE REHABILITATED
SP 204	1000	LINEAL FEET	FOUR SPANS OF STRUCTURE REHABILITATED
SP 205	1000	LINEAL FEET	FOUR SPANS OF STRUCTURE REHABILITATED
SP 206	1000	LINEAL FEET	FOUR SPANS OF STRUCTURE REHABILITATED
SP 207	1000	LINEAL FEET	FOUR SPANS OF STRUCTURE REHABILITATED
SP 208	1000	LINEAL FEET	FOUR SPANS OF STRUCTURE REHABILITATED
SP 209	1000	LINEAL FEET	FOUR SPANS OF STRUCTURE REHABILITATED
SP 210	1000	LINEAL FEET	FOUR SPANS OF STRUCTURE REHABILITATED
SP 211	1000	LINEAL FEET	FOUR SPANS OF STRUCTURE REHABILITATED
SP 212	1000	LINEAL FEET	FOUR SPANS OF STRUCTURE REHABILITATED
SP 213	1000	LINEAL FEET	FOUR SPANS OF STRUCTURE REHABILITATED
SP 214	1000	LINEAL FEET	FOUR SPANS OF STRUCTURE REHABILITATED
SP 215	1000	LINEAL FEET	FOUR SPANS OF STRUCTURE REHABILITATED
SP 216	1000	LINEAL FEET	FOUR SPANS OF STRUCTURE REHABILITATED
SP 217	1000	LINEAL FEET	FOUR SPANS OF STRUCTURE REHABILITATED
SP 218	1000	LINEAL FEET	FOUR SPANS OF STRUCTURE REHABILITATED
SP 219	1000	LINEAL FEET	FOUR SPANS OF STRUCTURE REHABILITATED
SP 220	1000	LINEAL FEET	FOUR SPANS OF STRUCTURE REHABILITATED
SP 221	1000	LINEAL FEET	FOUR SPANS OF STRUCTURE REHABILITATED
SP 222	1000	LINEAL FEET	FOUR SPANS OF STRUCTURE REHABILITATED
SP 223	1000	LINEAL FEET	FOUR SPANS OF STRUCTURE REHABILITATED
SP 224	1000	LINEAL FEET	FOUR SPANS OF STRUCTURE REHABILITATED
SP 225	1000	LINEAL FEET	FOUR SPANS OF STRUCTURE REHABILITATED
SP 226	1000	LINEAL FEET	FOUR SPANS OF STRUCTURE REHABILITATED
SP 227	1000	LINEAL FEET	FOUR SPANS OF STRUCTURE REHABILITATED
SP 228	1000	LINEAL FEET	FOUR SPANS OF STRUCTURE REHABILITATED
SP 229	1000	LINEAL FEET	FOUR SPANS OF STRUCTURE REHABILITATED
SP 230	1000	LINEAL FEET	FOUR SPANS OF STRUCTURE REHABILITATED
SP 231	1000	LINEAL FEET	FOUR SPANS OF STRUCTURE REHABILITATED
SP 232	1000	LINEAL FEET	FOUR SPANS OF STRUCTURE REHABILITATED
SP 233	1000	LINEAL FEET	FOUR SPANS OF STRUCTURE REHABILITATED
SP 234	1000	LINEAL FEET	FOUR SPANS OF STRUCTURE REHABILITATED
SP 235	1000	LINEAL FEET	FOUR SPANS OF STRUCTURE REHABILITATED
SP 236	1000	LINEAL FEET	FOUR SPANS OF STRUCTURE REHABILITATED
SP 237	1000	LINEAL FEET	FOUR SPANS OF STRUCTURE REHABILITATED
SP 238	1000	LINEAL FEET	FOUR SPANS OF STRUCTURE REHABILITATED
SP 239	1000	LINEAL FEET	FOUR SPANS OF STRUCTURE REHABILITATED
SP 240	1000	LINEAL FEET	FOUR SPANS OF STRUCTURE REHABILITATED
SP 241	1000	LINEAL FEET	FOUR SPANS OF STRUCTURE REHABILITATED
SP 242	1000	LINEAL FEET	FOUR SPANS OF STRUCTURE REHABILITATED
SP 243	1000	LINEAL FEET	FOUR SPANS OF STRUCTURE REHABILITATED
SP 244	1000	LINEAL FEET	FOUR SPANS OF STRUCTURE REHABILITATED
SP 245	1000	LINEAL FEET	FOUR SPANS OF STRUCTURE REHABILITATED
SP 246	1000	LINEAL FEET	FOUR SPANS OF STRUCTURE REHABILITATED
SP 247	1000	LINEAL FEET	FOUR SPANS OF STRUCTURE REHABILITATED
SP 248	1000	LINEAL FEET	FOUR SPANS OF STRUCTURE REHABILITATED
SP 249	1000	LINEAL FEET	FOUR SPANS OF STRUCTURE REHABILITATED
SP 250	1000	LINEAL FEET	FOUR SPANS OF STRUCTURE REHABILITATED
SP 251	1000	LINEAL FEET	FOUR SPANS OF STRUCTURE REHABILITATED
SP 252	1000	LINEAL FEET	FOUR SPANS OF STRUCTURE REHABILITATED
SP 253	1000	LINEAL FEET	FOUR SPANS OF STRUCTURE REHABILITATED
SP 254	1000	LINEAL FEET	FOUR SPANS OF STRUCTURE REHABILITATED
SP 255	1000	LINEAL FEET	FOUR SPANS OF STRUCTURE REHABILITATED
SP 256	1000	LINEAL FEET	FOUR SPANS OF STRUCTURE REHABILITATED
SP 257	1000	LINEAL FEET	FOUR SPANS OF STRUCTURE REHABILITATED
SP 258	1000	LINEAL FEET	FOUR SPANS OF STRUCTURE REHABILITATED
SP 259	1000	LINEAL FEET	FOUR SPANS OF STRUCTURE REHABILITATED
SP 260	1000	LINEAL FEET	FOUR SPANS OF STRUCTURE REHABILITATED
SP 261	1000	LINEAL FEET	FOUR SPANS OF STRUCTURE REHABILITATED
SP 262	1000	LINEAL FEET	FOUR SPANS OF STRUCTURE REHABILITATED
SP 263	1000	LINEAL FEET	FOUR SPANS OF STRUCTURE REHABILITATED
SP 264	1000	LINEAL FEET	FOUR SPANS OF STRUCTURE REHABILITATED
SP 265	1000	LINEAL FEET	FOUR SPANS OF STRUCTURE REHABILITATED
SP 266	1000	LINEAL FEET	FOUR SPANS OF STRUCTURE REHABILITATED
SP 267	1000	LINEAL FEET	FOUR SPANS OF STRUCTURE REHABILITATED
SP 268	1000	LINEAL FEET	FOUR SPANS OF STRUCTURE REHABILITATED
SP 269	1000	LINEAL FEET	FOUR SPANS OF STRUCTURE REHABILITATED
SP 270	1000	LINEAL FEET	FOUR SPANS OF STRUCTURE REHABILITATED
SP 271	1000	LINEAL FEET	FOUR SPANS OF STRUCTURE REHABILITATED
SP 272	1000	LINEAL FEET	FOUR SPANS OF STRUCTURE REHABILITATED
SP 273	1000	LINEAL FEET	FOUR SPANS OF STRUCTURE REHABILITATED
SP 274	1000	LINEAL FEET	FOUR SPANS OF STRUCTURE REHABILITATED
SP 275	1000	LINEAL FEET	FOUR SPANS OF STRUCTURE REHABILITATED
SP 276	1000	LINEAL FEET	FOUR SPANS OF STRUCTURE REHABILITATED
SP 277	1000	LINEAL FEET	FOUR SPANS OF STRUCTURE REHABILITATED
SP 278	1000	LINEAL FEET	FOUR SPANS OF STRUCTURE REHABILITATED
SP 279	1000	LINEAL FEET	FOUR SPANS OF STRUCTURE REHABILITATED
SP 280	1000	LINEAL FEET	FOUR SPANS OF STRUCTURE REHABILITATED
SP 281	1000	LINEAL FEET	FOUR SPANS OF STRUCTURE REHABILITATED
SP 282	1000	LINEAL FEET	FOUR SPANS OF STRUCTURE REHABILITATED
SP 283	1000	LINEAL FEET	FOUR SPANS OF STRUCTURE REHABILITATED
SP 284	1000	LINEAL FEET	FOUR SPANS OF STRUCTURE REHABILITATED
SP 285	1000	LINEAL FEET	FOUR SPANS OF STRUCTURE REHABILITATED
SP 286	1000	LINEAL FEET	FOUR SPANS OF STRUCTURE REHABILITATED
SP 287	1000	LINEAL FEET	FOUR SPANS OF STRUCTURE REHABILITATED
SP 288	1000	LINEAL FEET	FOUR SPANS OF STRUCTURE REHABILITATED
SP 289	1000	LINEAL FEET	FOUR SPANS OF STRUCTURE REHABILITATED
SP 290	1000	LINEAL FEET	FOUR SPANS OF STRUCTURE REHABILITATED
SP 291	1000	LINEAL FEET	FOUR SPANS OF STRUCTURE REHABILITATED
SP 292	1000	LINEAL FEET	FOUR SPANS OF STRUCTURE REHABILITATED
SP 293	1000	LINEAL FEET	FOUR SPANS OF STRUCTURE REHABILITATED
SP 294	1000	LINEAL FEET	FOUR SPANS OF STRUCTURE REHABILITATED
SP 295	1000	LINEAL FEET	FOUR SPANS OF STRUCTURE REHABILITATED
SP 296	1000	LINEAL FEET	FOUR SPANS OF STRUCTURE REHABILITATED
SP 297	1000	LINEAL FEET	FOUR SPANS OF STRUCTURE REHABILITATED
SP 298	1000	LINEAL FEET	FOUR SPANS OF STRUCTURE REHABILITATED
SP 299	1000	LINEAL FEET	FOUR SPANS OF STRUCTURE REHABILITATED
SP 300	1000	LINEAL FEET	FOUR SPANS OF STRUCTURE REHABILITATED



PROFILE ALONG CENTERLINE CONSTRUCTION



MP 10.20 ABUTMENT SLAB REPAIR DETAILS

PATCHING ABUTMENT SLAB CONCRETE	
CONCRETE PATCH ID	AREA (SQ. FT.)
A	1.0
B	3.0
SUB-TOTAL	4.0
TOTALS CARRIED TO SHEET 63/69	5

NOTES & LEGEND

- THE ABUTMENT SLAB UNITS SHOWN ARE TO BE REPAIRED USING THE APPROACH SLAB MATERIALS SPECIFIED BY SP 619 AND SEALED PER SP 536. SEE GENERAL NOTES ON SHEET 18 OF 69.

▨ - INDICATES APPROXIMATE CONCRETE PATCHING LIMITS

FULL DEPTH CLASS 5 CONCRETE (SP 533M)				
LOCATION	APPROX. SIZE (FEET)	QUANTITY	AREA (SQ. FT.)	VOLUME (CU. YD.)
R.A. COMPRESSION SEAL (SUBSTRUCTURE SIZE)	1.00x3.4'	1	3.4	3.4
R.A. COMPRESSION SEAL (SUPERSTRUCTURE SIZE)	0.83x3.4'	1	2.82	2.82
TOTAL			6.49	6.22
TOTAL VOLUME				3

A

1	CONCRETE QUANTITY ADJUSTMENT	NBL	10/12/12
2	REVISIONS	BY	DATE

OHIO TURNPIKE COMMISSION

ABUTMENT SLAB REPAIR DETAILS

MP 10.20 - STATE ROUTE 576 OVER OHIO TURNPIKE

DGL CONSULTING ENGINEERS, LLC
 3455 Briarfield Blvd., Suite E
 Marietta, OH 45757
 Ph: 419.353.1010 Fax: 419.353.1425

DESIGNED BY: DGL
 CHECKED BY: DGL
 DATE: 10/12/12
 SCALE: AS SHOWN

CONTRACT 43-12-03 SHEET 42 OF 69

TYPE: 3 SPAN CONTINUOUS COMPOSITE STEEL BEAMS WITH REINFORCED CONCRETE DECK, CELLULAR REINFORCED CONCRETE ABUTMENTS, CAP AND COLUMN TYPE PIERS.

SPANS: 28'-6"±, 41'-9"±, 28'-6"± & BEARINGS

ROADWAY: 42'-9"± TOE/TOE OF PARAPETS

TYPE: 3 SPAN CONTINUOUS COMPOSITE STEEL BEAMS WITH
REINFORCED CONCRETE DECK, COLLUMINAR REINFORCED
CONCRETE ABUTMENTS, CAP AND COLUMN TYPE PIERS.
SPANS: 28'-0", 41'-0", 41'-0"; 28'-6" x 6' BEARINGS
ABUTMENT: 42'-9" x 102'-0" x PARAPETS
NEW: 10'-0" x 10'-0" x 10'-0" TIGHT FORWARD
WEARING SURFACE: 1' MONOTONIC CONCRETE
APPROACH SLABS: 15' x LONG, 15'-0" x CELLULAR ABUTMENT SLAB
ALIGNMENT: TANGENT
REHABILITATION 1954 (REHABILITATION 1990)
SPN: 8601232
OTC WLEP03: 13.20 (RAMP)
GRADE COORDINATES: 41'-50.47' LAT., 84'-33'18" LONG.

 $\overline{ADT(2011)} = 6890$

PROPOSED REHABILITATION SCOPE OF WORK:

STATE ROUTE 15 OVER OHIO TURNPIKE RAMP M.P. 13.20

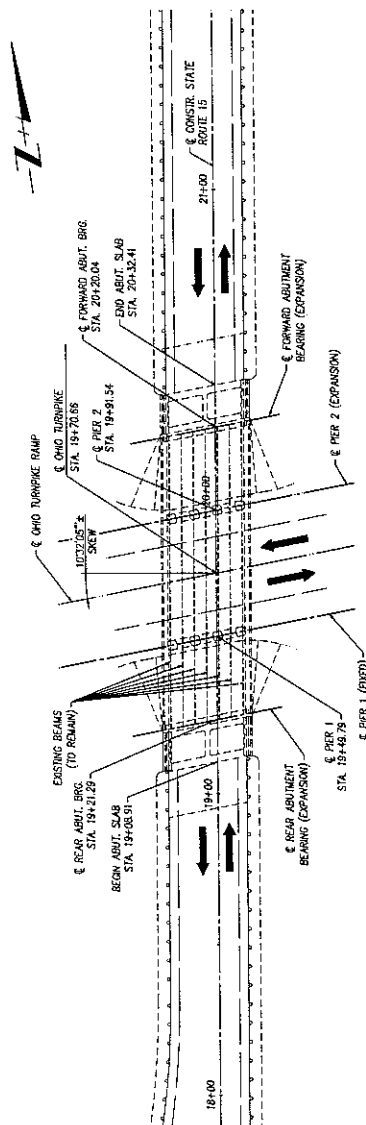
PATCH ALL AREAS OF UNSOUND CONCRETE (ABUTMENTS, DECK AND PIERS).

COVER AND ALL ADJUTANT AND GIER BEARINGS WITH ELASTOMERIC BEARINGS. SEE SHEETS 66-69.

REMOVE AND REPLACE BOTH STRIP SEAL JOINTS WITH NEW STEEL ARMOR AND SEALS PER SP 533H.

[illegible][illegible]

- THE PLAN SHOWN IS FROM THE ORIGINAL CONSTRUCTION & REHABILITATION PLANS MAY NOT BE DRAWN TO SCALE AND IS FOR INFORMATION ONLY.



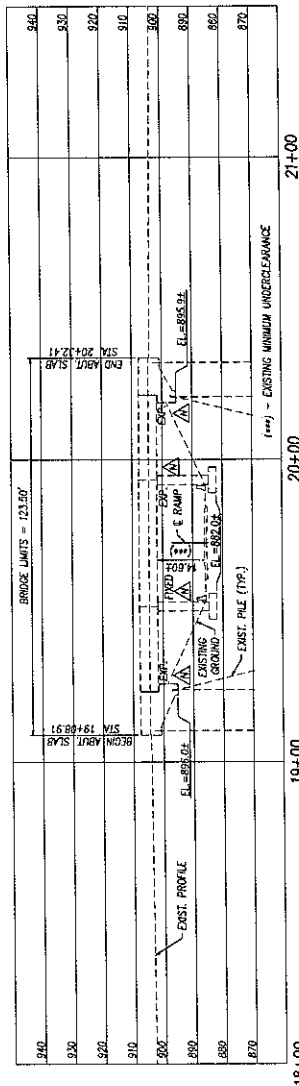
GENERAL PLAN

[illegible]

1. The first part of the document is a title page. It contains the title "The Role of the Teacher in the Classroom" and the author's name "John Doe".

(4) - CONTINGENCY QUANTITY TO BE USED AT THE DIRECTION OF THE ENGINEER

A - NEW BASTIONIC READINGS (BELOW EXISTING) SEE SHEET 66 FOR ADDITIONAL DETAILS



(i) Existing Minimum Underclearance

PROFILE ALONG CENTERLINE CONSTRUCTION

1	CONCRETE QUANTITY ADJUSTMENT	NBL	10.10.12
	REVISIONS	BY	DATE

OHIO TURNPIKE COMMISSION

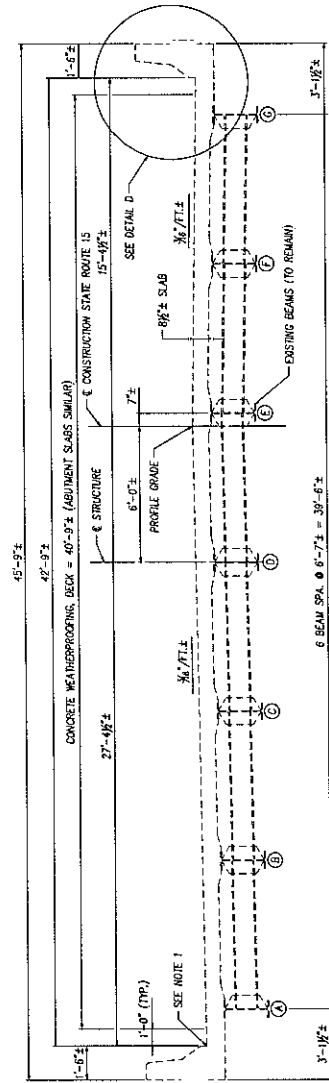
GENERAL PLAN AND PROFILE
MP 13.20 (RAMP) - STATE ROUTE 15
OVER OHIO TURNPIKE RAMP



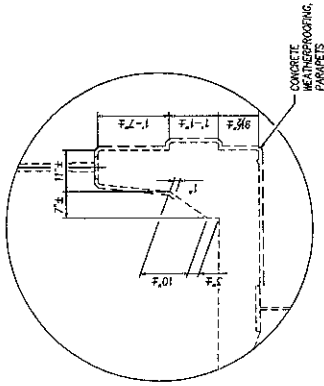
DOGL CONSULTING ENGINEERS, LLC
3455 Briarfield Blvd., Suite E
Columbus, OH 43237
Tel 614.535.1015 • Fax 614.535.1429

DESIGNED: NBL	CHECKED: ALH	DATE: 6/11/12
---------------	--------------	---------------

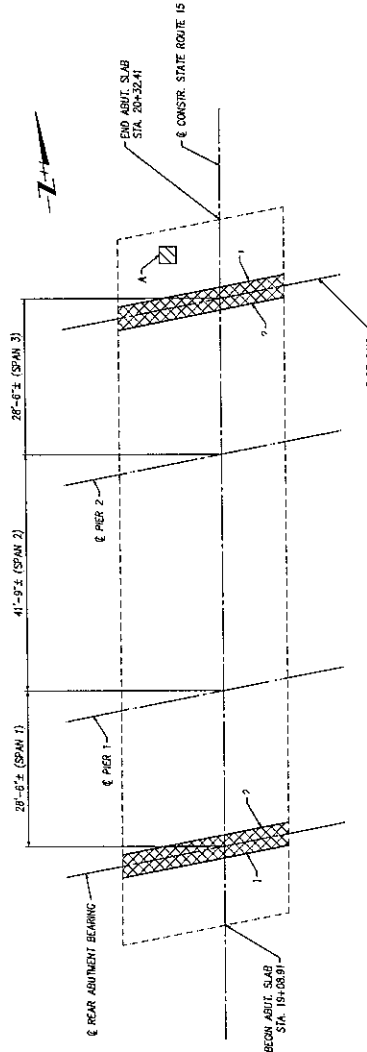
DRAWING	NBS	IN CHARGE	REV	DATE
CONTRACT 13-12-03 SHEET 53 OF 69				



TRANSVERSE BRIDGE SECTION
(LOOKING UPSTATION)



DETAIL D
TYPICAL BOTH PARAPETS



STATE ROUTE 15 OVER OHIO TURNPIKE RAMP - BRIDGE SLAB PLAN
APPROXIMATE AREAS OF FULL DEPTH OVERLAY

PATCHING ABUTMENT SLAB CONCRETE	
CONCRETE PATCH ID	AREA (SQ. FT.)
A	4.0
SUB-TOTAL	4.0
TOTALS CARRIED TO SHEET 63/69	

FULL DEPTH CLASS S. CONCRETE (SP 533H)			
LOCATION	APPROX. SIZE (FEET)	QUANTITY (CY)	VOLUME (CU. YD.)
1	1.08x1.7	2	101.5
2	0.83x1.7	3	78.0
			71.5
TOTAL			179.5
TOTAL VOLUME			181.5

NOTES & LEGEND

- ALL CONSTRUCTION JOINTS SHALL BE SEALED WITH AN APPROVED HIGH MOLECULAR WEIGHT METHACRYLATE SEALER IN ACCORDANCE WITH SP 516B FOR THE DECK AND ABUTMENT SLAB.
- EXACT LOCATIONS AND DIMENSIONS OF PATCHES SHALL BE DETERMINED BY THE ENGINEER IN THE FIELD FOR FINAL PAY QUANTITY.
- NOT MORE THAN 5% OF THE SPAN AREA OF THE OVERLAY SHALL BE PATCHES USING THE METHACRYLATE SEALER SPECIFIED BY SP 516 AND SEALED PER SP 533. SEE GENERAL NOTES ON SHEET 13 OF 63.
- SEE NOTE 11 ON GENERAL NOTES (SHEET 17) FOR LIMITS OF CONCRETE WEATHERPROOFING.

- NOTE: NO LONGER APPLIES
- INDICATES APPROXIMATE CONCRETE PATCHING LIMITS
- AREA OF FULL DEPTH REPAIR AND JOINT ARMOR REPLACEMENT. SEE SHEET 65 FOR TYP. SP 533X DETAILS

OHIO TURNPIKE COMMISSION	
SUPERSTRUCTURE DETAILS	
MP 13.20 (RAMP) - STATE ROUTE 15 OVER OHIO TURNPIKE RAMP	
DGL CONSULTING ENGINEERS, LLC	
3445 Bitterfield Blvd. Suite E	
Mentor, OH 44137	
DESIGNED BY	DATE
CHECKED BY	DATE
IN CHARGE	DATE
BY	DATE
NO.	REVISIONS
1	CONCRETE QUANTITY ADJUSTMENT
10/13/12	BY

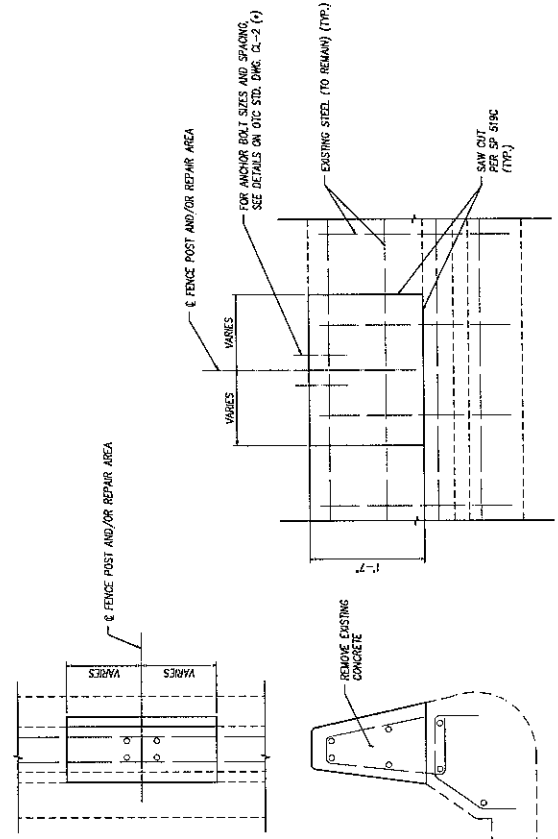
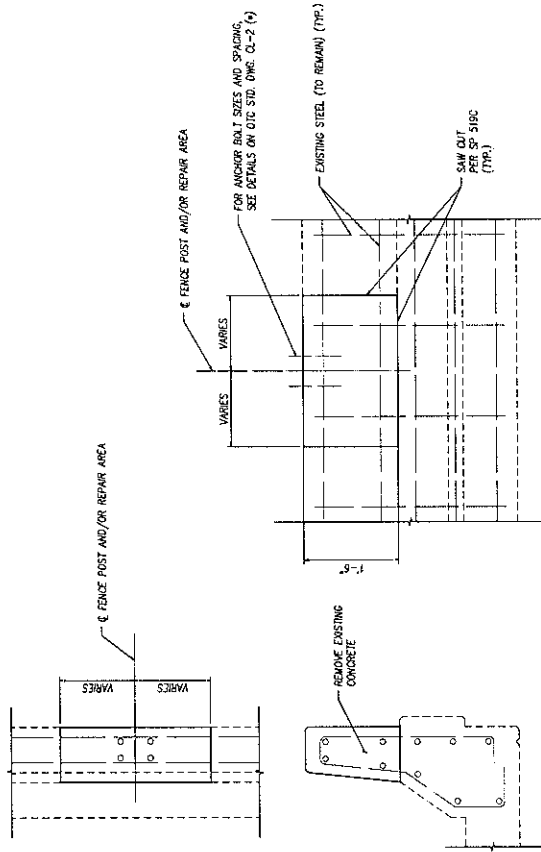
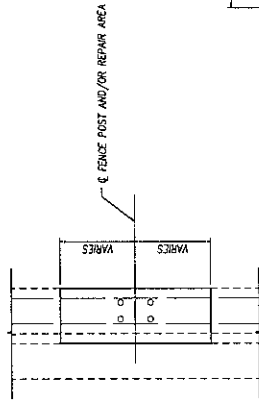
CONTRACT 43-12-03 SHEET 55 OF 69

SP 519 PATCHING CONCRETE STRUCTURE

	MP 3 10	MP 4 10	MP 5 10	MP 6 00	MP 7 10	MP 8 00	MP 9 00	MP 10 00	MP 11 00	MP 12 10	MP 13 20	MP 13 30	MP 13 40	MP 15 10
	SQ. FT.	SQ. FT.	SQ. FT.	SQ. FT.	SQ. FT.	SQ. FT.	SQ. FT.	SQ. FT.	SQ. FT.	SQ. FT.	SQ. FT.	SQ. FT.	SQ. FT.	SQ. FT.
PROVIDE SHEET NO.	27	34	37	30	36	33	39	N/A	42	N/A	50	N/A	58	N/A
PATCHING CONCRETE (PARAPETS)	45	165	165	70	270	270	10	N/A	22	N/A	110	N/A	N/A	N/A
PROVIDE SHEET NO.	20	23	28	29	35	35	41	44	47	49	54	57	62	67
PATCHING CONCRETE (SUBSTRUCTURE)	25	40	70	40	25	20	20	85	105	150	N/A	200	200	35
PROVIDE SHEET NO.	N/A	N/A	N/A	N/A	N/A	N/A	N/A	N/A	N/A	N/A	N/A	N/A	N/A	N/A
PATCHING CONCRETE (SUBSTRUCTURE)	N/A	N/A	N/A	N/A	N/A	N/A	N/A	N/A	N/A	N/A	N/A	N/A	N/A	N/A
SUB TOTAL	110	105	235	45	195	115	30	110	99	110	160	55	205	35
TOTAL	110	105	235	45	195	115	30	110	99	110	160	55	205	35
SHEET	18	32	20	28	31	34	72	40	43	45	48	53	56	67

SP 519C CONCRETE PARAPET REPAIRS

	MP 3 10	MP 4 10	MP 5 10	MP 6 00	MP 7 10	MP 8 00	MP 9 00	MP 10 00	MP 11 00	MP 12 10	MP 13 20	MP 13 30	MP 13 40	MP 15 10
	EA	EA	EA	EA	EA	EA	EA	EA	EA	EA	EA	EA	EA	EA
PROVIDE SHEET NO.	27	34	37	30	36	33	39	N/A	42	N/A	50	N/A	58	N/A
CONCRETE REPAIR LOCATIONS	16	12	12	5	34	34	21	31	31	31	31	31	45	57
TOTAL	16	12	12	5	34	34	21	31	31	31	31	31	45	57
SHEET	18	32	20	28	31	34	72	40	43	45	48	53	56	67



CONCRETE PARAPET REPAIR DETAIL @ FENCE POST LOCATIONS

(PARAPET TYPE VALID FOR MP: 6.00, 9.00, 10.20, 12.10, 13.20, 13.20 (RAMP), 13.40 & 15.10 STRUCTURES(+/-); NOT TO SCALE)

CONCRETE PARAPET REPAIR DETAIL @ FENCE POST LOCATIONS

(PARAPET TYPE VALID FOR MP: 3.10, 4.10, 5.10, 6.30, 7.70 & 11.60 STRUCTURES(+/-); NOT TO SCALE)

- CONTRACTOR SHALL SAW CUT PERIMETER OF AREA TO BE REPAIRED.
- MINIMUM SAW CUT DEPTH SHALL BE 12" UNLESS OTHERWISE SPECIFIED. ALL EXISTING REPAIR ANY REPAIR DAMAGED OR DESTROYED SHALL BE REPAIRED AT NO ADDITIONAL COST TO THE COMMISSION. APPLY EPOXY TOUCH UP TO REPAIR AS REQUIRED.
- PLACE NEW ANCHOR BOLTS IN ACCORDANCE WITH DETAILS ON OTC STANDARD DRAWING C-2. INCLUDE WITH ITEM SP 507A FOR PAYMENT.
- REPAIR CONCRETE WITH SP 519C.
- AFTER CONCRETE REPAIR IS CURED, APPLY CONCRETE WEATHERPROOFING IN ACCORDANCE WITH SP 536.

- CONTRACTOR SHALL SAW CUT PERIMETER OF AREA TO BE REPAIRED.
- MINIMUM SAW CUT DEPTH SHALL BE 12" UNLESS OTHERWISE SPECIFIED. ALL EXISTING REPAIR ANY REPAIR DAMAGED OR DESTROYED SHALL BE REPAIRED AT NO ADDITIONAL COST TO THE COMMISSION. APPLY EPOXY TOUCH UP TO REPAIR AS REQUIRED.
- PLACE NEW ANCHOR BOLTS IN ACCORDANCE WITH DETAILS ON OTC STANDARD DRAWING C-2. INCLUDE WITH ITEM SP 507A FOR PAYMENT.
- REPAIR CONCRETE WITH SP 519C.
- AFTER CONCRETE REPAIR IS CURED, APPLY CONCRETE WEATHERPROOFING IN ACCORDANCE WITH SP 536.

NOTES:

- CONTRACTOR SHALL SAW CUT PERIMETER OF AREA TO BE REPAIRED.
- MINIMUM SAW CUT DEPTH SHALL BE 12" UNLESS OTHERWISE SPECIFIED. ALL EXISTING REPAIR ANY REPAIR DAMAGED OR DESTROYED SHALL BE REPAIRED AT NO ADDITIONAL COST TO THE COMMISSION. APPLY EPOXY TOUCH UP TO REPAIR AS REQUIRED.
- PLACE NEW ANCHOR BOLTS IN ACCORDANCE WITH DETAILS ON OTC STANDARD DRAWING C-2. INCLUDE WITH ITEM SP 507A FOR PAYMENT.
- REPAIR CONCRETE WITH SP 519C.
- AFTER CONCRETE REPAIR IS CURED, APPLY CONCRETE WEATHERPROOFING IN ACCORDANCE WITH SP 536.

NO.	CONCRETE QUANTITY ADJUSTMENT	NR.	BY	DATE
1				10/10/12

OHIO TURNPIKE COMMISSION
EXISTING PARAPET REPAIR
DETAILS AND PATCHING TABLE

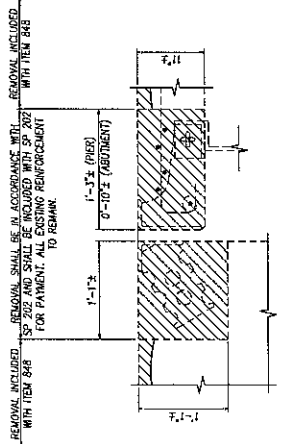


DGL CONSULTING ENGINEERS, LLC
3455 Briarfield Blvd., Suite E
Mentor, OH 44137
PH: 440.333.4428
FAX: 440.333.4429
WWW.DGL-ENGINEERS.COM

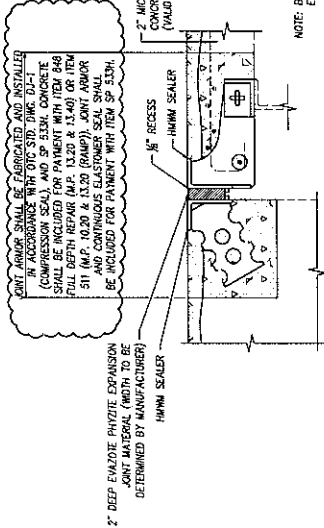
CONTRACT 43-12-03, SHEET 63 OF 69

THIS SHEET PERTAINS TO ALL STRUCTURES

REMOVAL SHALL BE IN ACCORDANCE WITH SP 202 AND SHALL BE INCLUDED WITH SP 202 FOR PAYMENT. ALL EXISTING REINFORCEMENT TO REMAIN.

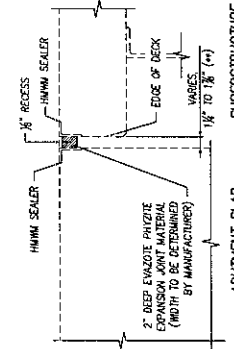


ABUTMENT SLAB
(ALL EXISTING REIN. NOT SHOWN)
ITEM SP 533H - CONTINUOUS ELASTOMER SEAL IN STRUCTURAL STEEL JOINT - REMOVAL DETAIL
(ABUTMENT SHOWN, PER SIMILAR)

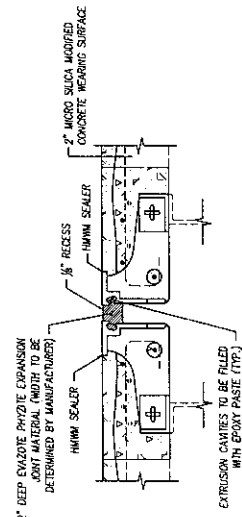


ABUTMENT SLAB
(ALL EXISTING REIN. NOT SHOWN)
ITEM SP 533H - CONTINUOUS ELASTOMER SEAL IN STRUCTURAL STEEL JOINT - JOINT DETAIL
(ABUTMENT SHOWN, PER SIMILAR)

NOTE: BUILD UPDOWN CURB TO EDGE OF NEW JOINT STEEL



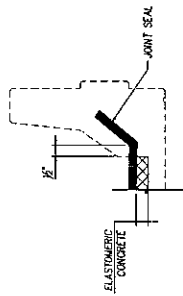
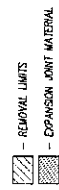
ABUTMENT SLAB
(ALL EXISTING REIN. NOT SHOWN)
ITEM SP 533E - CONTINUOUS ELASTOMER SEAL COMPRESSION JOINT DETAIL



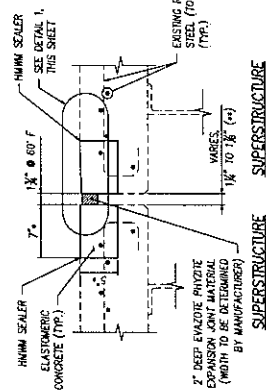
ITEM SP 533E - REPLACEMENT OF STRIP SEAL WITH CONTINUOUS ELASTOMER SEAL - JOINT DETAIL

NOTES & LEGEND

- CONTRACTOR IS TO FIELD VERIFY JOINT OPENING DIMENSION (WITH TEMPERATURE AT MEASUREMENT) AT A SUFFICIENT NUMBER OF LOCATIONS ALONG ITS LENGTH SO THAT THE JOINT MANUFACTURER CAN PROPERLY DESIGN THE JOINT.
- TRIM BEAM ENDS AS NECESSARY AND AS DIRECTED / APPROVED BY THE ENGINEER. INCLUDE WITH ITEM SP 202 FOR PAYMENT.

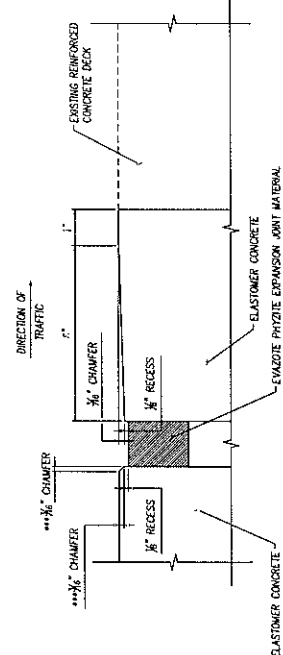


ITEM SP 533E - CONTINUOUS ELASTOMER SEAL
(DETAIL AT PARAPET, CONTRACTOR TO SAW OUT DECK 1/2\"/>



ITEM SP 533E - CONTINUOUS ELASTOMER SEAL EXPANSION JOINT DETAIL

*** CONTRACTOR SHALL BRIDGE EXISTING EXPANSION JOINT MATERIAL TO A MINIMUM OF THE DIMENSIONS SHOWN BUT IN ALL CASES TO SOUND CONCRETE MATERIAL.



DETAIL 1

*** - CONTRACTOR MAY ROUND CORNER TO BREAK SHARP EDGE FOR CHAMFER

NO.	CONCRETE QUANTITY ADJUSTMENT	REVISIONS	DATE
1			

JOINT DETAILS

ITEM SP 533H - CONTINUOUS ELASTOMER SEAL IN STRUCTURAL STEEL JOINT - REMOVAL DETAIL
(DETAIL AT PARAPET)



DGL CONSULTING ENGINEERS, LLC
3455 Briarfield Blvd., Suite 1
Mentor, OH 44037
Ph: 419.535.1010 Fax: 419.535.1429

DESIGNED: NDL
CHECKED: NDL
DATE: 6/26/12
CONTRACT 43-12-03 SHEET 65 OF 69

THIS SHEET PERTAINS TO ALL STRUCTURES