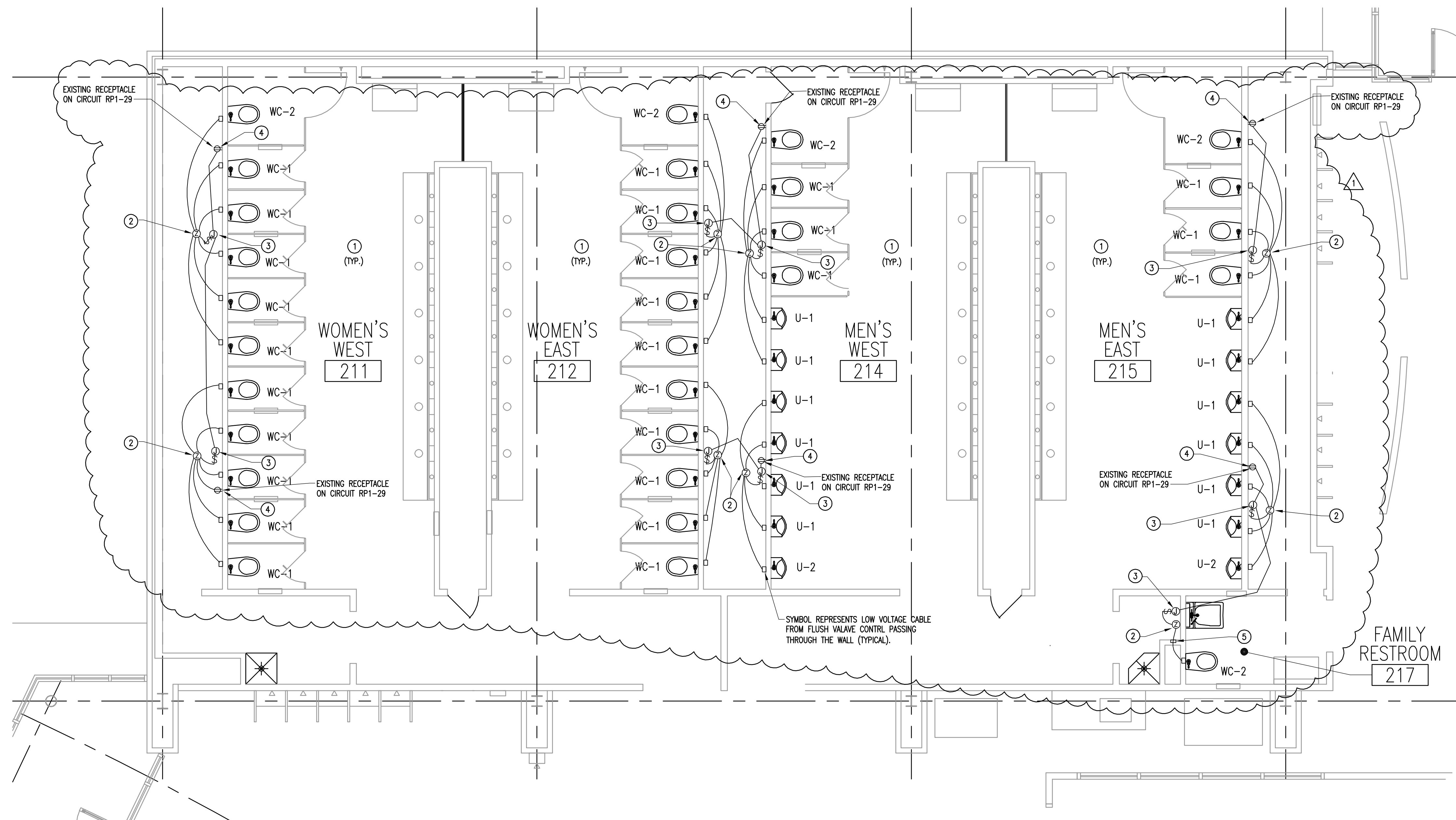
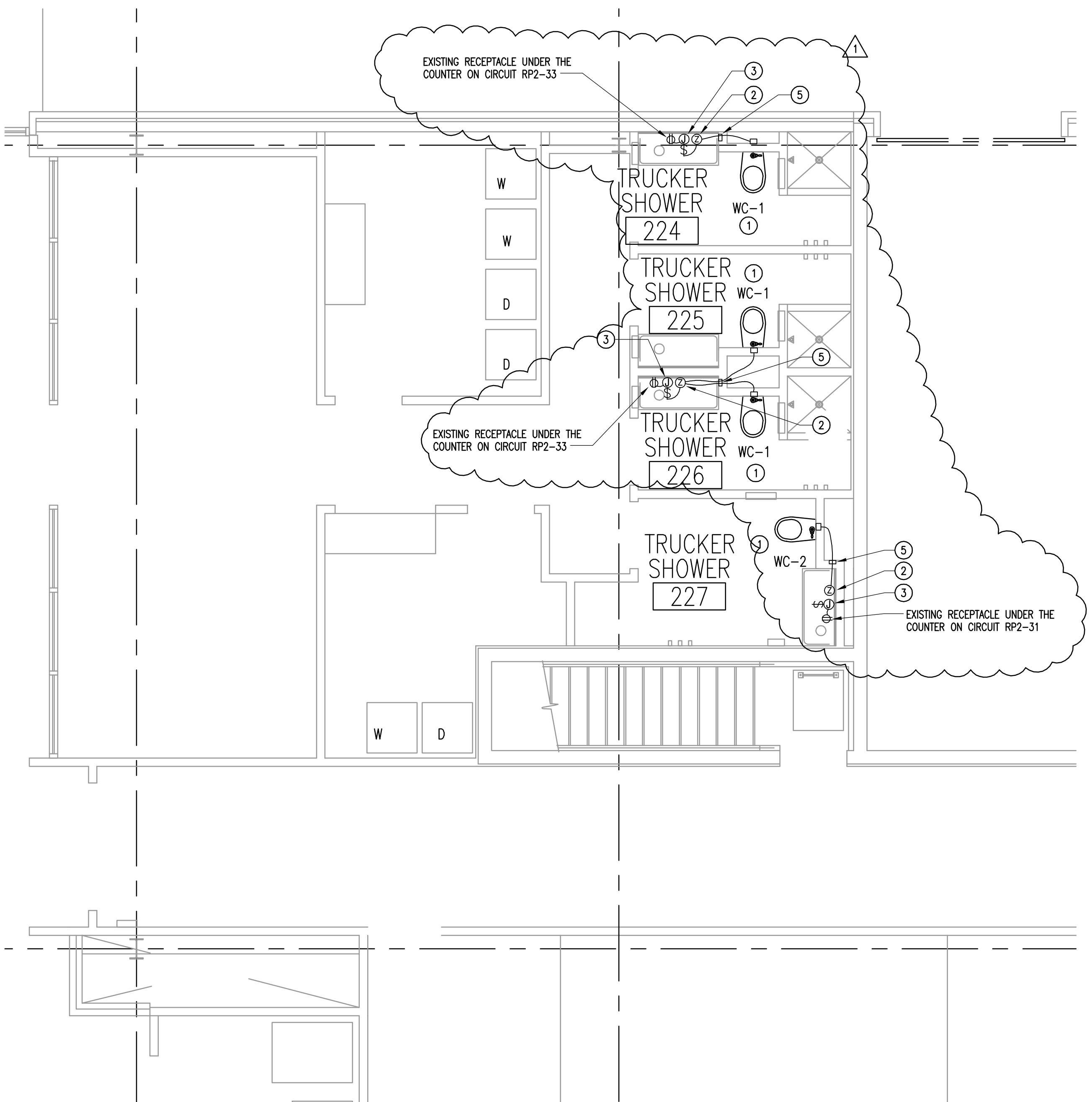




FIRST FLOOR POWER & COMMUNICATIONS PLAN



A EXISTING WOMEN'S AND MEN'S (WEST/EAST) & FAMILY/UNISEX RESTROOM PLAN
E3.1 SCALE: 1/4" = 1'-0"



B EXISTING TRUCKER TOILET/SHOWER ROOMS PLAN
E3.1 SCALE: 1/4" = 1'-0"

EXISTING PLUMBING FIXTURE EQUIPMENT LIST:

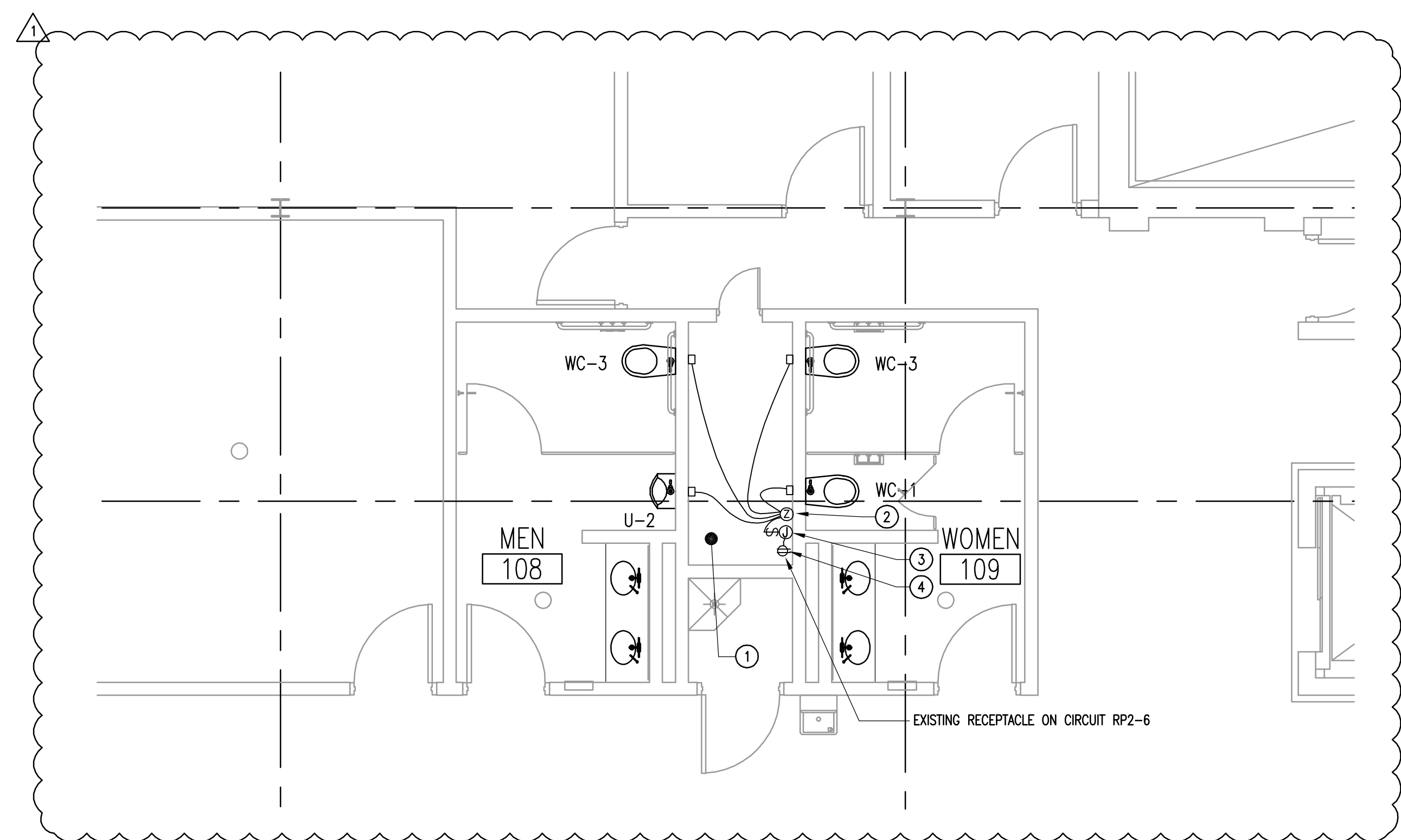
- WC-1** KOHLER "KINGSTON" MODEL NO. K-4330, ELONGATED, WALL HUNG VITREOUS CHINA WATER CLOSET. ZURN MODEL NO. ZR6000XL-WS1 SENSOR OPERATED, BATTERY-POWERED FLUSH VALVE. CHURCH MODEL NO. 9500C WHITE OPEN FRONT TOILET SEAT WITH SELF-SUSTAINING CHECK HINGE. W/ JAY R. SMITH #M40 WIDE PIPE CHASE BRACKETS.
- WC-2** SAME AS WC-1 EXCEPT RIM IS 17" AFF.
- WC-3** SAME AS WC-2 EXCEPT ZURN MODEL NO. Z-6000XL-WS1 FLUSH VALVE.
- U-1** KOHLER "BARDON SUPERIOR" MODEL NO. K-4960-ET WALL HUNG, VITREOUS CHINA URINAL. ZURN MODEL NO. ZR6003XL-WS1 SENSOR OPERATED, BATTERY-POWERED FLUSH VALVE.
- U-2** KOHLER "BARDON SUPERIOR" MODEL NO. K-4960-ET WALL HUNG, VITREOUS CHINA URINAL MOUNTED AT HANDICAPPED HEIGHT. ZURN MODEL NO. ZR6003XL-WS1 SENSOR OPERATED FLUSH VALVE.

PLUMBING NOTES:

- PROVIDE FOLLOWING PARTS TO CONVERT THE BATTERY OPERATED EXISTING WATER CLOSET FLUSH VALVE INTO A HARD-WIRED FLUSH VALVE:
- P6000-HYM-IS ACTUATOR WITH INTEGRAL SENSOR AND MANUAL PUSH-BUTTON OVERRIDE.
 - P6000-EDA-WS1-CS TRIPLE-FLEX DAPPHRACM.
 - P6000-HW6 HARD-WIRED POWER CONVERTER.
- PROVIDE FOLLOWING PARTS TO CONVERT THE BATTERY OPERATED EXISTING URINAL FLUSH VALVE INTO A HARD-WIRED FLUSH VALVE:
- P6000-HYM-IS ACTUATOR WITH INTEGRAL SENSOR AND MANUAL PUSH-BUTTON OVERRIDE.
 - P6000-EDA-WS1 DAPPHRACM.
 - P6000-HW6 HARD-WIRED POWER CONVERTER.
- PROVIDE ZURN #ZEMS6000AV-WS1-IS WATER CLOSET FLUSH VALVE AND ZURN #ZEMS6003AV-WS1-IS URINAL FLUSH VALVE WHERE FLUSH VALVE SHALL BE REPLACED (FIELD VERIFY).
- PROVIDE (4) EXTRA REPLACEMENT PART SETS FOR WATER CLOSET FLUSH VALVE AND (2) SETS FOR URINAL FLUSH VALVE FOR FUTURE OTC USED.

KEYED NOTES:

1. PROVIDE 120V POWER TO POWER NEW HARD-WIRED FLUSH VALVES.
2. ZURN P6000-HW6 POWER CONVERTER PROVIDES 7.6VDC LOW VOLTAGE POWER FOR UP TO EIGHT FLUSH VALVES FROM 120 VOLT SOURCE. POWER CONVERTER IS FURNISHED BY GENERAL CONTRACTOR, INSTALLED BY ELECTRICAL CONTRACTOR, INCLUDING LOW VOLTAGE CABLES. GENERAL CONTRACTOR WILL PROVIDE PIPE THROUGH THE WALL FOR LOW VOLTAGE CABLES. EC SHALL PROVIDE BOX TO CONTAIN ALL LOW VOLTAGE SPLICES (TYPICAL).
3. PROVIDE 120V COVERED OUTLET BOX ON WALL ADJACENT TO ZURN POWER CONVERTER. BOX SHALL HAVE DISCONNECT SNAP SWITCH IN COVER. PROVIDE LABEL ON COVER READING "FLUSH VALVE POWER". (TYPICAL). EC SHALL MAKE HARD-WIRED CONNECTION BETWEEN OUTLET BOX AND ZURN POWER CONVERTER.
4. EXISTING RECEPTACLE CONNECTED TO CIRCUIT AS SHOWN. EC SHALL EXTEND 120 VOLT CIRCUIT FROM EXISTING RECEPTACLE TO NEW 120 VOLT SWITCHED OUTLET BOXES FOR ZURN POWER CONVERTERS. PROVIDE A BOX EXTENSION ON EXISTING RECEPTACLE BOX TO ACCOMMODATE CONNECTION TO EXISTING RECEPTACLE CIRCUIT.
5. EC SHALL FISH LOW VOLTAGE CABLES THROUGH THE PLUMBING CHASE IN OPEN FASHION. EC SHALL PROVIDE A MASONRY TYPE ELECTRICAL BOX IN EXISTING PLUMBING WALL TO ACCOMMODATE LOW VOLTAGE SPLICES AND PASSAGE OF LOW VOLTAGE CABLES THROUGH THE EXISTING PLUMBING WALL.



C EXISTING BASEMENT TOILET/SHOWER ROOM PLAN
E3.1 SCALE: 1/4" = 1'-0"

ABBREVIATIONS

1PH	SINGLE PHASE
3PH	THREE PHASE
AFF	ABOVE FINISHED FLOOR
AFG	ABOVE FINAL GRADE
AJW	AUTHORITY HAVING JURISDICTION
AL	ALUMINUM
BFG	BELOW FINAL GRADE
BRKR	CIRCUIT BREAKER
C	CONDUIT
CKT	CIRCUIT
COORD	COORDINATE
CLG	CEILING
CU	COPPER
EC	ELECTRICAL CONTRACTOR
ENT	ELECTRICAL METALLIC TUBING
ETR	EXISTING TO REMAIN
EMH	ELECTRIC WATER HEATER
EMC	ELECTRIC WATER COOLER
EXIST	EXISTING
FLR	FLOOR
FMC	FLEXIBLE METAL CONDUIT
GC	GENERAL CONTRACTOR
GND	GROUND
HGT	HEIGHT
IAW	IN ACCORDANCE WITH
IG	ISOLATED GROUND
LL	LANDLORD
LCP	LIGHTING CONTROL PANEL
L/L	LIGHT, LIGHTS
MC	MECHANICAL CONTRACTOR
MGT	MOUNTED/MOUNTING
NL	NIGHT LIGHT
OCP	OVERCURRENT PROTECTION
PNL	PANEL/PANELBOARD
POC	POINT OF CONTACT
REC	RECEPTACLE
REX	REMOVE EXISTING DEVICE COMPLETE
RSS	RIGID GALVANIZED STEEL CONDUIT
RR	REMOVE AND RELOCATE
SCHD	SCHEDULE
UNO	UNLESS NOTED OTHERWISE
WP	WEATHERPROOF
XMR	TRANSFORMER

SYMBOL LEGEND	
SYMBOL	DESCRIPTION
	BRANCH CIRCUIT HOMERUN TO PANEL "R1", CIRCUIT #3 (TYPICAL)
	DRY-TYPE TRANSFORMER, HANG FROM STRUCTURE
	277/480V 3W 4W ELECTRICAL PANEL
	120/208V 3W 4W ELECTRICAL PANEL
	DUPLEX RECEPTACLE, NEMA 5-20, 0 INDICATES GFCI TYPE, MOUNT 18" AFF UNO
	DUPLEX RECEPTACLE, NEMA 5-20, MOUNT 18" AFF UNO
	QUADPLEX RECEPTACLE, NEMA 5-20.
	SWITCH, SINGLE POLE, 20A, 125/277V. SUBSCRIPT INDICATES SWITCHING SCHEME.
	DISCONNECT SWITCH, VOLTAGE AS REQUIRED, AMPACITY AS NOTED
	J-BOX, CEILING OR WALL MTD. SIZE AND TYPE AS REQUIRED
	COMMUNICATION OUTLET, PROVIDE 3/4"x2-1/8" BOX WITH IVORY COVER PLATE CONTAINING FOUR RJ-45 NON-HEATED OPENINGS. FIELD COORDINATE FINAL LOCATION OF COMMUNICATION BOXES. COMMUNICATION CABLES BY OTHERS, EC SHALL PROVIDE 1" EMT EMPTY CONDUIT SYSTEM FOR COMMUNICATIONS CABLES AS SHOWN AND NOTED ON PLANS. EMPTY CONDUIT SYSTEM SHALL TERMINATE AT EXISTING CABLE TRAY IN BASEMENT. PROVIDE PULL STRING IN ALL COMMUNICATION CONDUITS, ENTIRE LENGTH.

GENERAL ELECTRICAL NOTES:

- ALL CONDUIT PENETRATIONS THROUGH FIRE RATED WALLS, FLOORS, OR SHAFTS SHALL BE SEALED IN ACCORDANCE WITH SPECIFICATION SECTION 16050. CONDUITS ENTERING BUILDING FROM UNDERGROUND EXTERIOR SHALL HAVE "TUNK SEAL" PRODUCTS, OR EQUAL, AS DIRECTED BY ARCHITECT. (EMPTY CONDUITS SHALL BE SEALED AND CAPPED).
- CONTRACTOR SHALL COORDINATE LOCATIONS OF ALL INTERIOR LIGHTING FIXTURES AND CEILING MOUNTED DEVICES WITH THE ARCHITECTURAL REFLECTED CEILING PLANS, ELEVATIONS, SECTIONS AND DETAILS. COORDINATE LOCATIONS OF RECEPTACLES AND OTHER WALL MOUNTED DEVICES WITH THE ARCHITECTURAL WALL ELEVATIONS AND FINISHES.
- THE ROUTING OF ALL SURFACE MOUNTED/EXPOSED CONDUIT IN UNFINISHED AREAS (OR WHERE NOTED ON THE DRAWINGS) SHALL BE COORDINATED WITH, AND SHALL BE APPROVED BY THE ARCHITECT PRIOR TO INSTALLATION.
- CONTRACTOR SHALL VERIFY THE EXACT LOCATION OF MECHANICAL EQUIPMENT WITH THE MECHANICAL CONTRACTOR. EXACT ELECTRICAL REQUIREMENTS SHALL BE VERIFIED IN THE FIELD WITH THE EQUIPMENT'S NAMEPLATE DATA. THE CONTRACTOR SHALL MAKE APPROPRIATE ADJUSTMENTS TO WIRE AND FUSE SIZES IN ACCORDANCE WITH THE NAMEPLATE DATA.
- THE ELECTRICAL WIRING, CONNECTION AND PROTECTION REQUIREMENTS FOR OWNER FURNISHED EQUIPMENT SHALL BE VERIFIED IN THE FIELD WITH THE OWNER'S EQUIPMENT SUPPLIER, AND WITH THE NAMEPLATE DATA. FURNISH THE PROPER NEMA RECEPTACLE CONFIGURATIONS, CONNECTIONS, AND CIRCUITS IN ACCORDANCE WITH THE MANUFACTURER'S RECOMMENDATIONS.
- ALL BRANCH CIRCUITS AND FEEDERS SHALL CONTAIN AN INSULATED GROUNDING CONDUCTOR IN ACCORDANCE WITH SPECIFICATION SECTION 16400. NEUTRAL CONDUCTORS IN RECEPTACLE CIRCUITS SERVING DATA EQUIPMENT LOADS SHALL NOT BE SHARED IN ACCORDANCE WITH SPECIFICATION SECTION 16050.
- THE DISCONNECTING MEANS FOR ALL MOTORS AND EQUIPMENT SHALL BE INSTALLED IN A "READILY ACCESSIBLE" LOCATION AND SHALL HAVE PROPER WORKING SPACE AS DEFINED IN N.E.C. ARTICLE 100 AND 110.
- UTILIZATION OF THE PHRASE "PROVIDED BY" WITHIN THE CONTEXT OF THESE DOCUMENTS SHALL EXPLICITLY REPRESENT "FURNISHED AND INSTALLED BY".
- EXPOSED NON-METALLIC CONDUIT IS NOT PERMITTED AT INTERIOR LOCATIONS. ALL NEW WORK SHALL BE CONCEALED TO GREATEST EXTENT PRACTICAL. DO NOT INSTALL EXPOSED WORK IN PUBLIC AREAS WITHOUT CM APPROVAL.

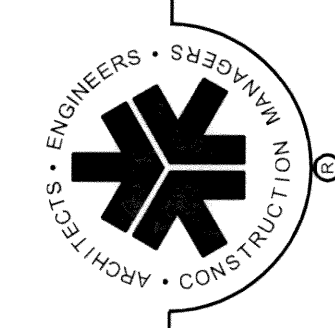
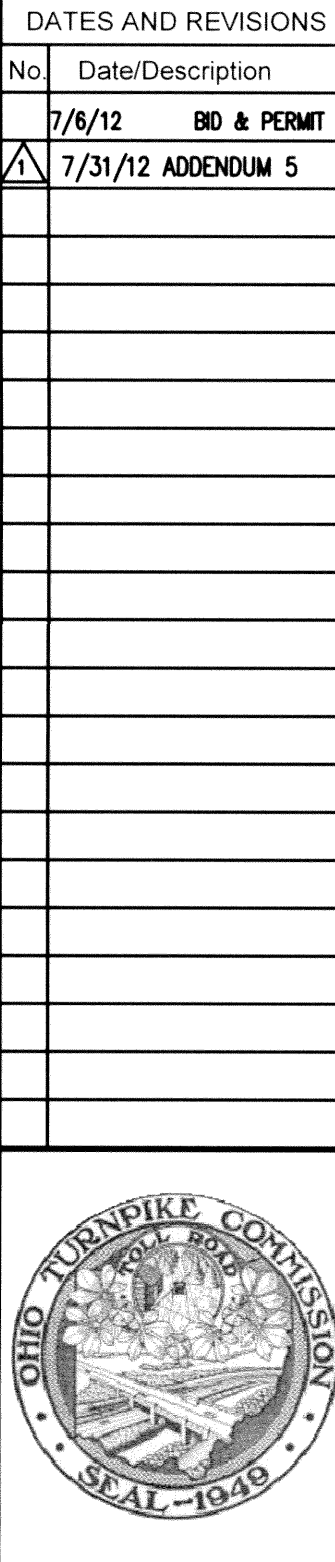
NOTE: SCOPE OF WORK SHOWN ON THE DRAWINGS ARE FOR BOTH SERVICE PLAZAS. THE ERIE ISLANDS PLAZA IS ON THE NORTH SIDE OF THE TURNPIKE AND THE COMMODORE PERRY PLAZA IS ON THE SOUTH SIDE OF THE TURNPIKE.

NOTE: EXISTING CIRCUITING SHOWN IN PANEL SCHEDULES WERE TAKEN FROM RECORD DRAWINGS AND CASUAL FIELD OBSERVATION AT THE ERIE ISLANDS SERVICE PLAZA AND IS NOT INTENDED TO BE EXACT.

PANELBOARD LOADING SCHEDULE		VOLTS 120/208			PANEL LP1			LOCATION BASEMENT						
SURFACE MOUNTED		PHASE 3			10 KAKC			EXISTING (ON EMERGENCY PWR)						
GROUND BAR		WIRE 4			MAINS AMPS 225/3 M.L.O.									
CKT	LOAD							LOAD						CKT
No.	DESCRIPTION	VA	AMPS	POLE	A	B	C	POLE	AMPS	VA	DESCRIPTION	No.		
1	MENS RR LTG	700	20	1	1700			1	20	1000	BASEMENT LTG	2		
3	MENS RR LTG	1200	20	1		1700		1	20	500	PHONES BUS CTR. LTG.	4		
5	RR ENT. LTG	500	20	1			1300	1	20	800	TR INFO.GAME.VEND.LTG.	6		
7	WOMENS RR LTG	700	20	1	1700			1	20	1000	PATRON ENT.	8		
9	WOMEN RR LTG	1200	20	1		1700		1	20	500	LOBBY TRACK	10		
11	TRUCKERS ENT.	700	20	1			700	1	20		SPARE	12		
13	TRUCKERS ENT.	1200	20	1	1700			1	20	500	LOBBY TRACK	14		
15	SPARE		20	1		500		1	20	500	S.W. VENDING RCPT.	16		
17	FOOD COURT CORR. LTG.	600	20	1			1100	1	20	500	S.W. VENDING RCPT.	18		
19	FOOD COURT CORR. LTG.	1100	20	1	2100			1	20	1000	FOOD CT. DOWN LTG.	20		
21	FOOD COURT CORR. LTG.	1100	20	1		1800		1	20	700	FOOD CT. DOWN LTG.	22		
23	FOOD COURT CORR. LTG.	1100	20	1			1800	1	20	700	FOOD CT. DOWN LTG.	24		
25	FOOD COURT CORR. LTG.	1100	20	1	2100			1	20	1000	FOOD CT. DOWN LTG.	26		
27	LOBBY LTG.	1500	20	1		2500		1	20	1000	FOOD CT. DOWN LTG.	28		
29	LOBBY LTG.	1500	20	1			2500	1	20	1000	CENTER FOOD CT. LTG.	30		
31	GIFT SHOP LTG.	1000	20	1	2000			1	20	1000	CENTER FOOD CT. LTG.	32		
33	LOBBY LTG.	1100	20	1		1350		1	20	250	TRACK LTG.	34		
35	CANOPY COOL. LTG.	700	20	1			2000	1	20	1300	FOOD CT. & CANOPY LTG.	36		
37					1000			1	20	1000	S.W. VENDING RCPT.	38		
39	ASCO TRANSFER SWITCH		70	3		1000		1	20	1000	S.W. VENDING RCPT.	40		
41								1000	1	20	1000	EXTNL.	42	
TOTAL CONNECTED LOAD			33250	12300	10560	10400								
TOTAL AMPERES			92.4	102.5	87.9	86.7								

PANELBOARD LOADING SCHEDULE				VOLTS 120/208			PANEL RP1			LOCATION BASEMENT				
SURFACE MOUNTED				PHASE 3			10 KAIC			EXISTING (ON EMERGENCY PWR)				
GROUND BAR				WIRE 4			MAINS AMPS 225/3 M.L.O.							
CKT	LOAD										LOAD			CKT
No.	DESCRIPTION	VA	AMPS	POLE	A	B	C	POLE	AMPS	VA	DESCRIPTION	No.		
1	BASEMENT ANNEX RCPT.	700	20	1	1500				1	20	800	ADA DOORS	2	
3	BASEMENT ANNEX RCPT.	1200	20	1		2000			1	20	800	LOBBY RCPT.	4	
5	EXT. RCPT/ADA DOORS	600	20	1			1200	1	20	600	LOBBY RCPT.	6		
7	GAME RM. RCPT.	1000	20	1	2000				1	20	1000	COPPER	8	
9	GAME RM. RCPT.	1200	20	1		1700			1	20	500	FAX MACHINE	10	
11	VENDING MACHINES	1000	20	1			1500	1	20	500	ATM	12		
13	VENDING MACHINES	1000	20	1	1800				1	20	800	M & W RESTRM.	14	
15	VENDING MACHINES	1000	20	1		1800			1	20	800	M & W RESTRM.	16	
17	VENDING MACHINES	1000	20	1			1600	1	20	800	M & W RESTRM.	18		
19	VENDING MACHINES	1000	20	1	2000				1	20	1000	VENDING MACHINE	20	
21	ELECTRIC WATER COOLER	1000	20	1		2000			1	20	1000	WOMENS RR FLUSH VALVE	22	
23	ELECTRIC WATER COOLER	1000	20	1				2000	1	20	1000	MENS RR FLUSH VALVE	24	
25	VENDING RCPT.	1000	20	1	2000				1	20	1000	WASHER	26	
27	VENDING RCPT.	1000	20	1		2000			1	20	1000	WASHER	28	
29	PIPE CHASE RCPT.	800	20	1			1300	1	20	500	DRYER	30		
31	COUNTER DOOR MTR.	1000	20	1	1500				1	20	500	DRYER	32	
33	EF1 & EF2	1400	20	1		2400			1	20	1000	WASHER	34	
35	EF3 & EF7	700	20	1			1200	1	20	500	DRYER	36		
37	RESTRM. SENSORS	500	20	1	700				1	20	200	TRUCKER FLUSH VALVE	38	
39	RESTRM. SENSORS	500	20	1		500			1	20		SPARE	40	
41	FIRE ALARM	1000	20	1			1000	1	20			SPARE	42	
TOTAL CONNECTED LOAD			33700	11500	12400	9800								
TOTAL AMPERES			93.6	95.8	103.3	81.7								

PANELBOARD LOADING SCHEDULE				VOLTS 120/208		PANEL		GS		LOCATION BASEMENT				
SURFACE MOUNTED				PHASE 3		10 KAIC		EXISTING (ON EMERGENCY PWR)						
GROUND BAR				WIRE 4		MAINS AMPS		50/3 MCB						
CKT	LOAD									LOAD				CKT
No.	DESCRIPTION	VA	AMPS	POLE	A	B	C	POLE	AMPS	VA	DESCRIPTION	No.		
1	GIFT SHOP LTG. 16" TRACK	1200	20	1	2200				1	20	1000	GIFT SHOP RCPT	2	
3	GIFT SHOP LTG. 16" TRACK	1200	20	1		2200			1	20	1000	GIFT SHOP RCPT.	4	
5	GIFT SHOP LTG. 16" TRACK	1200	20	1			2200		1	20	1000	GIFT SHOP RCPT	6	
7	GIFT SHOP LTG. 16" TRACK	1200	20	1	2200				1	20	1000	GIFT SHOP RCPT	8	
9	DISPLAY LTG.	700	20	1		1700			1	20	1000	GIFT SHOP RCPT	10	
11	DISPLAY LTG.	700	20	1			1700		1	20	1000	GIFT SHOP RCPT	12	
13	SPARE		30	1	1000			2	20*		1000	GIFT SHOP RCPT	14	
15	SPACE					1000					1000		16	
17	SPACE						0	1	20		SPARE		18	
19	SPACE				0				1	20	SPARE		20	
21	SPACE					0			1	20	SPARE		22	
23	SPACE										BLANK		24	
* INDICATES NEW CIRCUIT BREAKER IN EXISTING SPACE														
TOTAL CONNECTED LOAD			14200	5400	4900	3900								
TOTAL AMPERES			39.4	45.0	40.8	32.5								



**RICHARD L. BOWEN
+ ASSOCIATES INC.**
13000 Shaker Boulevard / Cleveland, Ohio 44120
Phone: 216.481.4603
www.rlb.com email@rlb.com

NOTICE
THIS ARCHITECTURAL AND ENGINEERING DRAWING IS GIVEN IN CONFIDENCE. NO USE OR REPRODUCTION MAY BE MADE WITHOUT PRIOR WRITTEN CONSENT OF THE ARCHITECT. ALL RIGHTS ARE HEREBY SPECIFICALLY RESERVED.
RICHARD L. BOWEN + ASSOCIATES INC.
CLEVELAND, OHIO 44120

OHIO TURNPIKE COMMISSION
SERVICE PLAZA RENOVATIONS
Erie Islands and Commodore Perry
Milepost 100 - Sandusky County, Ohio
ELECTRICAL SCHEDULES AND DETAILS

DRAWN BY: RA
CHECKED BY: JEM
RLB NO.: 6744.09
OTC NO.: 53-12-02
SERVICE PLAZA: SP-4
DRAWING NO.: **E3.2**
SHT. 27 OF 27