



## News from the Ohio Turnpike

682 Prospect Street, Berea, Ohio 44017-2799

Phone: 440.971.2066 [www.ohioturnpike.org](http://www.ohioturnpike.org)

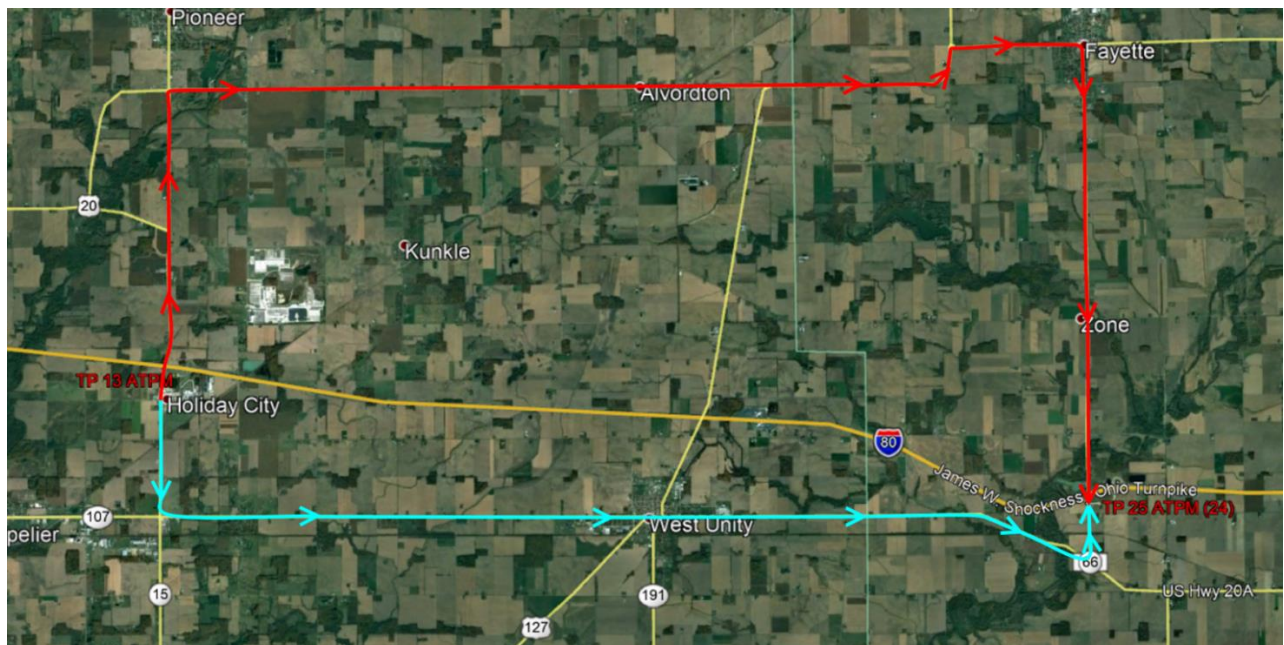
### **\*\*MEDIA ALERT\*\***

#### **Ohio Turnpike's eastbound entrance at Exit 13 to close until June 15**

**BEREA** (May 23, 2019) – The Ohio Turnpike will be closing the eastbound entrance ramp from Exit 13 (US 15/Bryan-Montpelier) to the mainline on Friday, May 24 at noon until June 15.

Customers will be detoured eastbound to Exit 25 (US 66/Archbold/Fayette) via SR 15 to either US 20 or SR 107. The two north and south detours for eastbound customers are pictured below.

This closure is necessary as part of the Ohio Turnpike's resurfacing project in Williams County.



For ongoing updates please follow the Ohio Turnpike on Twitter via @OhioTurnpike or use Waze.

###

**For more information contact:**

Brian Newbacher, Public Information Officer, 440-971-2066, 440-821-3399 (cell)

[brian.newbacher@ohioturnpike.org](mailto:brian.newbacher@ohioturnpike.org)