



**OHIO TURNPIKE AND  
INFRASTRUCTURE COMMISSION**

**ADDENDUM NO. 4**  
**ISSUED NOVEMBER 25, 2019**

to

**PROJECT NO. 43-19-05 (PART A)**  
**BRIDGE REPAIR AND REHABILITATION**  
**OHIO TURNPIKE RAMP OVER OHIO TURNPIKE M.P. 161.5,**  
**OHIO TURNPIKE RAMP OVER OHIO TURNPIKE M.P. 161.8**  
**CUYAHOGA COUNTY, OHIO – ISSUED NOVEMBER 6, 2019**

**PROJECT NO. 43-19-05 (PART B)**  
**BRIDGE DECK REPLACEMENT AND REHABILITATION**  
**WEBSTER ROAD OVER OHIO TURNPIKE M.P. 162.9,**  
**ABBEY ROAD OVER OHIO TURNPIKE M.P. 164.4**  
**CUYAHOGA COUNTY, OHIO – ISSUED NOVEMBER 6, 2019**

**PREVIOUSLY EXTENDED TO: 2:00 P.M. (EASTERN TIME), ~~NOVEMBER 27~~ DECEMBER 3, 2019**

**ATTENTION OF BIDDERS IS DIRECTED TO:**  
**ANSWERS TO QUESTIONS RECEIVED THROUGH 2:00 PM ON NOVEMBER 25, 2019**

**-AND-**

**MODIFICATIONS TO THE CONTRACT DOCUMENTS**

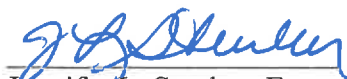
Plan Sheets: 2, 17 and 22 of 30

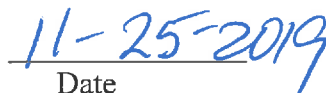
**-AND-**

**Bid Schedule of Items and Estimated Quantities Worksheet**

Ref. Nos.: 34 & 41

Issued by the Ohio Turnpike and Infrastructure Commission through Jennifer L. Stueber, Esq., General Counsel.

  
Jennifer L. Stueber, Esq.,  
General Counsel

  
Date

**ANSWERS TO QUESTIONS RECEIVED THROUGH 2:00 P.M. ON NOVEMBER 25, 2019:**

**Q#11** On sheet 22/30, it calls for the existing 2” conduit in the right parapet to remain. This is not possible to do and still demo the parapet. Furthermore, it is not shown in the proposed transverse section for the bridge. Please confirm if this conduit needs to be saved; and if it does please confirm if new conduit can be run in the proposed parapet in lieu of saving the existing.

*A#11 The existing 2” conduit does not need to remain. Plan Sheet 22 of 30 has been revised and is included as part of this Addendum No. 4.*

**Q#12** Reference 41, 1” PEJF shows unit of measure of EACH. Should this unit of measure be SQ. FT.?

*A#12 The correct unit of measure for Reference 41, 1” PEJF is SQ. FT. The Estimated Quantities Worksheet has been revised and is included as part of this Addendum No. 4.*

**Q#14** It appears the existing end diaphragms will interfere with the anchor bolt installation for the new fixed bearings at Webster Rd. The diaphragms will have to be removed and reinstalled in order to drill and install the proposed anchor bolt. How will this removal and replacement be paid?

*A#14 The installation of the fixed bearings is to be performed in accordance with SP 516J which indicates all labor, material and equipment necessary to remove the existing bearing devices, including anchor bolts, and install new ones is included for payment in this item. If the contractor’s means and methods require the removal of any additional bridge components, the removal and replacement of these components is also included for payment in Item SP 516J.*

**Q#15** The temporary removal and reattachment of the end diaphragms will damage the existing paint on the structural steel. Will it be required to repair the paint on the structural steel according to 514.22?

*A#15 The installation of the fixed bearings is to be performed in accordance with SP 516J which indicates necessary sandblasting and repainting of all previously painted surfaces damaged during the process of removing the existing bearings and placing new bearings is to be performed in accordance with SP 514A and SP 525A and is included in Item SP 516J.*

**Q#16** Upon a site visit, it was noticed that there is an existing cable/communication line that is attached to and/or being supported by the existing west side fence at the Webster Rd Bridge. It also appears that this line has quite a bit of slack in the line. Will the utility owner remove this cable from the fence and/or support this cable prior to start of construction for this structure?

*A#16 The connection of the utility line to the bridge fencing will be removed prior to start of construction.*

**Q#17 Upon a site visit, it was noticed that there is an existing 2” Diameter conduits running in both parapets at the Abbey Rd Bridge. Are these conduits carrying live utilities? Will any live cables in these conduits be removed/relocated prior to the start of construction for this structure?**

*A#17 The existing conduits in the parapets on the Abbey Road bridge do not carry any live utilities. The existing conduits are to be removed and do not get replaced with the new deck and parapets.*

**Q#18 The structure at Abbey Road has proposed wingwalls coming off of the existing cellular abutments and will be paid under the Class HP4 Concrete, Abutment Slabs; however, there is no item set up for the unclassified excavation or backfill of these wingwall. Where will the excavation and backfill of these wingwalls be paid?**

*A#18 The structure at Abbey Road does not have cellular abutments or abutment slabs. It appears this question is intended for the Webster Road bridge. The plan note on Sheet 14 of 30 indicates the excavation for the wall is to be performed per CMS 503 with payment incidental to SP 202.*

**Q#19 Ref No. 34 – Class HP4 Concrete, Superstructure Deck Slab is overstated. It appears that Abbey Road Bridge deck was calculated using two sidewalks when it only has one. Please verify the Superstructure Deck Slab Concrete quantity.**

*A#19 The plan quantity for Class HP 4 Concrete, Superstructure Deck Slab has been revised from a project total of 641 CU. YD. to 599 CU.YD. Part B Plan Sheet 2 of 30 and the Estimated Quantity Worksheet have been revised and are included in this Addendum No. 4.*

**Q#20 Ref No. 41 – 1” Performed Expansion Joint Filler is set up to be paid by the each on the bid form. Please revise this to be paid by the SF.**

*A#20 See the response to Question 12 in this Addendum No. 4.*

**Q#21 Page 17 of 30 shows the details for the Side Retainer Angle. Please provide additional details on the side retainer including length and number of anchor rods per side retainer angle.**

*A#21 Additional Details for the side retainer angle have been added to Part B Plan Sheet 17 of 30 and is included in this Addendum No. 4.*

**Receipt of Addendum No. 4  
Project No. 43-19-05 (Part A & B) is hereby acknowledged:**

(Firm Name) \_\_\_\_\_

ADDENDUM NO. 4  
PROJECT NO. 43-19-05 PART A & B  
PAGE 4



(Signature) \_\_\_\_\_

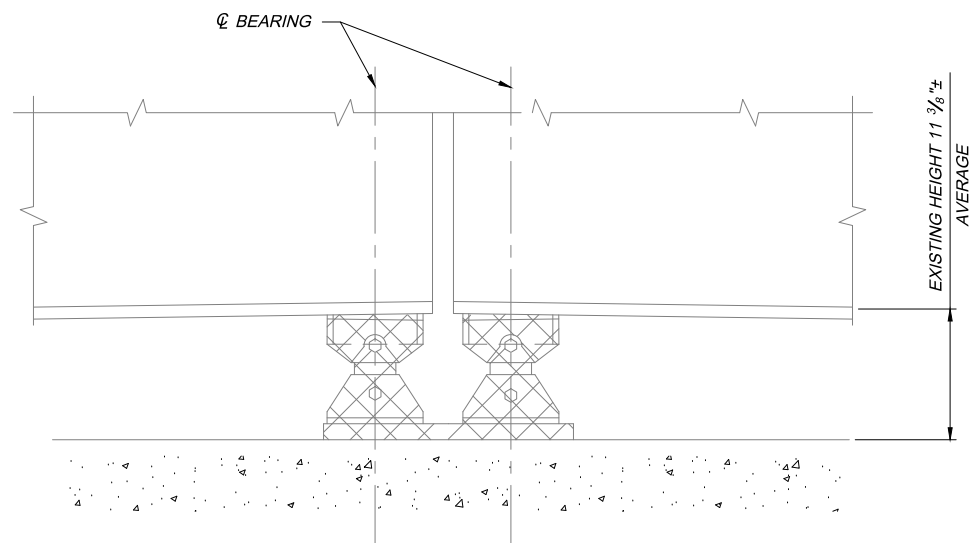
(Printed Name) \_\_\_\_\_

(Date) \_\_\_\_\_

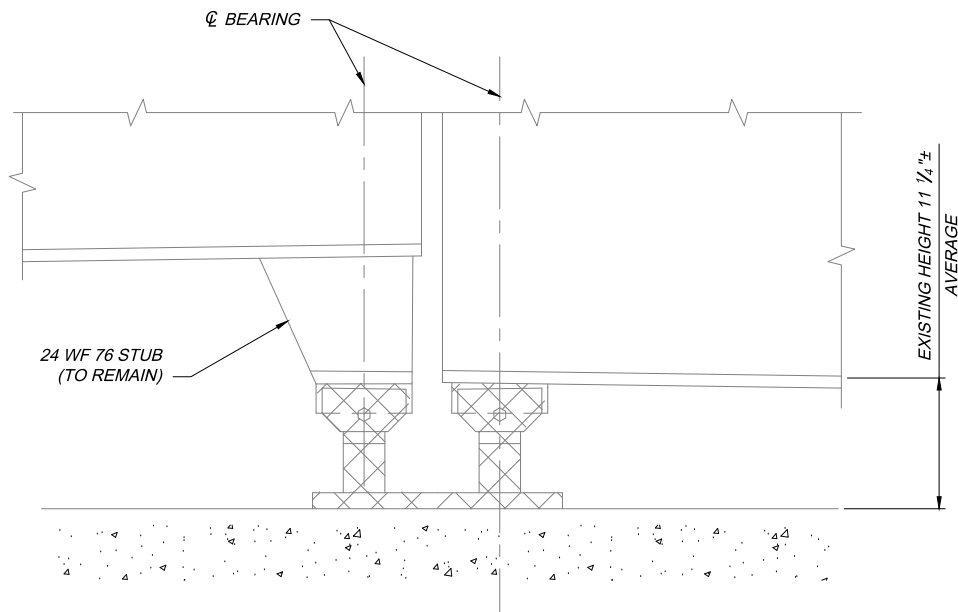
**BIDDERS MUST RETURN THE ABOVE ACKNOWLEDGEMENT  
OF RECEIPT OF ADDENDUM NO. 4 WITH THEIR BID.**

PROJECT NO. 43-19.05B GENERAL SUMMARY					
ITEM	TOTAL	UNIT	DESCRIPTION	M.P. 162.9	M.P. 164.4
GENERAL					
IB.ART.6	LUMP	LUMP SUM	PREMIUM FOR CONTRACT PERFORMANCE BOND AND PAYMENT BOND	LUMP	LUMP
SP 614	LUMP	LUMP SUM	MAINTAINING TRAFFIC	LUMP	LUMP
SP 619	LUMP	LUMP SUM	FIELD OFFICE	LUMP	LUMP
SP 623	LUMP	LUMP SUM	CONSTRUCTION LAYOUT SURVEY	LUMP	LUMP
624	LUMP	LUMP SUM	MOBILIZATION	LUMP	LUMP
ROADWAY					
201	LUMP	LUMP SUM	CLEARING AND GRUBBING	LUMP	LUMP
202	380	FOOT	GUARDRAIL REMOVED	200	180
254	374	SQ. YD.	PAVEMENT PLANNING ASPHALT CONCRETE (T=3")	188	186
407	43	GALLON	NON-TRACKING TACK COAT	21	22
441	15	CU. YD.	ASPHALT CONCRETE SURFACE COURSE, TYPE 1, (448), PG64-22	7	8
442	15	CU. YD.	ASPHALT CONCRETE INTERMEDIATE COURSE, TYPE 2, (448), PG64-22	7	8
606	63	FOOT	GUARDRAIL, TYPE MGS		63
606	100	FOOT	GUARDRAIL, TYPE MGS WITH LONG POSTS	100	
606	8	EACH	MGS BRIDGE TERMINAL ASSEMBLY, TYPE 1	4	4
606	2	EACH	ANCHOR ASSEMBLY, MGS TYPE T	-	2
606	2	EACH	ROUNDED END SECTION	-	2
608	432	SQ. FT.	4" CONCRETE WALK	252	180
609	148	FOOT	CURB, TYPE 6	56	92
611	3	EACH	CATCH BASIN ADJUSTED TO GRADE		3
638	1	EACH	VALVE BOX ADJUSTED TO GRADE	1	-
642	0.13	MILE	CENTER LINE, TYPE 1	0.06	0.07
642	0.25	MILE	EDGE LINE, 4", TYPE 1	0.12	0.13
STRUCTURES					
202	216	SQ. YD.	APPROACH SLAB REMOVED	83	133
SP 202	LUMP	LUMP SUM	PORTIONS OF STRUCTURE REMOVED	LUMP	LUMP
SP 509	207,954	POUND	EPOXY COATED REINFORCING STEEL, GRADE 60	96,180	111,774
509	200	POUND	REINFORCING STEEL, REPLACEMENT OF EXISTING REINFORCING STEEL	100	100
510	108	EACH	DOWEL HOLES WITH NON-SHRINK, NON-METALLIC GROUT	44	64
SP 511B	599	CU. YD.	CLASS HP4 CONCRETE, SUPERSTRUCTURE DECK SLAB	283	316
SP 511B	131	CU. YD.	CLASS S CONCRETE, BARRIERS AND PARAPETS, USING TYPE 1 CEMENT	60	71
SP 511B	10	CU. YD.	CLASS S CONCRETE, WINGWALL BARRIERS AND PARAPETS, USING TYPE 1 CEMENT	-	10
SP 511B	53	CU. YD.	CLASS HP4 CONCRETE, ABUTMENT SLABS	53	-
SP 511B	6	CU. YD.	CLASS HP4 CONCRETE, ABUTMENT BACKWALL	-	6
SP 511B	8	CU. YD.	CLASS HP4 CONCRETE, FOR PREPLACEMENT TESTING	4	4
513	4,658	EACH	WELDED STUD SHEAR CONNECTORS	2,088	2,570
516	85	SQ. FT.	1" PREFORMED EXPANSION JOINT FILLER	45	40
SP 516A	50	FOOT	CRACK REPAIR USING EPOXY INJECTION	25	25
SP 516B	1,810	FOOT	SEALING OF CONSTRUCTION JOINTS	928	882
SP 516G	20	EACH	REPLACE EXPANSION BEARING DEVICE	20	-
SP 516J	10	EACH	REPLACE FIXED BEARING DEVICE	10	-
SP 519	58	SQ. FT.	PATCHING OF CONCRETE STRUCTURES	52	6
526	219	SQ. YD.	REINFORCED CONCRETE APPROACH SLABS	86	133
SP 527	LUMP	LUMP SUM	FALSEWORK, TEMPORARY BRACING AND PROTECTIVE STRUCTURES	LUMP	LUMP
SP 533	160	FOOT	3" CONTINUOUS STRIP SEAL IN STRUCTURAL STEEL JOINT	76	84
SP 533A	76	FOOT	1 1/2" COMPRESSION SEAL IN STRUCTURAL STEEL JOINT	76	-
SP 536	1,117	SQ. YD.	CONCRETE WEATHERPROOFING, DECK, ABUTMENT SLABS AND APPROACH SLABS	1,117	-
SP 536	1,239	SQ. YD.	CONCRETE WEATHERPROOFING, DECK, AND APPROACH SLABS	-	1,239
SP 536	720	SQ. YD.	CONCRETE WEATHERPROOFING, SUBSTRUCTURE	372	348
SP 607	721	FOOT	TYPE I FENCE, ALL ALUMINUM (9'-0" CHAIN LINK WITH SPECIALS)	450	271
SP 607	290	FOOT	TYPE II FENCE, ALL ALUMINUM (9'-0" CHAIN LINK WITH SPECIALS)	-	290

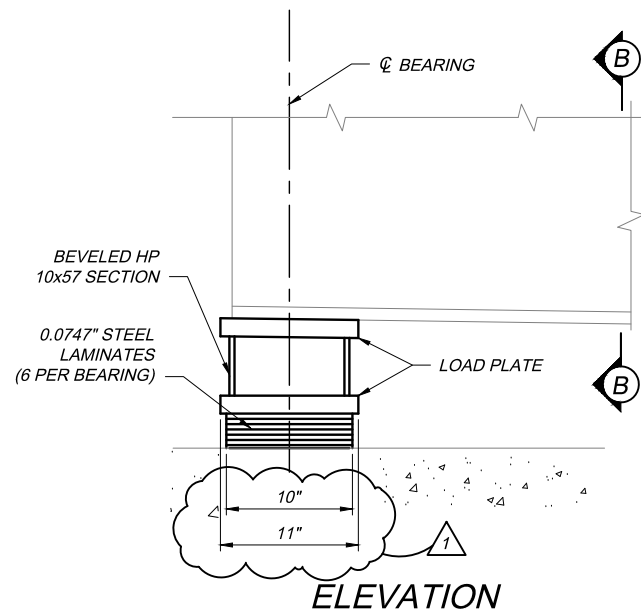
	<b>GENERAL SUMMARY</b> WEBSTER AND ABBEY ROAD OVER OHIO TURNPIKE CUYAHOGA COUNTY M.P. 162.9, 164.4	PROJECT 43-19-05B DATE: 2/14/19	DESIGN AGENCY  14875 W. 4250 S. Road, Suite 200 Parma, OH 44129 (937) 258-0000 Ext. 1037 258-5100 Fax • LAR@ac.com
NO. 1	REVISIONS ADDENDUM 4	CHECKED JLM IN CHARGE	BY DATE JLM 11/19
DESIGNED CEL DRAWN	NO. 1	CHECKED JLM IN CHARGE	BY DATE JLM 11/19
DESIGNED CEL	NO. 1	CHECKED JLM IN CHARGE	BY DATE JLM 11/19



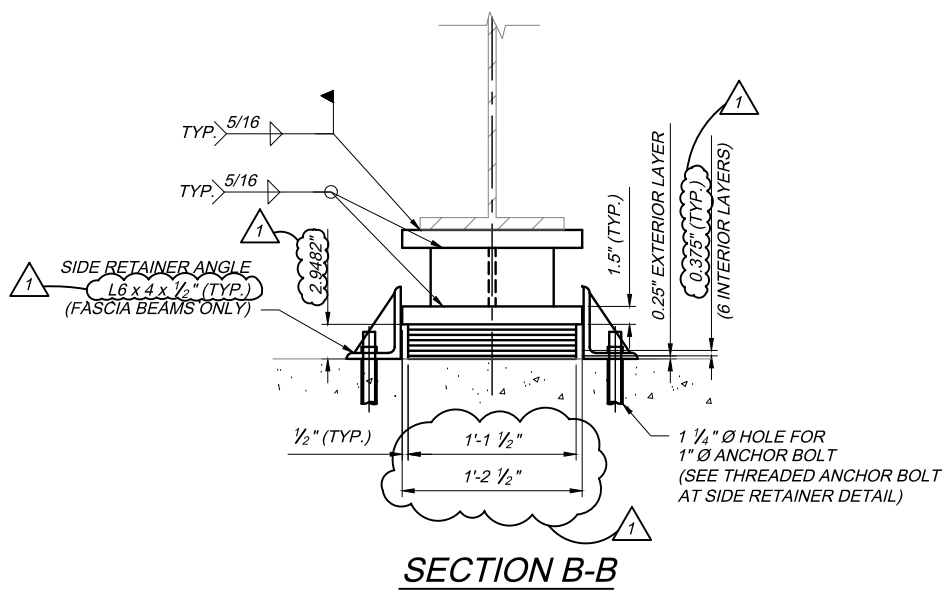
**REMOVAL DETAIL FOR FASCIA BEAM**



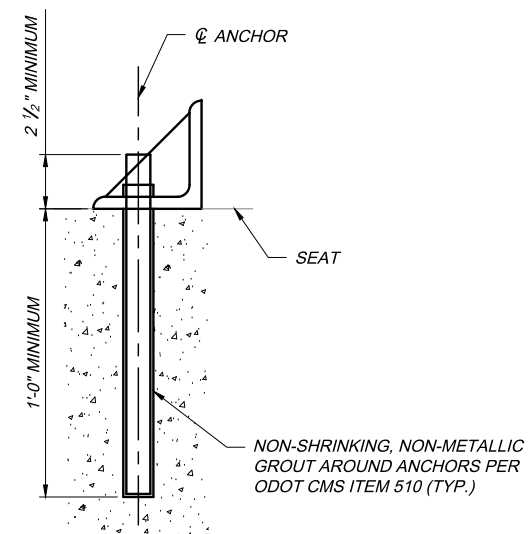
**REMOVAL DETAIL FOR INTERIOR BEAM**



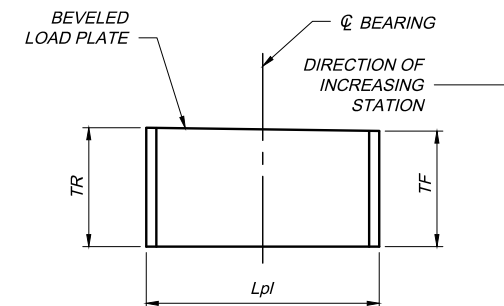
**ELEVATION**



**SECTION B-B**



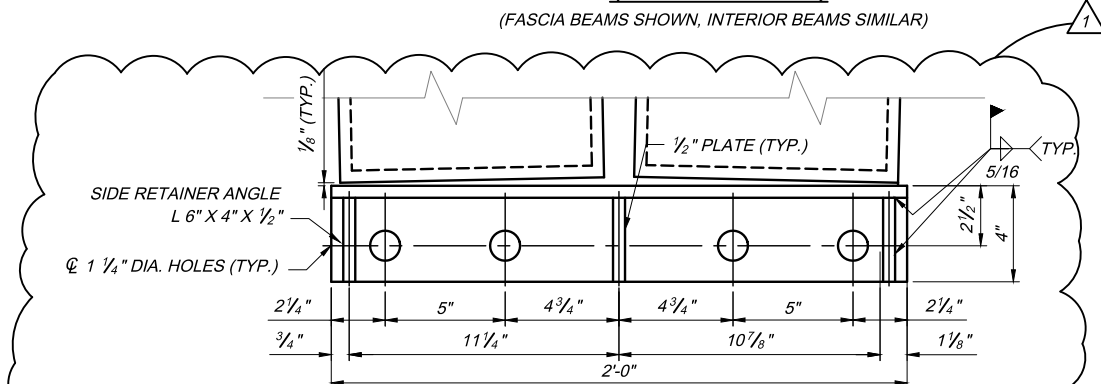
**THREADED ANCHOR BOLT (AT SIDE RETAINER ANGLE)**



**BEVELED HP SECTION DETAIL**

**BEARING DETAIL B - PIER 1, PIER 3 (EXPANSION)**

(FASCIA BEAMS SHOWN, INTERIOR BEAMS SIMILAR)



**SIDE RETAINER ANGLE DETAIL**

(REQUIRED ON BOTH SIDES OF EXPANSION BEARINGS AT FASCIA BEAMS ONLY)

BEVELED HP SECTION DIMENSION			
LOCATION	TR	TF	Lpl
REAR BEARING PIER 1	5.25"	5.38"	10"
FORWARD BEARING PIER 1	5.25"	5.38"	10"
REAR BEARING PIER 3	5.38"	5.25"	10"
FORWARD BEARING PIER 3	5.38"	5.25"	10"



- DENOTES PORTIONS OF BEARINGS TO BE REMOVED

**NOTES:**

- FOR ELASTOMERIC BEARING NOTES, SEE SHEET 16 OF 30. THE ELASTOMER FOR THE PIER BEARINGS SHALL HAVE A HARDNESS OF 60 DUROMETER.
- COSTS FOR SIDE RETAINER ANGLE, ANCHOR ROD, AND DOWEL HOLE SHALL BE INCIDENTAL TO SP 516 "REPLACE EXPANSION BEARING DEVICE".

MP1629\_Webster\_SB002.dwg, 11/25/19 - 11:53am

DESIGN AGENCY: **JTD**  
 148 W. 4th St., Columbus, OH 43215  
 (614) 291-1100

BY DATE: **JLM 11/19**

REVISIONS: **ADDENDUM 4**

CHECKED: **JLM** IN CHARGE: **AJS**

DESIGNED: **AMT** DRAWN: **NRP**

PROJECT: **43-19-05B** DATE: **2/14/19**

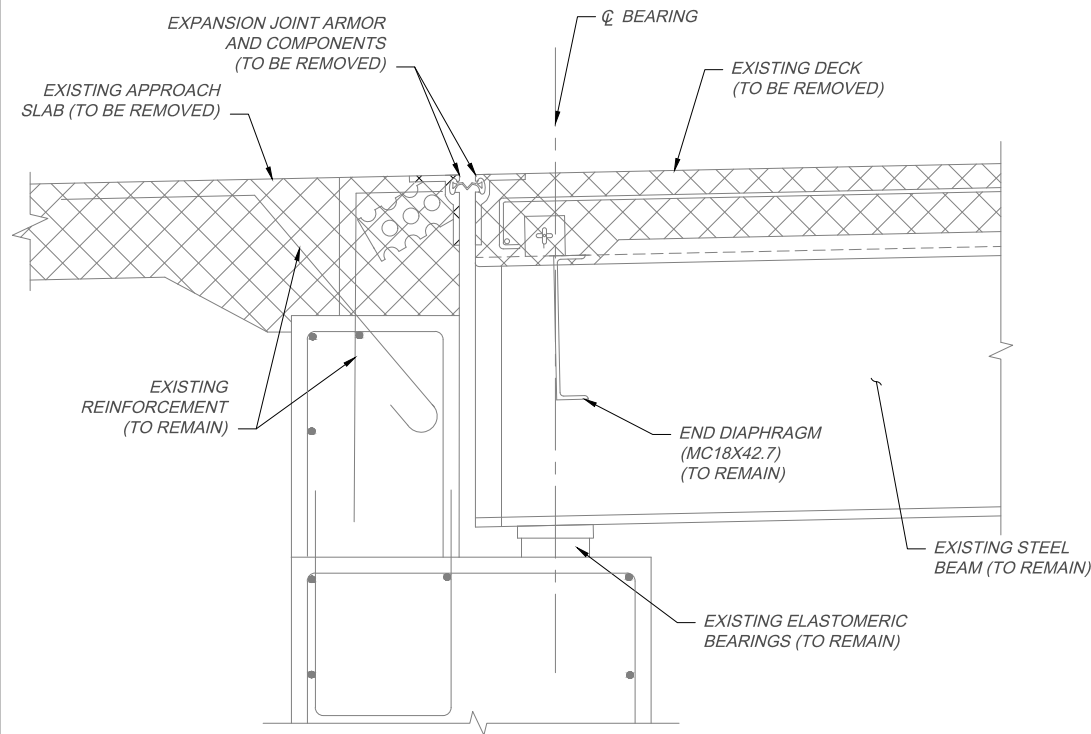
BEARING DETAILS  
 WEBSTER ROAD OVER OHIO TURNPIKE  
 CUYAHOGA COUNTY

M.P. 162.9

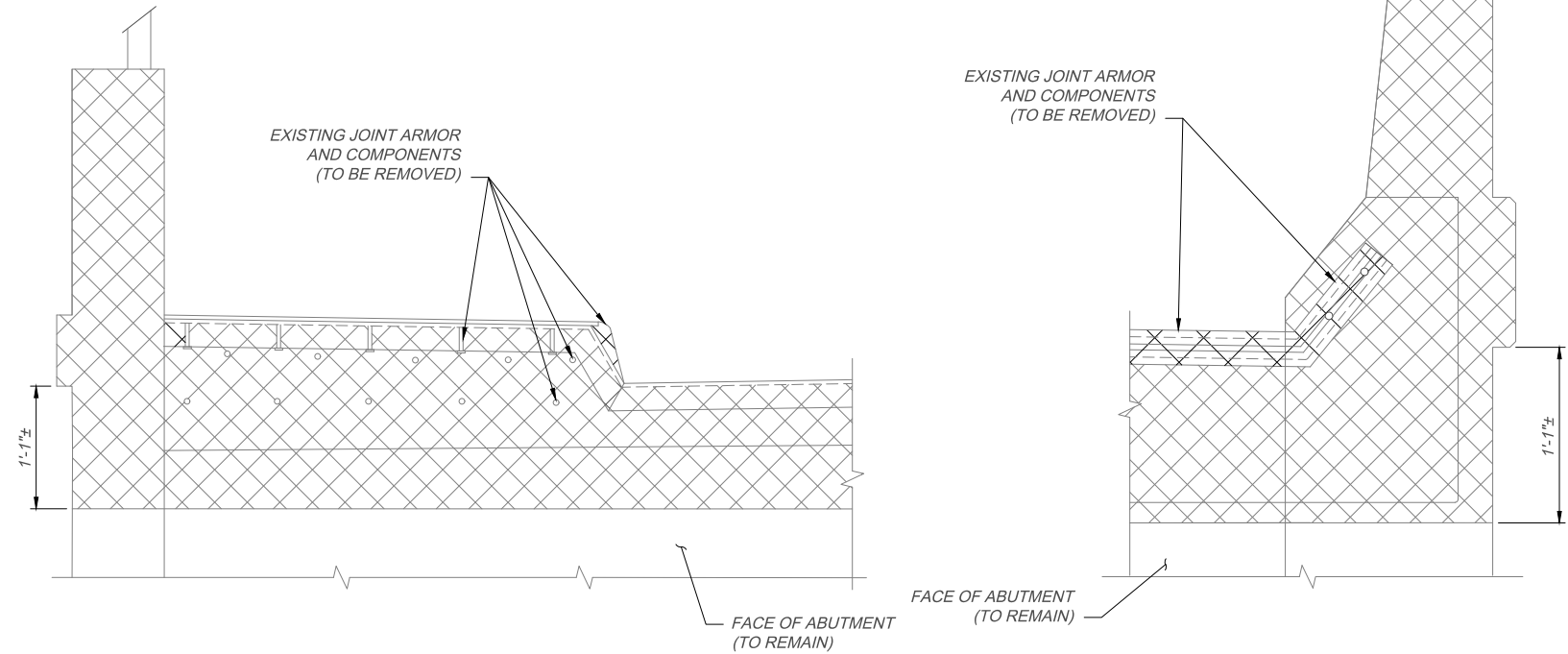
**OHIO TURNPIKE AND INFRASTRUCTURE COMMISSION**

10/13  
 17  
 30

MP1644\_Abbey\_SV001.dwg: 11/21/19 - 4:25pm



**ABUTMENT SECTION**

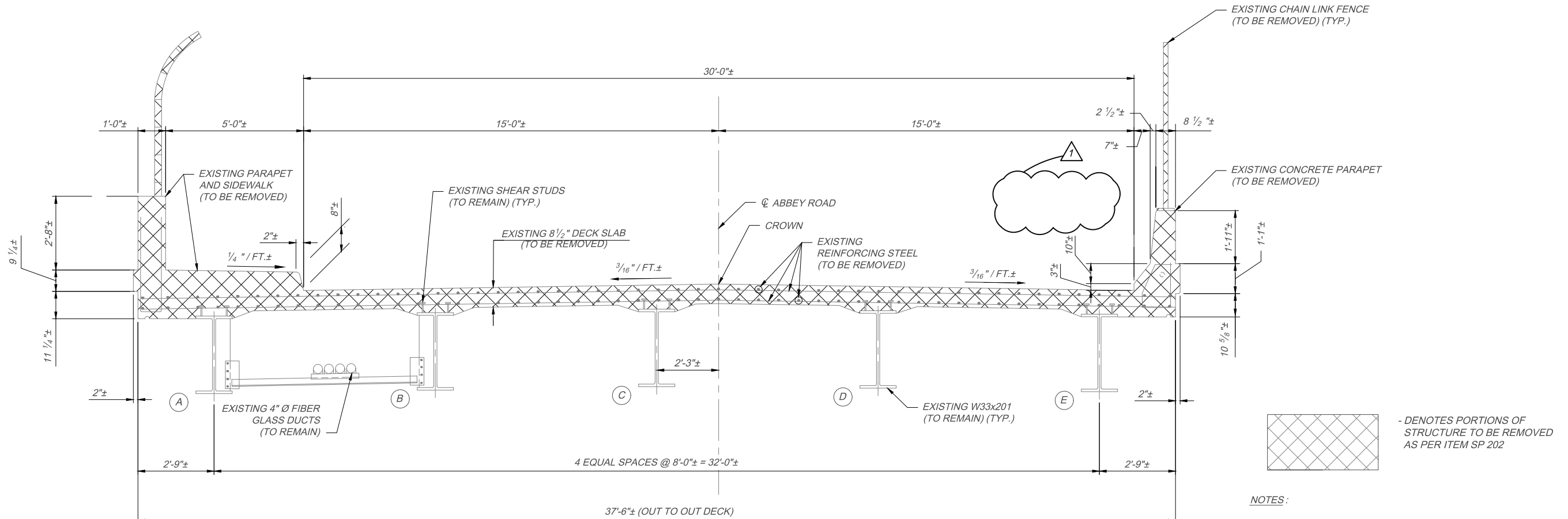


**SIDEWALK SECTION**

(STRIP SEAL AT ABUTMENTS)  
(SECTION H-H)

**BARRIER SECTION**

(STRIP SEAL AT ABUTMENTS)  
(SECTION G-G)



**EXISTING TRANSVERSE SECTION**

**NOTES:**

1. FOR SECTION H-H LOCATION, SEE SHEET 26 OF 30.
2. FOR SECTION G-G LOCATION, SEE SHEET 25 OF 30.

	DESIGN AGENCY	BY DATE	NO.	CHECKED	DESIGNED	<b>REMOVAL DETAILS</b> <b>ABBAY ROAD OVER OHIO TURNPIKE</b> CUYAHOGA COUNTY M.P. 164.4
	<small>148 E. 1st St. • 44119 • Columbus, Ohio • 614.260.1200          148 E. 1st St. • 44119 • Columbus, Ohio • 614.260.1200          (877) 256-0000 • www.jl.com</small>	JLM 11/19	1	JLM	AMT	
	ADDENDUM 4	JLM	JLM	MAS		
		JLM	AJS			
	REVISIONS					

PROJECT NUMBER 43-19-05 ESTIMATED QUANTITIES WORKSHEET						
Ref No.	Item No.	Item Description	Approx. Quantity	Unit	Unit Cost	Extended Bid Amount
<b>PART A AND PART B - GENERAL (Ref. Nos. 1 - 5)</b>						
1	IB. ART. 6	PREMIUM FOR CONTRACT PERFORMANCE BOND AND PAYMENT BOND	1	LUMP SUM		
2	SP 614	MAINTAINING TRAFFIC	1	LUMP SUM		
3	SP 619	FIELD OFFICE	1	LUMP SUM		
4	SP 623	CONSTRUCTION LAYOUT SURVEY	1	LUMP SUM		
5	624	MOBILIZATION	1	LUMP SUM		
<b>TOTAL - GENERAL</b>						
<b>PART A - BRIDGE REPAIR AND REHABILITATION (Ref. Nos. 6 - 11)</b>						
6	SP 202	PORTIONS OF STRUCTURE REMOVED	1	LUMP SUM		
7	509	REINFORCING STEEL, REPLACEMENT OF EXISTING REINFORCING STEEL	200	POUND		
8	SP 516A	CRACK REPAIR USING EPOXY INJECTION	30	FOOT		
9	SP 519	PATCHING CONCRETE STRUCTURES	1,860	SQ. FT.		
10	SP 527	FALSEWORK, TEMPORARY BRACING, AND PROTECTIVE STRUCTURES	1	LUMP SUM		
11	SP 536	CONCRETE WEATHERPROOFING, SUBSTRUCTURE	816	SQ. YD.		
<b>TOTAL - BRIDGE REPAIR AND REHABILITATION</b>						
<b>PART B - BRIDGE DECK REPLACEMENT AND REHABILITATION (Ref. Nos. 12 - 55)</b>						
12	201	CLEARING AND GRUBBING	1	LUMP SUM		
13	202	GUARDRAIL REMOVED	380	FOOT		
14	254	PAVEMENT PLANING, ASPHALT CONCRETE (T=3")	374	SQ. YD.		
15	407	NON-TRACKING TACK COAT	45	GALLON		
16	441	ASPHALT CONCRETE SURFACE COURSE, TYPE 1, (448), PG64-22	15	CU. YD.		
17	442	ASPHALT CONCRETE INTERMEDIATE COURSE, TYPE 2, (448), PG 64-22	15	CU. YD.		
18	606	GUARDRAIL, TYPE MGS	63	FOOT		
19	606	GUARDRAIL, TYPE MGS WITH LONG POSTS	100	FOOT		
20	606	MGS BRIDGE TERMINAL ASSEMBLY, TYPE 1	8	EACH		
21	606	MGS ANCHOR ASSEMBLY, TYPE T	2	EACH		
22	606	ROUNDED END SECTION	2	EACH		
23	608	4" CONCRETE WALK	432	SQ. FT.		
24	609	CURB, TYPE 6	148	FOOT		
25	611	CATCH BASIN ADJUSTED TO GRADE	3	EACH		
26	638	VALVE BOX ADJUSTED TO GRADE	1	EACH		
27	642	CENTER LINE, TYPE 1	0.13	MILE		
28	642	EDGE LINE, 4", TYPE 1	0.25	MILE		
29	202	APPROACH SLAB REMOVED	216	SQ. YD.		
30	SP 202	PORTIONS OF STRUCTURE REMOVED	1	LUMP SUM		
31	SP 509	EPOXY COATED REINFORCING STEEL, GRADE 60	207,954	POUND		
32	509	REINFORCING STEEL, REPLACEMENT OF EXISTING REINFORCING STEEL	200	POUND		



33	510	DOWEL HOLES WITH NONSHRINK, NONMETALLIC GROUT	108	EACH	
34	SP 511B	CLASS HP4 CONCRETE, SUPERSTRUCTURE DECK SLAB	<b>599</b>	CU. YD.	
35	SP 511B	CLASS S CONCRETE, BARRIERS AND PARAPETS, USING TYPE 1 CEMENT	131	CU. YD.	
36	SP 511B	CLASS S CONCRETE, WINGWALL BARRIERS AND PARAPETS, USING TYPE 1 CEMENT	10	CU. YD.	
37	SP 511B	CLASS HP4 CONCRETE, ABUTMENT SLABS	53	CU. YD.	
38	SP 511B	CLASS HP4 CONCRETE, ABUTMENT BACKWALL	6	CU. YD.	
39	SP 511B	CLASS HP4 CONCRETE, FOR PREPLACEMENT TESTING	8	CU. YD.	
40	513	WELDED STUD SHEAR CONNECTORS	4,658	EACH	
41	516	1" PREFORMED EXPANSION JOINT FILLER	85	<b>SQ. FT.</b>	
42	SP 516A	CRACK REPAIR USING EPOXY INJECTION	50	FOOT	
43	SP 516B	SEALING OF CONSTRUCTION JOINTS	1,810	FOOT	
44	SP 516G	REPLACE EXPANSION BEARING DEVICE	20	EACH	
45	SP 516J	REPLACE FIXED BEARING DEVICE	10	EACH	
46	SP 519	PATCHING OF CONCRETE STRUCTURES	58	SQ. FT.	
47	526	REINFORCED CONCRETE APPROACH SLABS	219	SQ. YD.	
48	SP 527	FALSEWORK, TEMPORARY BRACING AND PROTECTIVE STRUCTURES	1	LUMP SUM	
49	SP 533	3" CONTINUOUS STRIP SEAL IN STRUCTURAL STEEL JOINT	160	FOOT	
50	SP 533	1 1/2" COMPRESSION STRIP SEAL IN STRUCTURAL STEEL JOINT	76	FOOT	
51	SP 536	CONCRETE WEATHERPROOFING, DECK, ABUTMENT SLABS, AND APPROACH SLABS	1,117	SQ. YD.	
52	SP 536	CONCRETE WEATHERPROOFING, DECK, AND APPROACH SLABS	1,239	SQ. YD.	
53	SP 536	CONCRETE WEATHERPROOFING, SUBSTRUCTURE	720	SQ. YD.	
54	SP 607	TYPE I FENCE, ALL ALUMINUM (9'-0" CHAIN LINK WITH SPECIALS)	721	FOOT	
55	SP 607	TYPE II FENCE, ALL ALUMINUM (6'-0" CHAIN LINK WITH SPECIALS)	290	FOOT	
<b>TOTAL - BRIDGE DECK REPLACEMENT AND REHABILITATION</b>					

## SUMMARY

The total amount of the preceding Bid, based upon the approximate quantities given above, and the Unit Prices and LUMP SUM Sum specified by the undersigned, amounts to the sum of:

**TOTAL BASE BID (INCLUDES REF. NO. 1 THRU REF. NO. 55)** ----->

Item No.'s that do not have an IB or SP designation are items drawn from the 2016 ODOT CMS. Bidders should refer to the 2016 ODOT CMS for information and guidance concerning these items.