



**OHIO TURNPIKE AND  
INFRASTRUCTURE COMMISSION**

**ADDENDUM NO. 3**  
**ISSUED: APRIL 22, 2021**

**PROJECT NO. 58-21-03**

**PART A: TOLL PLAZA 64 EXPANSION PLANS, MILEPOST 64.9, WOOD COUNTY, OHIO**  
**PART B: TOLL PLAZA 152.2 EXPANSION PLANS, MILEPOST 152.2, LORAIN COUNTY, OHIO**  
**ISSUED: APRIL 7, 2021**

**OPENING DATE: 2:00 P.M. (EASTERN TIME), MAY 12 ~~APRIL 28~~, 2021**

**ATTENTION OF BIDDERS IS DIRECTED TO:**  
**ANSWERS TO QUESTIONS RECEIVED THROUGH 8:00 A.M. ON APRIL 22, 2021**

**MODIFICATIONS TO THE CONTRACT DOCUMENTS**

**EXTENSION OF THE BID OPENING TO 2:00 PM ON MAY 12, 2021**

Issued by the Ohio Turnpike and Infrastructure Commission through Jennifer L. Stueber, Esq., General Counsel.

\_\_\_\_\_  
Jennifer L. Stueber, Esq.,  
General Counsel

April 22, 2021  
Date

**ANSWERS TO QUESTIONS RECEIVED THROUGH 8:00 A.M. ON APRIL 22, 2021:**

**Q#4 Is all of the pavement reinforcing rebar epoxy coating?**

*A#4 In accordance with the requirements of Special Provision SP 509, Plan Sheet A23 Note 1, and Plan Sheet B20 Concrete Pavement Detail, all reinforcing steel shall be epoxy coated.*

**Q#5 Is the reinforcing rebar in the additional 36”w x 9”d slab under expansion joints epoxy coated?**

*A#5 In accordance with the requirements of Special Provision SP 509, Plan Sheet A23 Note 1, and Plan Sheet B20, Concrete Pavement Detail, all reinforcing steel shall be epoxy coated.*

**Q#6 Is the rebar in the toll island epoxy coated?**

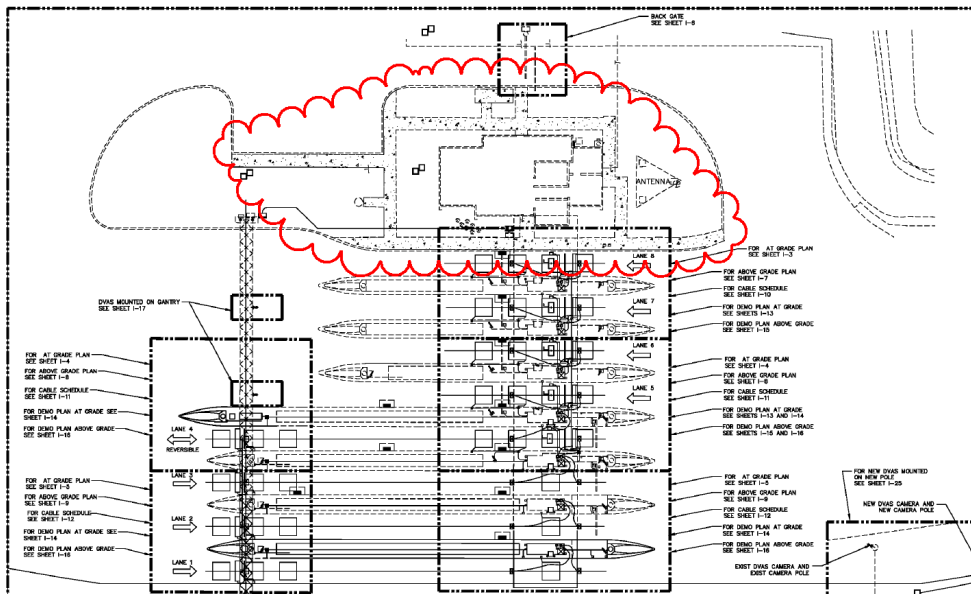
*A#6 In accordance with the requirements of Special Provision SP 509, Plan Sheet A39 Note 2, and Plan Sheet B35 Note 2, all reinforcing steel shall be epoxy coated.*

**Q#7 Is the wire mesh in the toll island epoxy coated?**

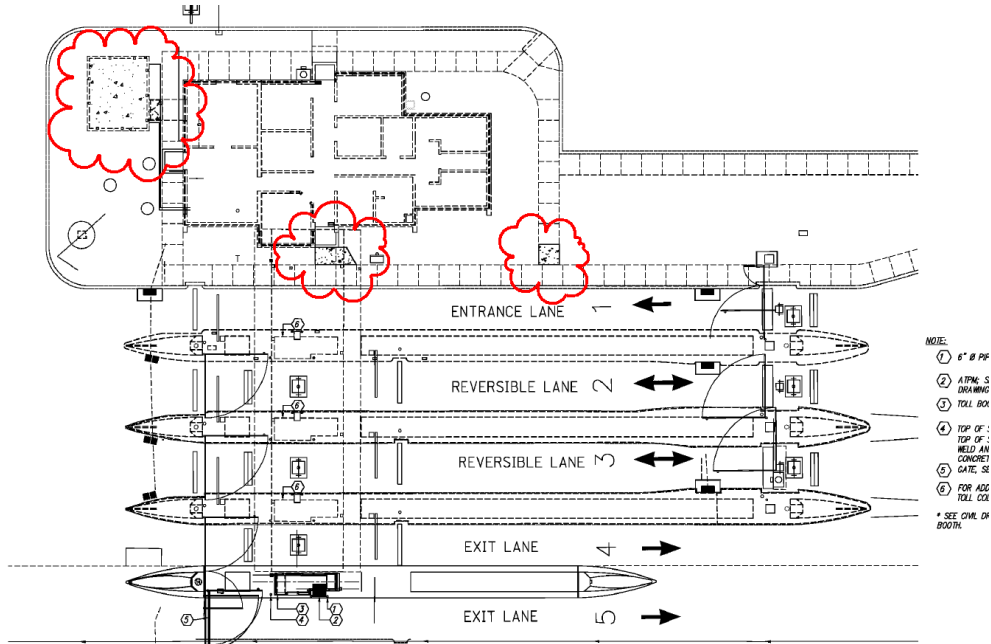
*A#7 In accordance with the requirements of Special Provision SP 509, Plan Sheet A38 Note 1, and Plan Sheet B34 Note 1, all reinforcing shall be epoxy coated.*

**Q#8 Are these sidewalks new and a part of this project? If so, is there a detail for sidewalk?**

64



152



A#8 *The sidewalk removal and replacement limits are shown on Plan Sheet A20 (C-11) for Toll Plaza 64 and Plan Sheet B18 (C-9) for Toll Plaza 152. It is not anticipated to remove and replace any sidewalk beyond what is shown on the referenced sheets.*

**END OF ADDENDUM NO. 3**