

9-15-55

*Charts attached  
herein*

OHIO TURNPIKE COMMISSION

Resolution No. 55-1955 Adopting Organization Charts

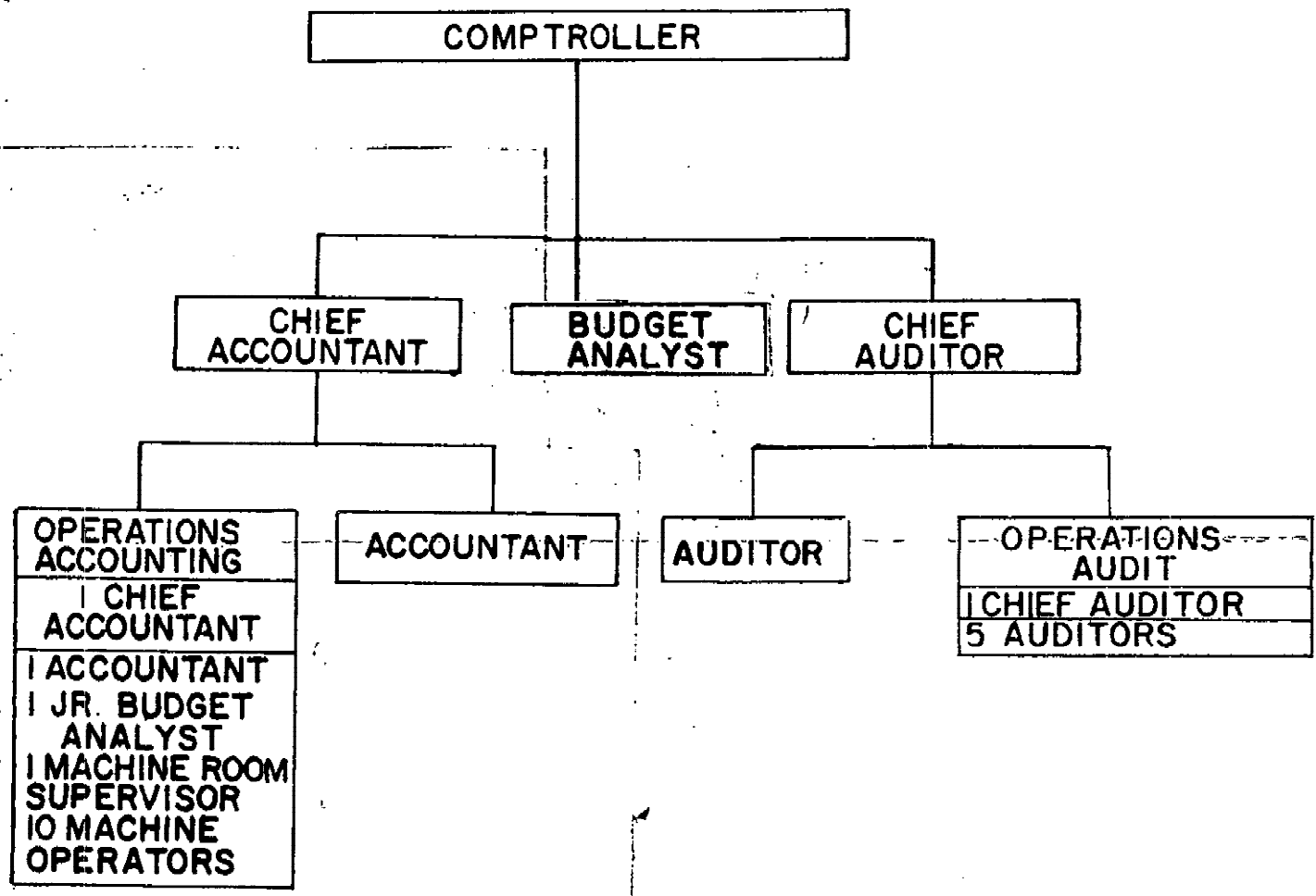
WHEREAS the Commission has considered the adoption of certain organization charts which are now before the Commission at this meeting, and which are designated, respectively, "Ohio Turnpike Commission Organization Chart A, September 15, 1955"; "Ohio Turnpike Commission Organization Chart A-1, Construction Department, September 15, 1955"; "Ohio Turnpike Commission Organization Chart A-2, Operations Department of Project No. 1, September 15, 1955"; and "Ohio Turnpike Commission Organization Chart A-3, Accounting and Auditing Department, September 15, 1955"; and

WHEREAS the Commission's executive director has recommended the adoption of said charts, and the Commission finds the adoption thereof to be highly desirable and in its best interest;

NOW, THEREFORE, BE IT

RESOLVED that the aforesaid Ohio Turnpike Commission charts of organization be, and they hereby are, adopted effective as of this date.

- Copy hereof distributed 9-16-55 to:
- Executive Director
- Chief Engineer (5)
- Project Manager
- Comptroller
- Purchasing Agent
- Insurance Administrator
- Personnel Administrator
- Ohio National Bank
- Consulting Engineer (3)
- Director of Information and Research



OHIO TURNPIKE COMMISSION  
 ORGANIZATION CHART A-3  
 ACCOUNTING & AUDITING DEPT.  
 SEPTEMBER 15, 1955

CHIEF ENGINEER  
ASSISTANT CHIEF ENGINEER

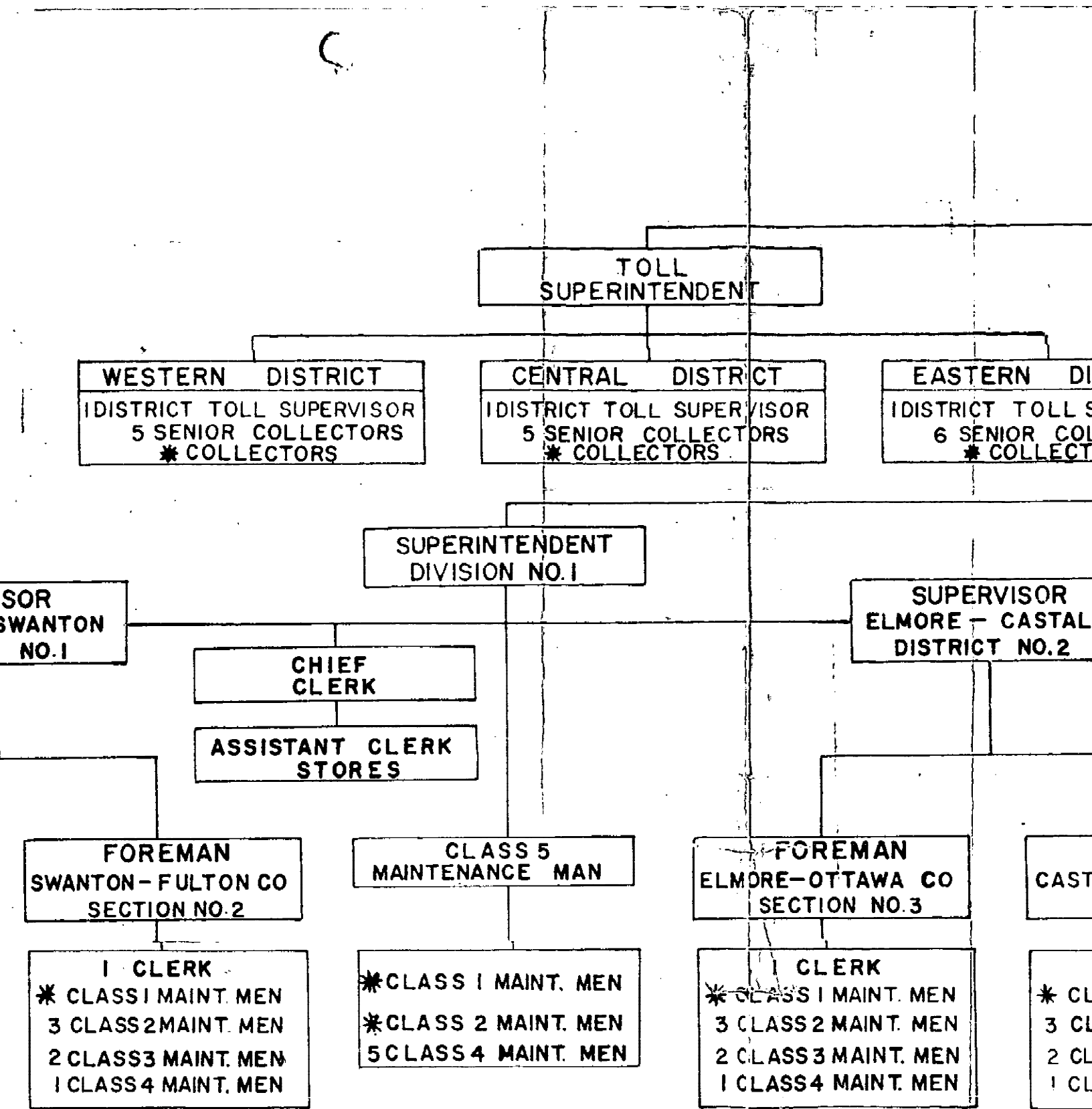
STAFF ENGINEERS	FIELD SUPERVISION AND INSPECTION
	HYDRAULICS
	STRUCTURES
	TRAFFIC & SAFETY
	TRAFFIC ANALYSIS
	DESIGN
	CONSTRUCTION
	PLANS AND SPECIFICATIONS
	MATERIALS
	SOILS
	GEOMETRICS

CLERK OF SALES

DRAFTSMEN

OFFICE MANAGER

RETAINED ENGINEERS AND CONSULTANTS	GENERAL ENGINEERING CONSULTANTS
	PROJECT ENGINEERS
	ARCHITECTS
	TESTING LABORATORY
	SPECIALIZED CONSULTANT

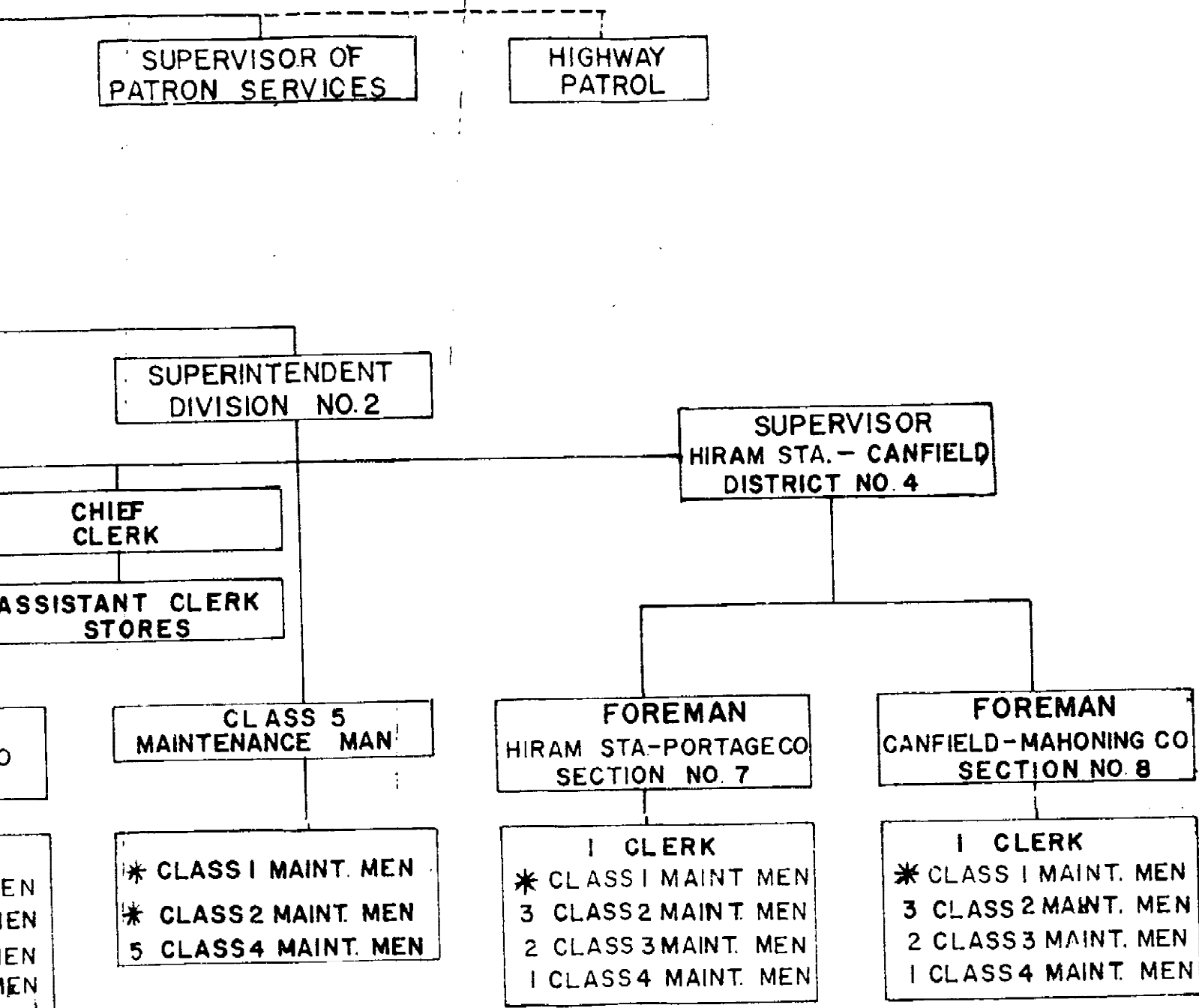


Facilities are provided in Section No.2 garage for:  
 1- Section 2 Maintenance  
 2-Highway Patrol  
 3-District Supervisor

\* Indicates personnel as may be needed

Facilities are provided in Section No.3 garage for:  
 1-Section 3 Maintenance  
 2-Division 1 Office  
 3-Class 5 Maint. Man

Facilities are provided in Section No.2 garage for:  
 1-Section 2 Maintenance  
 2-Highway Patrol  
 3-District Supervisor



EN  
EN  
EN  
EN

ded  
S  
ance

\* Indicates personnel as may be needed

Facilities are provided in Section No. 7 garage for:  
 1-Section 7 Maintenance  
 2-Division 2 Office  
 3- Class 5 Maint. Man  
 4-Highway Patrol.

Facilities are provided in Section No. 8 garage for:  
 1-Section 8 Maintenance  
 2-District Supervisor

OHIO TURNPIKE COMMISSION  
 ORGANIZATION CHART A-2  
 OPERATIONS DEPARTMENT  
 of PROJECT NO. 1  
 SEPTEMBER 15, 1955

