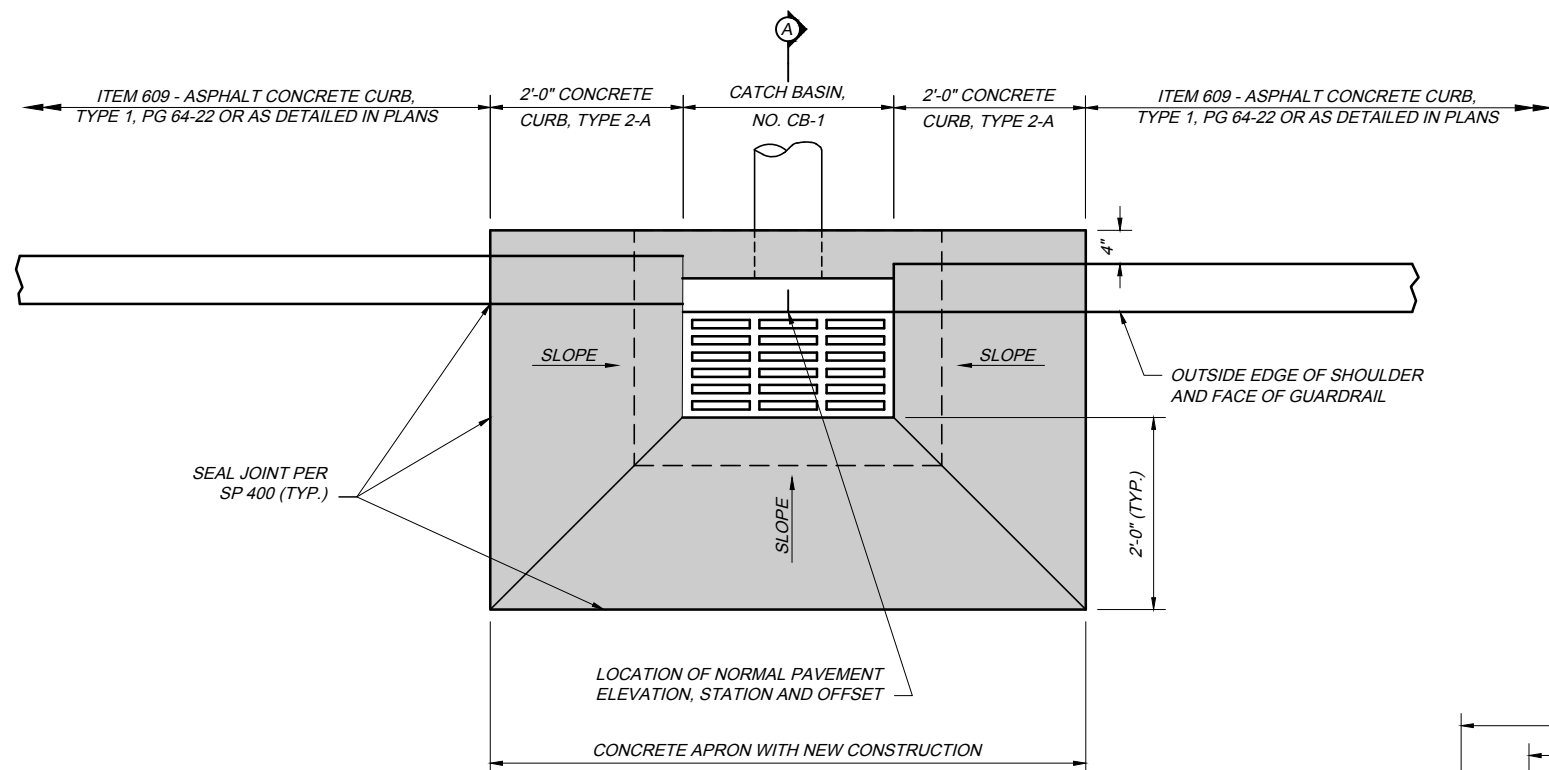
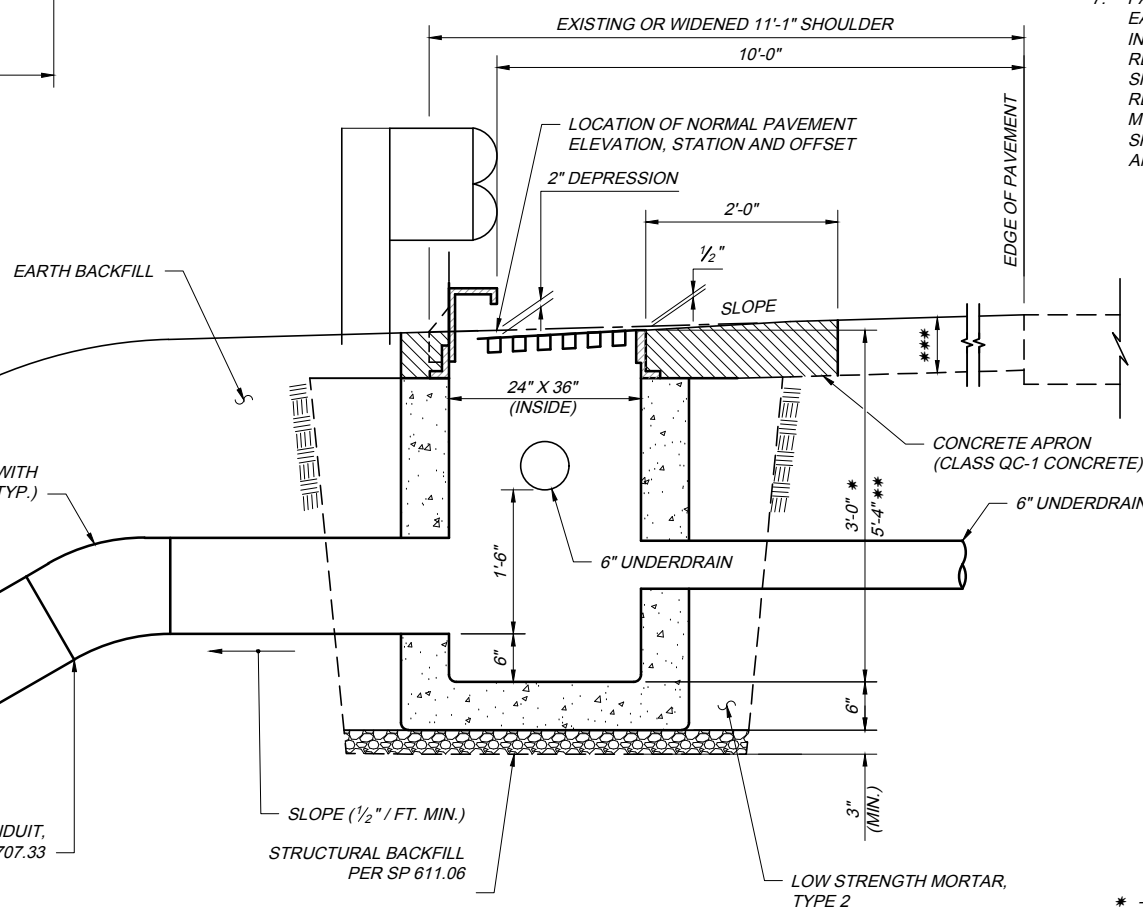


NOTES:

1. GRATE AND CASTING: THE GRATE AND CASTING SHALL BE A NEENAH FOUNDRY CO., MODEL NO. R-3246 (HEAVY DUTY), EAST JORDAN IRON WORKS, MODEL NO. 7030 (HEAVY DUTY) OR AN APPROVED EQUAL. THE FOLLOWING TEXT SHALL BE CAST INTO THE TOP OF THE GRATE: **"DUMP NO WASTE"** AND **"DRAINS TO WATERWAY"**. TEXT SHALL BE PRINTED IN BOLD, CAPITAL LETTERS WITH A MINIMUM HEIGHT OF 1/2". **"WATERWAY"** MAY BE SUBSTITUTED WITH **"STREAM"**, **"RIVER"**, **"LAKE"**, ETC. ACTUAL PLACEMENT AND LOGO MAY VARY PER MANUFACTURER. MASONRY BLOCKS SHALL NOT BE USED TO RAISE THE FRAME. THE BASE OF THE FRAME SHALL BE SET IN A FULL BED OF PORTLAND CEMENT MORTAR AND ADJUST IT TO CONFORM TO THE FINISHED SHOULDER ELEVATION AND SLOPE.
2. PRECAST CONSTRUCTION: THE STRUCTURE SHALL BE A PRECAST CONSTRUCTION MEETING SP 611.10 AND 706.13. PRECAST WALLS SHALL HAVE A MINIMUM THICKNESS OF 6" AND REINFORCING SHALL BE SUFFICIENT TO PERMIT SHIPPING AND PLACEMENT WITHOUT DAMAGE. THE STRUCTURE SHALL BE PLACED ON 3" OF COMPACTED STRUCTURAL BEDDING PER SP 611.06. BACKFILL MATERIAL SHALL BE IN ACCORDANCE WITH ITEM 613 - LOW STRENGTH MORTAR, TYPE 2.
3. STEPS: PROVIDE STEPS WHERE THE DEPTH EXCEEDS 6". STEPS SHALL BE IN ACCORDANCE WITH ODOT STANDARD DRAWING MH-1.1
4. OPENING: ALL PENETRATIONS THROUGH PRECAST DRAINAGE STRUCTURES SHALL BE EITHER MANUFACTURED OR CORED. ENSURE PIPE OPENINGS ARE THE O.D. OF THE PIPE BEING SUPPLIED PLUS 2 MINIMUM. MORTAR OR GROUT THE VOIDS PER SP 611.10. PIPE SHALL BE TRIMMED FLUSH WITH INSIDE OF BASIN OR EXTEND INTO THE BASIN 1" MAX.
5. CONCRETE APRON: CAST A QC-1 CONCRETE APRON WITH TYPE 2A CURB FOR LIMITS SHOWN.
6. CONDUIT: THE CONDUIT SHALL BE SP 611 - 12" CONDUIT, TYPE F, 707.33 USING STANDARD BENDS WITH BANDING PER THE MANUFACTURERS' RECOMMENDATIONS. WHEN TWO DIFFERENT PIPE MATERIALS ARE CONNECTED, PROVIDE A MASONRY COLLAR PER ODOT STANDARD DRAWING DM-1.1.
7. PAYMENT: PAYMENT WILL BE MADE AT THE UNIT PRICE BID PER EACH FOR SP 611 - CATCH BASIN, NO. CB-1 AND SHALL INCLUDE ALL MATERIALS, EXCAVATION, EMBANKMENT, REINFORCING STEEL, CASTINGS, RECONSTRUCTED PAVED SHOULDER AND/OR CONCRETE APRON WITH CONCRETE CURB, RECONSTRUCTED ADJACENT ASPHALT CURB, LOW STRENGTH MORTAR BACKFILL AND LABOR REQUIRED TO CONSTRUCT THE SP 611 - CATCH BASIN, NO. CB-1 AS SHOWN ABOVE, COMPLETE AND ACCEPTED.



PLAN VIEW



SECTION A-A

- \* - DEPTH WITHOUT UNDERDRAIN (MINIMUM)
- \*\* - DEPTH WITH UNDERDRAIN (PREFERRED)
- \*\*\* - THICKNESS OF PAVEMENT (MINIMUM)

CB-1 2019.12.31.dwg, 12/20/19 - 1:16pm