

DATE: OCTOBER 20, 2017

STANDARD DRAWING

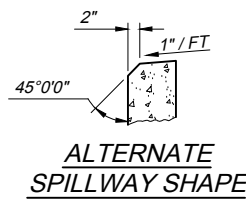
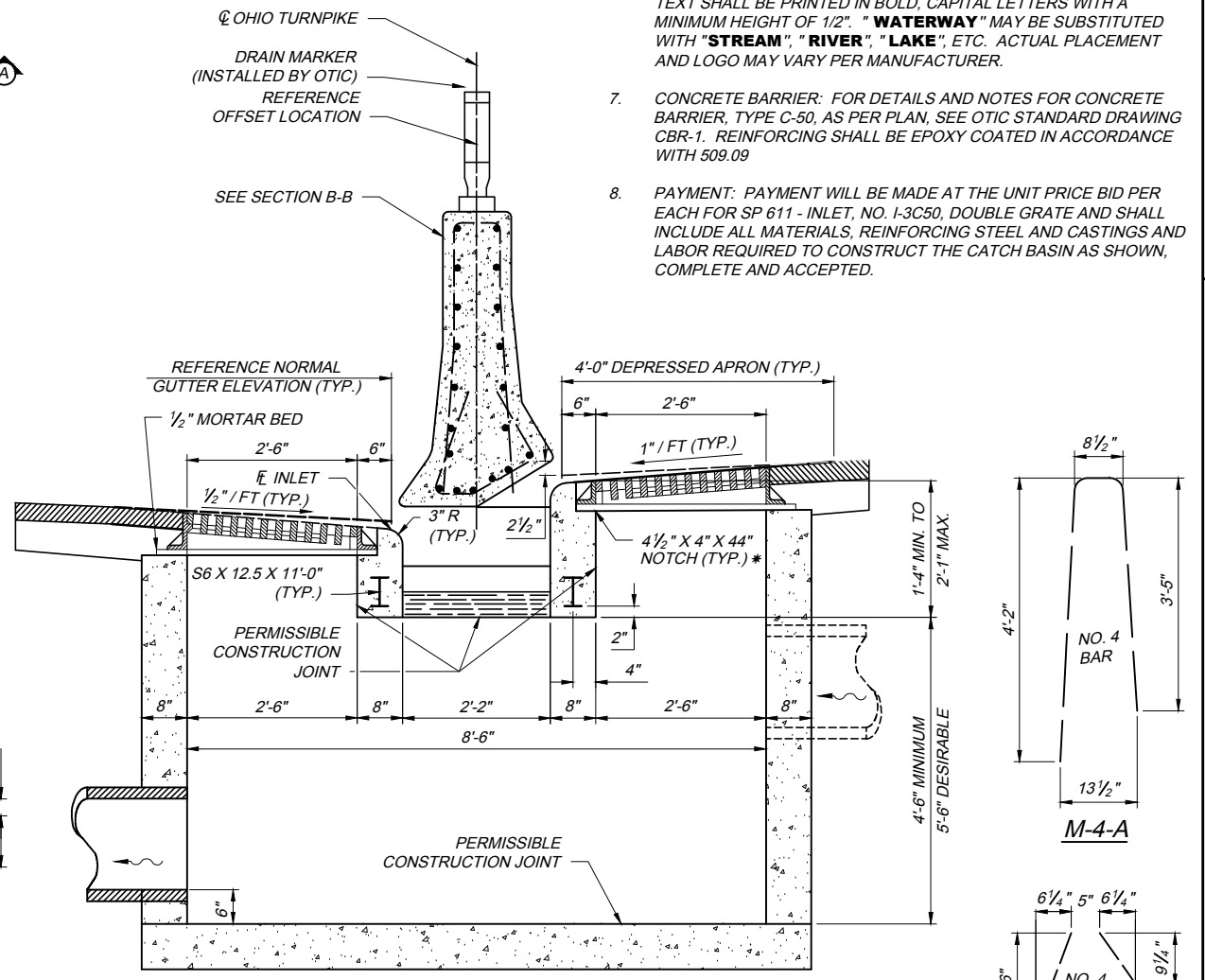
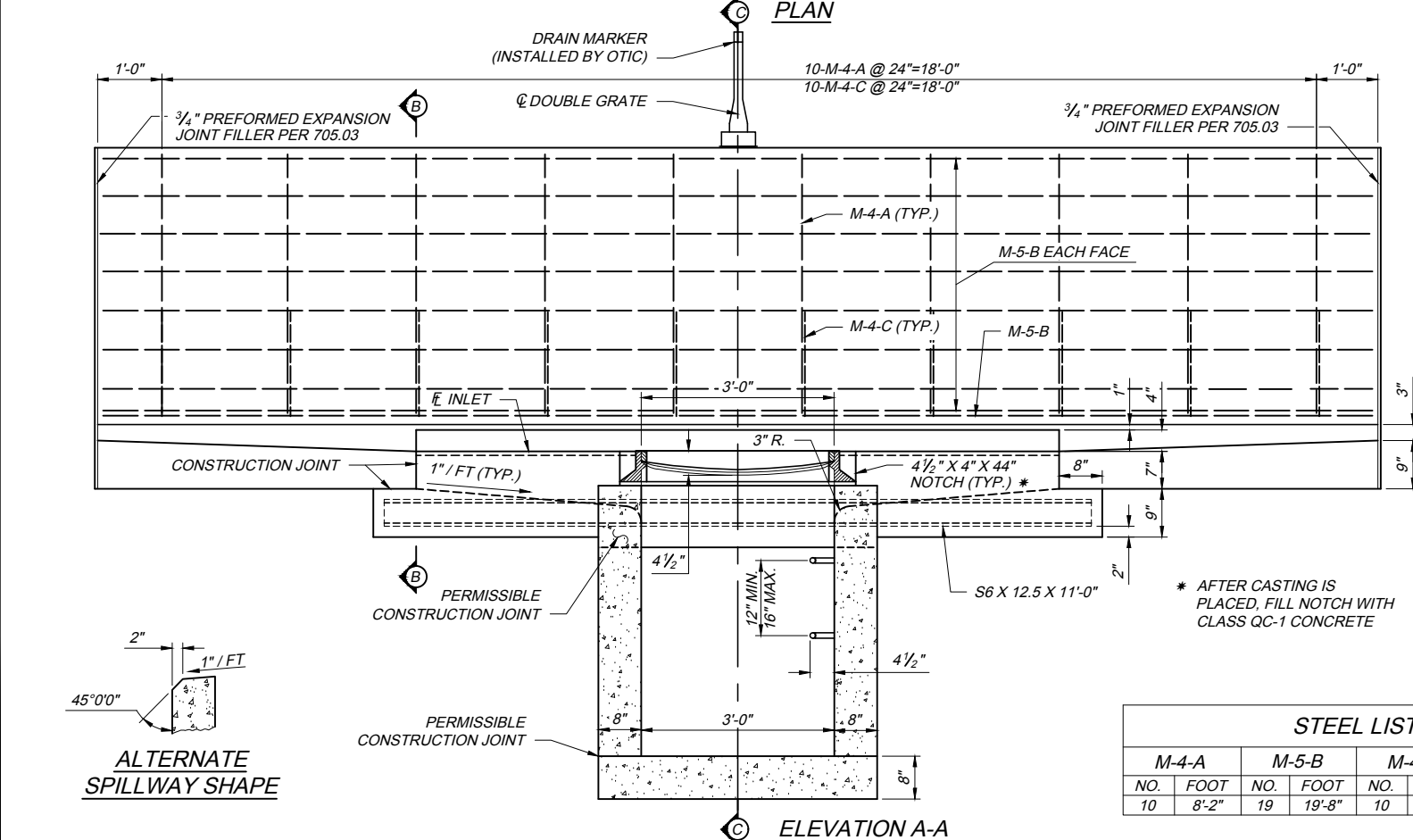
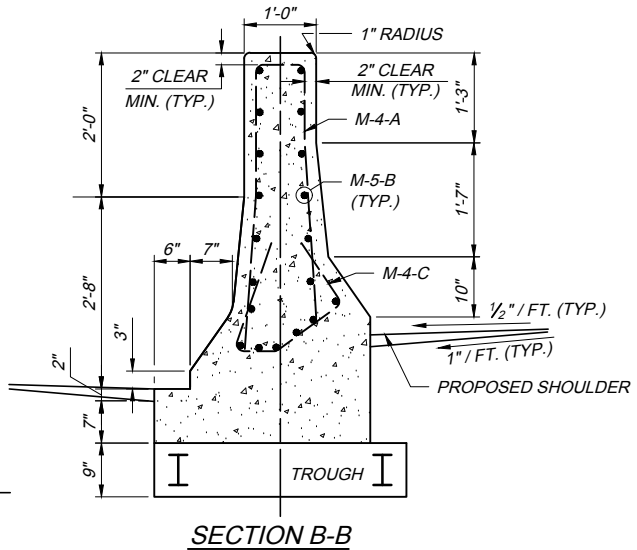
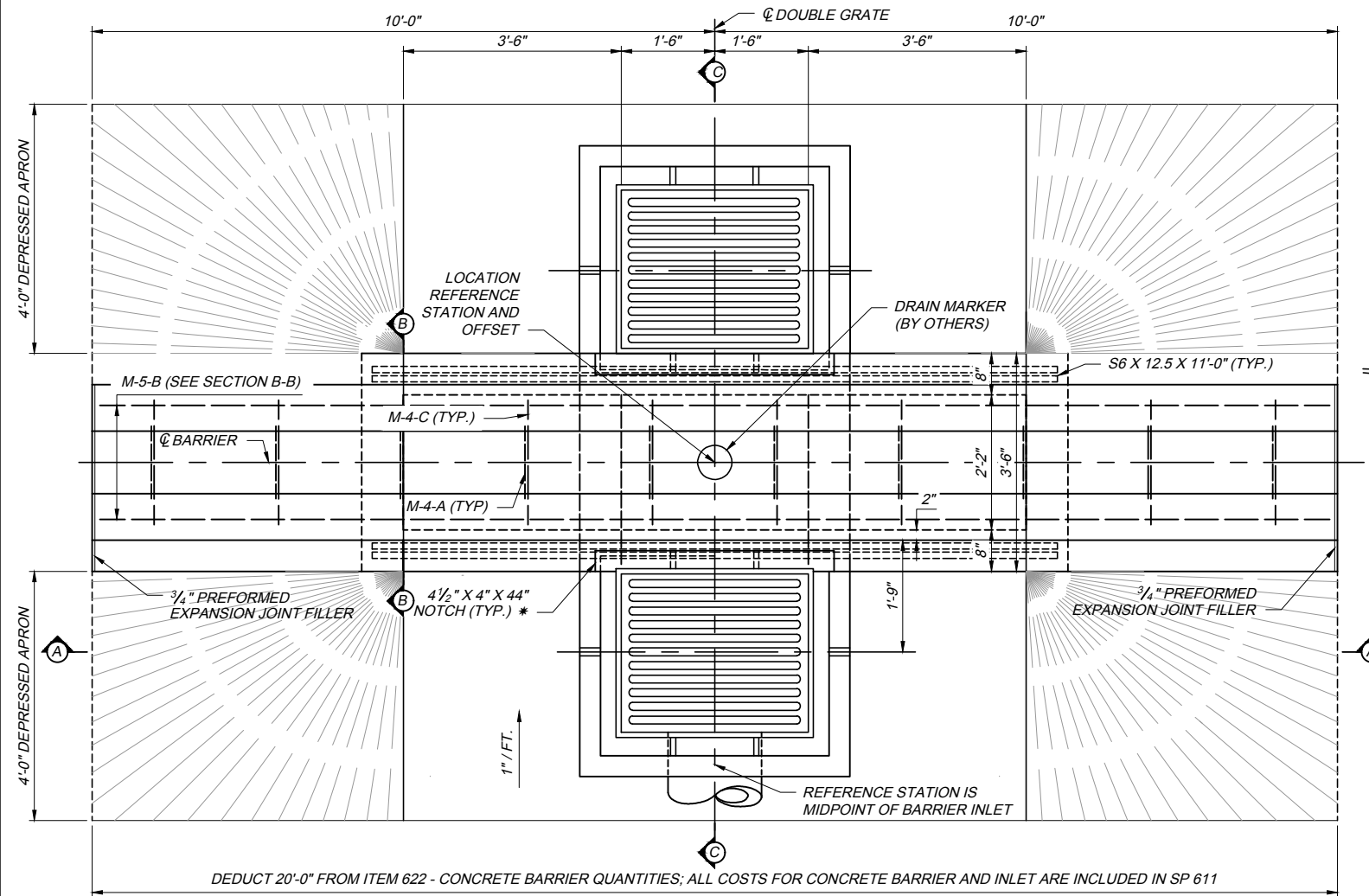
INLET, NO. 1-3C50  
DOUBLE GRATE

CB-5

1 / 1

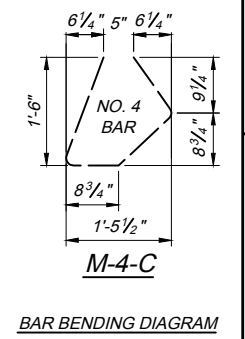
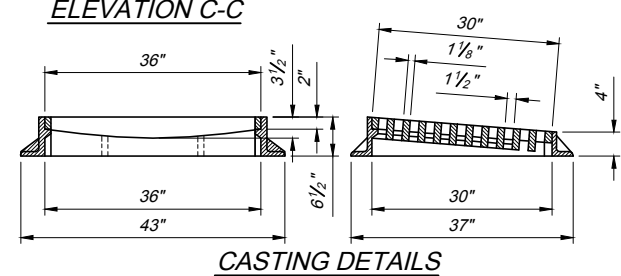
NOTES:

1. WALLS: THE WALLS BETWEEN THE BOTTOM SLAB AND THE UPPER PERMISSIBLE CONSTRUCTION JOINT MAY BE BUILT OF CAST-IN-PLACE CONCRETE OR PRECAST. CAST-IN-PLACE CONCRETE SHALL HAVE A WALL THICKNESS OF 8" NOMINAL FOR DEPTHS OF 12" OR LESS. PRECAST WALLS SHALL HAVE A MINIMUM THICKNESS OF 6" AND BE REINFORCED SUFFICIENTLY TO PERMIT SHIPPING AND HANDLING WITHOUT DAMAGE. THE UNIT ABOVE THE UPPER PERMISSIBLE CONSTRUCTION JOINT MAY BE PRECAST OR CAST-IN-PLACE.
2. CONCRETE: CAST-IN-PLACE, TO BE CLASS QC-1. ALL PRECAST CONCRETE SHALL MEET THE REQUIREMENTS OF 706.13 WITH 6 ± 2% AIR VOID CONTENT IN THE HARDENED CONCRETE. REQUIRED MARKINGS SHALL INCLUDE THE INLET NUMBER. PRECAST UNITS SHALL BE BACKFILLED WITH LOW STRENGTH MORTAR, TYPE 2 AS PER SP 611 AND ITEM 613.
3. STEPS AND CASTING: STEPS SHALL BE IN ACCORDANCE WITH ODOT STANDARD DRAWING MH-1.1. CASTING: MINIMUM WEIGHT OF FRAME AND COVER SHALL BE 540 POUNDS.
4. OPENINGS: PIPE OPENINGS SHALL BE O.D. PLUS 2" WHEN PREFABRICATED OR CORED. FILL ANY VOIDS PER SP 611.
5. INLETS OVER 12 FEET IN DEPTH: SUCH INLETS SHALL BE PRECAST OF CAST-IN-PLACE CONCRETE; REINFORCED WITH EPOXY COATED #4 BARS ON 12" CENTERS BOTH VERTICALLY AND HORIZONTALLY WITH 2" CLEARANCE FROM THE INSIDE WALL FACE.
6. THE FOLLOWING TEXT SHALL BE CAST INTO THE TOP OF THE GRATE: "DUMP NO WASTE" AND "DRAIN TO WATERWAY" TEXT SHALL BE PRINTED IN BOLD, CAPITAL LETTERS WITH A MINIMUM HEIGHT OF 1/2". "WATERWAY" MAY BE SUBSTITUTED WITH "STREAM", "RIVER", "LAKE", ETC. ACTUAL PLACEMENT AND LOGO MAY VARY PER MANUFACTURER.
7. CONCRETE BARRIER: FOR DETAILS AND NOTES FOR CONCRETE BARRIER, TYPE C-50, AS PER PLAN, SEE OTIC STANDARD DRAWING CBR-1. REINFORCING SHALL BE EPOXY COATED IN ACCORDANCE WITH 509.09
8. PAYMENT: PAYMENT WILL BE MADE AT THE UNIT PRICE BID PER EACH FOR SP 611 - INLET, NO. 1-3C50, DOUBLE GRATE AND SHALL INCLUDE ALL MATERIALS, REINFORCING STEEL AND CASTINGS AND LABOR REQUIRED TO CONSTRUCT THE CATCH BASIN AS SHOWN, COMPLETE AND ACCEPTED.



STEEL LIST

M-4-A	M-5-B	M-4-C	S6 X 12.5
NO.	FOOT	NO.	FOOT
10	8'-2"	19	19'-8"
		10	4'-4"
		2	11'-0"



CB-5 2017.10.20.dwg; 10/25/17 - 4.01pm