

- NOTES:**
- ELASTOMERIC COMPRESSION SEALS SHALL BE USED AT FIXED JOINTS ONLY, AND AT SKEWS LESS THAN 45 DEGREES.
 - STUDS SHALL BE LOW CARBON STEEL IN ACCORDANCE WITH ASTM A-108.
 - THE MINIMUM LENGTH OF RETAINER SHALL BE 6'-0" BETWEEN JOINTS UNLESS OTHERWISE SHOWN.
 - JOINTS IN EXTRUSIONS SHALL HAVE WATERTIGHT, PARTIAL PENETRATION BUTT WELDS COMPLETELY AROUND THE OUTER PERIPHERY OF THE ABUTTING SURFACES. WELDS WHICH WILL BE IN CONTACT WITH THE SEAL AND/OR ANCHOR PLATES SHALL BE GROUND SMOOTH.
 - CONTRACTOR SHALL VERIFY ALL DIMENSIONS PRIOR TO FABRICATION.
 - ELASTOMERIC COMPRESSION SEALS SHALL BE D.S. BROWN C-V 2000, ERIE METAL SPECIALTIES BR-200 OR APPROVED EQUAL.
 - CONTINUOUS STRIP SEALS SHALL BE AS MANUFACTURED BY WATSON-BOWMAN ACME, D.S. BROWN OR APPROVED EQUAL, AND SHALL BE THE SIZE AS SPECIFIED. SEE STRIP SEAL SELECTION TABLE ON STANDARD DRAWING DJ-2.
 - DETAILS AT DIAPHRAGMS SHOWN, DETAILS AT BEAMS OR GIRDERS SIMILAR.
 - TRANSVERSE JOINTS IN COMPRESSION SEAL ARMOR AND VERTICAL LEGS OF EXTRUSIONS SHALL HAVE FULL PENETRATION BUTT WELDS. WELDS WHICH WILL BE IN CONTACT WITH SEALS SHALL BE GROUND FLUSH.
 - ARMOR STEEL COATING: FINISHED STEEL ASSEMBLY SHALL BE METALIZED, SEE SP 533 OR SP 533A.
 - FOR SECTIONS B-B AND D-D, SEE STANDARD DRAWING DJ-2.

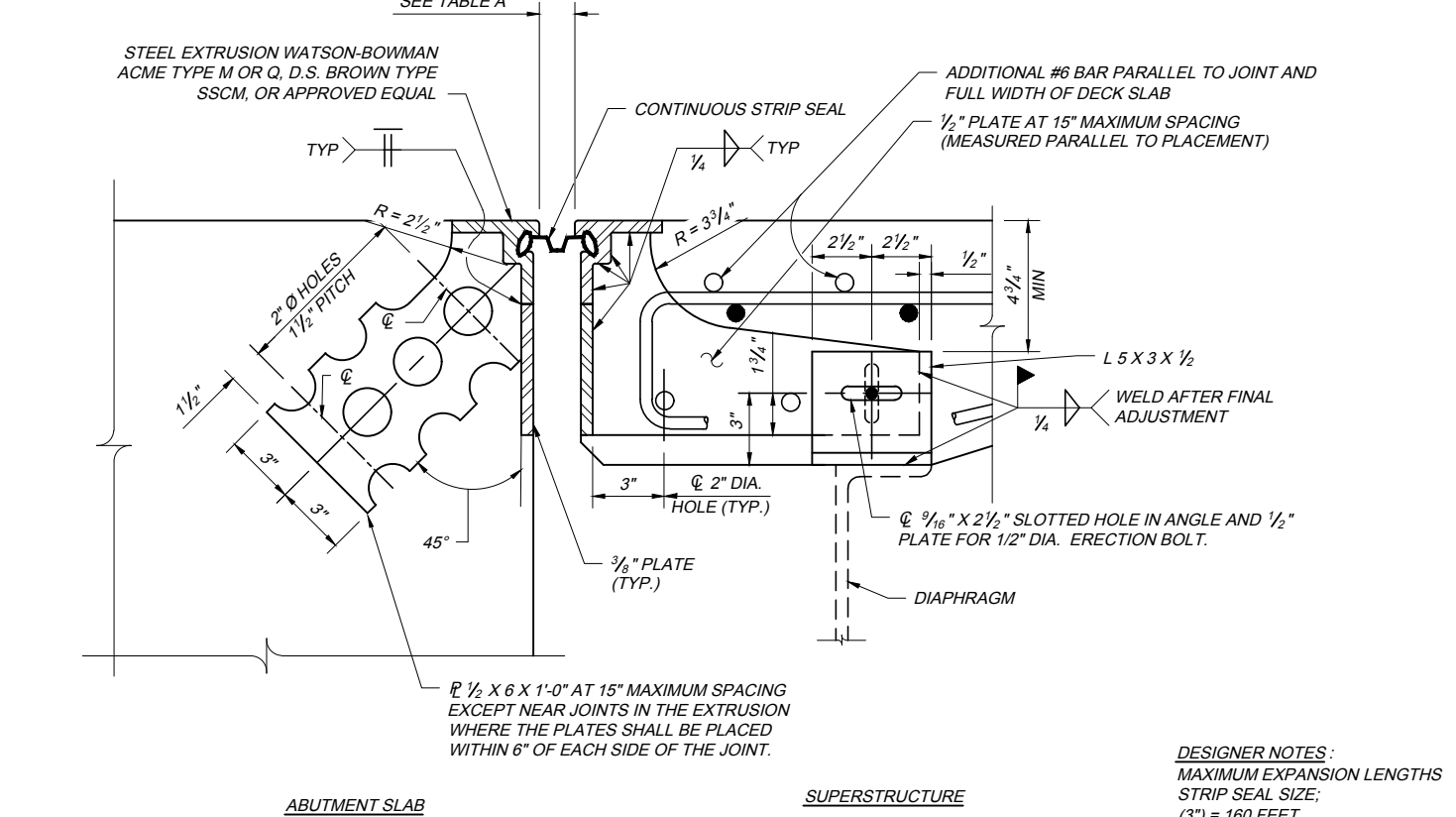
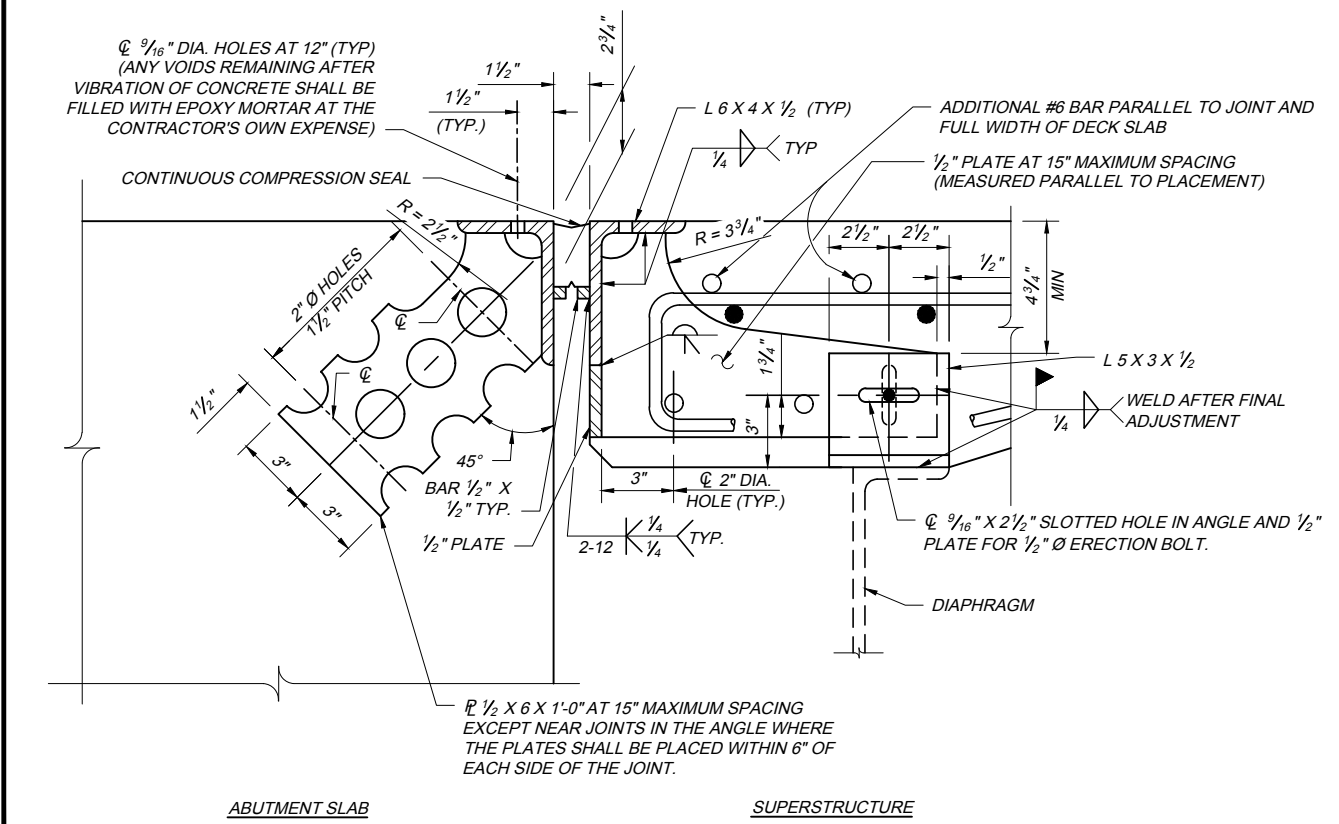
PLAN - SKEW ANGLE < 10°
(STRIP SEAL SHOWN, COMPRESSION SEAL SIMILAR)

PLAN - SKEW ANGLE 10° TO 45°
(STRIP SEAL SHOWN, COMPRESSION SEAL SIMILAR)
* NOTE TO DESIGNER: IF THIS DIMENSION IS LESS THAN 6", DETAIL AT PARAPET NEEDS TO BE DEVELOPED

PLAN - SKEW ANGLE > 45° (STRIP SEAL ONLY)
NOTE: WHEN SKEW ANGLE IS GREATER THAN 45°, FURNISH JOINT ASSEMBLIES IN TWO SECTIONS AND PROVIDE A FIELD SPLICE AT THE CENTERLINE OF ROADWAY. (STRIP SEAL SHOWN, COMPRESSION SEAL SIMILAR)

TABLE A

STRIP SEAL SIZE	STRIP SEAL JOINT OPENING						
	TEMPERATURE °F						
3"	2 1/4"	2 1/8"	2"	1 7/8"	1 3/4"	1 5/8"	1 1/2"
4"	3"	2 3/4"	2 5/8"	2 3/8"	2 1/4"	2 1/8"	1 7/8"
5"	3 1/2"	3 3/8"	3 1/8"	2 7/8"	2 5/8"	2 3/8"	2 1/8"



SECTION A-A (COMPRESSION SEAL)

SECTION A-A (STRIP SEAL)
WATSON-BOWMAN ACME TYPE M, OR D.S. BROWN TYPE SSCM EXTRUSIONS SHOWN.

DESIGNER NOTES:
MAXIMUM EXPANSION LENGTHS STRIP SEAL SIZE;
(3") = 160 FEET
(4") = 224 FEET
(5") = 304 FEET