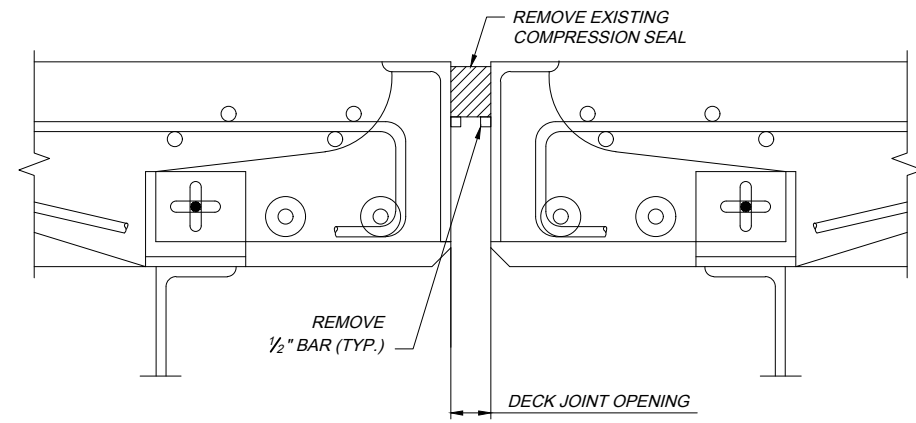
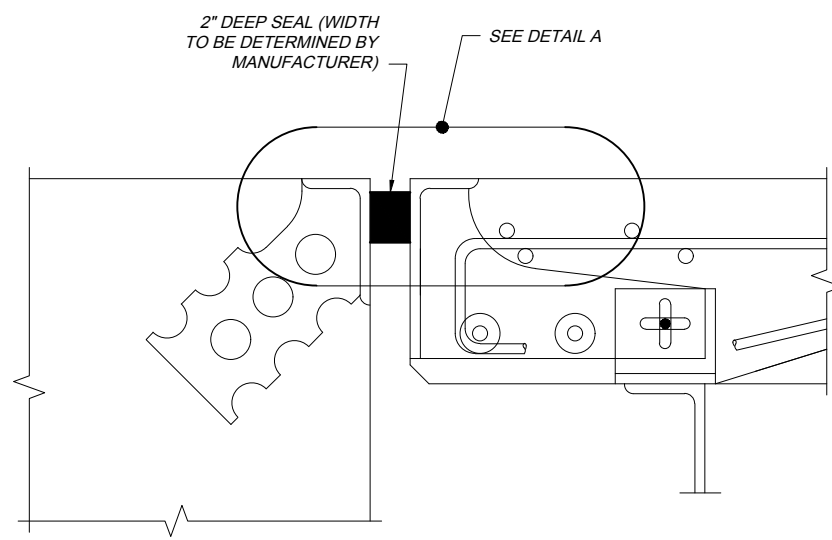


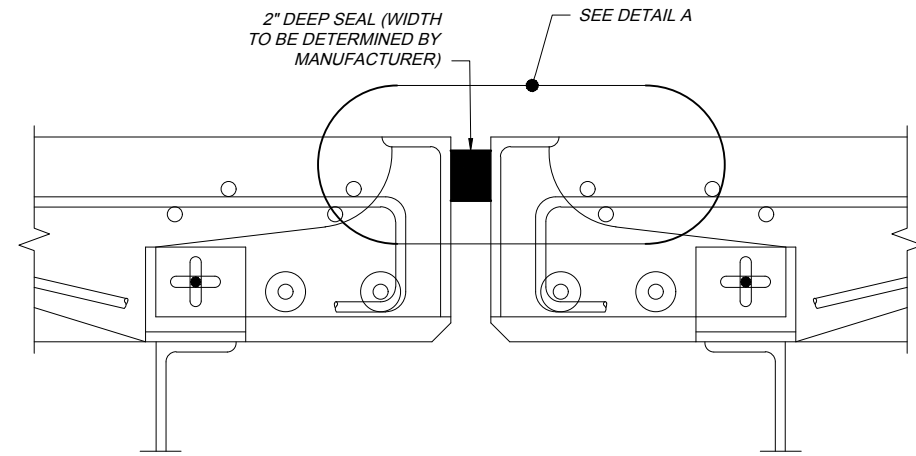
REMOVAL DETAILS
(ALL REINFORCING NOT SHOWN)



REMOVAL DETAILS



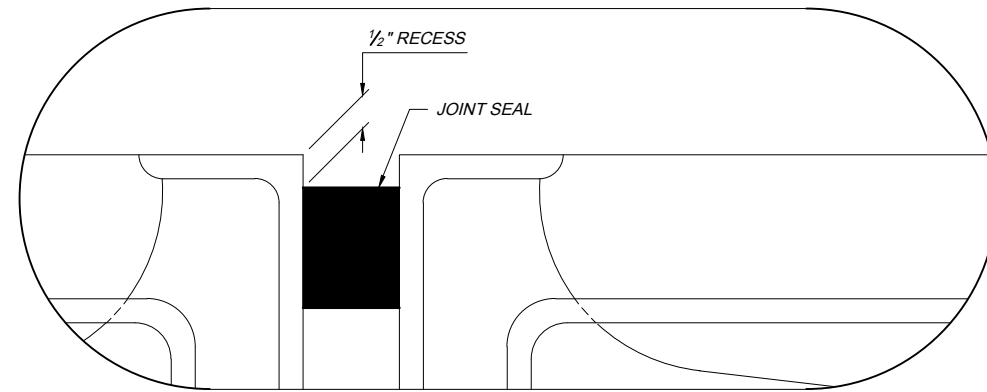
PROPOSED CONSTRUCTION DETAILS
(ALL REINFORCING NOT SHOWN)



PROPOSED CONSTRUCTION DETAILS

DETAIL AT ABUTMENT - EXISTING COMPRESSION SEAL

DETAIL AT PIER - EXISTING COMPRESSION SEAL



DETAIL A

NOTES:

THE CONTRACTOR SHALL VERIFY WITH THE SEAL MANUFACTURER THAT THE EXISTING JOINT OPENING AND THE AVAILABLE VERTICAL BONDING SURFACE ON THE EXISTING DECK JOINT ARE ALL APPROPRIATE FOR THE SEAL PRIOR TO ORDERING.

THE CONTRACTOR SHALL PAINT THE EXPOSED STEEL JOINT ARMOR PER SP 514A WITH PAYMENT INCLUDED IN SP 533F.

LEGEND

- REMOVAL LIMITS

NOTES TO DESIGNER:

- INCLUDE THE FOLLOWING SPECIAL PROVISIONS: SP 202, SP 514A, AND SP 533F.

- VERIFY WITH THE SEAL MANUFACTURER'S THAT THE EXISTING JOINT OPENING, THE EXPECTED JOINT MOVEMENT AND THE AVAILABLE VERTICAL BONDING SURFACE ON THE EXISTING DECK JOINT ARE ALL APPROPRIATE FOR BOTH SEAL TYPES BEFORE INCLUDING ITEM IN PLAN SET.

DJ-9 2021.01.07.dwg; 1/12/21

DATE: JANUARY 7, 2021

STANDARD DRAWING

DECK JOINT DETAILS SP 533F - REPLACEMENT OF COMPRESSION SEAL WITH CONTINUOUS ELASTOMERIC SEAL

DJ-9

1 / 1



OHIO TURNPIKE AND INFRASTRUCTURE COMMISSION

