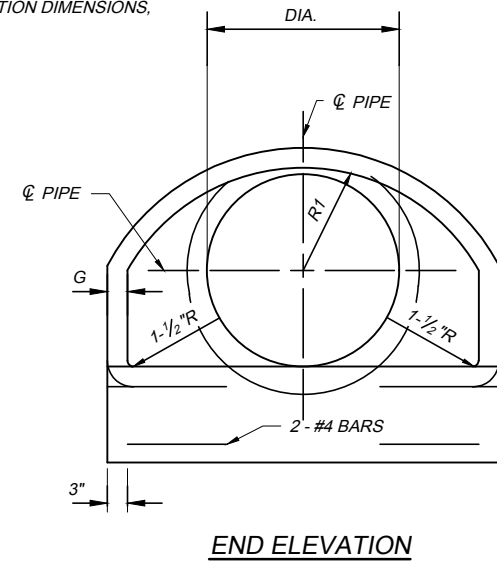
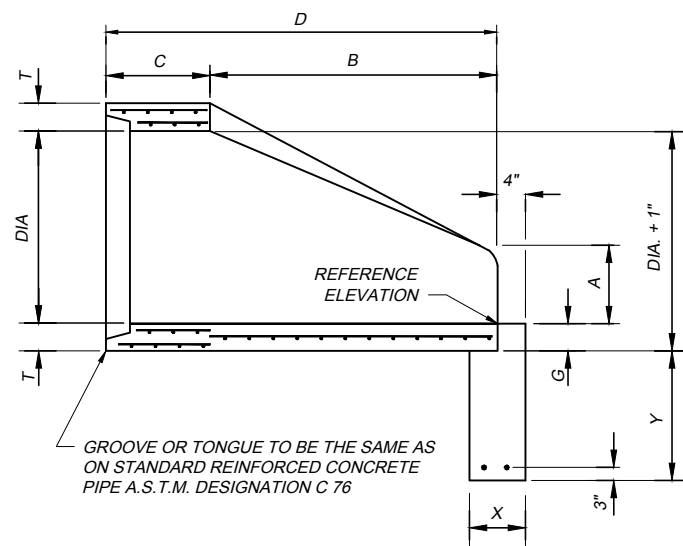
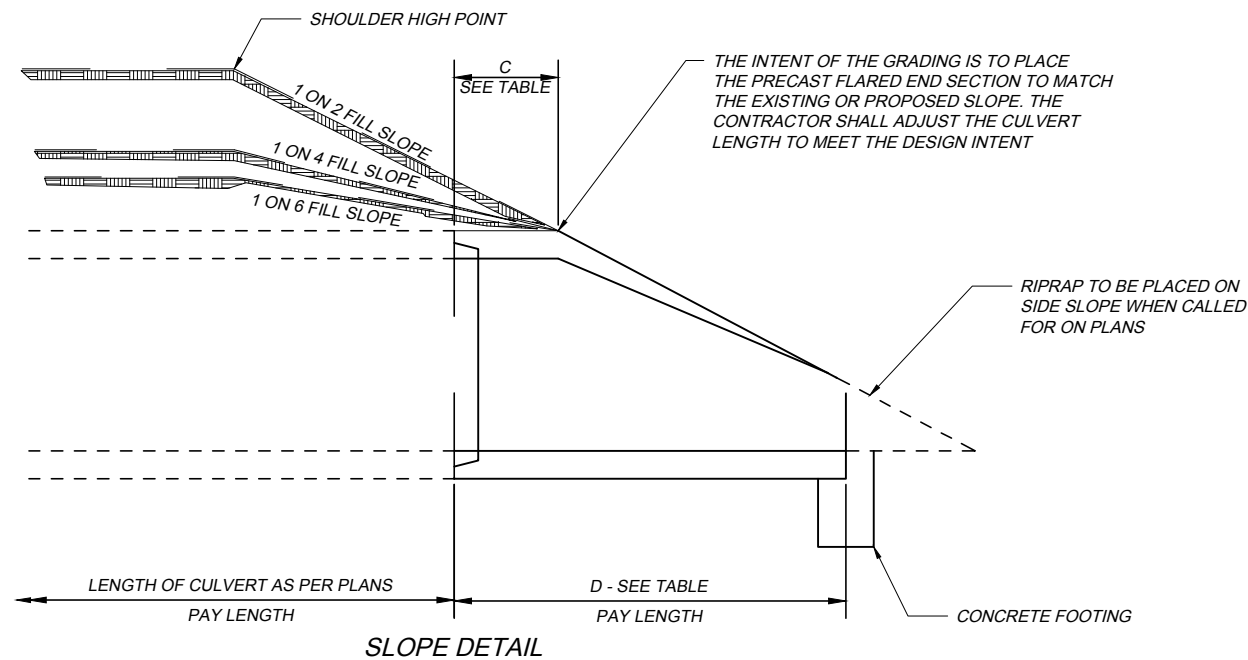


NOTE:
FOR END SECTION DIMENSIONS,
SEE TABLE.



LONGITUDINAL SECTION



SLOPE DETAIL

END SECTION DIMENSION TABLE												
DIA.	T (MIN.)	A (MIN.)	B (*)	C (*)	D (*)	E (*)	G	R1	R2	X	Y	APPROX. WT. LBS.
12"	2"	5"	23"	51"	74"	24"	2"	10 7/8"	9"	8"	28"	800
15"	2 1/4"	7"	24"	50"	74"	30"	2 1/4"	12 1/2"	11"	8"	28"	1100
18"	2 1/2"	11"	25"	49"	74"	36"	2 1/2"	15 1/2"	12"	8"	28"	1300
21"	2 3/4"	11"	33"	42"	75"	42"	2 3/4"	16 7/8"	13"	8"	28"	1500
24"	3"	12"	43"	32"	75"	48"	3"	16 3/16"	14"	8"	28"	1800
30"	3 1/2"	14"	53"	22"	75"	60"	3 1/2"	18 1/2"	15"	8"	28"	2400
36"	4"	17"	62"	37"	99"	72"	4"	24 5/16"	20"	8"	28"	4200
42"	4 1/2"	22"	62"	37"	99"	78"	4 1/2"	27 1/2"	22"	10"	28"	5600
48"	5"	24"	72"	28"	98"	84"	5"	28 1/2"	22"	10"	28"	7400
54"	5 1/2"	27"	65"	33 1/4" - 35"	98 1/4" - 100"	90"	5"	#	#	10"	28"	8040
60"	6"	30"	68"	39"	99"	96"	5"	#	#	12"	30"	8730
66"	6 1/2"	24"	72"-78"	21" - 27"	99"	102"	5 1/2"	#	#	12"	30"	10630
72"	7"	24"	78"	21"	99"	108"	8"	#	#	12"	30"	12520
78"	7 1/2"	24"	78"	21"	99"	114"	6 1/2"	#	#	12"	30"	14430
84"	8"	36"	90 1/2"	21"	111 1/2"	120"	6 1/2"	#	#	12"	30"	18160

* - TOLERANCE ± 1"

- RADIUS AS FURNISHED BY THE MANUFACTURER

WEIGHT SHOWN DOES NOT INCLUDE CONCRETE FOOTING.

NOTES:

1. CONCRETE IN THESE END SECTIONS SHALL BE THE SAME GRADE AND STRENGTH AS SPECIFIED FOR REINFORCED CONCRETE PIPE A.S.T.M. DESIGNATION C 76 CLASS II. EXCEPT AS MODIFIED BY THE STANDARD SPECIFICATIONS.
2. REINFORCEMENT IN THE "C" PORTION SHALL BE THE SAME AS SPECIFIED FOR REINFORCED CONCRETE A.S.T.M. DESIGNATION C 76 CLASS II FOR THE SIZE OF CONNECTING PIPE.
3. REINFORCEMENT IN THE "B" PORTION SHALL HAVE A CROSS-SECTIONAL AREA EQUAL TO THAT OF ONE LAYER OF STEEL IN THE "C" PORTION.
4. THE END OF THE PIPE CULVERT SHALL BE PLACED IN THE CONCRETE END SECTION SO THAT THE FLOW LINES ARE FLUSH. THE JOINT SHALL BE COMPLETELY FILLED WITH NON-SHRINK MORTAR PER 705.22.
5. TO CHANGE THE FILL SLOPE TO THE SLOPE OF THE END SECTION, USE A TRANSITION SLOPE OF APPROXIMATELY 10' IN LENGTH TO PROVIDE A PLEASING APPEARANCE.
6. VARIATIONS IN DIMENSIONS: THE THICKNESS OF THE CONCRETE, THE POSITION OF STEEL AND THE INTERNAL DIAMETER OF THE PIPE SHALL CONFORM WITH THE VARIATIONS IN DIMENSIONS AS PROVIDED IN THE SPECIFICATIONS FOR REINFORCED CONCRETE CULVERT, STORM DRAINS AND SEWER PIPE A.S.T.M. DESIGNATION C 76.
7. CAST IN PLACE CONCRETE FOOTING: REINFORCED CONCRETE FOOTING USING CLASS QC-1 CONCRETE WITH EPOXY COATED STEEL REBARS SHALL MEET THE THE REQUIREMENTS OF 499.03 AND 509.02.
8. PAYMENT WILL BE MADE AT THE UNIT PRICE BID PER EACH FOR ITEM SPECIAL - _ " PRECAST CONCRETE END SECTION AND SHALL INCLUDE THE COST OF ALL LABOR, EARTHWORK, FOOTING AND MATERIALS NECESSARY TO PLACEMENT OF THE PRECAST CONCRETE END SECTION.

DR-1 2017.10.20.dwg: 10/25/17 - 4:27pm

DATE: OCTOBER 20, 2017

STANDARD DRAWING

PRECAST FLARED
END SECTION

DR-1

1 / 1

OHIO TURNPIKE AND INFRASTRUCTURE COMMISSION

OHIO
TURNPIKE

OHIO
TURNPIKE