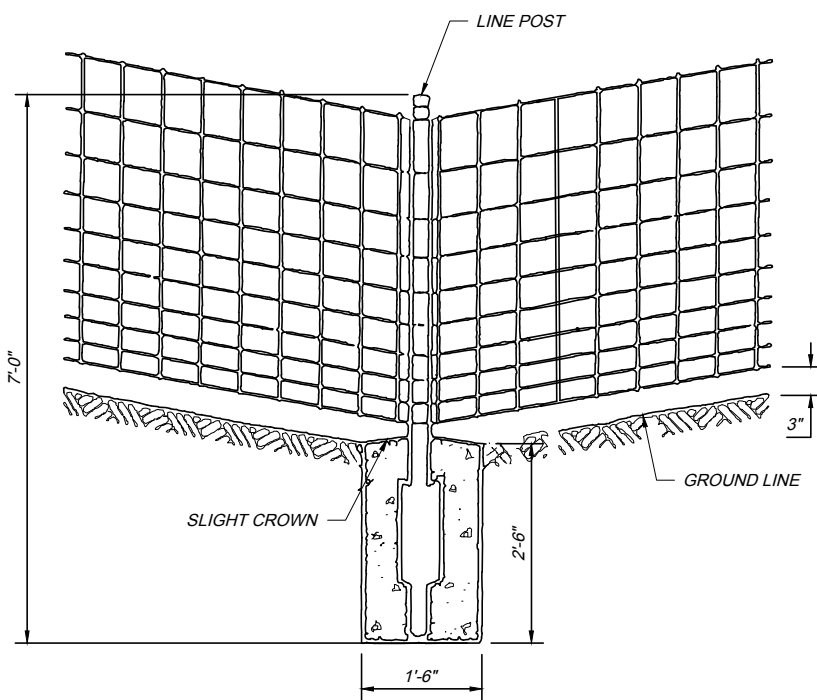


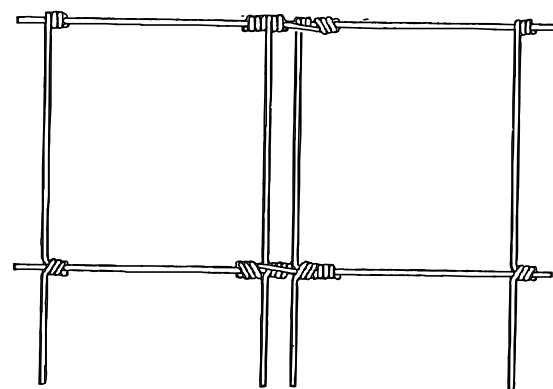
END POST ASSEMBLY
(SEE DETAIL A)

LINE POST

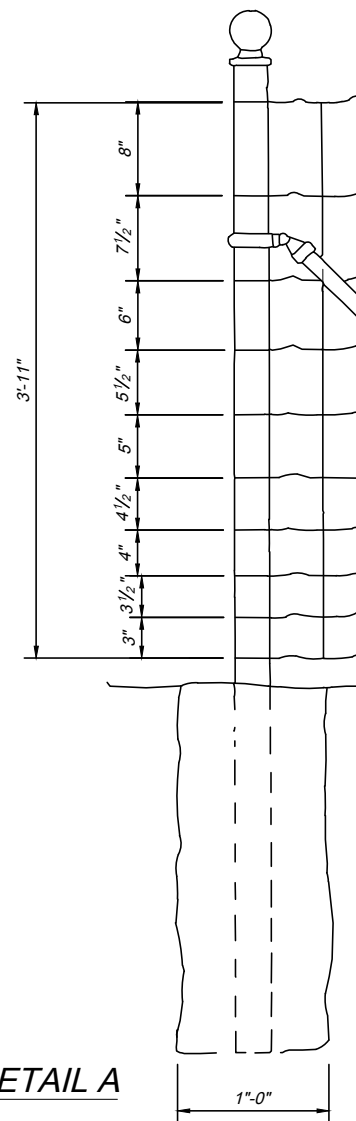
CORNER OR INTERMEDIATE ANCHOR POST ASSEMBLY (PULL POST)



LINE POST IN DIP SECTION



WIRE FENCE SPLICE



DETAIL A

NOTES:

- PULL POSTS TO BE USED AT SHARP BREAKS IN THE VERTICAL GRADES AT APPROXIMATELY 500' CENTERS ON STRAIGHT RUNS OF FENCE, OR AS DIRECTED BY THE CHIEF ENGINEER.
- WHERE RIGHT OF WAY FENCE FOLLOWS THE RIGHT OF WAY LINE, IT SHALL BE INSTALLED PARALLEL TO AND 1'-0" INSIDE THE RIGHT OF WAY LINE ON TURNPIKE PROPERTY.
- CONCRETE: THE PROVISIONS OF 511.12 ARE MODIFIED TO THE EXTENT THAT CONCRETE SHALL BE PROTECTED DURING THE CURING PERIOD IN A MANNER SUCH THAT IT WILL NOT FREEZE. CONCRETE SHALL BE CLASS QC-1 CONCRETE.
- FABRIC: OTHER METHODS FOR SPLICING WIRE FENCE MAY BE USED IN LIEU OF THE METHOD SHOWN, WHEN APPROVED BY THE CHIEF ENGINEER.
- GALVANIZING: ALL FENCING MATERIALS ARE TO BE GALVANIZED IN ACCORDANCE WITH 711.02.
- FOR GATE INSTALLATION, REFER TO ODOT STANDARD DRAWING F-1.1.
- FOR FENCE DETAILS AT BRIDGES, REFER TO ODOT STANDARD DRAWING F-3.1.
- FOR WALK GATES, REFER TO ODOT STANDARD DRAWING F-3.2.
- FOR FENCE TERMINALS, REFER TO ODOT STANDARD DRAWING F-3.3.
- FOR DITCH AND STREAM CROSSINGS, REFER TO ODOT STANDARD DRAWING F-3.4.
- PAYMENT: PAYMENT FOR ITEM 607 FENCE, TYPE 47, AS PER PLAN SHALL INCLUDE ALL MATERIALS LABOR, EQUIPMENT AND INCIDENTALS NECESSARY TO COMPLETE THE ITEM IN ACCORDANCE WITH ITEM 607 FENCE, EXCEPT AS MODIFIED HERE ON.

F-1 2021.01.07.dwg: 1/12/21