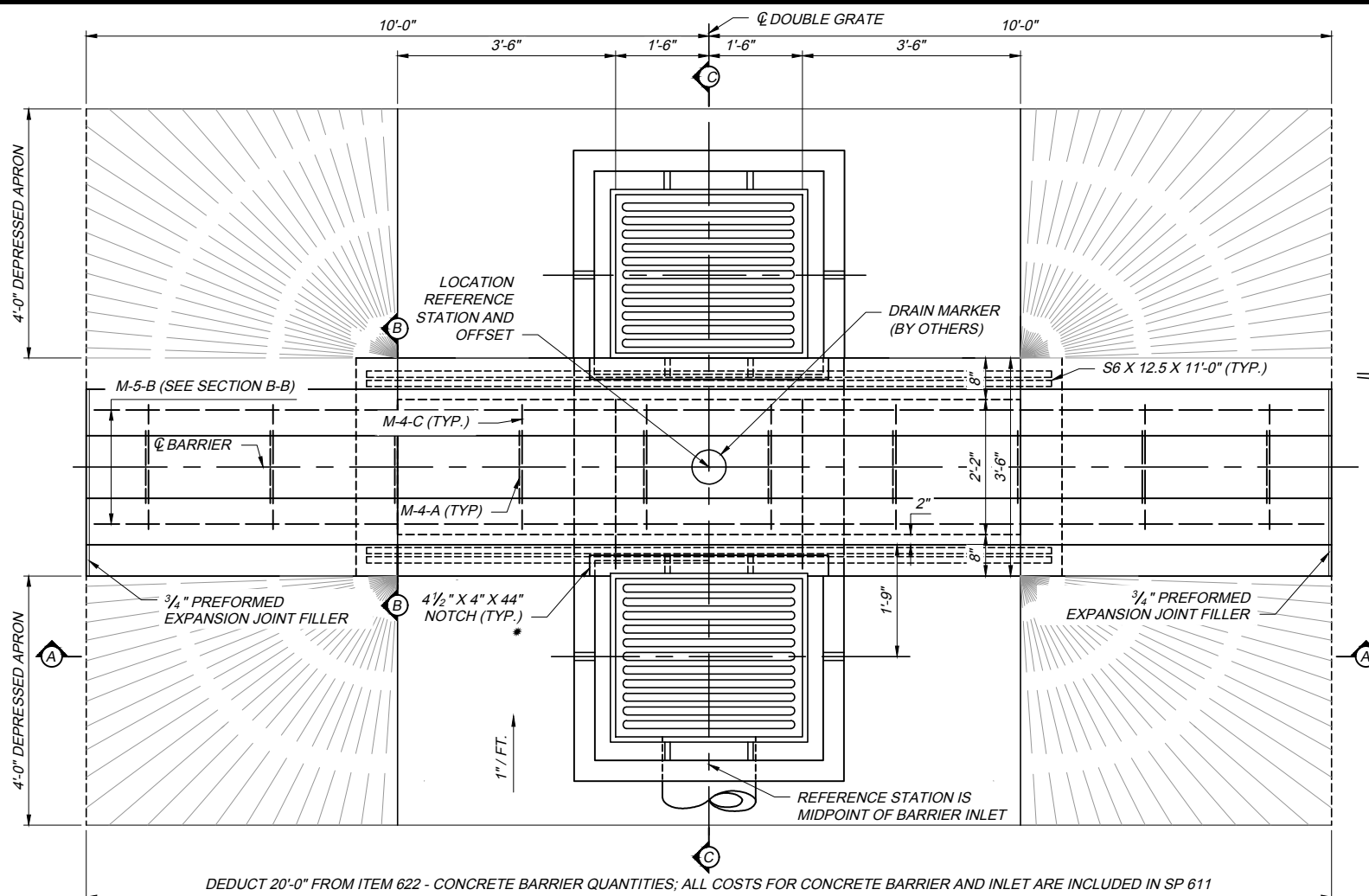
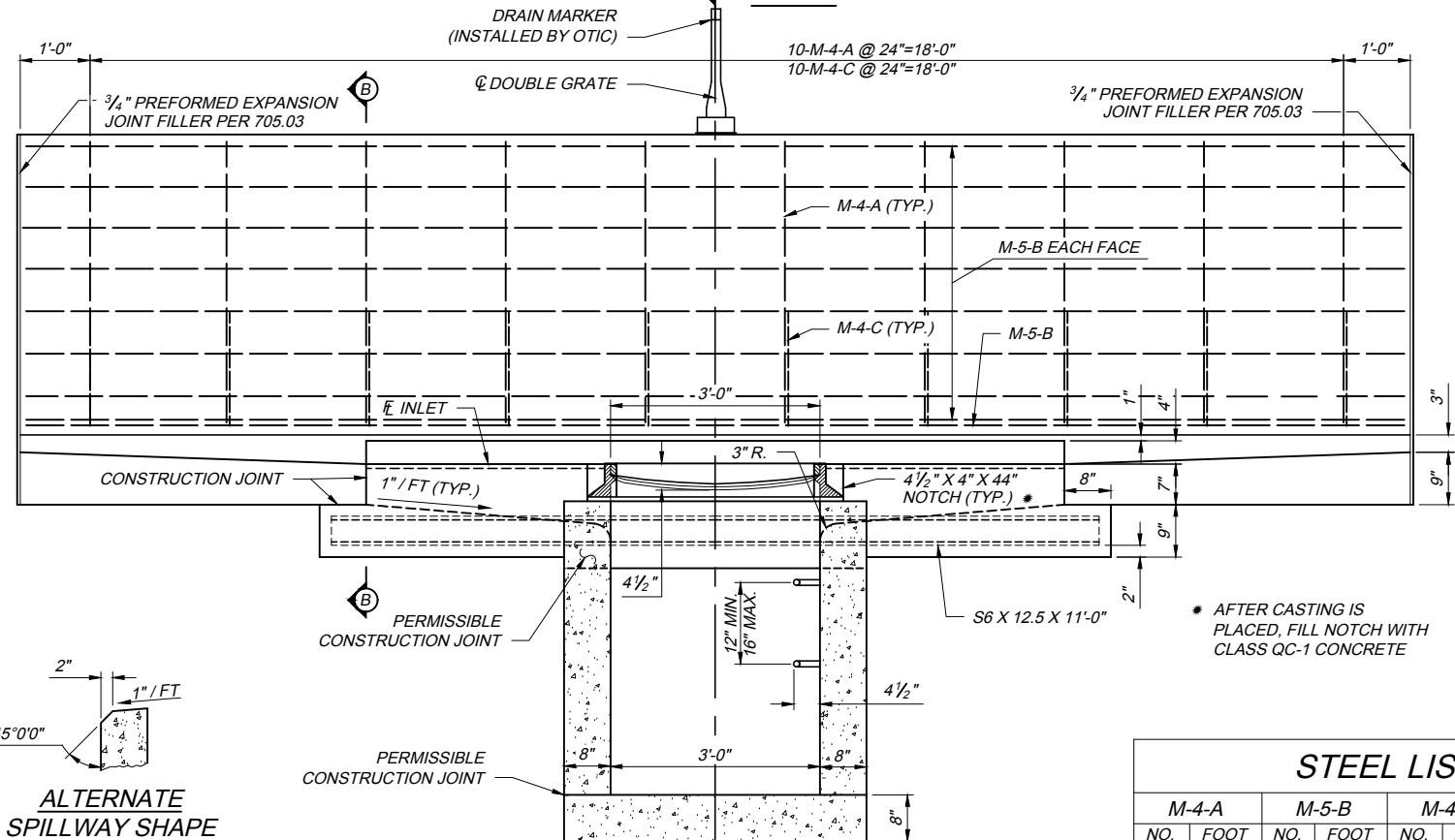


CB-5 2023.10.17.dwg. 10/18/23 - 11:41am

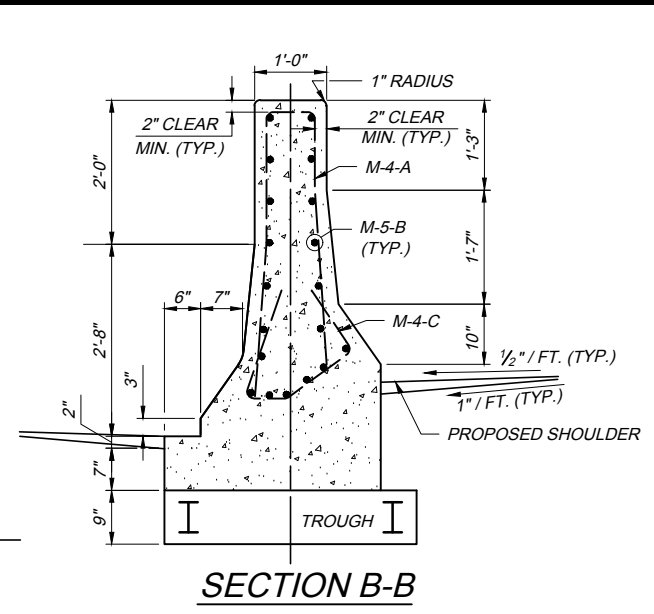


DEDUCT 20'-0" FROM ITEM 622 - CONCRETE BARRIER QUANTITIES; ALL COSTS FOR CONCRETE BARRIER AND INLET ARE INCLUDED IN SP 611

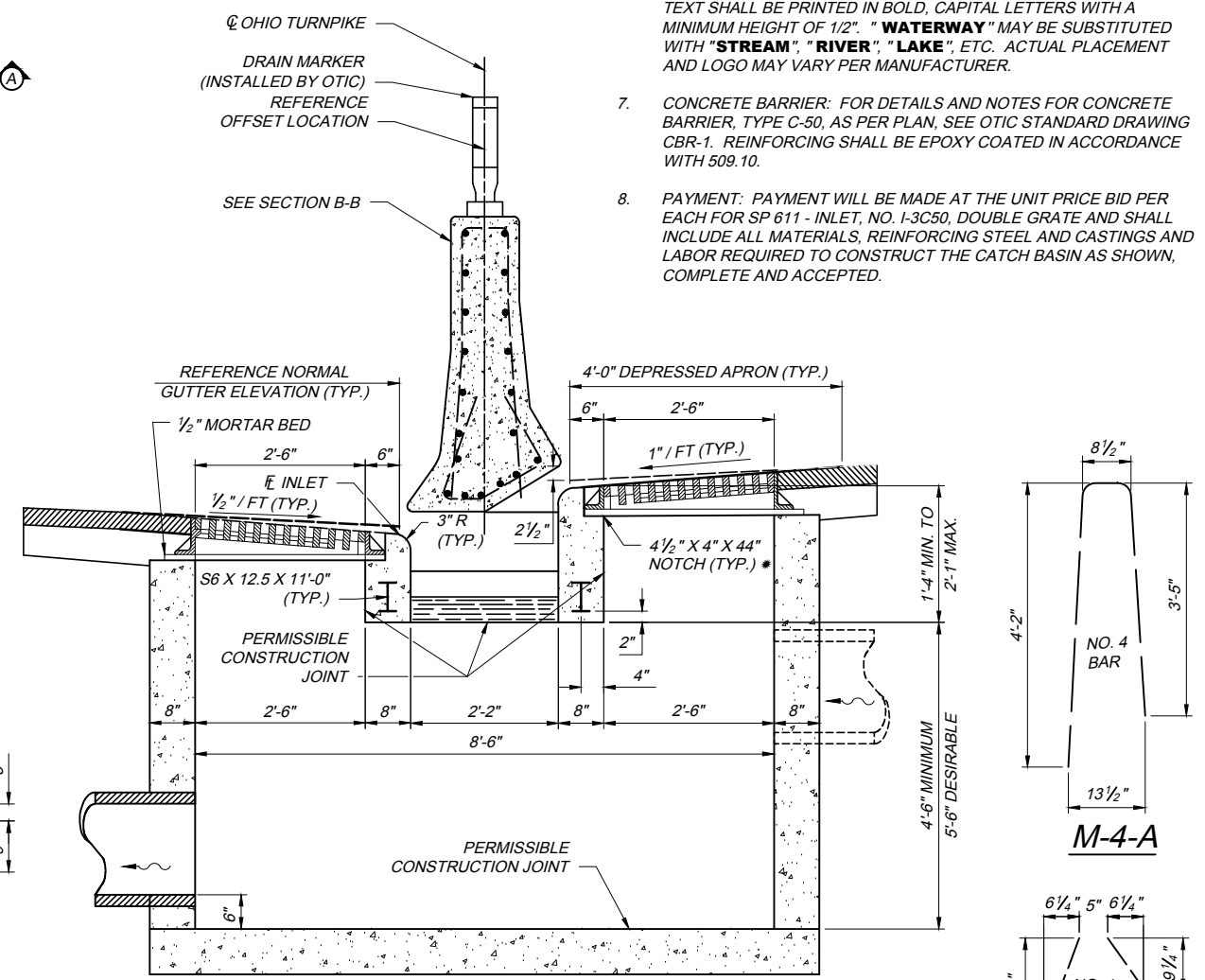
PLAN



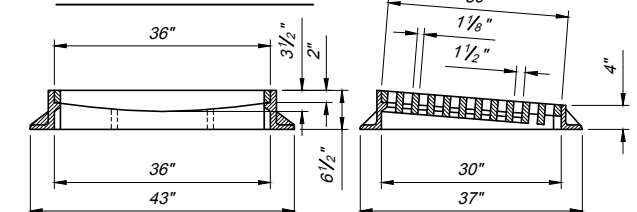
ELEVATION A-A



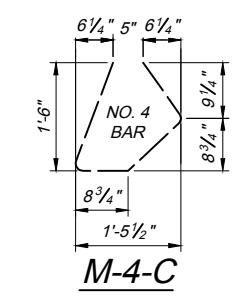
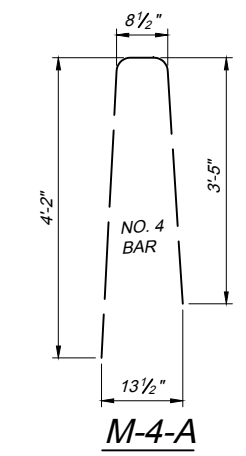
SECTION B-B



ELEVATION C-C



CASTING DETAILS



BAR BENDING DIAGRAM

STEEL LIST							
M-4-A		M-5-B		M-4-C		S6 X 12.5	
NO.	FOOT	NO.	FOOT	NO.	FOOT	NO.	FOOT
10	8'-2"	19	19'-8"	10	4'-4"	2	11'-0"

* AFTER CASTING IS PLACED, FILL NOTCH WITH CLASS QC-1 CONCRETE

- NOTES:**
1. WALLS: THE WALLS BETWEEN THE BOTTOM SLAB AND THE UPPER PERMISSIBLE CONSTRUCTION JOINT MAY BE BUILT OF CAST-IN-PLACE CONCRETE OR PRECAST. CAST-IN-PLACE CONCRETE SHALL HAVE A WALL THICKNESS OF 8" NOMINAL FOR DEPTHS OF 12' OR LESS. PRECAST WALLS SHALL HAVE A MINIMUM THICKNESS OF 6" AND BE REINFORCED SUFFICIENTLY TO PERMIT SHIPPING AND HANDLING WITHOUT DAMAGE. THE UNIT ABOVE THE UPPER PERMISSIBLE CONSTRUCTION JOINT MAY BE PRECAST OR CAST-IN-PLACE.
 2. CONCRETE: CAST-IN-PLACE, TO BE CLASS QC-1. ALL PRECAST CONCRETE SHALL MEET THE REQUIREMENTS OF 706.13 WITH 6 ± 2% AIR VOID CONTENT IN THE HARDENED CONCRETE. REQUIRED MARKINGS SHALL INCLUDE THE INLET NUMBER. PRECAST UNITS SHALL BE BACKFILLED WITH LOW STRENGTH MORTAR, TYPE 2 AS PER SP 611 AND ITEM 613.
 3. STEPS AND CASTING: STEPS SHALL BE IN ACCORDANCE WITH ODOT STANDARD DRAWING MH-1.1. CASTING: MINIMUM WEIGHT OF FRAME AND COVER SHALL BE 540 POUNDS.
 4. OPENINGS: PIPE OPENINGS SHALL BE O.D. PLUS 2" WHEN PREFABRICATED OR CORED. FILL ANY VOIDS PER SP 611.
 5. INLETS OVER 12 FEET IN DEPTH: SUCH INLETS SHALL BE PRECAST OF CAST-IN-PLACE CONCRETE; REINFORCED WITH EPOXY COATED #4 BARS ON 12" CENTERS BOTH VERTICALLY AND HORIZONTALLY WITH 2" CLEARANCE FROM THE INSIDE WALL FACE.
 6. THE FOLLOWING TEXT SHALL BE CAST INTO THE TOP OF THE GRATE: "DUMP NO WASTE" AND "DRAIN TO WATERWAY" TEXT SHALL BE PRINTED IN BOLD, CAPITAL LETTERS WITH A MINIMUM HEIGHT OF 1/2". "WATERWAY" MAY BE SUBSTITUTED WITH "STREAM", "RIVER", "LAKE", ETC. ACTUAL PLACEMENT AND LOGO MAY VARY PER MANUFACTURER.
 7. CONCRETE BARRIER: FOR DETAILS AND NOTES FOR CONCRETE BARRIER, TYPE C-50, AS PER PLAN, SEE OTIC STANDARD DRAWING CBR-1. REINFORCING SHALL BE EPOXY COATED IN ACCORDANCE WITH 509.10.
 8. PAYMENT: PAYMENT WILL BE MADE AT THE UNIT PRICE BID PER EACH FOR SP 611 - INLET, NO. I-3C50, DOUBLE GRATE AND SHALL INCLUDE ALL MATERIALS, REINFORCING STEEL AND CASTINGS AND LABOR REQUIRED TO CONSTRUCT THE CATCH BASIN AS SHOWN, COMPLETE AND ACCEPTED.