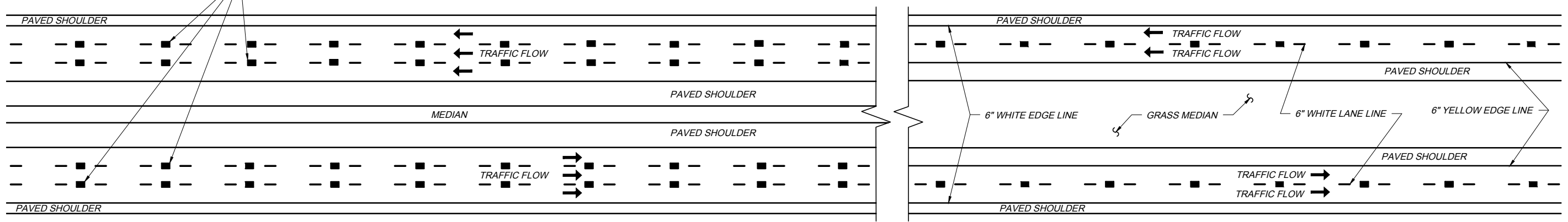


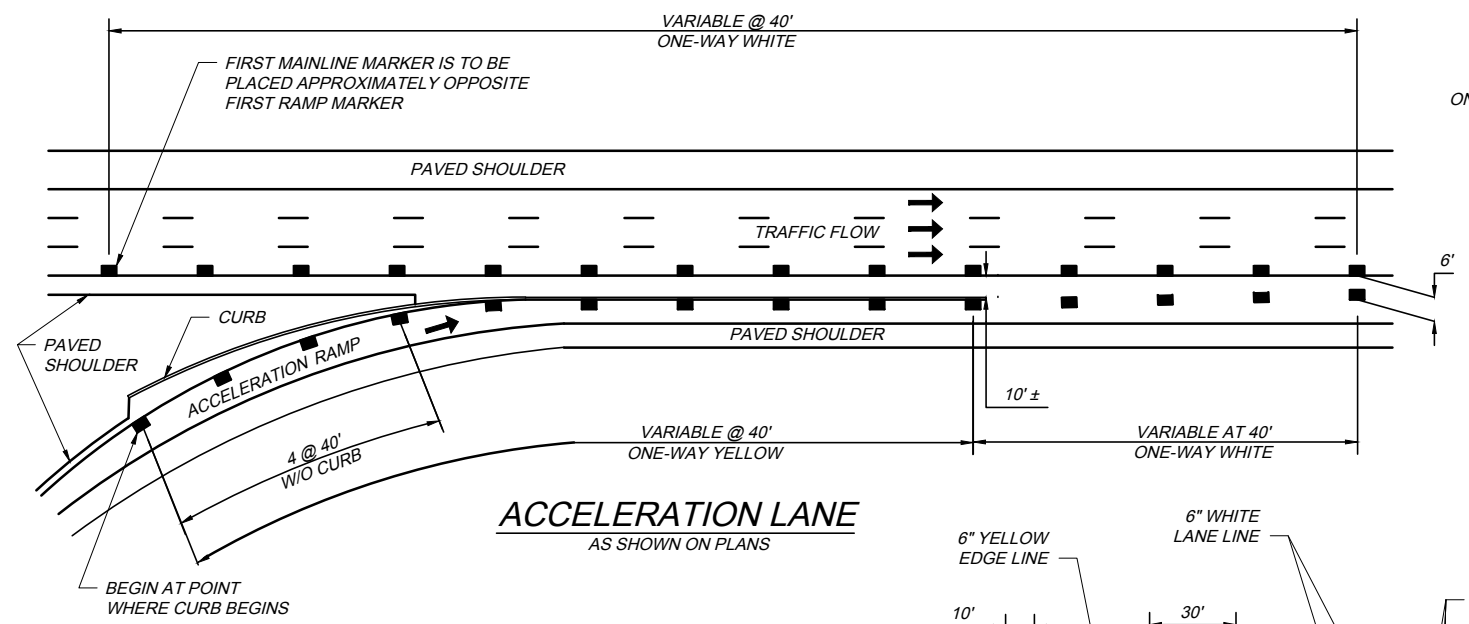
LANE LINE SPACING FOR ONE-WAY WHITE RAISED PAVEMENT MARKERS AT 80' C/C. SEE BELOW FOR RPM PLACEMENT RELATIVE TO CENTERLINE AND BASE PAVEMENT OF ROADWAY.



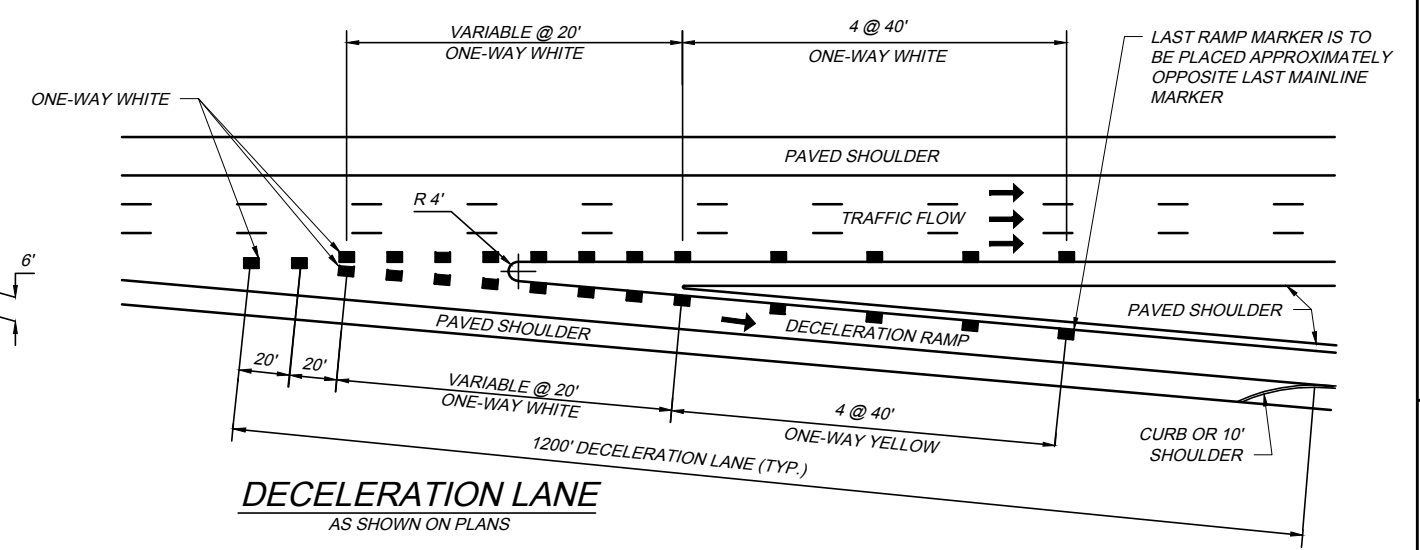
3 LANE PLAN

2 LANE PLAN

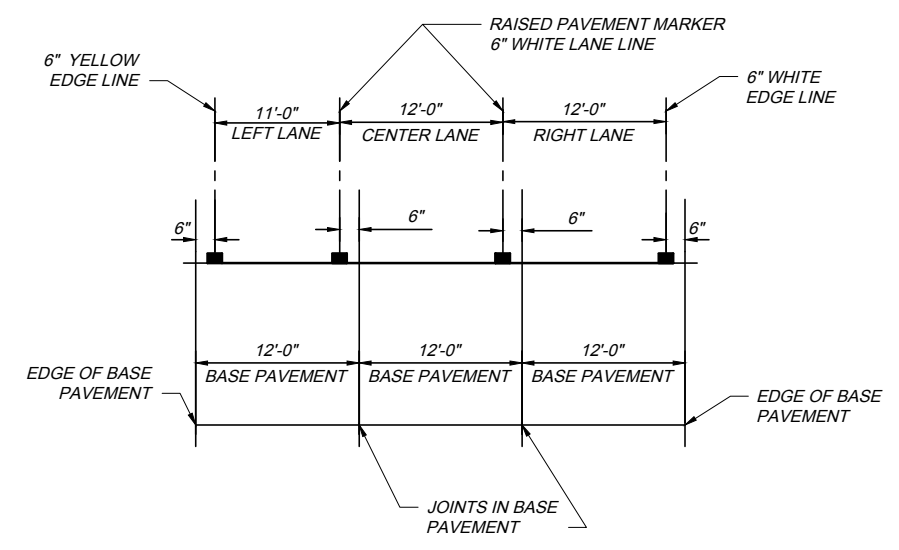
MAINLINE RAISED PAVEMENT MARKER AND LANE LINE LAYOUT



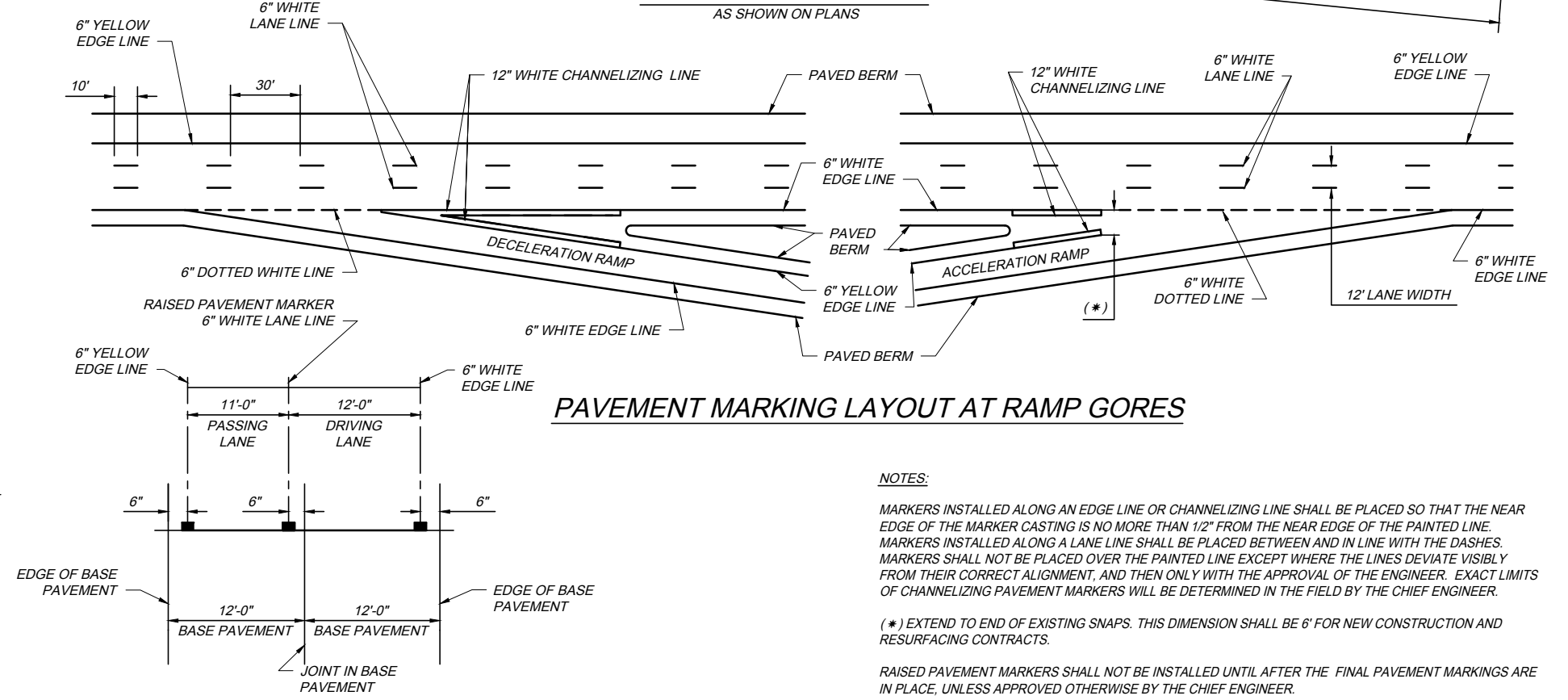
ACCELERATION LANE
AS SHOWN ON PLANS



DECELERATION LANE
AS SHOWN ON PLANS



3 LANE STRIPING AND RPM PLACEMENT



PAVEMENT MARKING LAYOUT AT RAMP GORES

2 LANE STRIPING AND RPM PLACEMENT

NOTES:
 MARKERS INSTALLED ALONG AN EDGE LINE OR CHANNELIZING LINE SHALL BE PLACED SO THAT THE NEAR EDGE OF THE MARKER CASTING IS NO MORE THAN 1/2" FROM THE NEAR EDGE OF THE PAINTED LINE. MARKERS INSTALLED ALONG A LANE LINE SHALL BE PLACED BETWEEN AND IN LINE WITH THE DASHES. MARKERS SHALL NOT BE PLACED OVER THE PAINTED LINE EXCEPT WHERE THE LINES DEVIATE VISIBLY FROM THEIR CORRECT ALIGNMENT, AND THEN ONLY WITH THE APPROVAL OF THE ENGINEER. EXACT LIMITS OF CHANNELIZING PAVEMENT MARKERS WILL BE DETERMINED IN THE FIELD BY THE CHIEF ENGINEER.
 (*) EXTEND TO END OF EXISTING SNAPS. THIS DIMENSION SHALL BE 6' FOR NEW CONSTRUCTION AND RESURFACING CONTRACTS.
 RAISED PAVEMENT MARKERS SHALL NOT BE INSTALLED UNTIL AFTER THE FINAL PAVEMENT MARKINGS ARE IN PLACE, UNLESS APPROVED OTHERWISE BY THE CHIEF ENGINEER.
 SEE SP 621 FOR RAISED PAVEMENT MARKERS SPECIFICATIONS.

RPM-1 2023.02.17.DWG - 2/28/23 - 8:27am

DATE: FEBRUARY 17, 2023

STANDARD DRAWING

RAISED PAVEMENT MARKER AND STRIPING LAYOUT

RPM-1

1 / 1