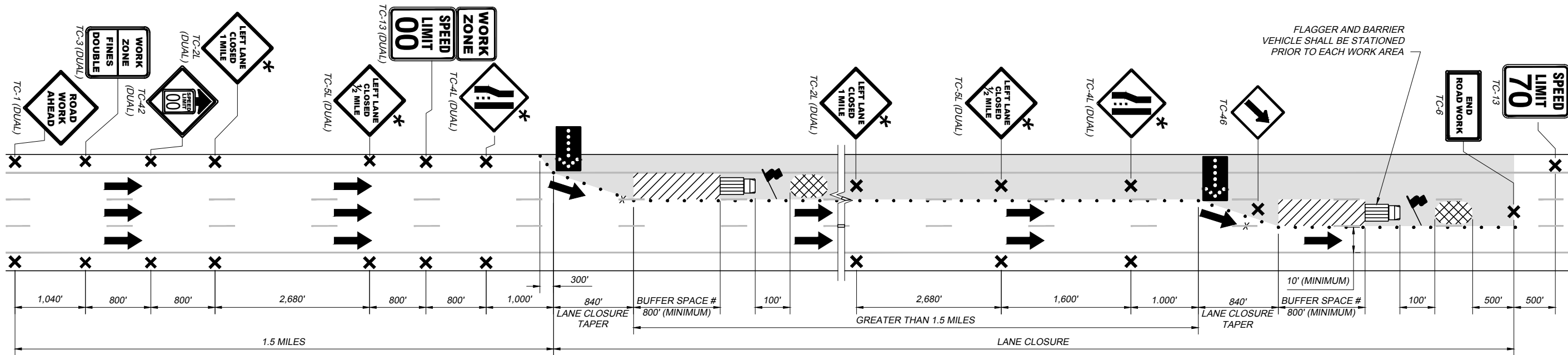


DOUBLE LANE CLOSURE
THREE - LANE ROADWAY



DOUBLE LANE CLOSURE #
THREE - LANE ROADWAY

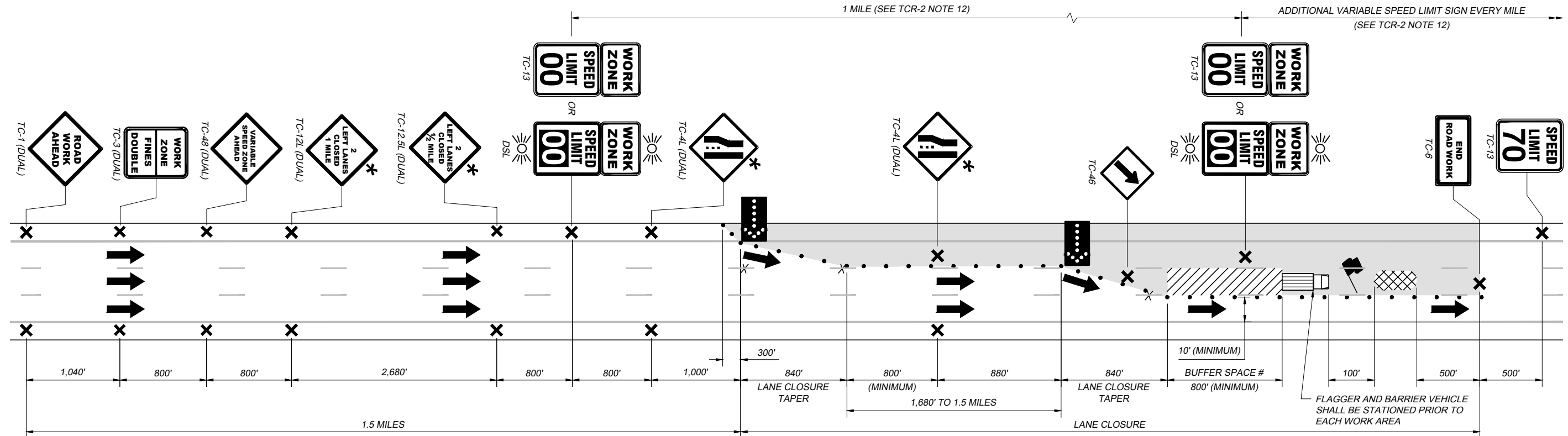
LEGEND

- * - SUBSTITUTE "RIGHT LANE CLOSED" SIGNS (TC-2R, TC-5R, TC-4R, TC-12R, TC-12.5R) FOR "LEFT LANE CLOSED" SIGNS (SHOWN) WHEN RIGHT LANE IS CLOSED.
- # - THE BUFFER SPACE SHALL BE KEPT FREE OF WORK ACTIVITIES, EQUIPMENT, VEHICLES AND MATERIALS.
- # - IF THE SECOND LANE CLOSURE IS GREATER THAN 1.5 MILES FROM THE FIRST LANE CLOSURE THEN THE ZONE SHOULD BE SET AS TWO SINGLE LANE CLOSURES INSTEAD OF A DOUBLE LANE CLOSURE.

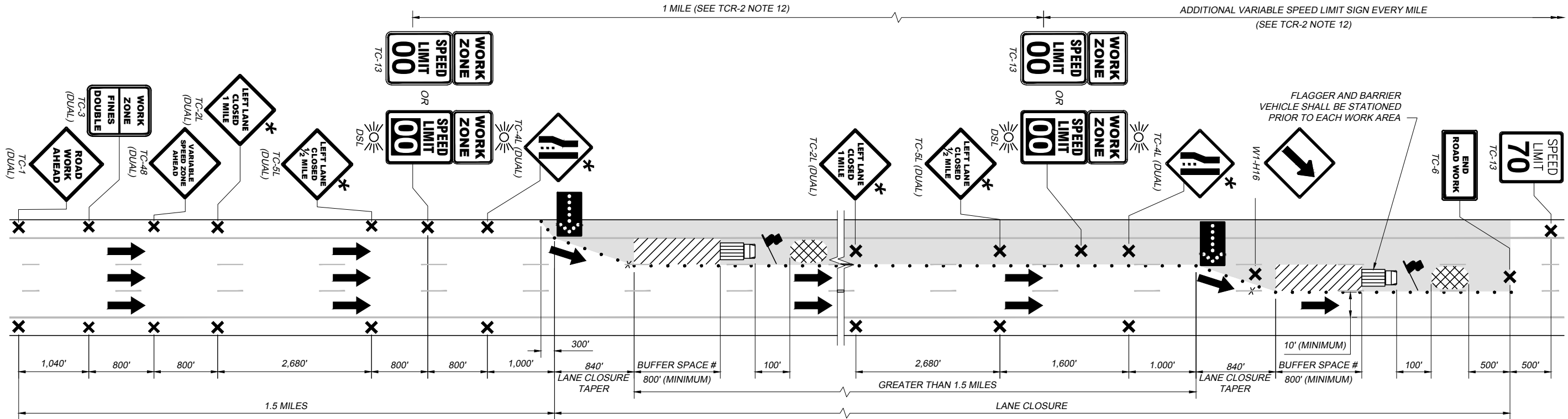
NOTES:

- SEE OTIC STANDARD DRAWING TCR-1 FOR ADDITIONAL NOTES AND DEFINITIONS, INCLUDING GUIDANCE FOR ESTABLISHING WORK ZONE SPEED LIMITS AND THE USE OF VARIABLE SPEED ZONES.
- SEE OTIC STANDARD DRAWING TCR-2 FOR ADDITIONAL NOTES, DETAILS AND LEGEND.
- IN SECTIONS WHERE THE RIGHT LANE IS THE ONLY LANE OPEN TO TRAFFIC, ALL EMERGENCY PARKING AREAS (EPA) LOCATED WITHIN THE LANE CLOSURE SHALL BE CLOSED, AS FOLLOWS.
 - USE 42-INCH CONES OR DRUMS AT TWENTY (20) FOOT ON-CENTER SPACING TO EXTEND THE EDGE OF SHOULDER LONGITUDINALLY THROUGH THE EPA.
 - COVER ALL SIGNS RELATED TO THE EPA (E.G. "EMERGENCY PARKING ONLY" / "2 HOUR LIMIT", "NO PARKING EXCEPT FOR EMERGENCY", "EMERGENCY PARKING 1/2 MILE", ETC.)

TCR-10 2025.06.10.dwg: 6/17/25



DOUBLE LANE CLOSURE WITH VARIABLE SPEED ZONES
THREE - LANE ROADWAY



DOUBLE LANE CLOSURE WITH VARIABLE SPEED ZONES ≠
THREE - LANE ROADWAY

LEGEND

- * - SUBSTITUTE "RIGHT LANE CLOSED" SIGNS (TC-2R, TC-5R, TC-4R, TC-12R, TC-12.5R) FOR "LEFT LANE CLOSED" SIGNS (SHOWN) WHEN RIGHT LANE IS CLOSED.
- # - THE BUFFER SPACE SHALL BE KEPT FREE OF WORK ACTIVITIES, EQUIPMENT, VEHICLES AND MATERIALS.
- ≠ - IF THE SECOND LANE CLOSURE IS GREATER THAN 1.5 MILES FROM THE FIRST LANE CLOSURE THEN THE ZONE SHOULD BE SET AS TWO SINGLE LANE CLOSURES INSTEAD OF A DOUBLE LANE CLOSURE.

NOTES:

- SEE OTIC STANDARD DRAWING TCR-1 FOR ADDITIONAL NOTES AND DEFINITIONS, INCLUDING GUIDANCE FOR ESTABLISHING WORK ZONE SPEED LIMITS AND THE USE OF VARIABLE SPEED ZONES.
- SEE OTIC STANDARD DRAWING TCR-2 FOR ADDITIONAL NOTES, DETAILS AND LEGEND.
- IN SECTIONS WHERE THE RIGHT LANE IS THE ONLY LANE OPEN TO TRAFFIC, ALL EMERGENCY PARKING AREAS (EPA) LOCATED WITHIN THE LANE CLOSURE SHALL BE CLOSED, AS FOLLOWS.
 - USE 42-INCH CONES OR DRUMS AT TWENTY (20) FOOT ON-CENTER SPACING TO EXTEND THE EDGE OF SHOULDER LONGITUDINALLY THROUGH THE EPA.
 - COVER ALL SIGNS RELATED TO THE EPA (E.G. "EMERGENCY PARKING ONLY" / "2 HOUR LIMIT", "NO PARKING EXCEPT FOR EMERGENCY", "EMERGENCY PARKING 1/2 MILE", ETC.)

TEMPORARY TRAFFIC CONTROL
DOUBLE LANE CLOSURE

TCR-10

2 / 2

STANDARD DRAWING

DATE: JUNE 10, 2025