

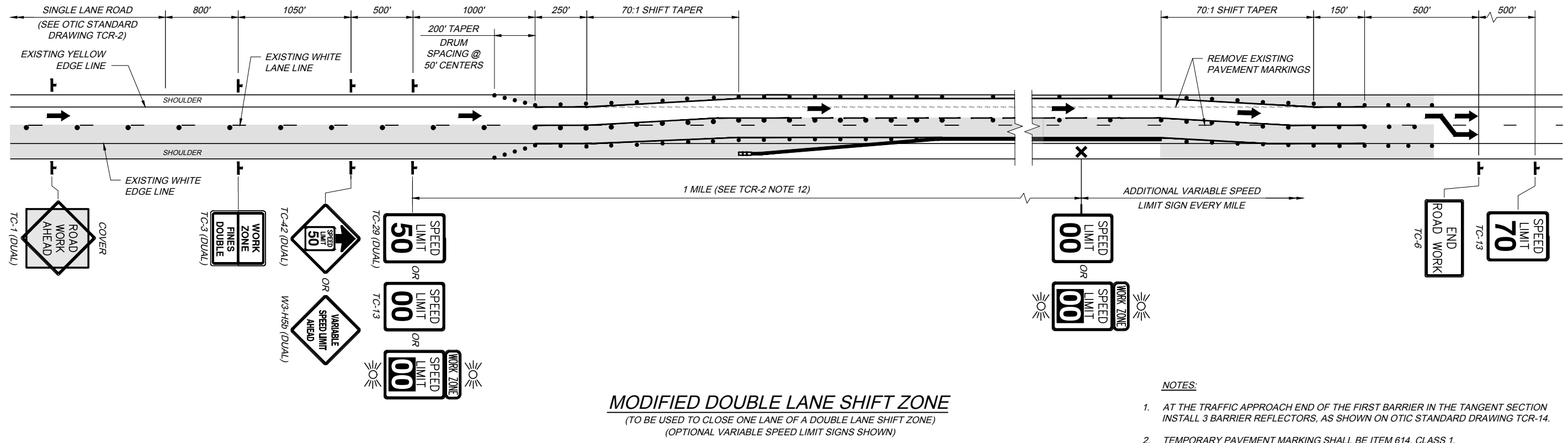
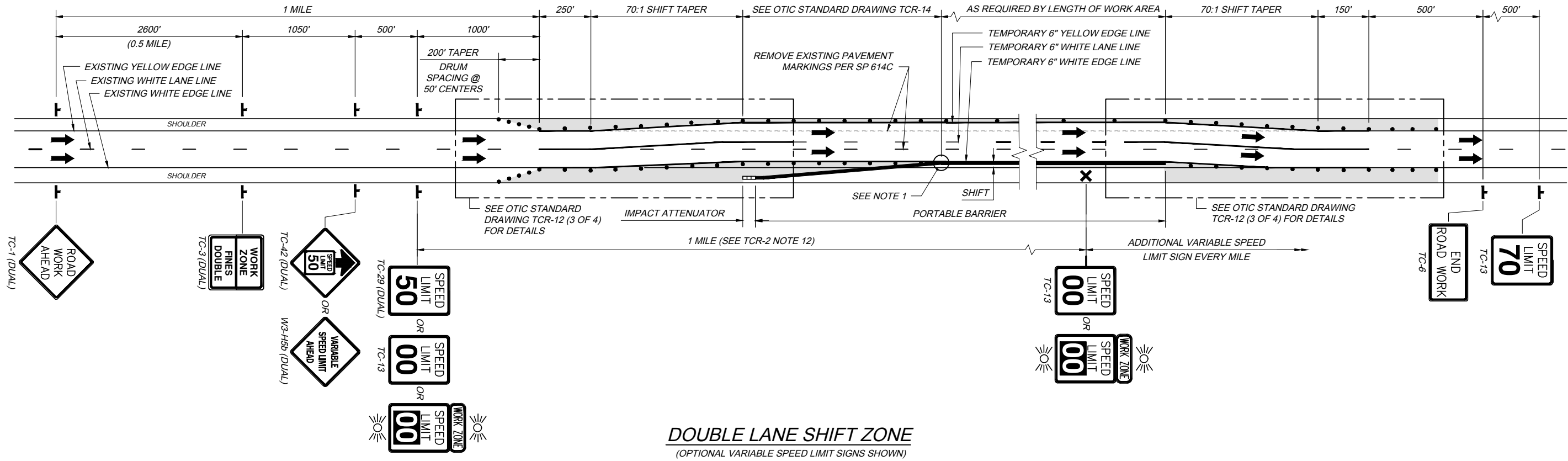
DATE: FEBRUARY 17, 2023

STANDARD DRAWING

TEMPORARY TRAFFIC CONTROL
SINGLE AND DOUBLE LANE SHIFT ZONES

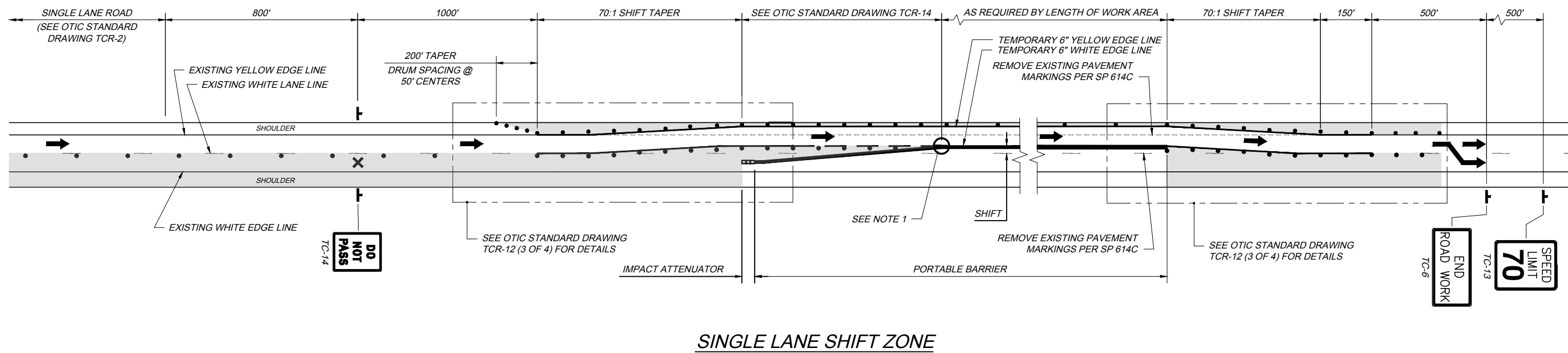
TCR-12

1 / 4



- NOTES:**
1. AT THE TRAFFIC APPROACH END OF THE FIRST BARRIER IN THE TANGENT SECTION INSTALL 3 BARRIER REFLECTORS, AS SHOWN ON OTIC STANDARD DRAWING TCR-14.
 2. TEMPORARY PAVEMENT MARKING SHALL BE ITEM 614, CLASS 1.
 3. FOR ADDITIONAL LEGEND, NOTES AND DETAILS, SEE OTIC STANDARD DRAWING TCR-1.
 4. FOR DEFINITIONS SEE OTIC STANDARD DRAWING TCR-1.
 5. VARIABLE SPEED LIMITS SHALL BE APPLIED AS SHOWN IN THE PLANS OR WHERE APPROVED BY THE CHIEF ENGINEER.

TCR-12 2023.02.17.DWG; 2/27/23

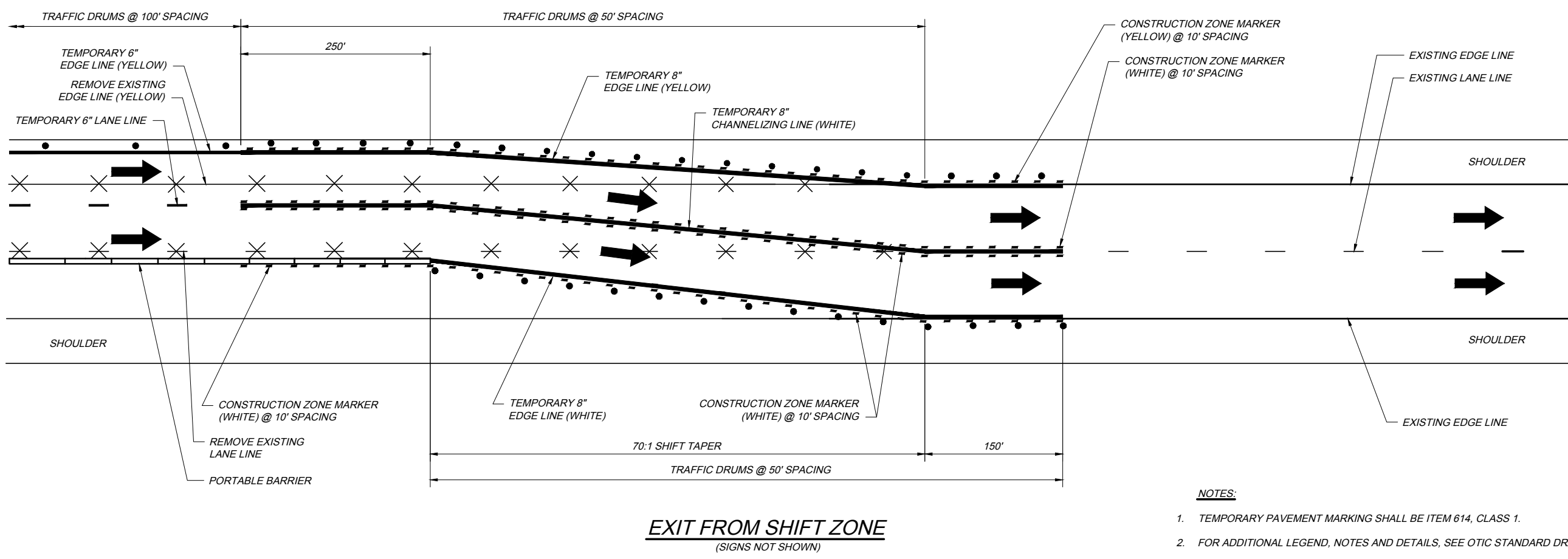
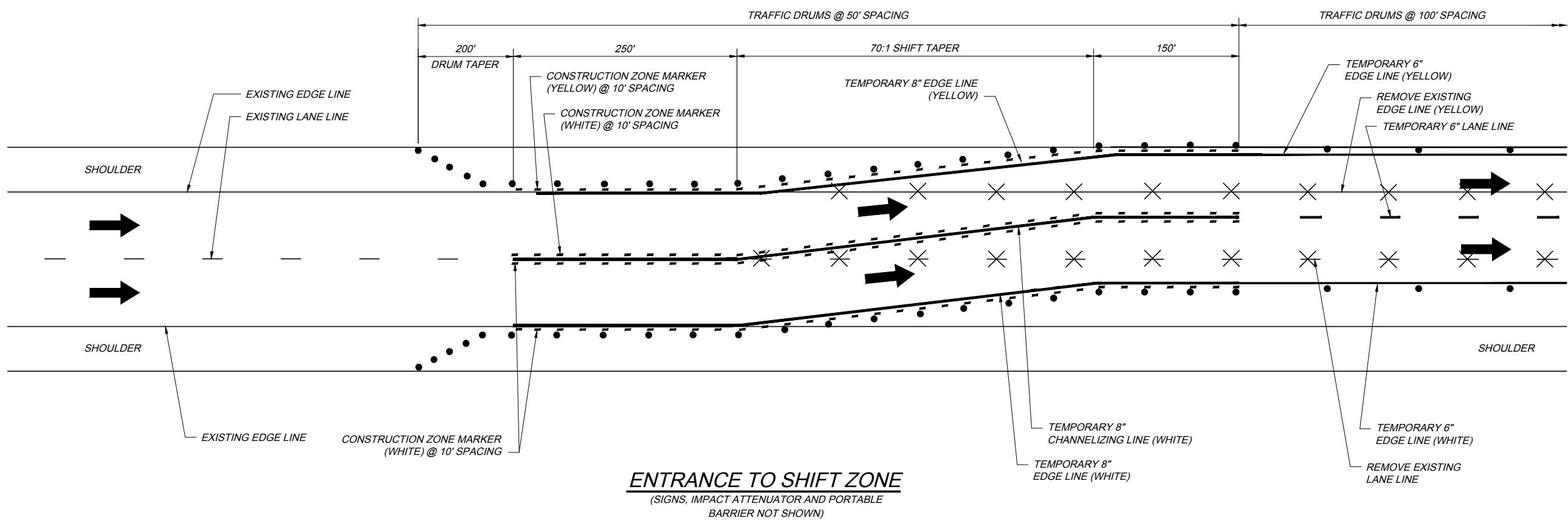


NOTES:

1. AT THE TRAFFIC APPROACH END OF THE FIRST BARRIER IN THE TANGENT SECTION INSTALL 3 BARRIER REFLECTORS, AS SHOWN ON OTIC STANDARD DRAWING TCR-14.
2. TEMPORARY PAVEMENT MARKING SHALL BE ITEM 614, CLASS 1.
3. FOR ADDITIONAL LEGEND, NOTES AND DETAILS, SEE OTIC STANDARD DRAWING TCR-2.
4. FOR DEFINITIONS SEE OTIC STANDARD DRAWING TCR-1.
5. VARIABLE SPEED LIMITS SHALL BE APPLIED AS SHOWN IN THE PLANS OR WHERE APPROVED BY THE CHIEF ENGINEER.

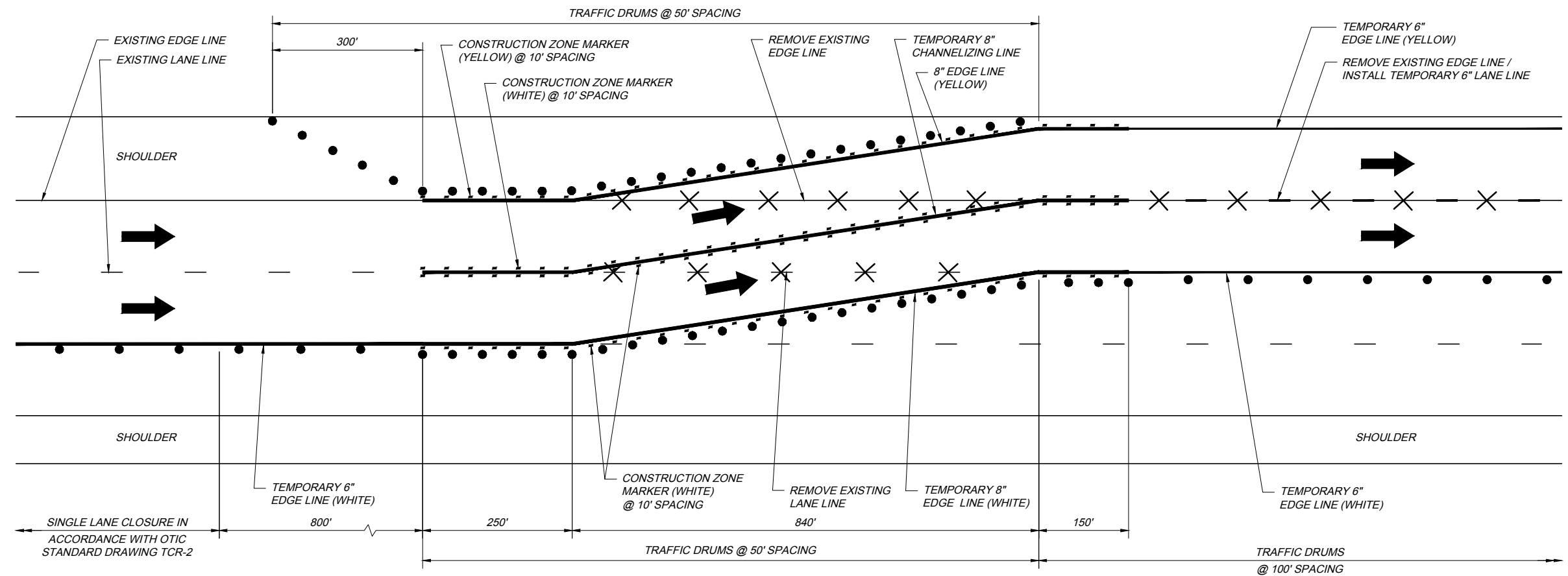
TCR-12	TEMPORARY TRAFFIC CONTROL SINGLE AND DOUBLE LANE SHIFT ZONES	STANDARD DRAWING	DATE: FEBRUARY 17, 2023
2 / 4	OHIO TURNPIKE AND INFRASTRUCTURE COMMISSION		



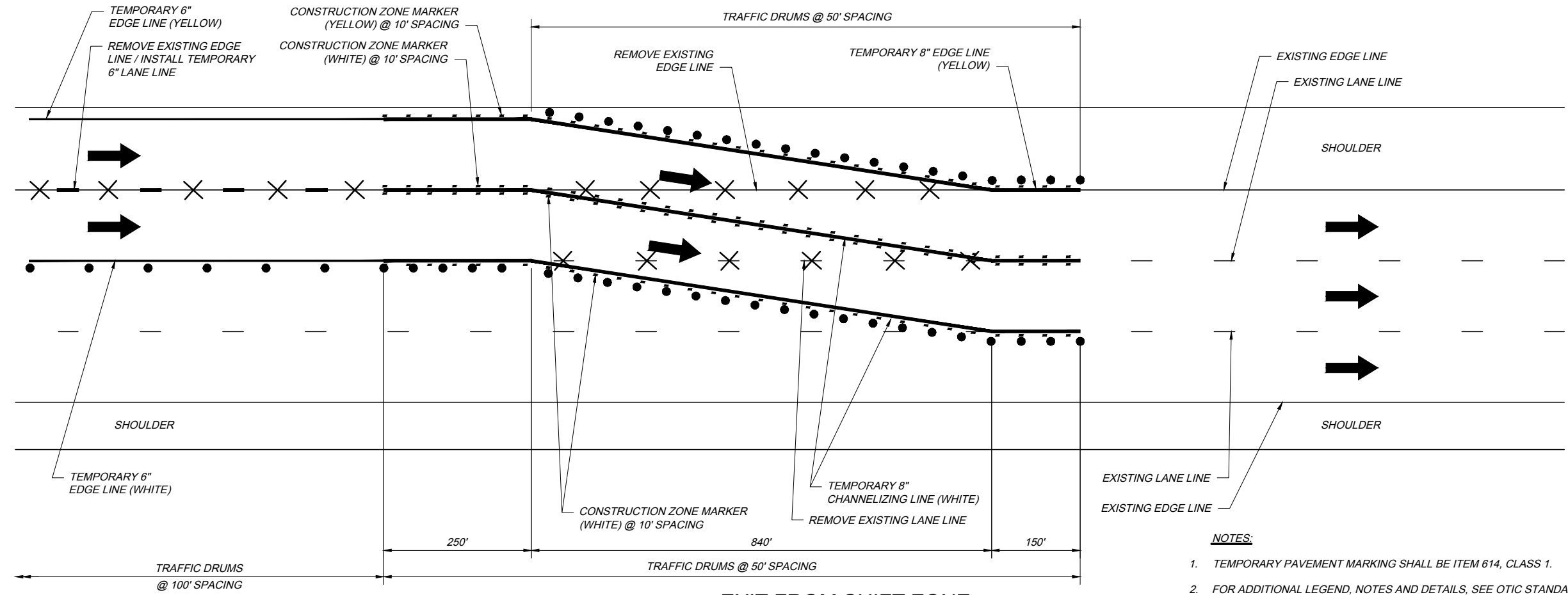


- NOTES:**
1. TEMPORARY PAVEMENT MARKING SHALL BE ITEM 614, CLASS 1.
 2. FOR ADDITIONAL LEGEND, NOTES AND DETAILS, SEE OTIC STANDARD DRAWING TCR-2.
 3. FOR DEFINITIONS SEE OTIC STANDARD DRAWING TCR-1.

TCR-12 2023.02.17.DWG; 2/27/23



ENTRANCE TO SHIFT ZONE
(SIGNS NOT SHOWN)



EXIT FROM SHIFT ZONE
(SIGNS NOT SHOWN)

- NOTES:**
- TEMPORARY PAVEMENT MARKING SHALL BE ITEM 614, CLASS 1.
 - FOR ADDITIONAL LEGEND, NOTES AND DETAILS, SEE OTIC STANDARD DRAWING TCR-2.
 - FOR DEFINITIONS SEE OTIC STANDARD DRAWING TCR-1.

TCR-12 2023.02.17.DWG; 2/28/23