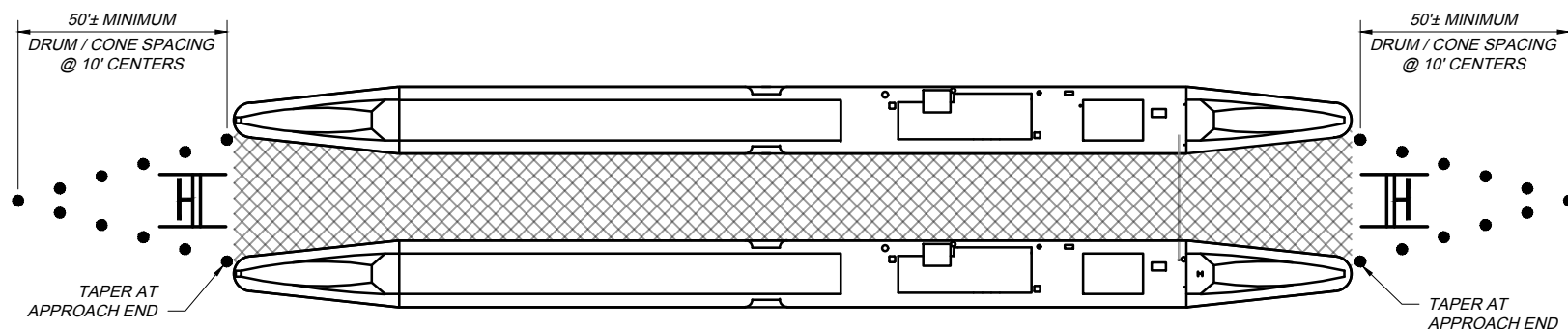
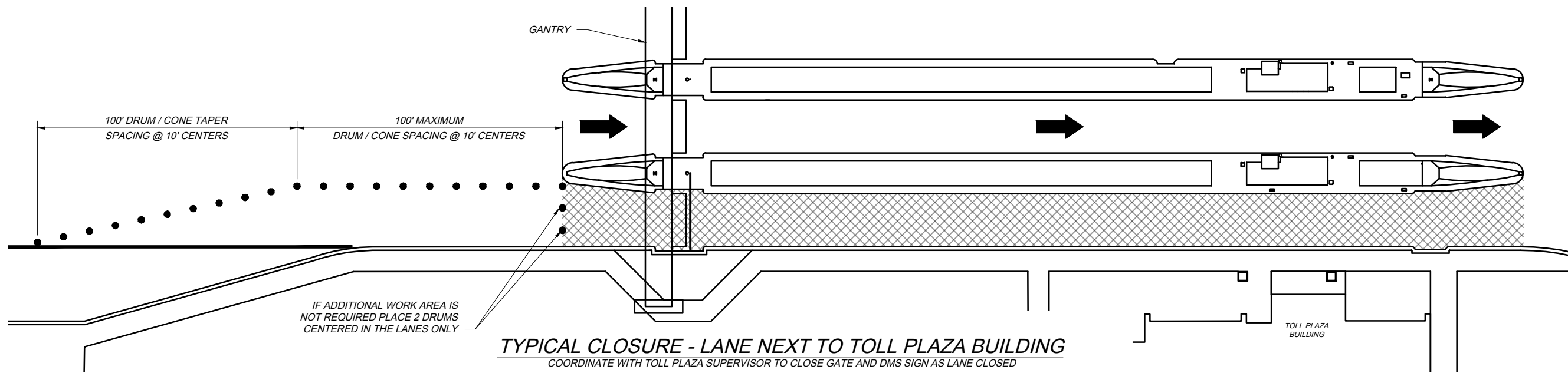


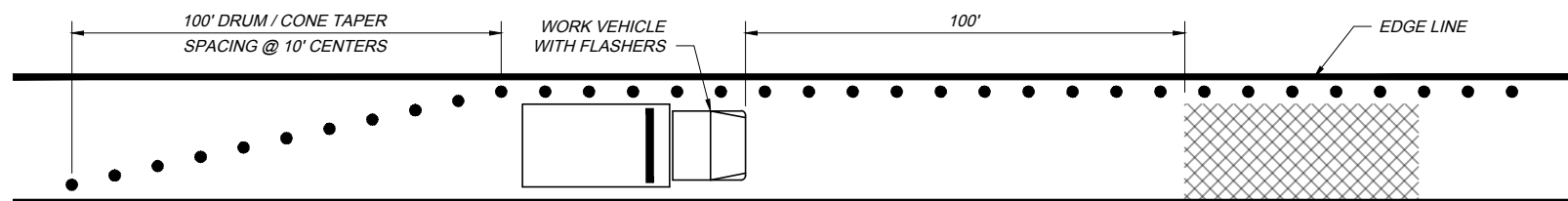
TYPICAL CLOSURE - LANE FURTHEST FROM TOLL PLAZA BUILDING
 COORDINATE WITH TOLL PLAZA SUPERVISOR TO CLOSE GATE AND DMS SIGN AS LANE CLOSED



TYPICAL CLOSURE - INTERIOR LANE
 COORDINATE WITH TOLL PLAZA SUPERVISOR TO CLOSE GATE AND DMS SIGN AS LANE CLOSED



TYPICAL CLOSURE - LANE NEXT TO TOLL PLAZA BUILDING
 COORDINATE WITH TOLL PLAZA SUPERVISOR TO CLOSE GATE AND DMS SIGN AS LANE CLOSED



TYPICAL SHOULDER CLOSURE - NEAR TOLL PLAZA
 COORDINATE WITH TOLL PLAZA SUPERVISOR

LEGEND

- WORK AREA
- CONE / DRUM
- LANE DIRECTION ARROW
- TYPE III BARRICADE

- NOTES:**
1. ALL EXISTING PAVEMENT MARKINGS SHALL REMAIN.
 2. PLACE ROAD WORK AHEAD (W20-1 36" X 36") SIGNS ON ALL APPROACH RAMP.
 3. KEEP THE EXISTING CROSSINGS AND TURNAROUNDS ON BOTH SIDES OF THE PLAZA FUNCTIONAL FOR OVERWEIGHT AND OVERSIZED TRUCKS.
 4. DO NOT BLOCK TOLL PLAZA PARKING AREA ACCESS.
 5. KEEP THE TOLL BOOTH CROSSINGS CLEAR FOR ALL OPEN BOOTHS AND SHALL PROVIDE A SAFE PATH WITHIN THE CLOSED LANES.

TCR-6 2023.02.17.dwg, 2/27/23 - 11:00am

DATE: FEBRUARY 17, 2023

STANDARD DRAWING

TEMPORARY TRAFFIC CONTROL
 TOLL PLAZA LANE CLOSURES

TCR-6

1 / 1



OHIO TURNPIKE AND INFRASTRUCTURE COMMISSION

