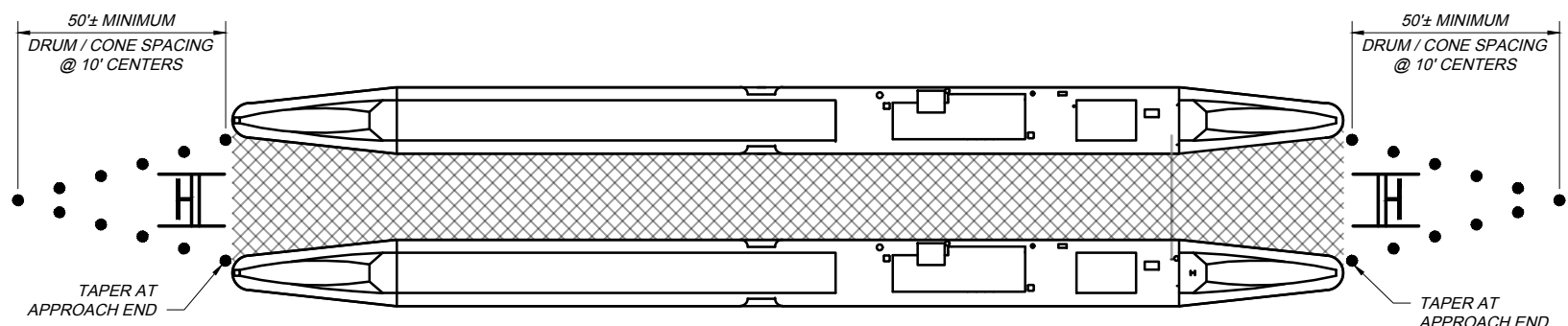
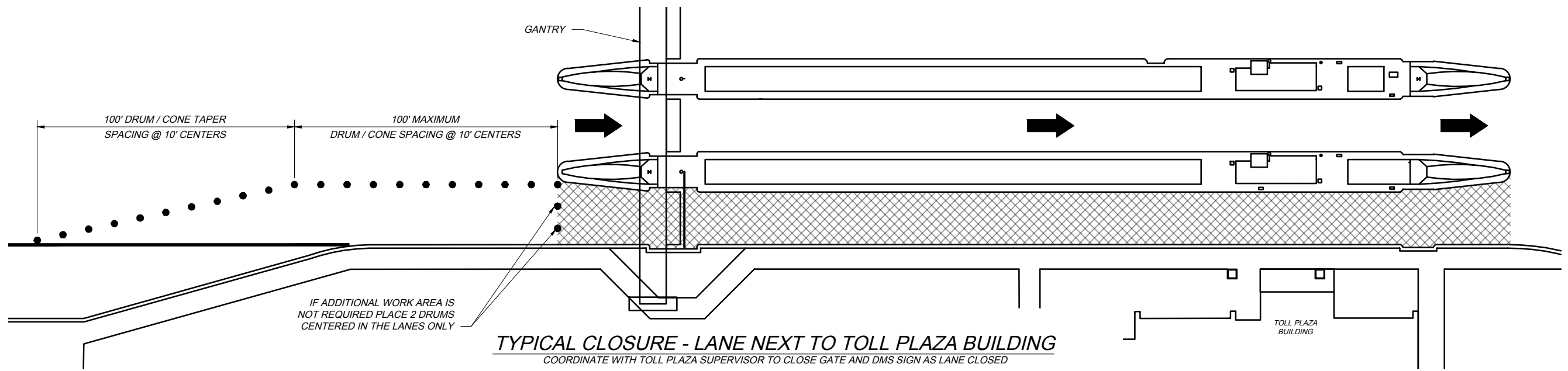


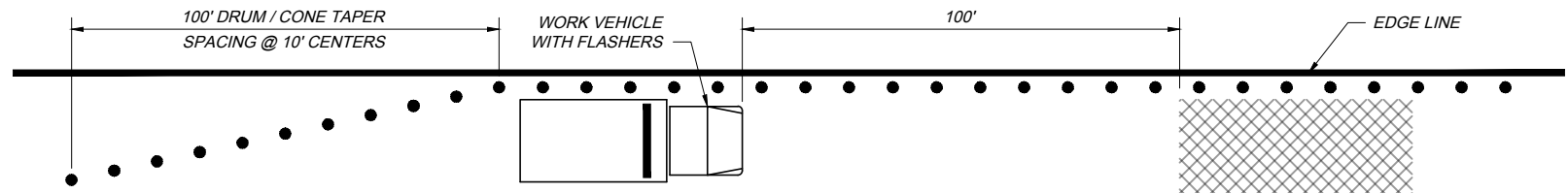
TYPICAL CLOSURE - LANE FURTHEST FROM TOLL PLAZA BUILDING
 COORDINATE WITH TOLL PLAZA SUPERVISOR TO CLOSE GATE AND DMS SIGN AS LANE CLOSED



TYPICAL CLOSURE - INTERIOR LANE
 COORDINATE WITH TOLL PLAZA SUPERVISOR TO CLOSE GATE AND DMS SIGN AS LANE CLOSED



TYPICAL CLOSURE - LANE NEXT TO TOLL PLAZA BUILDING
 COORDINATE WITH TOLL PLAZA SUPERVISOR TO CLOSE GATE AND DMS SIGN AS LANE CLOSED



TYPICAL SHOULDER CLOSURE - NEAR TOLL PLAZA
 COORDINATE WITH TOLL PLAZA SUPERVISOR

- NOTES:**
- SEE OTIC STANDARD DRAWING TCR-1 FOR ADDITIONAL NOTES AND DEFINITIONS.
 - SEE OTIC STANDARD DRAWING TCR-2 FOR ADDITIONAL NOTES, DETAILS AND LEGEND.
 - ALL EXISTING PAVEMENT MARKINGS SHALL REMAIN.
 - PLACE ROAD WORK AHEAD (TC-1) SIGNS ON ALL APPROACH RAMP.
 - KEEP THE EXISTING CROSSINGS AND TURNAROUNDS ON BOTH SIDES OF THE PLAZA FUNCTIONAL FOR OVERWEIGHT AND OVERSIZED TRUCKS.
 - DO NOT BLOCK TOLL PLAZA PARKING AREA ACCESS.
 - KEEP THE TOLL BOOTH CROSSINGS CLEAR FOR ALL OPEN BOOTHS AND SHALL PROVIDE A SAFE PATH WITHIN THE CLOSED LANES.

TCR-6 2025.06.10.dwg: 6/16/25 - 3:21pm

DATE: JUNE 10, 2025

STANDARD DRAWING

TEMPORARY TRAFFIC CONTROL
 TOLL PLAZA LANE CLOSURES

TCR-6

1 / 1