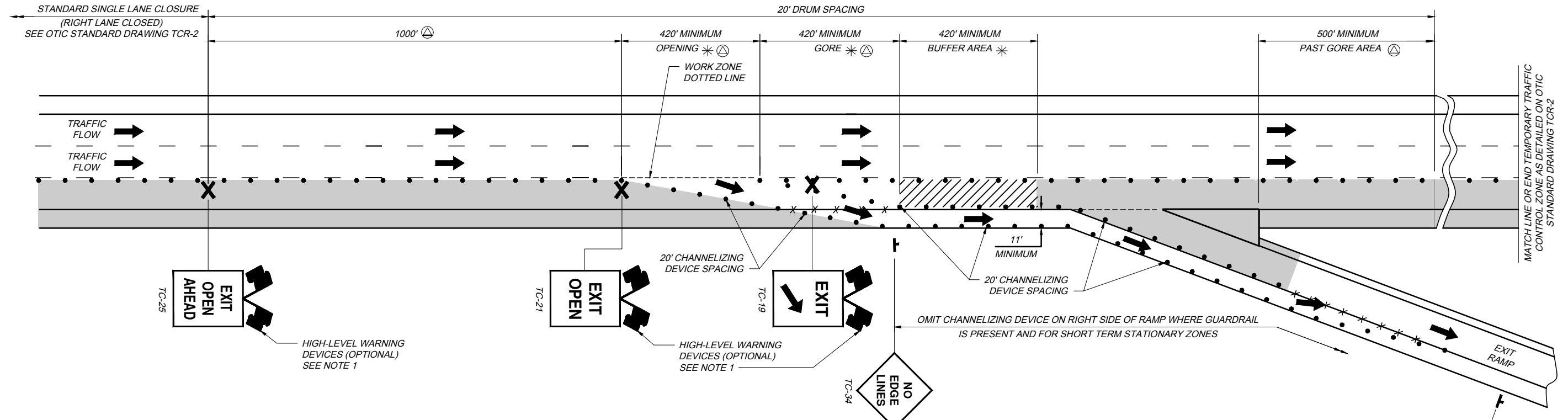
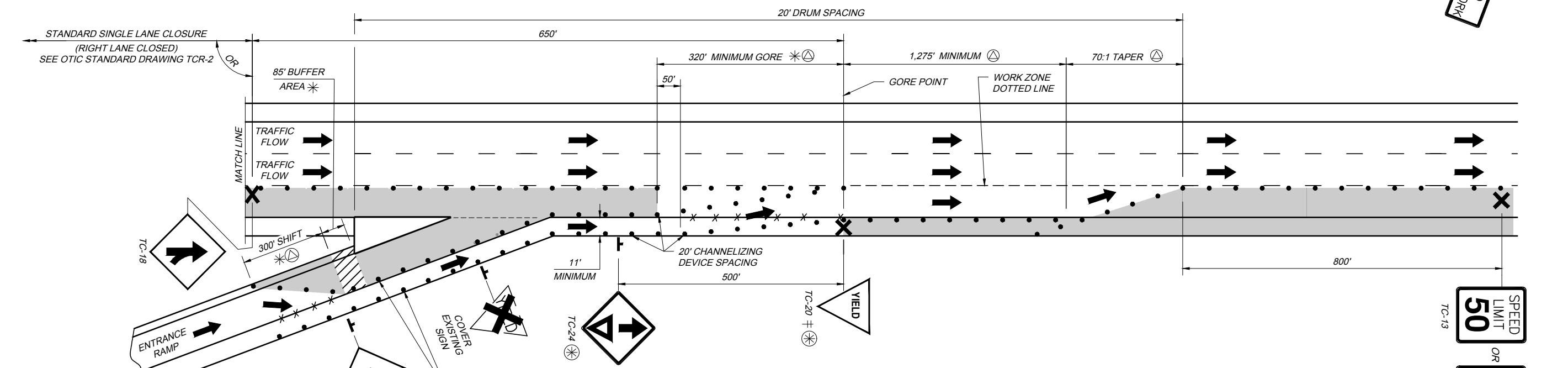


TCR-9.2 2023.02.17.dwg: 2/28/23 - 9:00am



LANE CLOSURE AT EXIT RAMP
STANDARD LANE CLOSURE OR RIGHT LANE CLOSED
(SEE OTIC STANDARD DRAWING TCR-2)



LANE CLOSURE AT ENTRANCE RAMP
STANDARD LANE CLOSURE OR RIGHT LANE CLOSED
(SEE OTIC STANDARD DRAWING TCR-2)

LEGEND

- * THE EXIT RAMP GORE, BUFFER SPACES AND TAPER AREAS SHALL BE KEPT FREE FROM WORK ACTIVITIES, EQUIPMENT, VEHICLES AND MATERIALS.
- ⊕ CHANNELIZING DEVICES SHALL BE SPACED AT 20 FEET FOR INDICATED TAPERS.
- ⊗ MAY BE OMITTED FOR SHORT TERM STATIONARY ZONE.
- ⊕ TEMPORARY YIELD SIGN SHALL BE PLACED DIRECTLY ACROSS FROM THE ACCELERATION RAMP GORE POINT.
- X X X REMOVE LANE LINE, DOTTED LINES, AND RPM REFLECTORS (OMIT FOR SHORT AND INTERMEDIATE TERM STATIONARY ZONES).

NOTES:

1. A HIGH-LEVEL WARNING DEVICE SHALL CONSIST OF TWO FLAGS AT 45 DEGREES TO THE VERTICAL. THE DISTANCE FROM THE ROADWAY TO THE LOWEST POINT OF THE FLAG MATERIAL SHALL BE NOT LESS THAN 8 FEET. THE FLAGS SHALL BE 16 INCHES SQUARE OR LARGER AND SHALL BE ORANGE OR FLUORESCENT RED-ORANGE IN COLOR.
2. SEE OTIC STANDARD DRAWING TCR-1 FOR DEFINITIONS.
3. FOR ADDITIONAL LEGEND, NOTES AND DETAILS, SEE OTIC STANDARD DRAWING TCR-2.
4. TC-1, TC-7R, TC-24, AND TC-34 SIGNS MAY BE MOUNTED ON X-FOOT PRINT SIGN STANDS FOR SHORT TERM STATIONARY ZONES.

