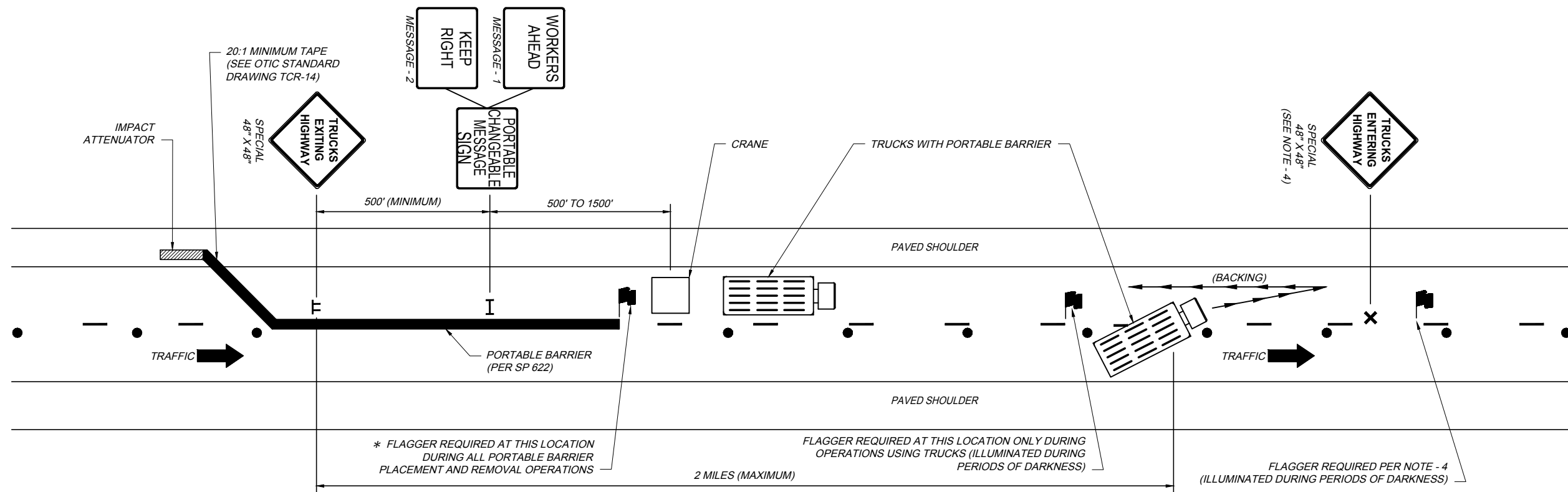
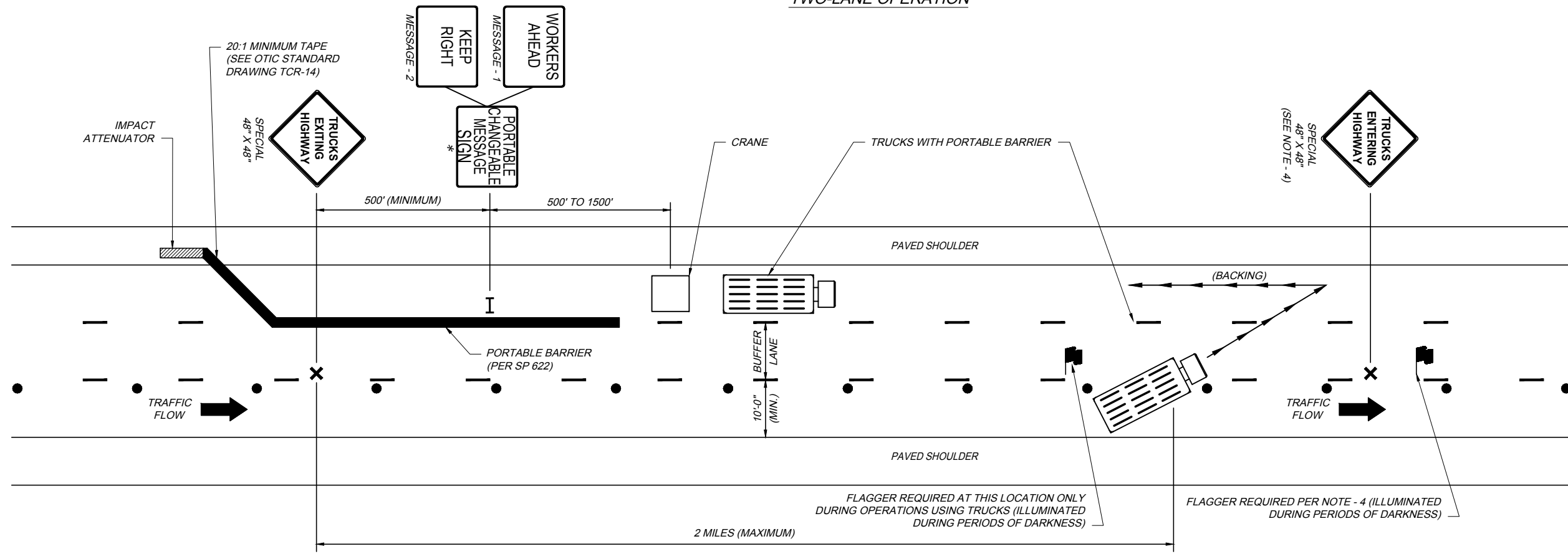


TCB-1 2017.10.20.DWG. 10/25/17 - 4:41pm



TWO-LANE OPERATION



THREE-LANE OPERATION (WITH BUFFER LANE)

NOTES:

1. FOR NIGHTTIME OPERATIONS ALL LIGHTS SHALL BE DIRECTED AT SUCH AN ANGLE SO AS NOT TO HINDER THE VISION OF ONCOMING TRAFFIC, YET SUFFICIENT TO LIGHT THE CONSTRUCTION AREA.
 2. ORDER OF OPERATIONS.
 - A. SET IMPACT ATTENUATOR FIRST.
 - B. SET BARRIER WITH DIRECTION OF TRAFFIC FLOW.
 - C. REMOVE BARRIER AGAINST DIRECTION OF TRAFFIC FLOW.
 - D. REMOVE IMPACT ATTENUATOR.
 3. CONTRACTOR SHALL ADJUST SIGN AND PORTABLE CHANGEABLE MESSAGE SIGN TO MAINTAIN REQUIRED SPACINGS.
 4. IF THE DELIVERY TRUCKS RETURN TO THE OPEN TRAFFIC LANE, A "TRUCKS ENTERING HIGHWAY" SIGN SHALL BE LOCATED 1000 FEET AHEAD OF THE ENTRY LOCATION AND A FLAGGER SHALL BE LOCATED AT THE ENTRY LOCATION. THE FLAGGER AND ADDITIONAL SIGN IS NOT REQUIRED IF THE BARRIER DELIVERY TRUCKS EXIT THE WORK ZONE AT THE END OF THE CLOSED LANE.
 5. FOR LEGENDS, DETAILS AND NOTES, SEE OTIC STANDARD DRAWING TCR-2
- * - THESE ITEMS ARE NOT REQUIRED IF THERE IS NO EQUIPMENT, MATERIALS OR WORKERS IN THE BUFFER LANE.