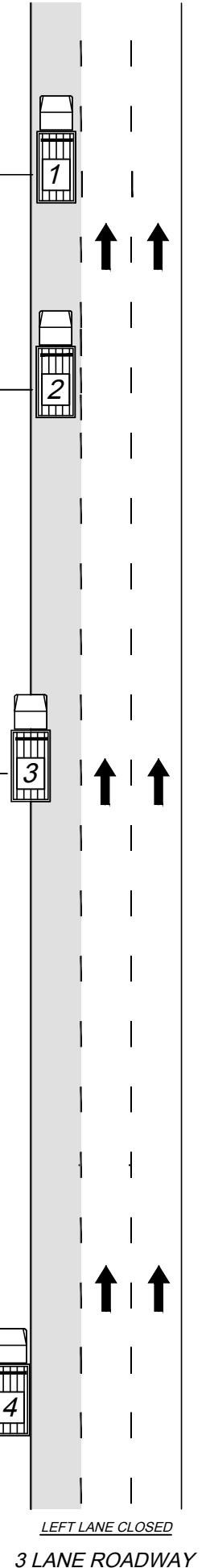
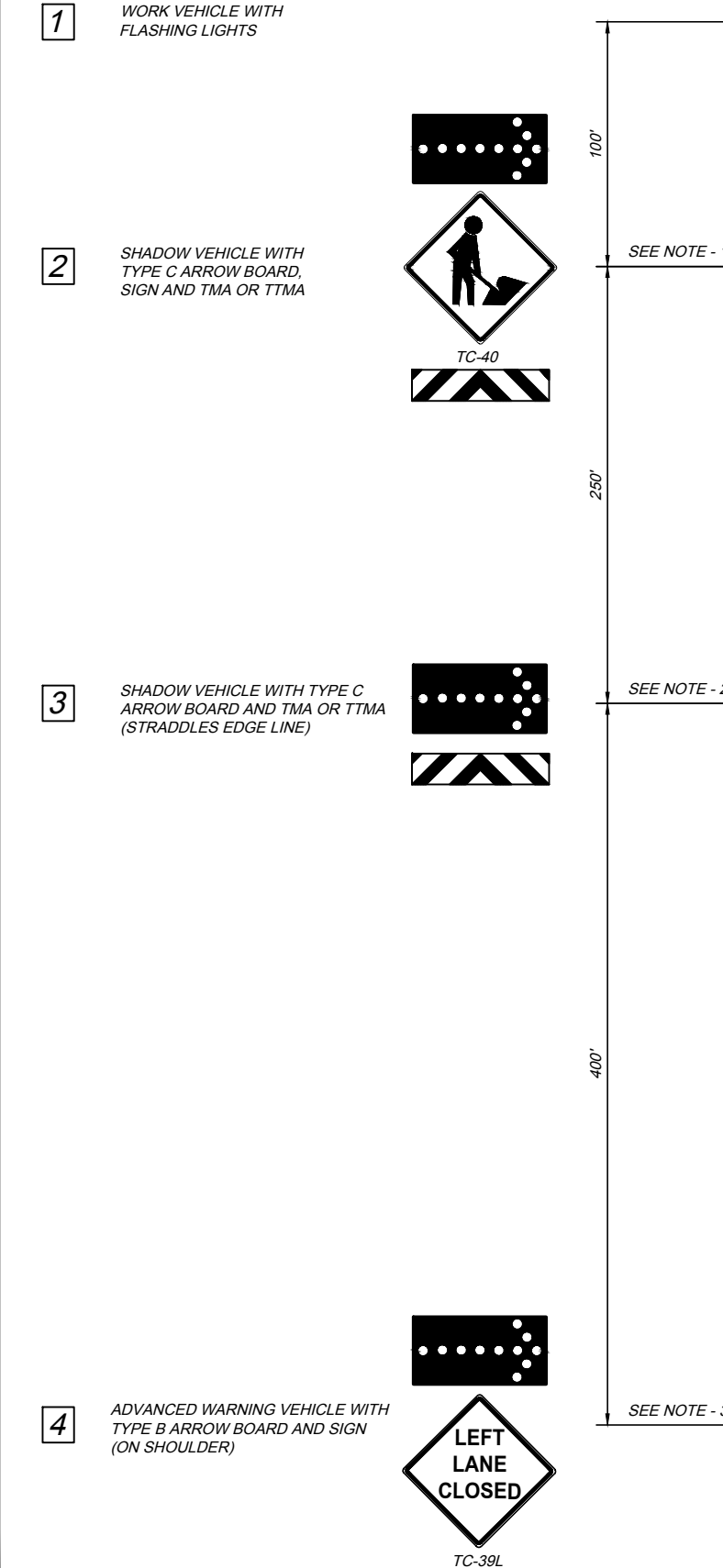


TCR-11MZ 2017.10.20.dwg; 12/24/18 - 10:05am

**SINGLE LANE MOBILE OPERATION**

VEHICLE NUMBER	VEHICLE	ACTION	VEHICLE SPACING
----------------	---------	--------	-----------------



- NOTES:**
- GENERAL: WHEN POSSIBLE, WORKERS SHALL EXIT WORK VEHICLE ON NON-TRAFFIC SIDE.
- ADJUST AS NECESSARY TO PREVENT VEHICLE INTRUSION (NOT TO EXCEED 150').
  - ADJUST AS NECESSARY TO PREVENT VEHICLE INTRUSION AND TO PROVIDE ADEQUATE SIGHT DISTANCE. (NOT TO EXCEED 250').
  - ADVANCE WARNING VEHICLE 4 SHOULD TRAVEL AT A VARYING DISTANCE FROM THE WORK OPERATION SO AS TO PROVIDE ADEQUATE SIGHT DISTANCE FOR VEHICULAR TRAFFIC APPROACHING FROM THE REAR.
  - SEE TCR-1 FOR DEFINITIONS.
- LEGEND**
- MOVING ZONE - ROADWAY CLOSED TO TRAFFIC
  - ARROW BOARD TYPE C AS INDICATED, PER CURRENT ODOT APPROVED LIST
  - TRUCK-MOUNTED ATTENUATOR (TMA) OR TOWABLE TRAILER - MOUNTED ATTENUATOR (TTMA)

**SINGLE LANE MOBILE OPERATION**

VEHICLE SPACING	ACTION	VEHICLE	VEHICLE NUMBER
-----------------	--------	---------	----------------

