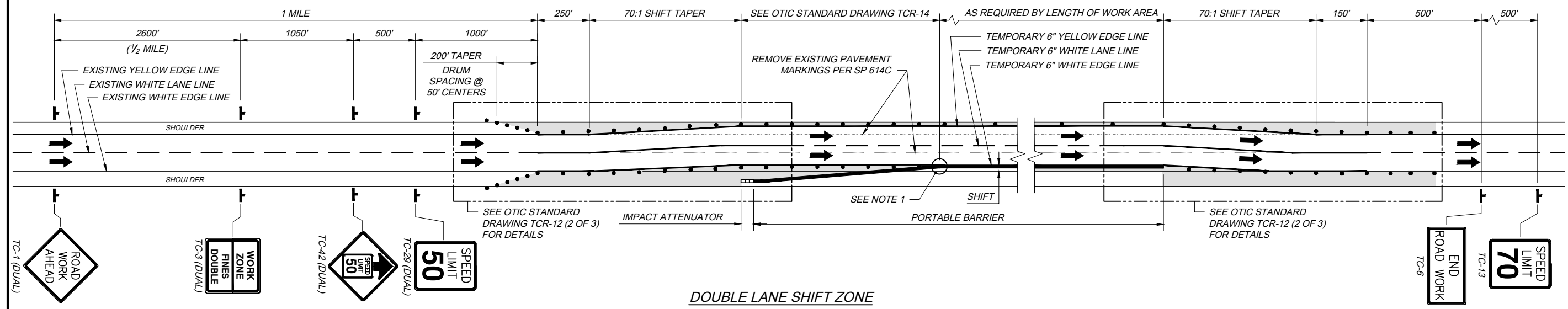
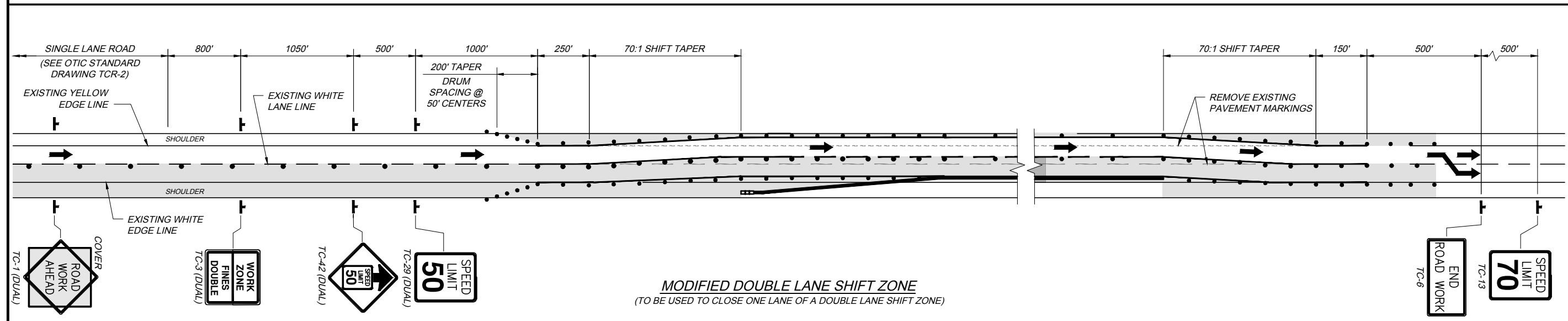


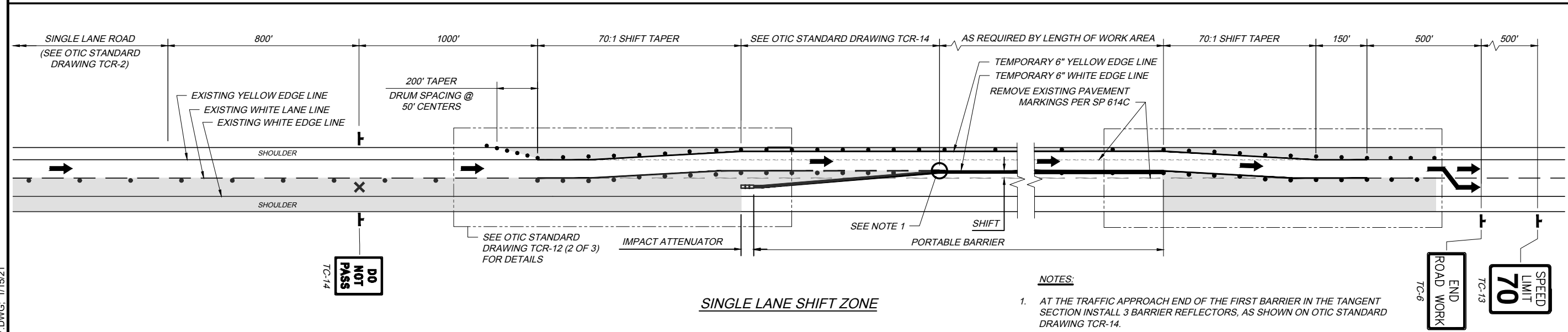
TCR-12 2021.01.07.DWG: 1/15/21



DOUBLE LANE SHIFT ZONE



MODIFIED DOUBLE LANE SHIFT ZONE
(TO BE USED TO CLOSE ONE LANE OF A DOUBLE LANE SHIFT ZONE)



SINGLE LANE SHIFT ZONE

NOTES:

1. AT THE TRAFFIC APPROACH END OF THE FIRST BARRIER IN THE TANGENT SECTION INSTALL 3 BARRIER REFLECTORS, AS SHOWN ON OTIC STANDARD DRAWING TCR-14.
2. TEMPORARY PAVEMENT MARKING SHALL BE ITEM 614, CLASS 1.
3. FOR LEGEND AND DETAILS, SEE OTIC STANDARD DRAWING TCR-2.
4. FOR DEFINITIONS SEE OTIC STANDARD DRAWING TCR-1.

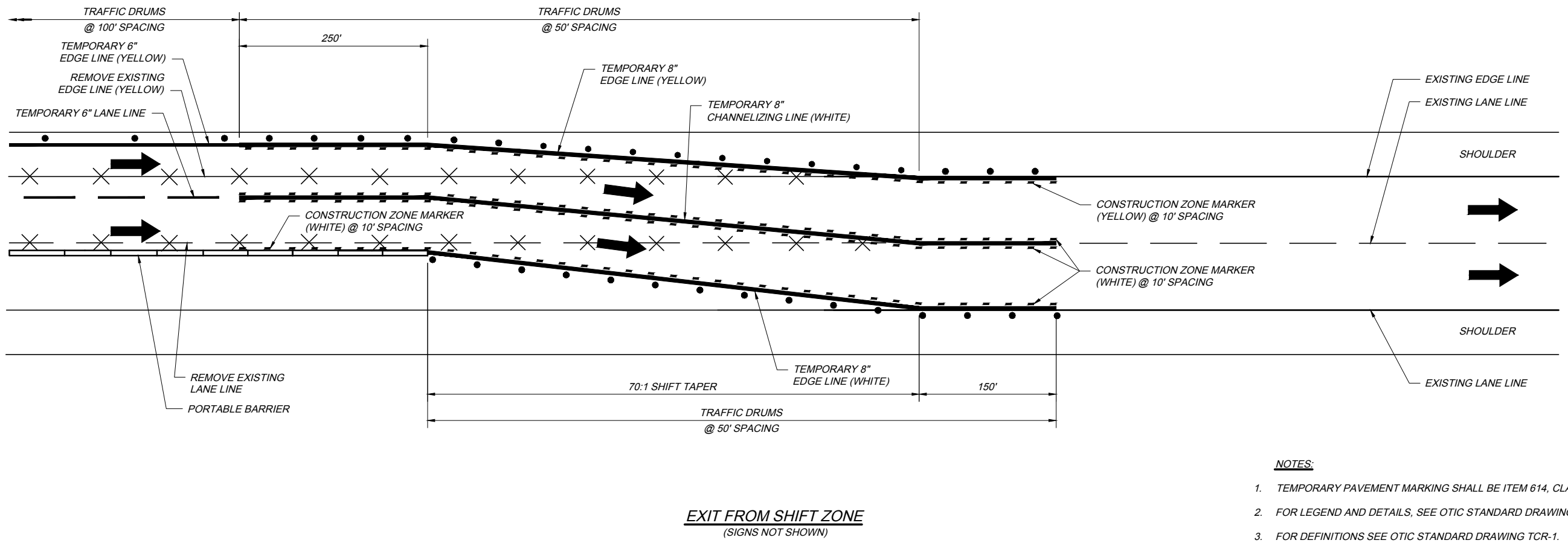
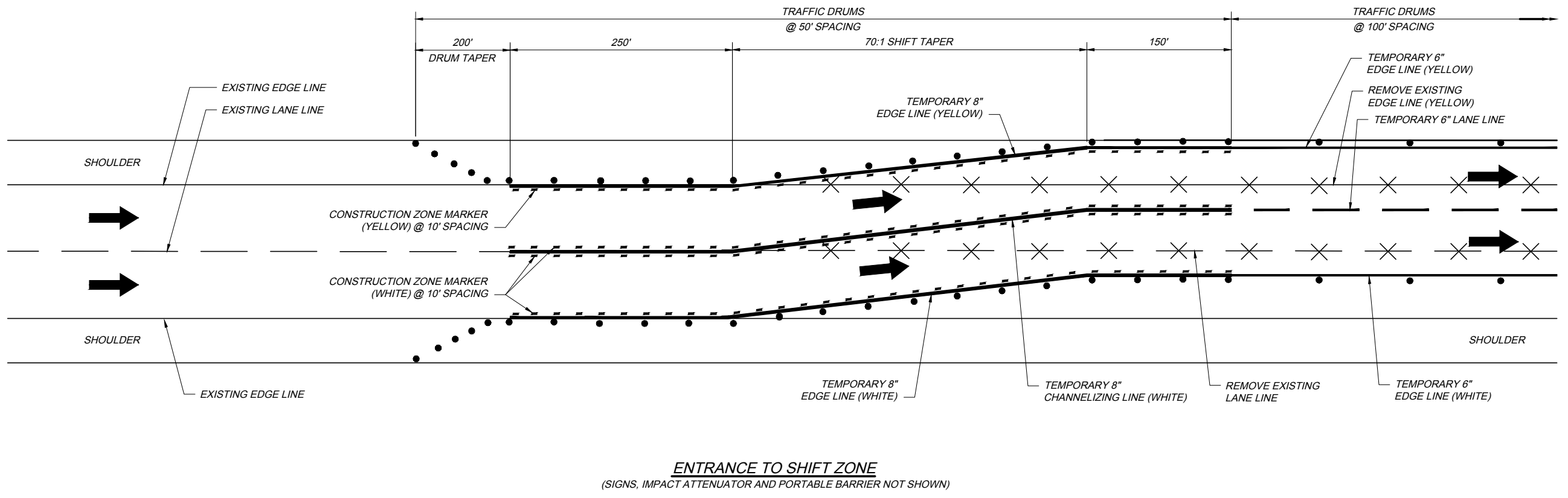
DATE: JANUARY 7, 2021

STANDARD DRAWING

TEMPORARY TRAFFIC CONTROL SINGLE AND DOUBLE LANE SHIFT ZONES

TCR-12

2 / 3



- NOTES:**
1. TEMPORARY PAVEMENT MARKING SHALL BE ITEM 614, CLASS 1.
 2. FOR LEGEND AND DETAILS, SEE OTIC STANDARD DRAWING TCR-2.
 3. FOR DEFINITIONS SEE OTIC STANDARD DRAWING TCR-1.

TCR-12 2021.01.07.DWG; 1/15/21

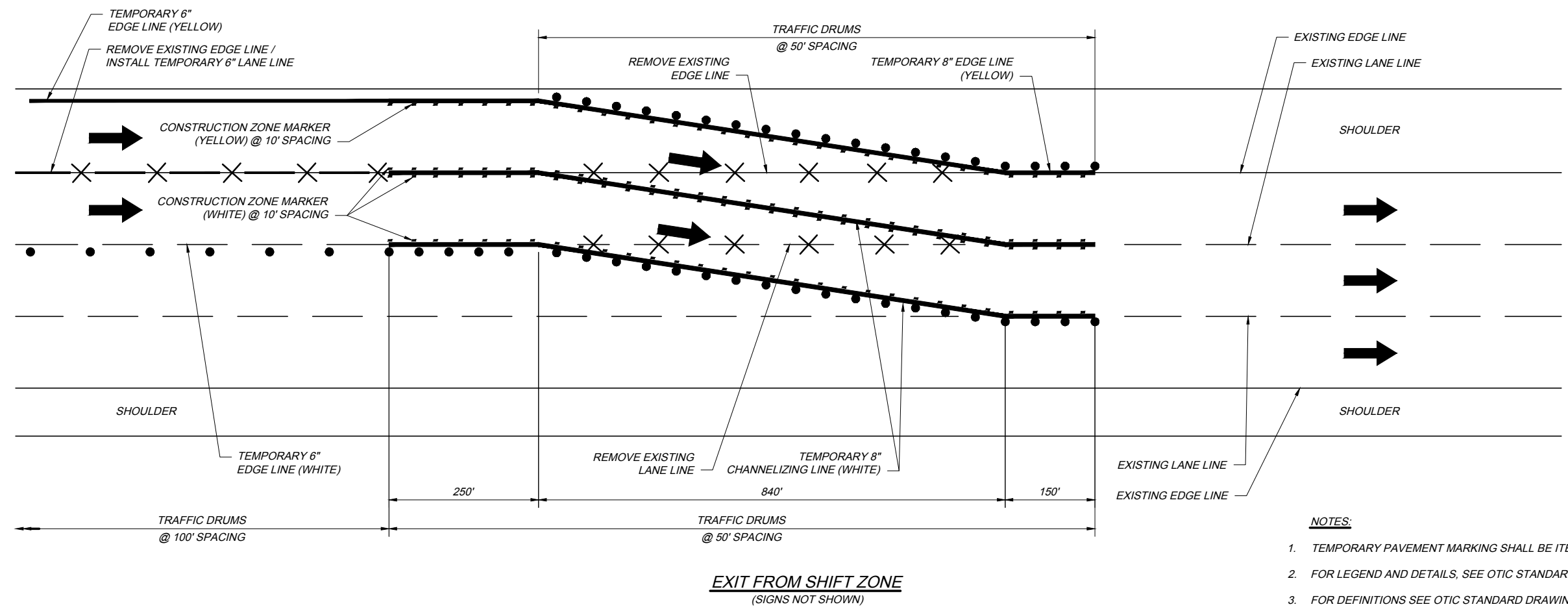
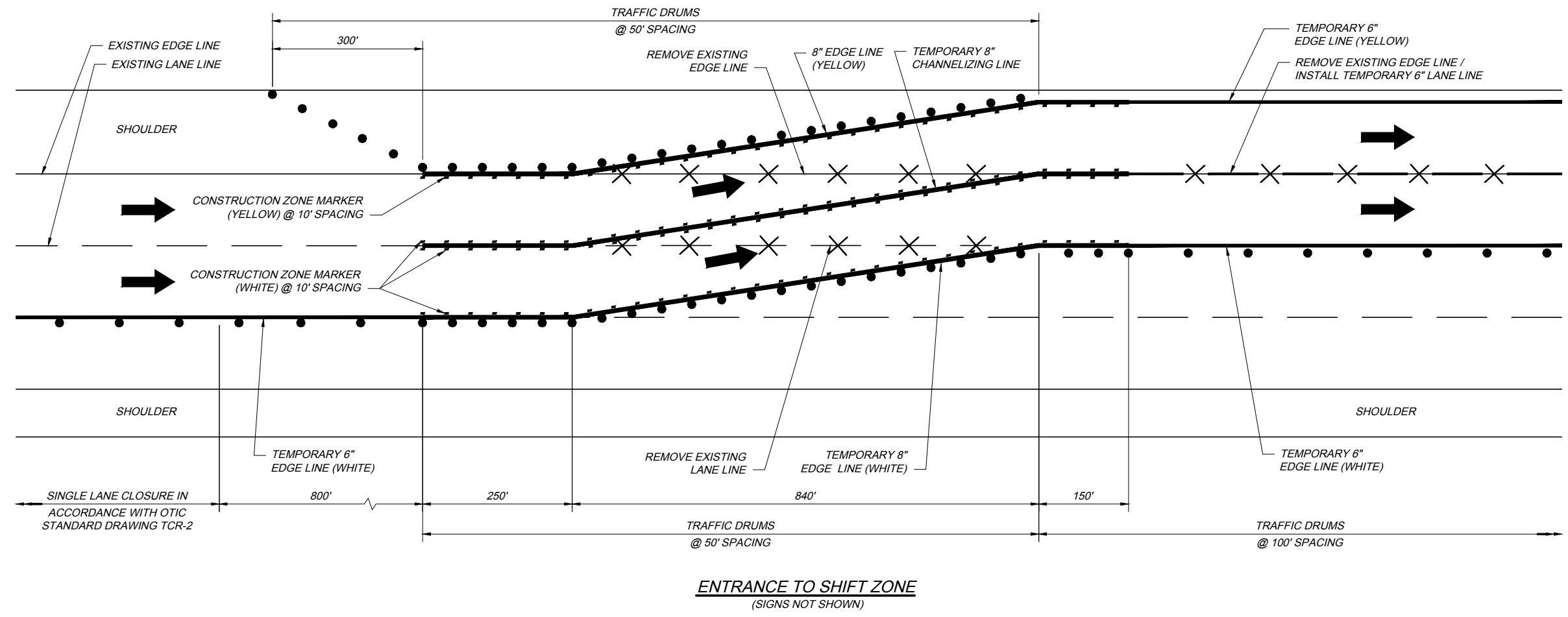
DATE: JANUARY 7, 2021

STANDARD DRAWING

TEMPORARY TRAFFIC CONTROL SINGLE AND DOUBLE LANE SHIFT ZONES

TCR-12

3 / 3



- NOTES:**
1. TEMPORARY PAVEMENT MARKING SHALL BE ITEM 614, CLASS 1.
 2. FOR LEGEND AND DETAILS, SEE OTIC STANDARD DRAWING TCR-2.
 3. FOR DEFINITIONS SEE OTIC STANDARD DRAWING TCR-1.

TCR-12 2021.01.07.DWG; 1/15/21