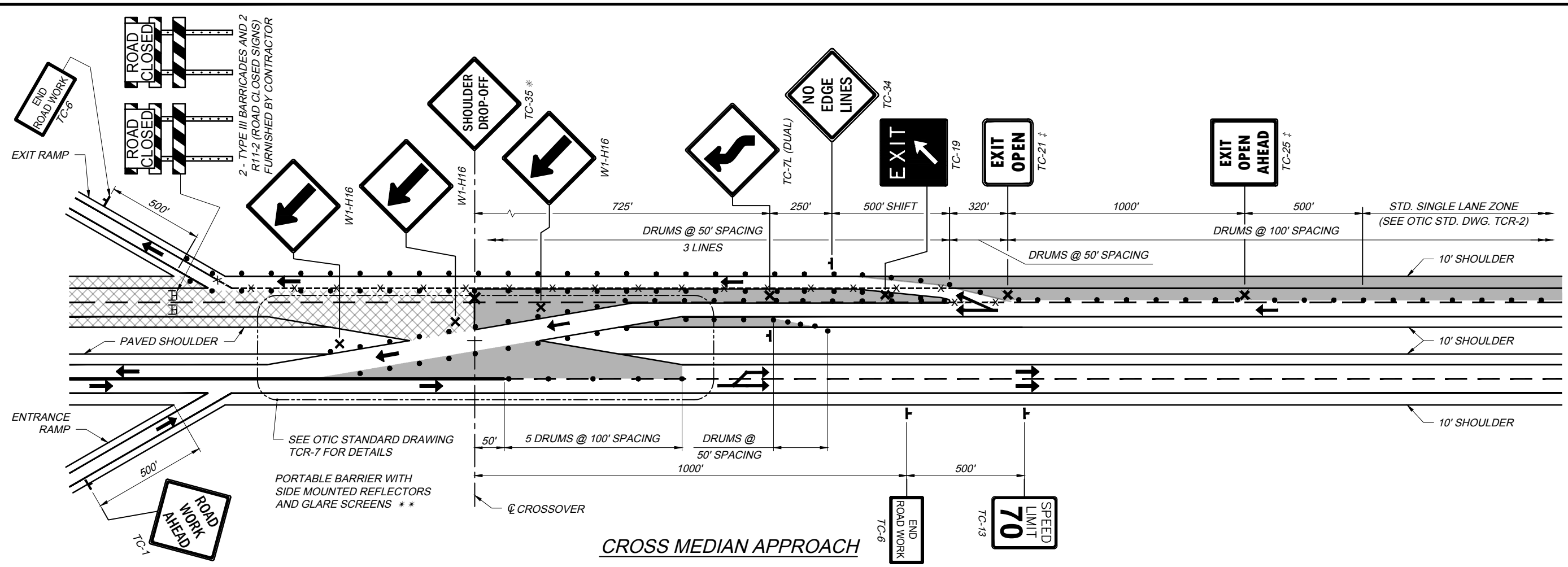
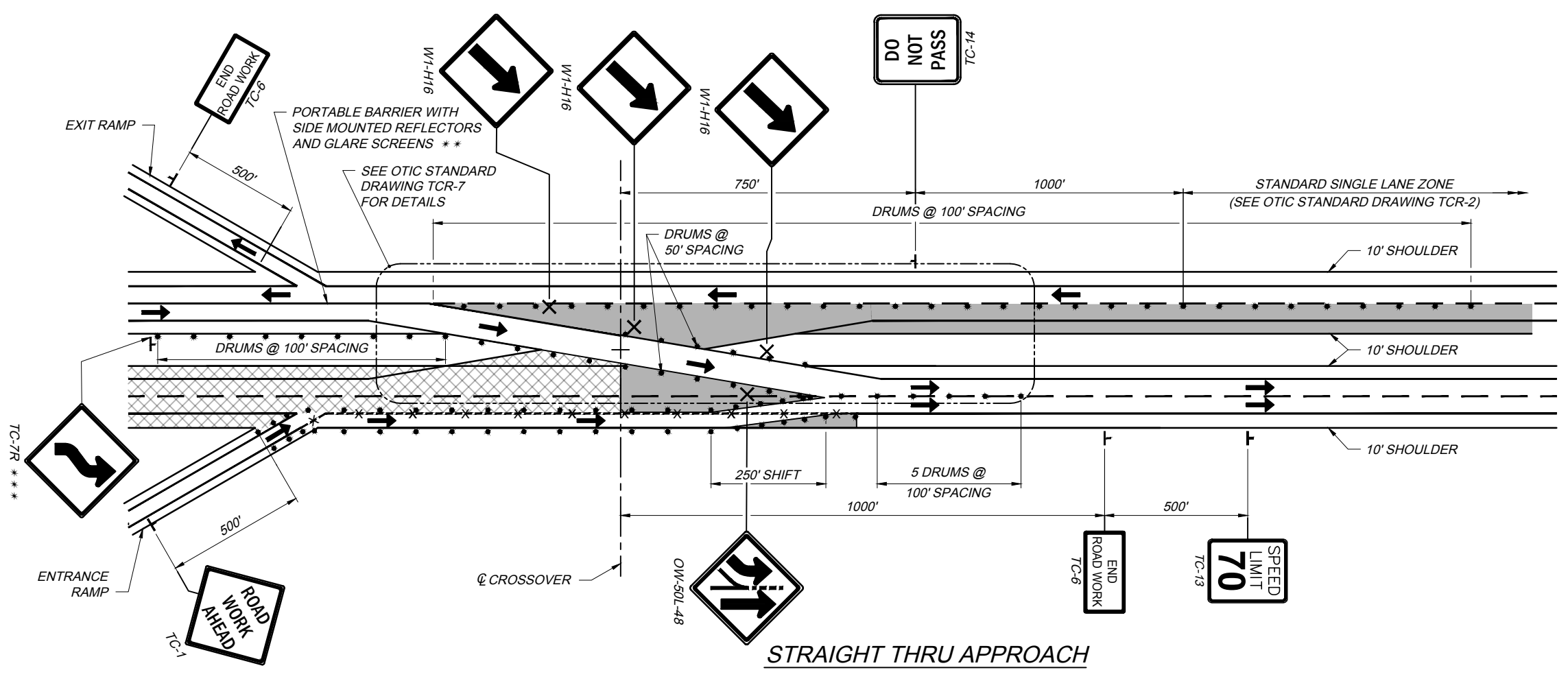


TCR-5 2021.01.07.dwg; 1/14/21



CROSS MEDIAN APPROACH



STRAIGHT THRU APPROACH

- NOTES**
- SEE OTIC STANDARD DRAWING TCR-5 (SHEET 2 OF 2) FOR EXIT RAMP DETAILS.
  - SEE OTIC STANDARD DRAWING TCR-7 FOR CROSSOVER DETAILS.
  - \* - THE TC-35 "SHOULDER DROP-OFF" SIGN SHALL BE INSTALLED ONLY WHEN THE EDGE DROP OFF EXCEEDS 3".
  - \*\* - SEE SPECIAL PROVISION, ITEM SPECIAL - GLARE SCREENS. FOR ADDITIONAL INFORMATION REGARDING TYPE AND INSTALLATION OF GLARE SCREENS. ALL COST ASSOCIATED WITH GLARE SCREENS SHALL BE INCLUDED IN LUMP SUM BID PRICE FOR SP 622 - PORTABLE BARRIER AND SHALL INCLUDE FURNISHING, INSTALLATION, MAINTAINING, MOVING, TRANSPORTING, STORING AND RESETING, AS REQUIRED, OF THE GLARE SCREEN THROUGHOUT THE TERM OF THE CONTRACT.
  - \*\*\* - LOCATE TC-7R 725 FEET FROM CENTER LINE OF CROSSOVER.
  - ‡ - ADD ROUTE MARKER(S) FOR CONNECTING ROADWAYS TO TOP OF TC-21 AND TC-25 SIGNS.
- FOR LEGENDS AND DETAILS SEE OTIC STANDARD DRAWING TCR-2.

- LEGEND**
- x---x- REMOVE EDGE LINE AND / OR LANE LINE AND RPM REFLECTORS

DATE: JANUARY 7, 2021

**STANDARD DRAWING**

TEMPORARY TRAFFIC CONTROL  
TWO LANE SPECIAL BI-DIRECTIONAL ZONE

**TCR-5**

**OHIO TURNPIKE AND INFRASTRUCTURE COMMISSION**

1 / 2

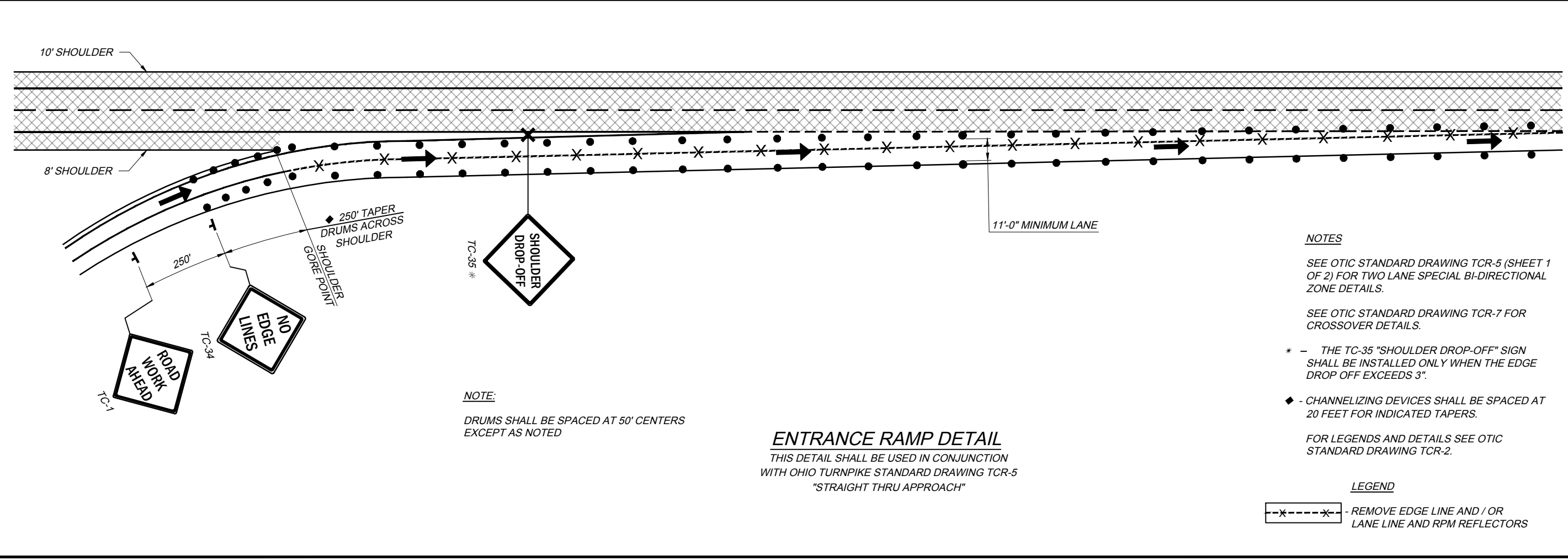
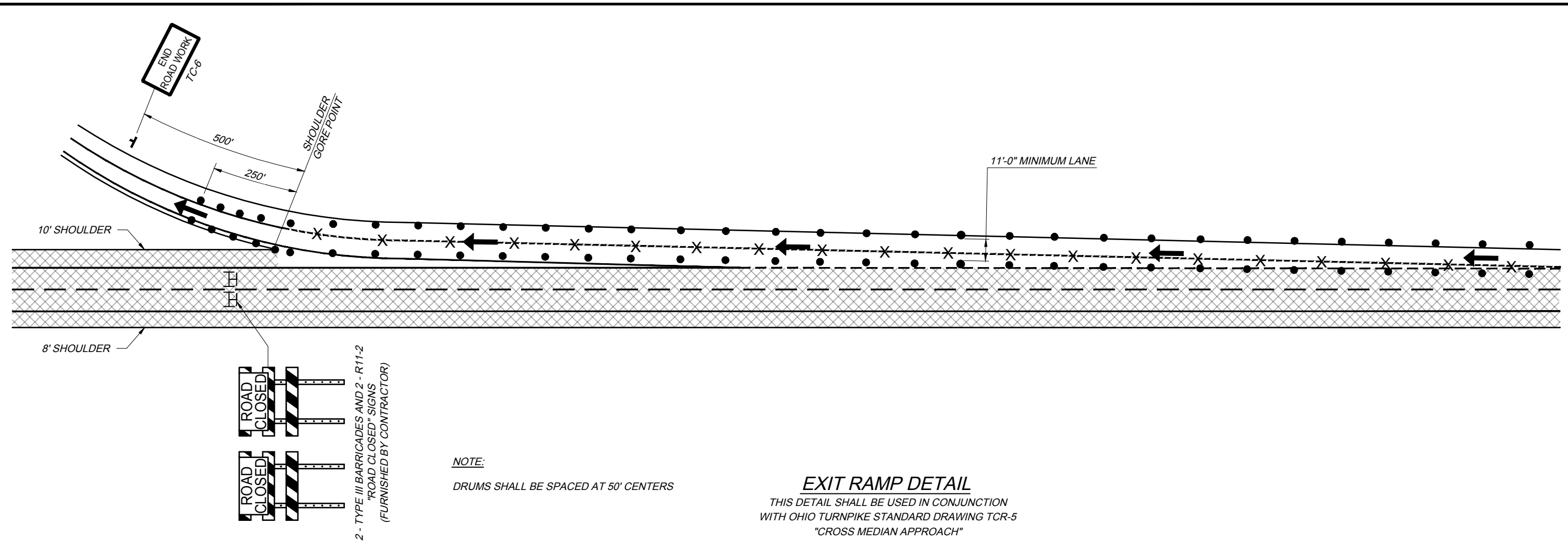
DATE: JANUARY 7, 2021

STANDARD DRAWING

TEMPORARY TRAFFIC CONTROL  
TWO LANE SPECIAL BI-DIRECTIONAL ZONE

TCR-5

2 / 2



**NOTES**

SEE OTIC STANDARD DRAWING TCR-5 (SHEET 1 OF 2) FOR TWO LANE SPECIAL BI-DIRECTIONAL ZONE DETAILS.

SEE OTIC STANDARD DRAWING TCR-7 FOR CROSSOVER DETAILS.

\* - THE TC-35 "SHOULDER DROP-OFF" SIGN SHALL BE INSTALLED ONLY WHEN THE EDGE DROP OFF EXCEEDS 3".

◆ - CHANNELIZING DEVICES SHALL BE SPACED AT 20 FEET FOR INDICATED TAPERS.

FOR LEGENDS AND DETAILS SEE OTIC STANDARD DRAWING TCR-2.

**LEGEND**

---x---x--- - REMOVE EDGE LINE AND / OR LANE LINE AND RPM REFLECTORS

TCR-5 2021.01.07.dwg; 1/14/21