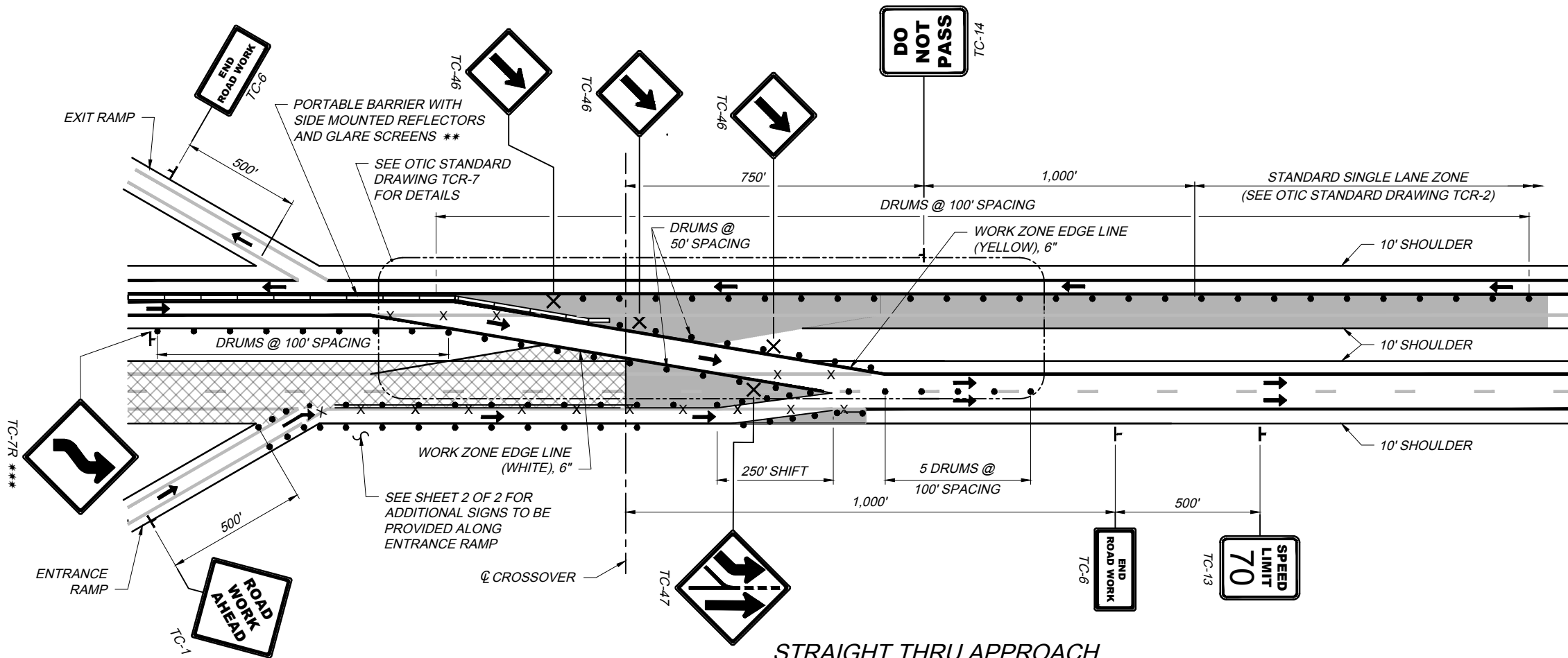


CROSS MEDIAN APPROACH



STRAIGHT THRU APPROACH

NOTES:

- SEE OTIC STANDARD DRAWING TCR-1 FOR ADDITIONAL NOTES AND DEFINITIONS, INCLUDING GUIDANCE FOR ESTABLISHING WORK ZONE SPEED LIMITS.
- SEE OTIC STANDARD DRAWING TCR-2 FOR ADDITIONAL NOTES, DETAILS AND LEGEND.
- SEE OTIC STANDARD DRAWING TCR-7 FOR ADDITIONAL DETAILS.
- LIGHTING SHALL BE INSTALLED PER ODOT STANDARD CONSTRUCTION DRAWING MT-100.00.

LEGEND

* - THE TC-35 "SHOULDER DROP-OFF" SIGN SHALL BE INSTALLED ONLY WHEN THE EDGE DROP OFF EXCEEDS 3".

** - SEE SPECIAL PROVISION, ITEM SPECIAL - GLARE SCREENS. FOR ADDITIONAL INFORMATION REGARDING TYPE AND INSTALLATION OF GLARE SCREENS. ALL COST ASSOCIATED WITH GLARE SCREENS SHALL BE INCLUDED IN LUMP SUM BID PRICE FOR SP 622 - PORTABLE BARRIER AND SHALL INCLUDE FURNISHING, INSTALLATION, MAINTAINING, MOVING, TRANSPORTING, STORING AND RESETTING, AS REQUIRED, OF THE GLARE SCREEN THROUGHOUT THE TERM OF THE CONTRACT.

*** - LOCATE TC-7R 725 FEET FROM CENTER LINE OF CROSSOVER.

‡ - ADD ROUTE MARKER(S) FOR CONNECTING ROADWAYS TO TOP OF TC-21 AND TC-25 SIGNS.

TCR-5

TEMPORARY TRAFFIC CONTROL
TWO LANE SPECIAL BI-DIRECTIONAL ZONE

STANDARD DRAWING

DATE: JUNE 10, 2025

1 / 2

TCR-5 2025.06.10.dwg; 6/16/25

