

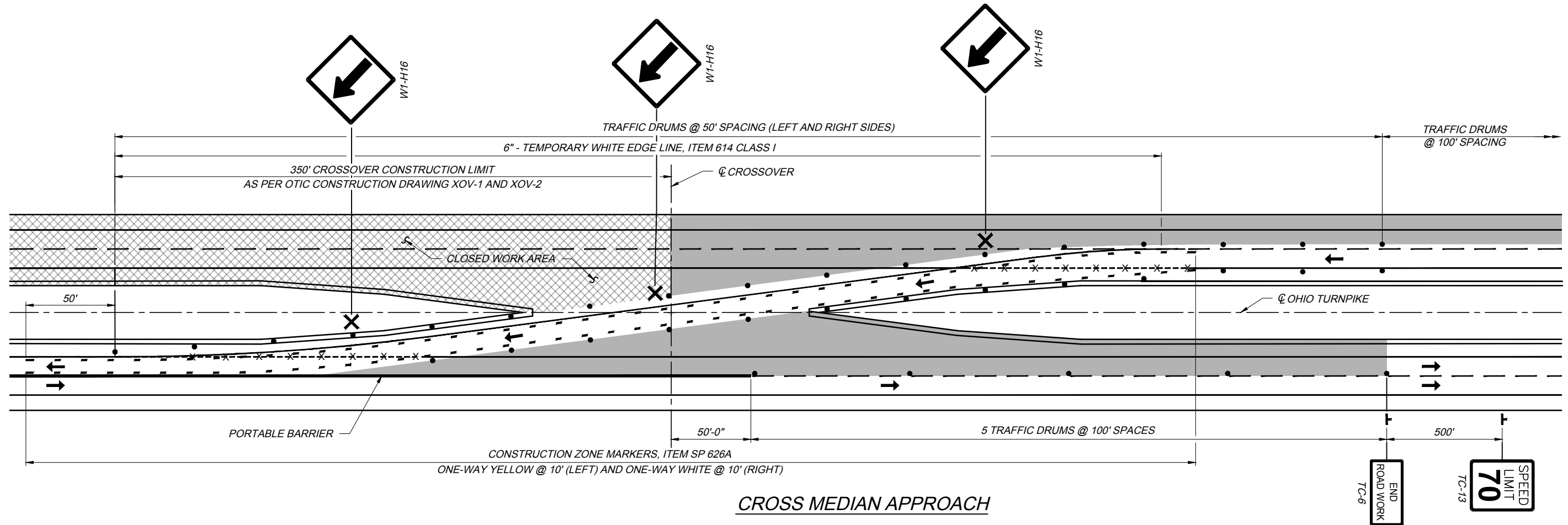
DATE: JANUARY 7, 2021

STANDARD DRAWING

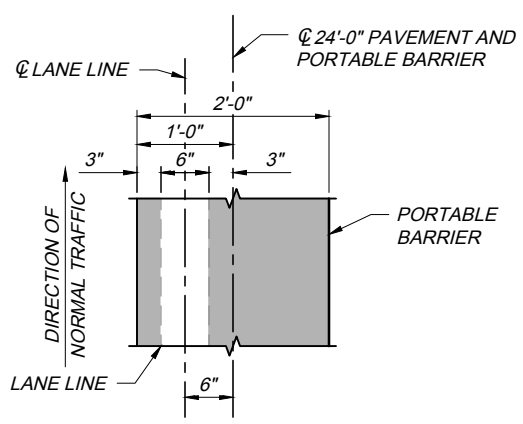
TEMPORARY TRAFFIC CONTROL
TWO LANE CROSSOVER DETAILS

TCR-7

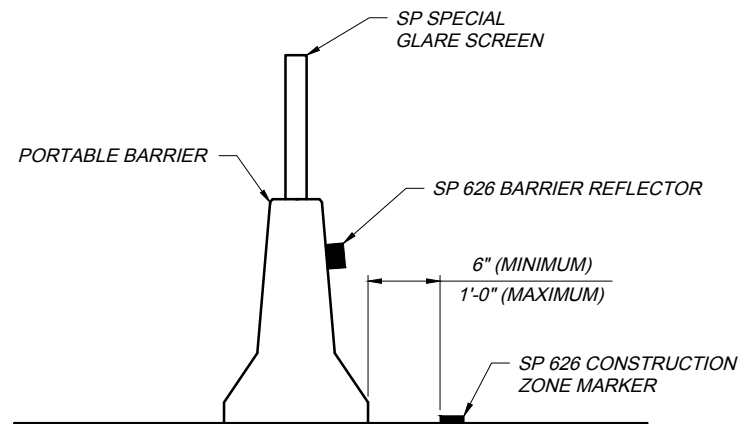
1 / 2



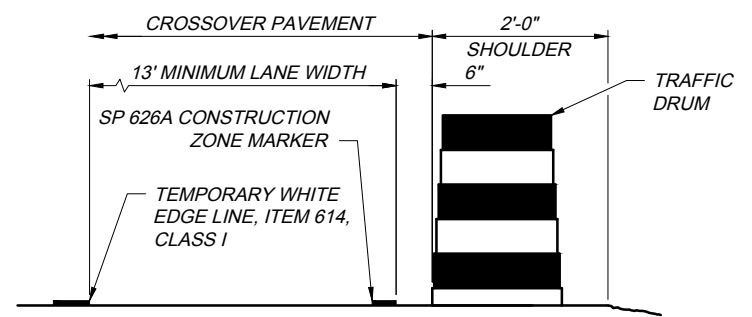
CROSS MEDIAN APPROACH



TYPICAL PLACEMENT PLAN DETAIL
PORTABLE BARRIER



PORTABLE BARRIER WITHIN CROSSOVERS
TYPICAL LAYOUT CONSTRUCTION ZONE MARKERS

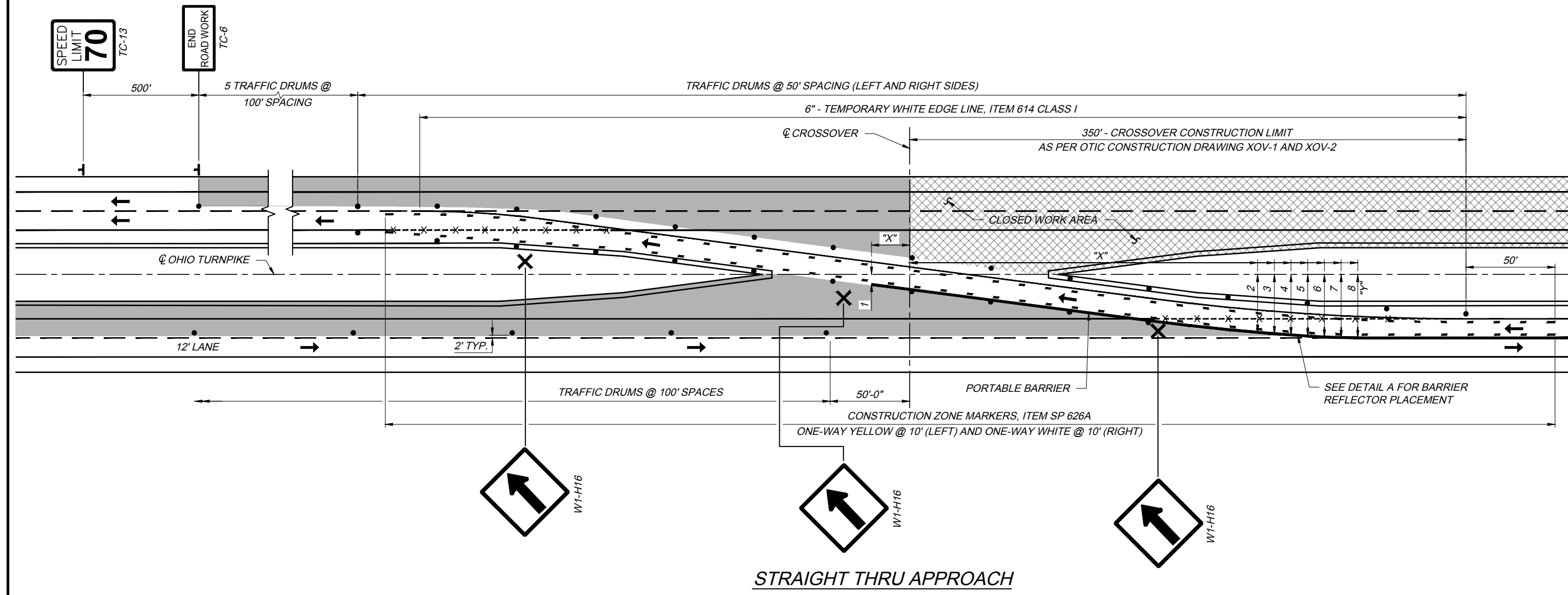


CROSSOVER LANE / EDGE DETAIL

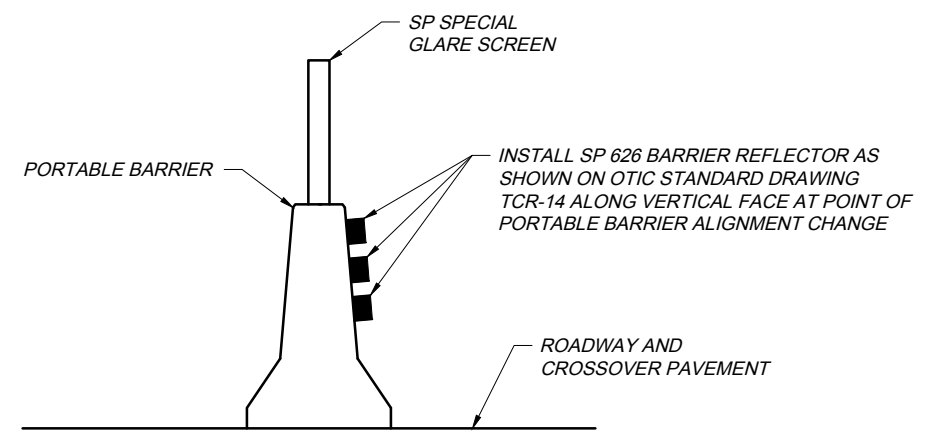
NOTES:
SEE OTIC STANDARD DRAWING TCR-2 FOR ADDITIONAL LEGENDS AND DETAILS.

- LEGEND
- REMOVE EDGE LINE AND / OR LANE LINE AND RPM REFLECTORS
 - SP 626A CONSTRUCTION ZONE MARKERS

TCR-7 2021.01.07.dwg; 1/14/21



STRAIGHT THRU APPROACH



DETAIL A
PORTABLE BARRIER
REFLECTOR PLACEMENT

BARRIER PLACEMENT		
POINT	"X"	"Y"
1	-24.0'	9.0'
2	190.0'	36.1'
3	200.0'	37.3'
4	210.0'	38.3'
5	220.0'	38.9'
6	230.0'	39.5'
7	240.0'	39.8'
8	250.0'	40.0'

NOTES:

PORTABLE BARRIER PLACEMENT GUIDE

ORIGIN BEING TAKEN AS INTERSECTION OF ϕ OF CROSSOVER AND ϕ OHIO TURNPIKE.

"Y" DISTANCE IS MEASURED TO THE ϕ OF THE BARRIER.

THIS DRAWING IS TO BE USED AS A GUIDE. THE FINAL LAY-OUT OF THE PORTABLE BARRIER SHALL BE FIELD VERIFIED AND ADJUSTED AS NEEDED, BY THE CHIEF ENGINEER. ADDITIONAL ADJUSTMENTS MAY BE MADE TO TEMPORARY TRAFFIC CONTROL DEVICES TO INSURE PROPER PLACEMENT.

SEE OTIC STANDARD DRAWING TCR-2 FOR ADDITIONAL LEGENDS AND DETAILS.

SEE OTIC STANDARD DRAWING TCR-3 FOR DETAILS NOT SHOWN.

LEGEND

- REMOVE EDGE LINE AND / OR LANE LINE AND RPM REFLECTORS
- SP 626A CONSTRUCTION ZONE MARKERS