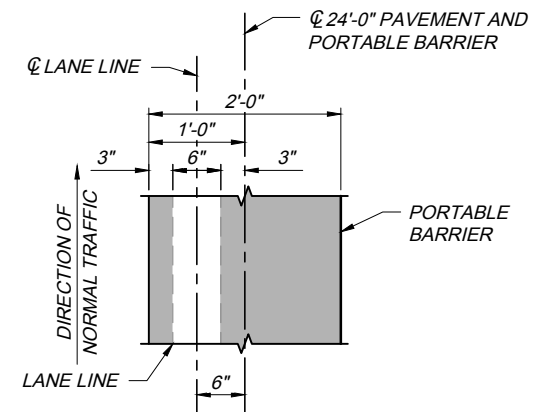
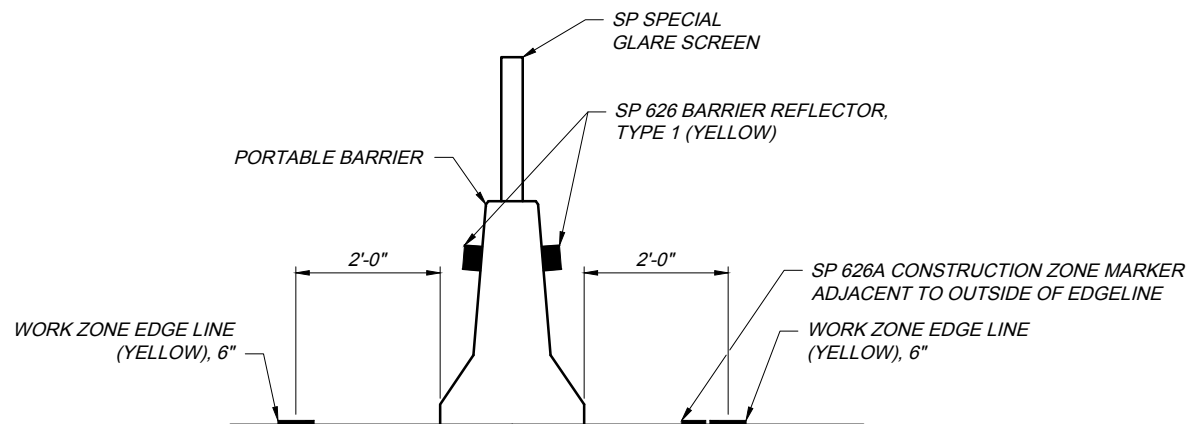
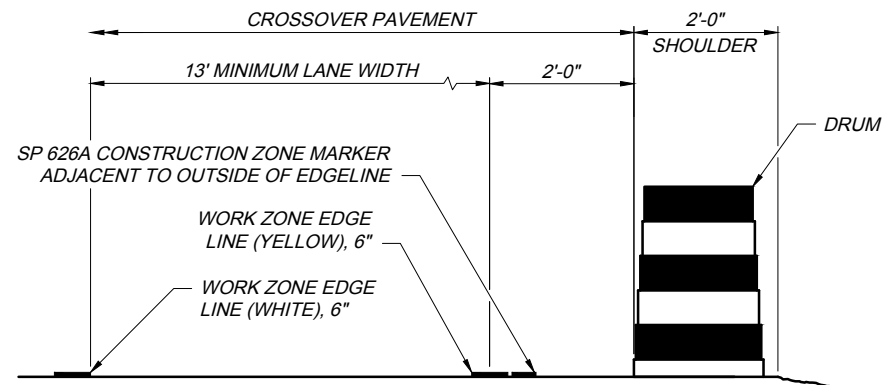
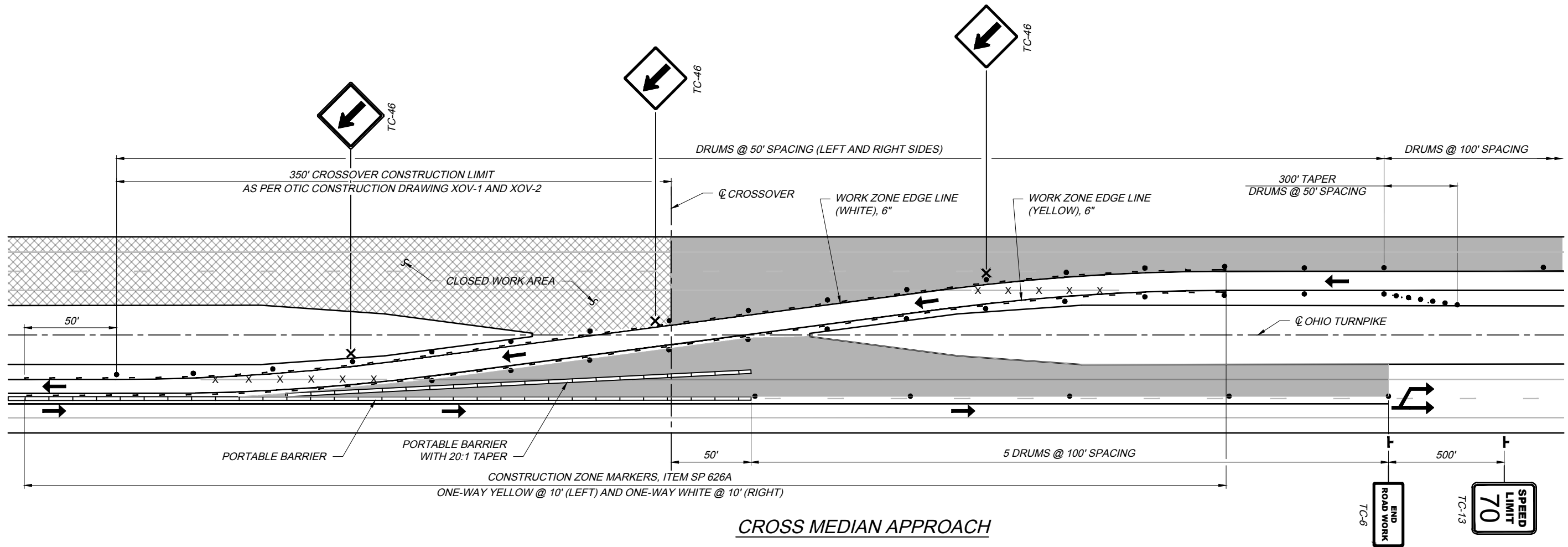


TCR-7 2025.06.10.dwg; 6/25/25



NOTES:

- SEE OTIC STANDARD DRAWING TCR-1 FOR ADDITIONAL NOTES AND DEFINITIONS, INCLUDING GUIDANCE FOR ESTABLISHING WORK ZONE SPEED LIMITS AND THE USE OF VARIABLE SPEED ZONES.
- SEE OTIC STANDARD DRAWING TCR-2 FOR ADDITIONAL NOTES, DETAILS AND LEGEND.
- SEE OTIC STANDARD DRAWING TCR-3 FOR ADDITIONAL DETAILS.
- ALL WORK ZONE PAVEMENT MARKINGS SHALL BE ITEM 614, CLASS I.
- LIGHTING SHALL BE INSTALLED PER ODOT STANDARD CONSTRUCTION DRAWING MT-100.00.

TEMPORARY TRAFFIC CONTROL
TWO LANE CROSSOVER DETAILS

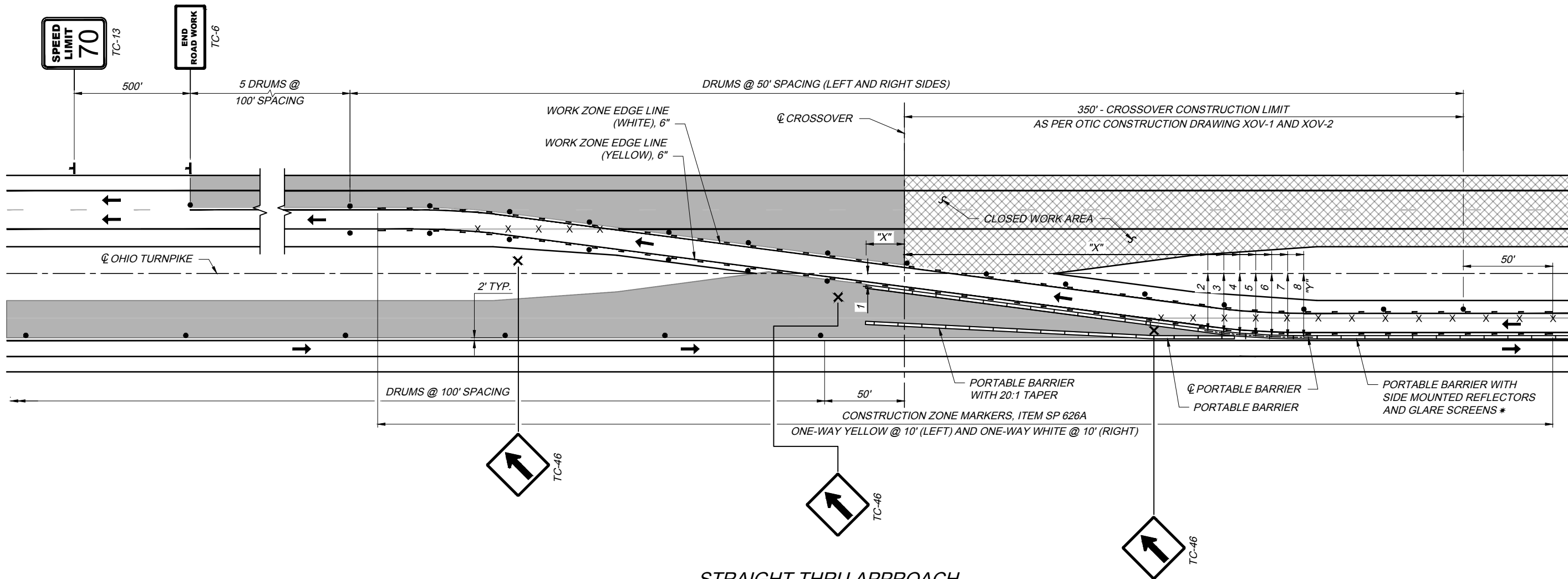
TCR-7

1 / 2

STANDARD DRAWING

DATE: JUNE 10, 2025

TCR-7 2025.06.10.dwg; 6/16/25



STRAIGHT THRU APPROACH

BARRIER PLACEMENT		
POINT	"X"	"Y"
1	-24.0'	9.0'
2	190.0'	36.1'
3	200.0'	37.3'
4	210.0'	38.3'
5	220.0'	38.9'
6	230.0'	39.5'
7	240.0'	39.8'
8	250.0'	40.0'

PORTABLE BARRIER PLACEMENT GUIDE

- A. ORIGIN BEING TAKEN AT INTERSECTION OF ϕ OF CROSSOVER AND ϕ OHIO TURNPIKE.
- B. "Y" DISTANCE IS MEASURED TO THE ϕ OF THE BARRIER.
- C. THIS DRAWING IS TO BE USED AS A GUIDE. THE FINAL LAY-OUT OF THE PORTABLE BARRIER SHALL BE FIELD VERIFIED AND ADJUSTED AS NEEDED, BY THE CHIEF ENGINEER. ADDITIONAL ADJUSTMENTS MAY BE MADE TO TEMPORARY TRAFFIC CONTROL DEVICES TO INSURE PROPER PLACEMENT.

NOTES:

- SEE OTIC STANDARD DRAWING TCR-1 FOR ADDITIONAL NOTES AND DEFINITIONS, INCLUDING GUIDANCE FOR ESTABLISHING WORK ZONE SPEED LIMITS AND THE USE OF VARIABLE SPEED ZONES.
- SEE OTIC STANDARD DRAWING TCR-2 FOR ADDITIONAL NOTES, DETAILS AND LEGEND.
- SEE OTIC STANDARD DRAWING TCR-3 FOR ADDITIONAL DETAILS.
- ALL WORK ZONE PAVEMENT MARKINGS SHALL BE ITEM 614, CLASS I.
- LIGHTING SHALL BE INSTALLED PER ODOT STANDARD CONSTRUCTION DRAWING MT-100.00.

LEGEND

- * - SEE SPECIAL PROVISION, ITEM SPECIAL - GLARE SCREENS, FOR ADDITIONAL INFORMATION REGARDING TYPE AND INSTALLATION OF GLARE SCREENS. ALL COST ASSOCIATED WITH GLARE SCREENS SHALL BE INCLUDED IN LUMP SUM BID PRICE FOR SP 622 - PORTABLE BARRIER AND SHALL INCLUDE FURNISHING, INSTALLATION, MAINTAINING, MOVING, TRANSPORTING, STORING AND RESETING, AS REQUIRED, OF THE GLARE SCREEN THROUGHOUT THE TERM OF THE CONTRACT.

STANDARD DRAWING

TEMPORARY TRAFFIC CONTROL
TWO LANE CROSSOVER DETAILS

TCR-7

2 / 2

DATE: JUNE 10, 2025



OHIO TURNPIKE AND INFRASTRUCTURE COMMISSION

