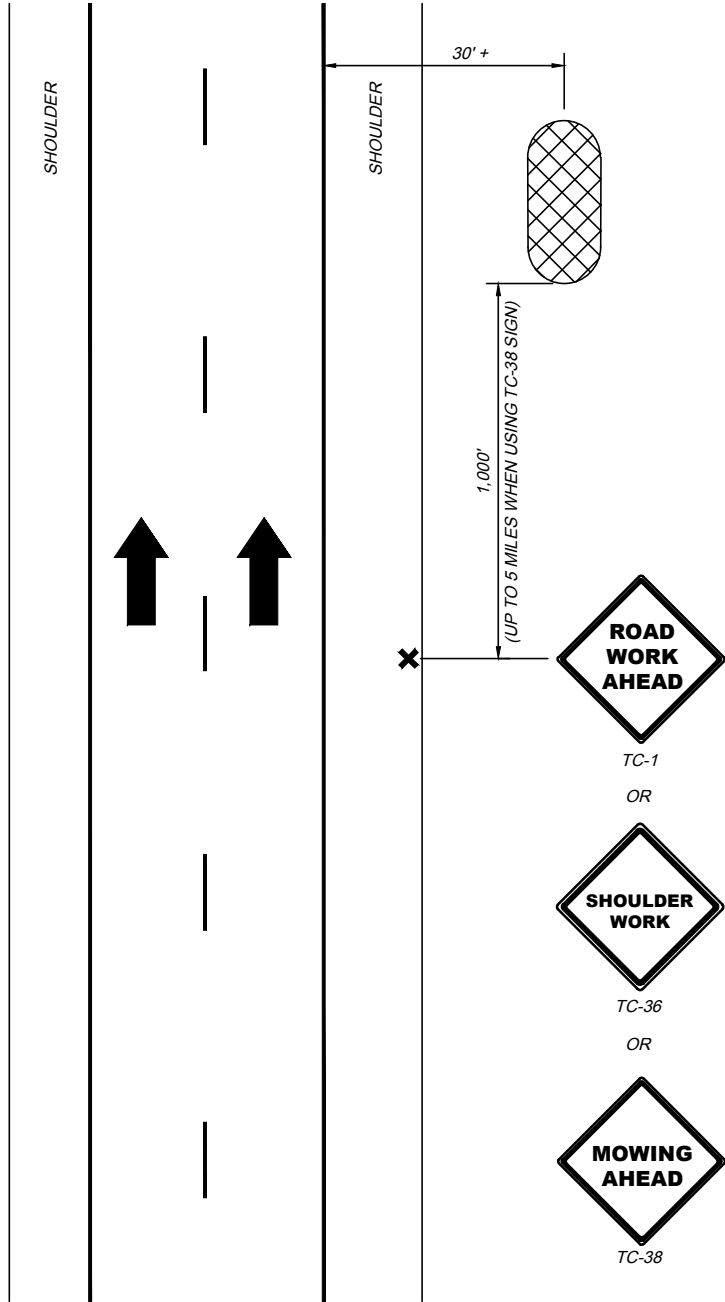


NOTES:

- SEE OTIC STANDARD DRAWING TCR-1 FOR ADDITIONAL NOTES AND DEFINITIONS.
- SEE OTIC STANDARD DRAWING TCR-2 FOR ADDITIONAL NOTES, DETAILS AND LEGEND.
- IF THE WORK AREA IS IN THE MEDIAN, PLACE AN ADVANCE WARNING SIGN ON THE LEFT AND RIGHT SIDE OF THE ROADWAY.
- THE ADVANCE WARNING SIGN(S) MAY BE OMITTED WHERE THE WORK AREA IS MORE THAN 15 FEET FROM THE EDGE OF THE ROADWAY.
- THE ADVANCE WARNING SIGN(S) MAY BE ELIMINATED IF A VEHICLE WITH ACTIVATED AMBER COLORED HIGH-INTENSITY ROTATING, FLASHING, OSCILLATING, OR STROBE LIGHTS IS USED.
- VEHICLE HAZARD WARNING SIGNALS MAY BE USED TO SUPPLEMENT BUT NOT REPLACE THE AMBER COLORED HIGH-INTENSITY ROTATING, FLASHING, OSCILLATING, OR STROBE LIGHTS PER TCR-1.

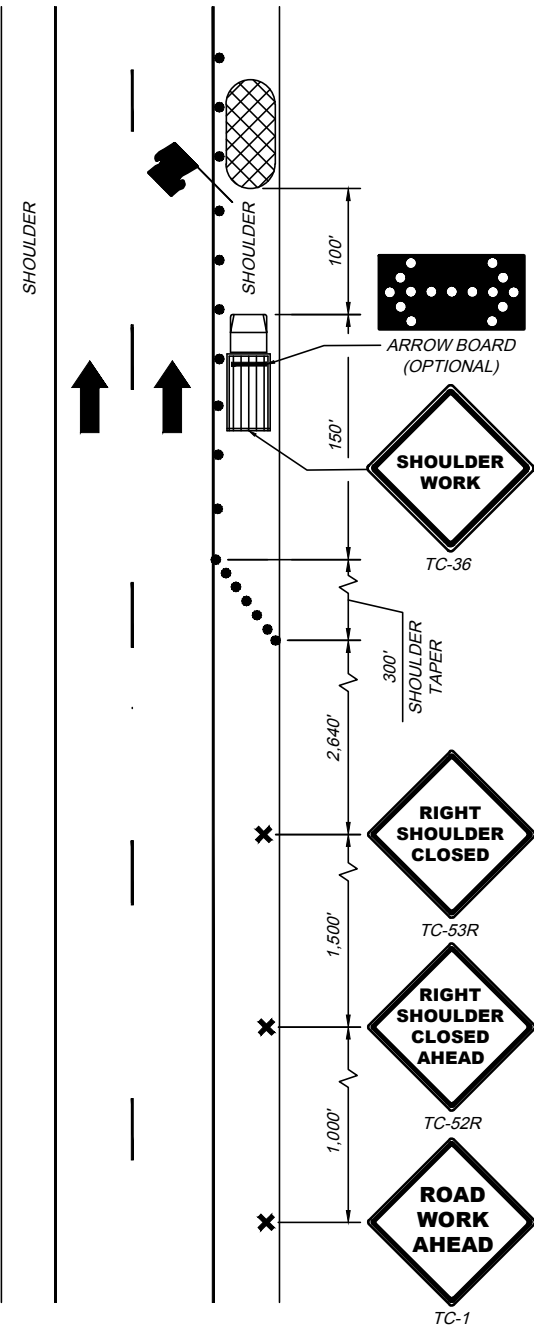
WORK BEYOND THE SHOULDER



NOTES:

- SEE OTIC STANDARD DRAWING TCR-1 FOR ADDITIONAL NOTES AND DEFINITIONS.
- SEE OTIC STANDARD DRAWING TCR-2 FOR ADDITIONAL NOTES, DETAILS AND LEGEND.
- FOR SHORT DURATION INTERMITTENT CLOSURES, WARNING SIGNS MAY BE OMITTED WHEN THE BARRIER VEHICLE DISPLAYS AMBER COLORED HIGH-INTENSITY ROTATING, FLASHING, OSCILLATING, OR STROBE LIGHTS PER TCR-1 IF THE DISTANCE BETWEEN WORK LOCATIONS IS ONE MILE OR MORE, AND IF THE BARRIER VEHICLE TRAVELS AT VEHICULAR TRAFFIC SPEEDS BETWEEN LOCATIONS.
- VEHICLE HAZARD WARNING SIGNALS MAY BE USED TO SUPPLEMENT BUT NOT REPLACE THE AMBER COLORED HIGH-INTENSITY, ROTATING, FLASHING, OSCILLATING, OR STROBE LIGHTS.
- IF AN ARROW BOARD IS USED, THE CAUTION MODE SHALL BE USED. THE ARROW BOARD MAY BE MOUNTED ON THE BARRIER VEHICLE OR IT MAY BE TRAILER MOUNTED.
- CONES SHALL BE SPACED 50 FEET CENTER TO CENTER. CONES MAY BE OMITTED FOR SHORT DURATION INTERMITTENT ZONES.
- IF THE WORK AREA IS IN THE MEDIAN, PLACE AN ADVANCE WARNING SIGN ON THE LEFT AND RIGHT SIDE OF THE ROADWAY.
- SHORT DURATION INTERMITTENT CLOSURES FOR NON-CONSTRUCTION ACTIVITIES (SURVEYING, INSPECTION, ETC.) DO NOT REQUIRE BARRIER VEHICLE OR FLAGGER; HOWEVER, THE WORK VEHICLE MUST DISPLAY AMBER COLORED HIGH-INTENSITY ROTATING, FLASHING, OSCILLATING OR STROBE LIGHTS.

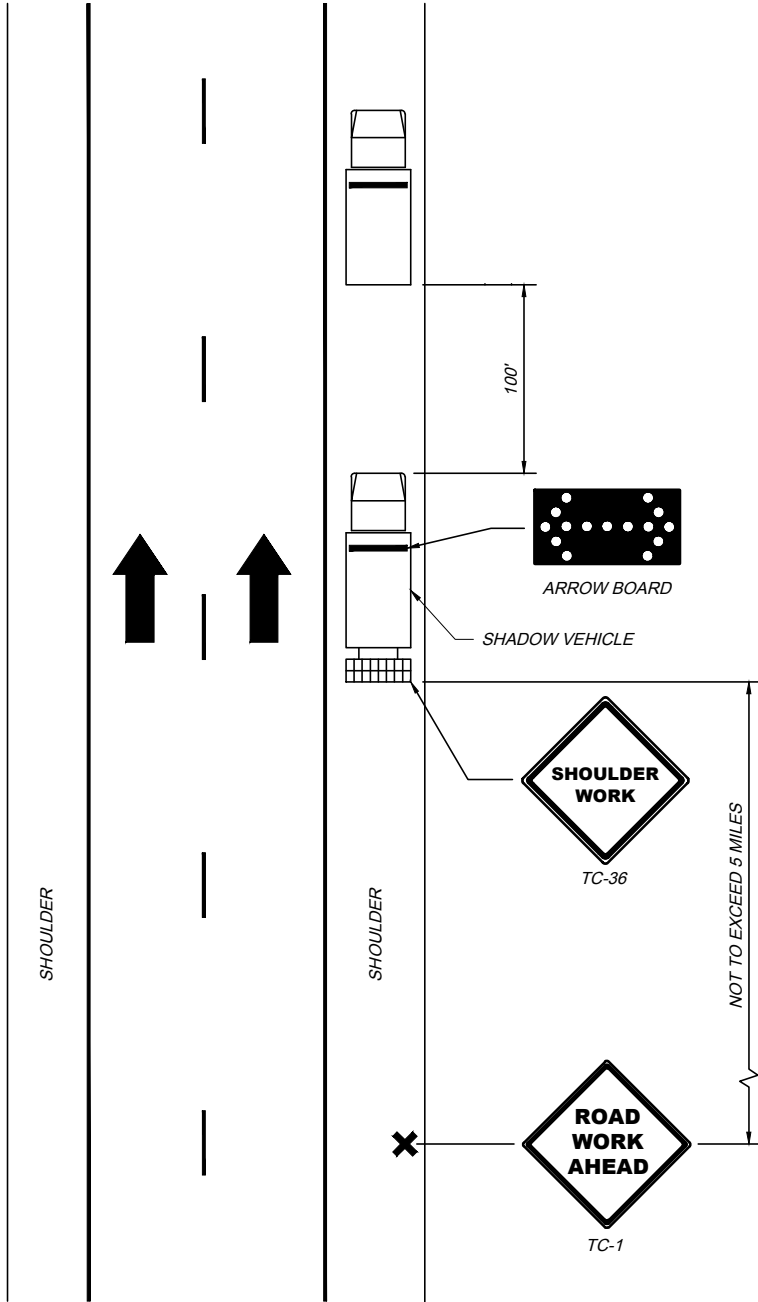
STATIONARY SHOULDER CLOSURE

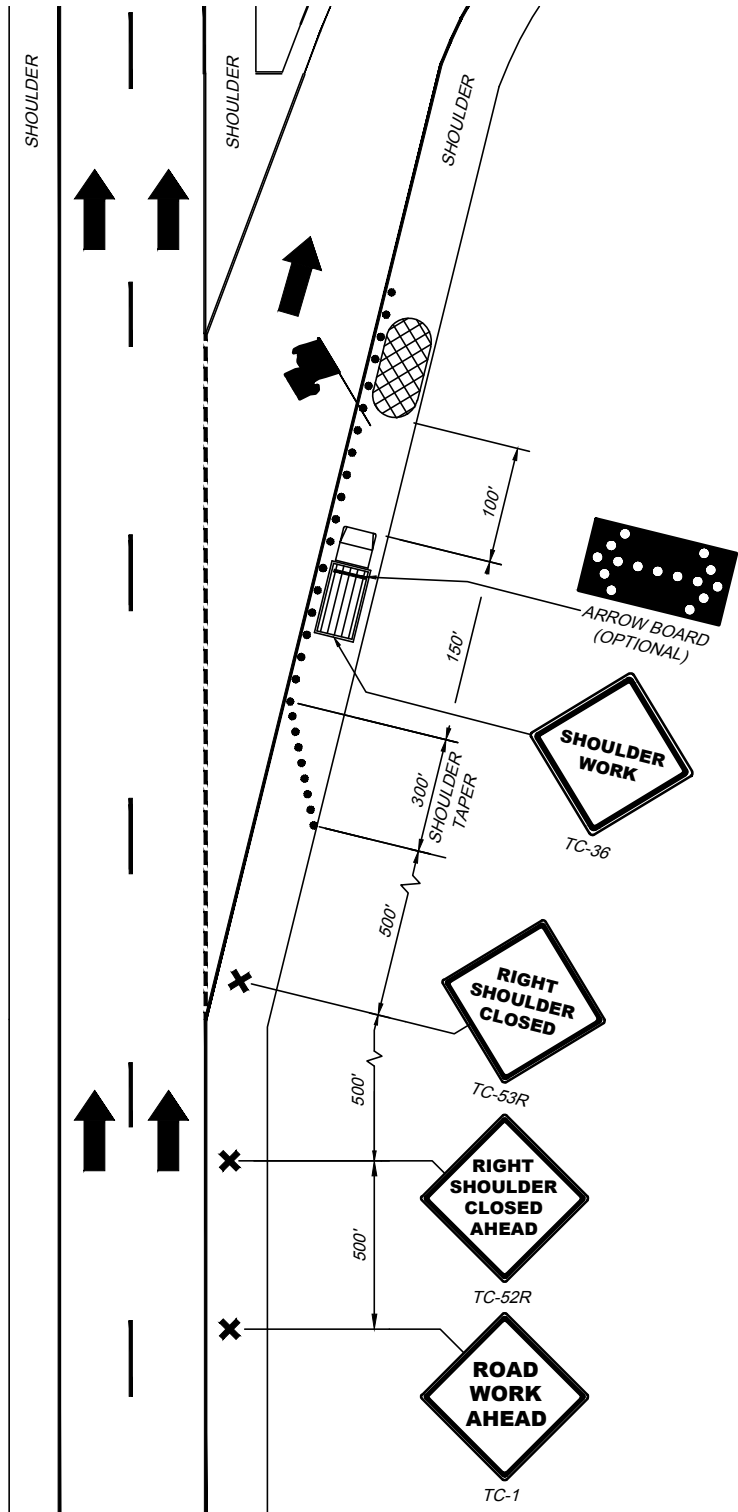


NOTES:

- SEE OTIC STANDARD DRAWING TCR-1 FOR ADDITIONAL NOTES AND DEFINITIONS.
- SEE OTIC STANDARD DRAWING TCR-2 FOR ADDITIONAL NOTES, DETAILS AND LEGEND.
- THE SHADOW VEHICLE CAN ALSO BE USED AS A WORK VEHICLE.

MOBILE OPERATION (SHOULDER)

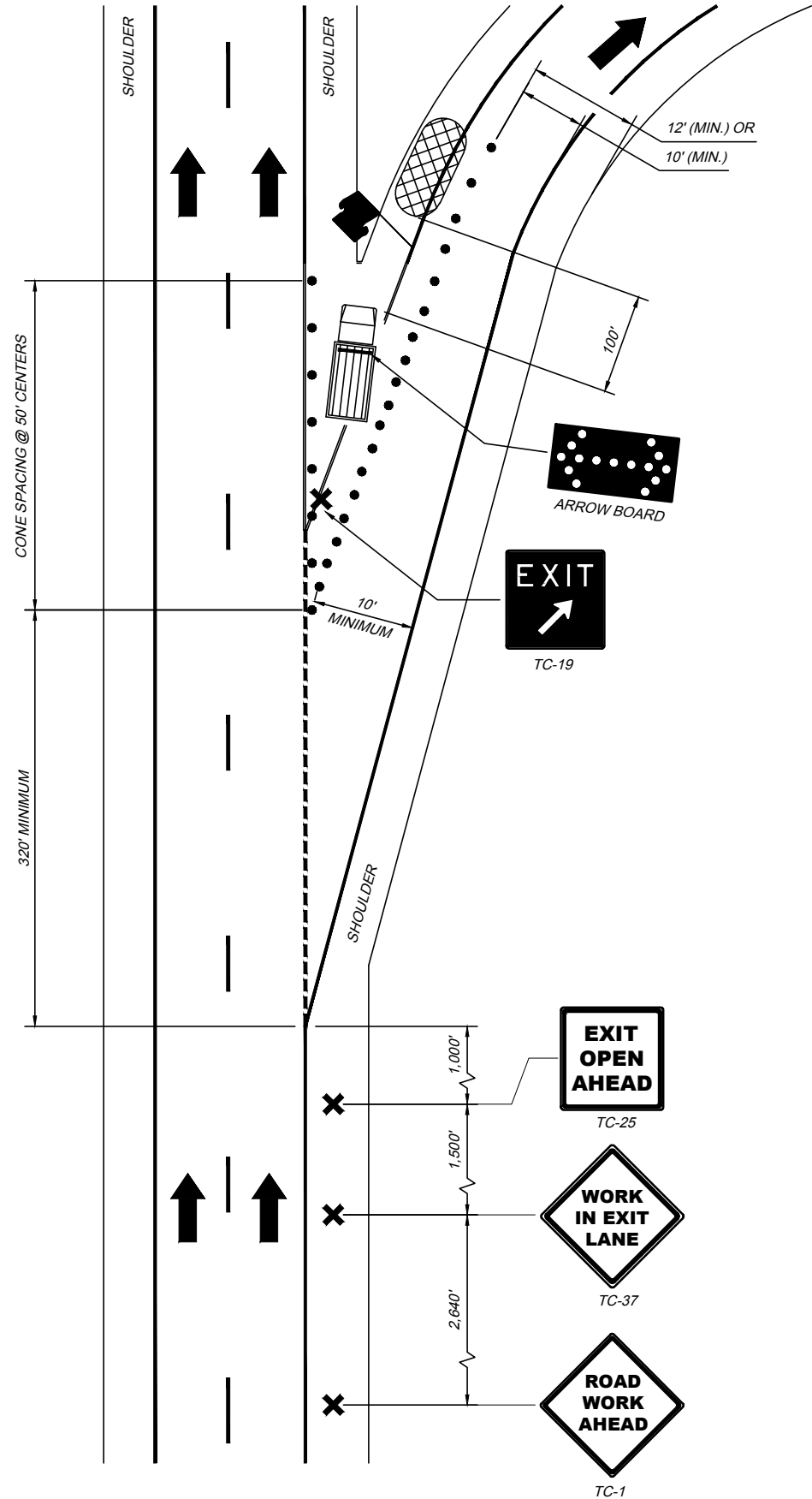




**NOTES:**

1. SEE OTIC STANDARD DRAWING TCR-1 FOR ADDITIONAL NOTES AND DEFINITIONS.
2. SEE OTIC STANDARD DRAWING TCR-2 FOR ADDITIONAL NOTES, DETAILS AND LEGEND.
3. FOR SHORT DURATION INTERMITTENT CLOSURES, WARNING SIGNS MAY BE OMITTED WHEN THE BARRIER VEHICLE DISPLAYS AMBER COLORED HIGH-INTENSITY ROTATING, FLASHING, OSCILLATING, OR STROBE LIGHTS PER TCR-1, IF THE DISTANCE BETWEEN WORK LOCATIONS IS ONE MILE OR MORE, AND IF THE WORK VEHICLE TRAVELS AT VEHICULAR TRAFFIC SPEEDS BETWEEN LOCATIONS.
4. VEHICLE HAZARD WARNING SIGNALS MAY BE USED TO SUPPLEMENT BUT NOT REPLACE THE AMBER COLORED HIGH-INTENSITY ROTATING, FLASHING, OSCILLATING, OR STROBE LIGHTS.
5. IF AN ARROW BOARD IS USED, THE CAUTION MODE SHALL BE USED. THE ARROW BOARD MAY BE MOUNTED ON THE BARRIER VEHICLE OR IT MAY BE TRAILER MOUNTED.
6. CONES SHALL BE SPACED 50 FEET CENTER TO CENTER. CONES MAY BE OMITTED FOR SHORT DURATION INTERMITTENT ZONES.

**RAMP SHOULDER CLOSURE**



**NOTES:**

1. SEE OTIC STANDARD DRAWING TCR-1 FOR ADDITIONAL NOTES AND DEFINITIONS.
2. SEE OTIC STANDARD DRAWING TCR-2 FOR ADDITIONAL NOTES, DETAILS AND LEGEND.
3. THE DOUBLE ARROW MODE OF THE ARROW BOARD SHALL BE USED.
4. CONES SHALL BE SPACED 20 FEET CENTER TO CENTER, EXCEPT AS SHOWN.