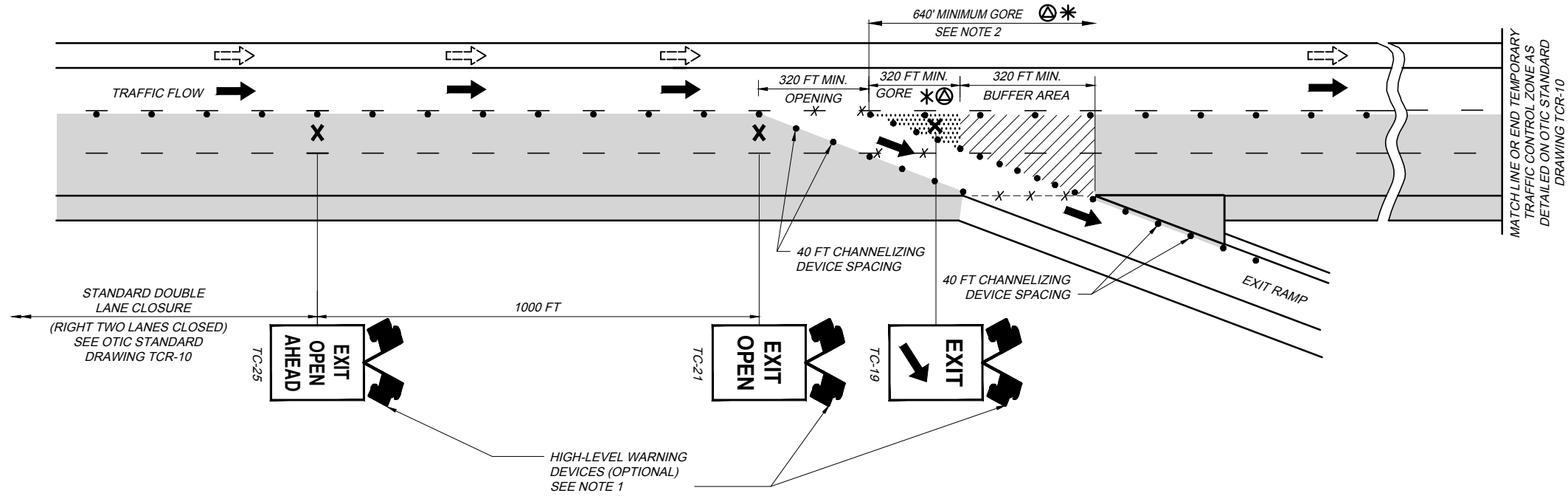
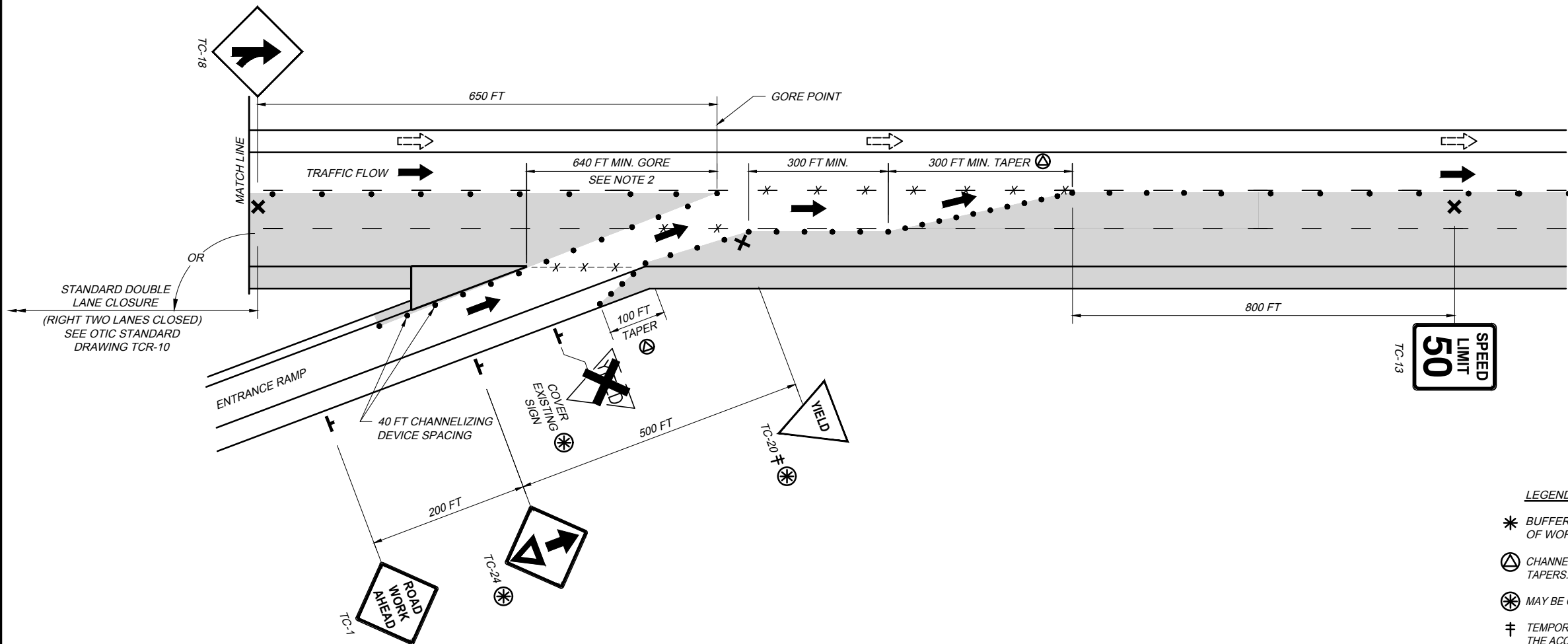


TCR-9.3 2017.10.20.dwg; 10/25/17 - 4:50 pm



NOTES:

1. A HIGH-LEVEL WARNING DEVICE SHALL CONSIST OF TWO FLAGS AT 45 DEGREES TO THE VERTICAL. THE DISTANCE FROM THE ROADWAY TO THE LOWEST POINT OF THE FLAG MATERIAL SHALL BE NOT LESS THAN 8 FEET. THE FLAGS SHALL BE 16 INCHES SQUARE OR LARGER AND SHALL BE ORANGE OR FLUORESCENT RED-ORANGE IN COLOR.
2. WHEN TRAFFIC IS REDUCED TO ONE LANE, MAINTAINED ON THE INSIDE MAINLINE SHOULDER, THE 640 FT. MINIMUM GORE SHALL BE INCREASED TO A 960 FT. MINIMUM GORE CROSSING THE THREE CLOSED LANES.
3. FOR LEGEND AND DETAILS, SEE OTIC STANDARD DRAWING TCR-2.
4. TC-1 AND TC-24 SIGNS MAY BE MOUNTED ON X-FOOT PRINT SIGN STANDS FOR SHORT TERM STATIONARY ZONES.
5. SEE OTIC STANDARD DRAWING TCR-1 FOR DEFINITIONS.



LEGEND

- * BUFFER SPACES AND EXIT RAMP GORES SHALL BE KEPT FREE OF WORK ACTIVITIES, EQUIPMENT, VEHICLES AND MATERIALS.
- ⊙ CHANNELIZING DEVICES SHALL BE SPACED AT 20 FEET FOR INDICATED TAPERS.
- ⊕ MAY BE OMITTED FOR SHORT TERM STATIONARY ZONE.
- ≠ TEMPORARY YIELD SIGN SHALL BE PLACED DIRECTLY ACROSS FROM THE ACCELERATION RAMP GORE POINT.
- X X X REMOVE LANE LINE, DOTTED LINES, AND RPM REFLECTORS (OMIT FOR SHORT AND INTERMEDIATE TERM STATIONARY ZONES).
- ⇨ ADDITIONAL LANE OF TRAFFIC ON INSIDE SHOULDER WHEN REQUIRED BY CONTRACT PLANS.

DATE: OCTOBER 20, 2017

STANDARD DRAWING

TEMPORARY TRAFFIC CONTROL
DOUBLE LANE CLOSURE AT EXIT AND ENTRANCE RAMP

TCR-9.3

1 / 1

OHIO TURNPIKE AND INFRASTRUCTURE COMMISSION

OHIO TURNPIKE

OHIO TURNPIKE