

TCR-11MZ 2025.06.10.dwg; 8/27/25 - 3:50pm

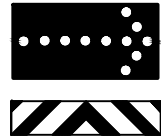
SINGLE LANE MOBILE OPERATION			
VEHICLE NUMBER	VEHICLE	ACTION	VEHICLE SPACING

1 WORK VEHICLE WITH FLASHING LIGHTS

2 SHADOW VEHICLE WITH TYPE C ARROW BOARD, SIGN AND TMA OR TTMA

3 SHADOW VEHICLE WITH TYPE C ARROW BOARD AND TMA OR TTMA (STRADDLES EDGE LINE)

4 ADVANCED WARNING VEHICLE WITH TYPE B ARROW BOARD AND SIGN (ON SHOULDER)



TC-39L

100'

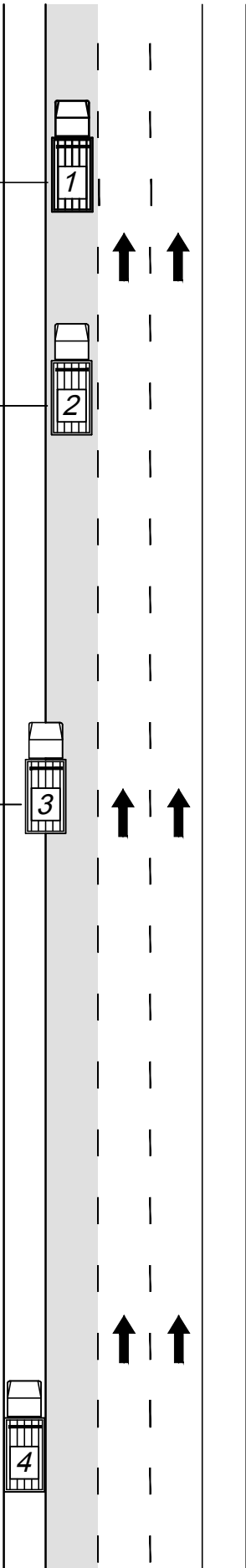
SEE NOTE - 3

250'

SEE NOTE - 4

400'

SEE NOTE - 5



LEFT LANE CLOSED

3 LANE ROADWAY

NOTES:

GENERAL: WHEN POSSIBLE, WORKERS SHALL EXIT WORK VEHICLE ON NON-TRAFFIC SIDE.

- SEE OTIC STANDARD DRAWING TCR-1 FOR ADDITIONAL NOTES AND DEFINITIONS.
- SEE OTIC STANDARD DRAWING TCR-2 FOR ADDITIONAL NOTES, DETAILS AND LEGEND.
- ADJUST AS NECESSARY TO PREVENT VEHICLE INTRUSION (NOT TO EXCEED 100').
- ADJUST AS NECESSARY TO PREVENT VEHICLE INTRUSION AND TO PROVIDE ADEQUATE SIGHT DISTANCE. (NOT TO EXCEED 250').
- ADVANCE WARNING VEHICLE 4 SHOULD TRAVEL AT A VARYING DISTANCE FROM THE WORK OPERATION SO AS TO PROVIDE ADEQUATE SIGHT DISTANCE FOR VEHICULAR TRAFFIC APPROACHING FROM THE REAR.

LEGEND

- MOVING ZONE - ROADWAY CLOSED TO TRAFFIC
- ARROW BOARD TYPE C AS INDICATED, PER CURRENT ODOT APPROVED LIST
- TRUCK-MOUNTED ATTENUATOR (TMA) OR TOWABLE TRAILER - MOUNTED ATTENUATOR (TTMA)

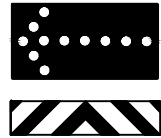
SINGLE LANE MOBILE OPERATION			
VEHICLE SPACING	ACTION	VEHICLE	VEHICLE NUMBER

WORK VEHICLE WITH FLASHING LIGHTS

SHADOW VEHICLE WITH TYPE C ARROW BOARD, SIGN AND TMA OR TTMA

SHADOW VEHICLE WITH TYPE C ARROW BOARD AND TMA OR TTMA (STRADDLES EDGE LINE)

ADVANCED WARNING VEHICLE WITH TYPE B ARROW BOARD AND SIGN (ON SHOULDER)



TC-39R

100'

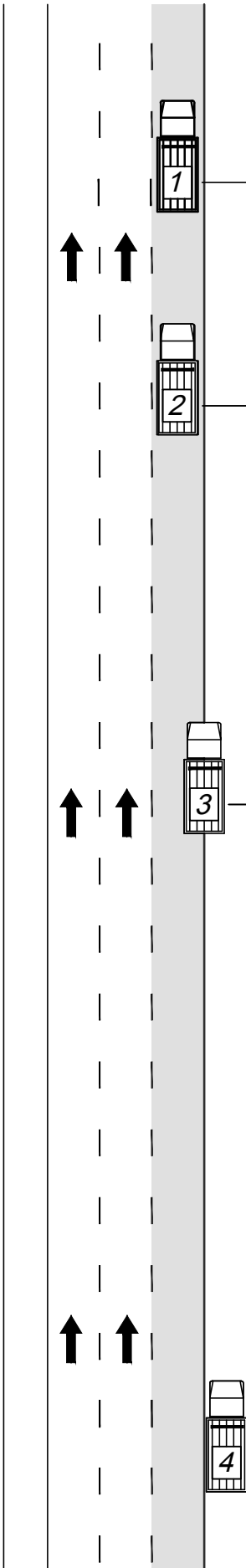
SEE NOTE - 3

250'

SEE NOTE - 4

400'

SEE NOTE - 5



RIGHT LANE CLOSED

3 LANE ROADWAY

TEMPORARY TRAFFIC CONTROL
FOR SINGLE LANE MOBILE OPERATION

TCR-11MZ

1 / 1

DATE: JUNE 10, 2025

STANDARD DRAWING



OHIO TURNPIKE AND INFRASTRUCTURE COMMISSION

