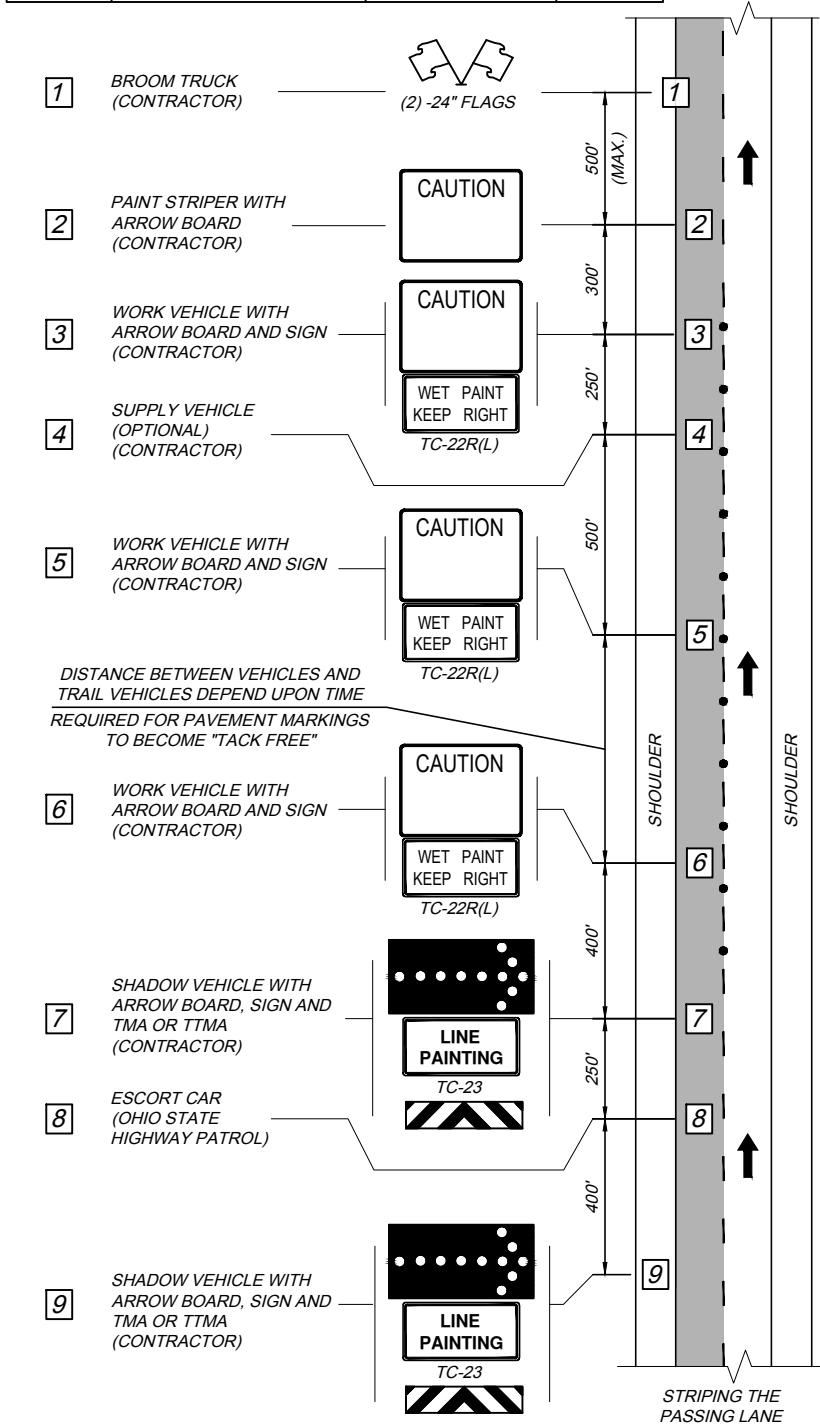


PAVEMENT STRIPING MOVING ZONE

VEHICLE NUMBER	VEHICLE	ACTION	VEHICLE SPACING
----------------	---------	--------	-----------------

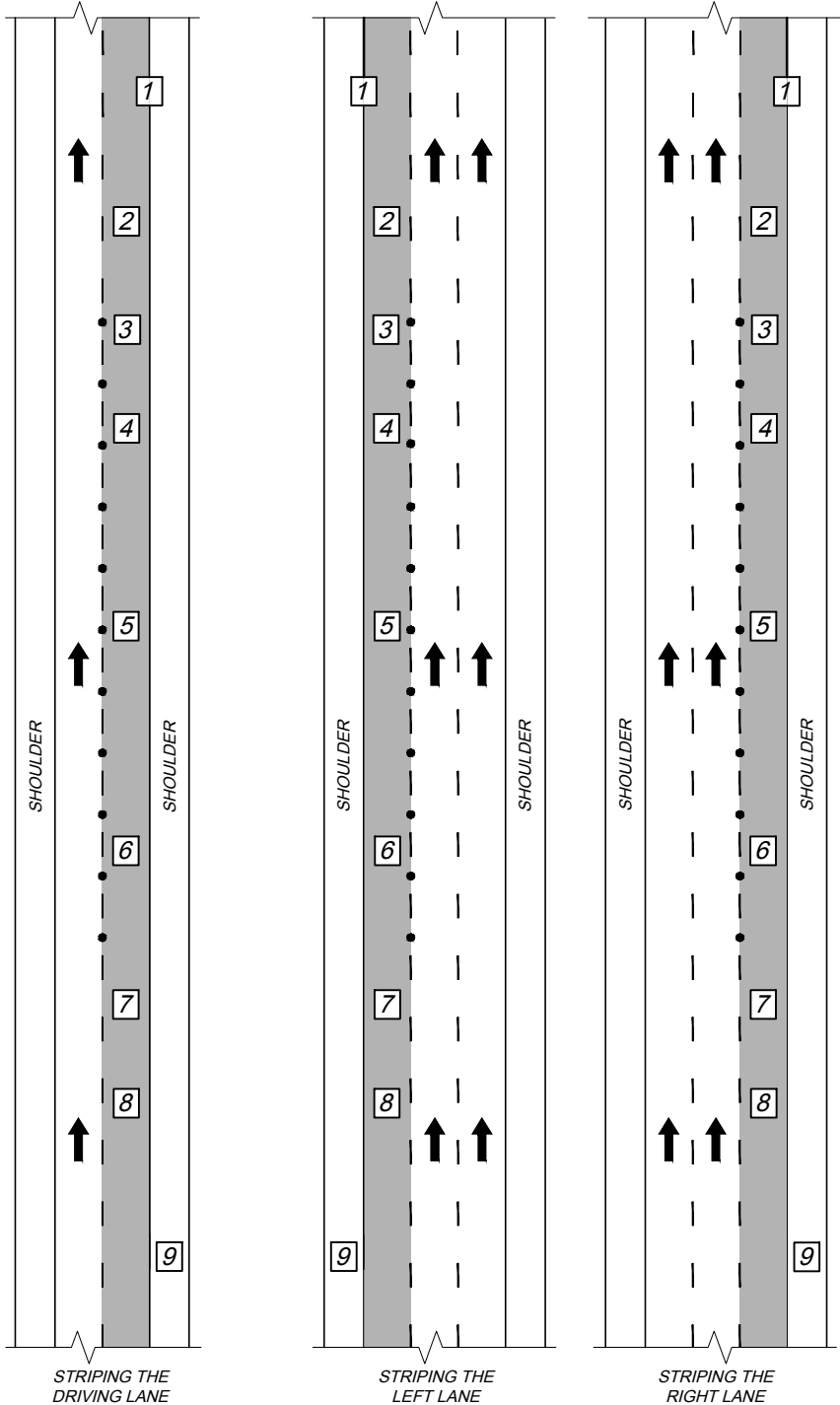


2 LANE ROADWAY

LEGEND

- TRAFFIC CONES IF REQUIRED, (CONTRACTOR)
- MOVING ZONE - ROADWAY CLOSED TO TRAFFIC
- ARROW BOARD TYPE C PER CURRENT ODOT APPROVED LIST (CAUTION MODE)
- ARROW BOARD TYPE C PER CURRENT ODOT APPROVED LIST
- TRUCK-MOUNTED ATTENUATOR (TMA) OR TOWABLE TRAILER-MOUNTED ATTENUATOR (TTMA)

STANDARD ZONE

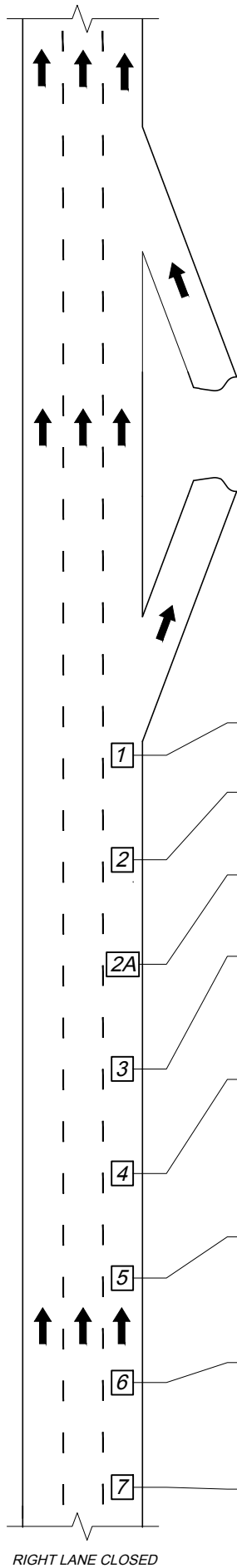


3 LANE ROADWAY

NOTES:

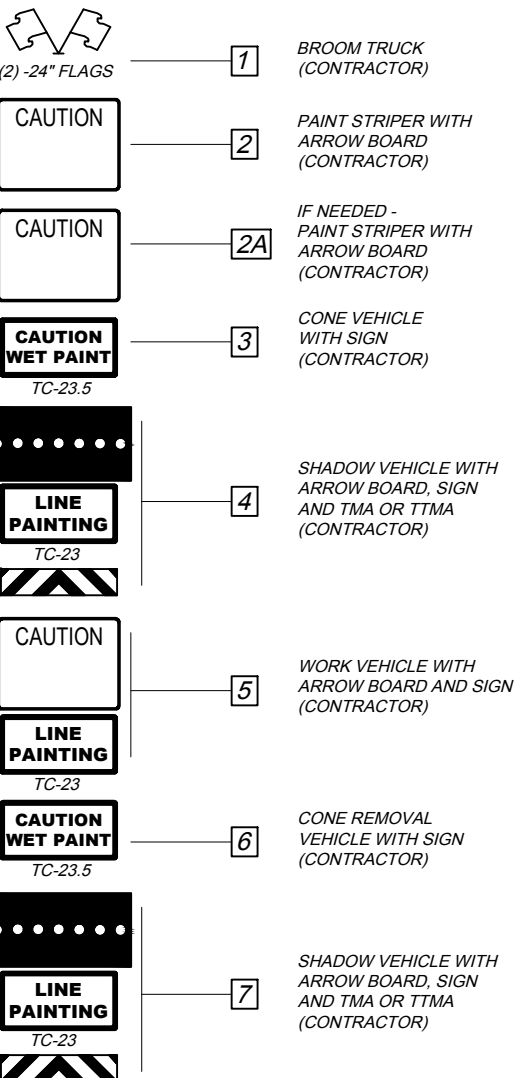
- SEE OTIC STANDARD DRAWING TCR-1 FOR ADDITIONAL NOTES AND DEFINITIONS.
- SEE OTIC STANDARD DRAWING TCR-2 FOR ADDITIONAL NOTES, DETAILS AND LEGEND.
- INSPECTOR'S VEHICLE LOCATED IN ZONE (AS REQUIRED).
- ARROW BOARD AND SIGNS SHALL BE VEHICLE MOUNTED.
- SHADOW VEHICLE [9] MAY STRADDLE THE EDGE LINE WHERE ADEQUATE WIDTH IS NOT AVAILABLE.
- IF AN ADDITIONAL PAINT STRIPER WITH ARROW BOARD IS USED, THEN IT SHALL BE 300' BEHIND [2] AND 300' IN FRONT OF [3].

SPECIAL ZONE AT PLAZA RAMP



NOTES:

- SEE OTIC STANDARD DRAWING TCR-1 FOR ADDITIONAL NOTES AND DEFINITIONS.
- SEE OTIC STANDARD DRAWING TCR-2 FOR ADDITIONAL NOTES, DETAILS AND LEGEND.
- APPLICATION OF PAVEMENT MARKINGS ON MAINLINE ROADWAY AT PLAZA AREAS SHALL BE PERFORMED UNDER THE PROTECTION OF A STANDARD OTIC WORK ZONE.
- VEHICLE 5 WILL PULL OUT OF THE TRAIN AT THE DECEL RAMP AND SIT BETWEEN THE DECEL AND ACCEL RAMP VEHICLE 5 WILL USE THEIR ARROW TO PUSH TRAFFIC OVER.



JUNE 10, 2025

DATE:

STANDARD DRAWING

TEMPORARY TRAFFIC CONTROL  
PAVEMENT STRIPING MOVING ZONE

TCR-11PS

1 / 1



OHIO TURNPIKE AND INFRASTRUCTURE COMMISSION

