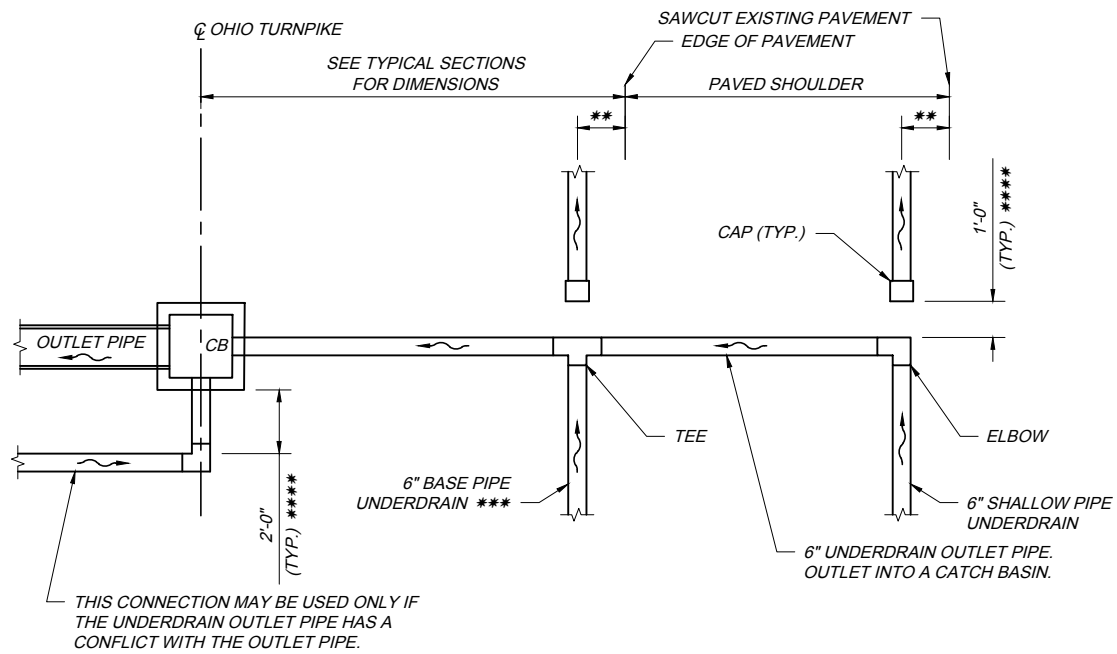


- LEGEND**
- "A" - 4" MINIMUM FOR 6" Ø CONDUIT
 - "B" - 14" MINIMUM FOR 6" Ø CONDUIT
 - "C" - 0" TO 3" MAXIMUM
 - * - 6" MINIMUM TO 14" MAXIMUM OVERLAP
 - ** - SEE TYPICAL SECTIONS FOR OFFSET DISTANCE
 - *** - CONTRACTOR SHALL TRANSITION DEPTH OF UNDERDRAIN FROM THE BASE/SHALLOW PIPE UD TO THE UNDERDRAIN OUTLET PIPE WITHIN TEN (10) FEET WHEN UNDERDRAIN OUTLETS INTO A PRECAST REINFORCED CONCRETE OUTLET. REFER TO TYPICAL SECTIONS FOR A REVISED LOCATION WHEN THERE IS NO BARRIER/GUARDRAIL ALONG THE OUTSIDE OF THE SHOULDER.
 - **** - TRENCH AND GRANULAR MATERIAL SHALL CONTINUE BETWEEN RUNS OF UNDERDRAIN.

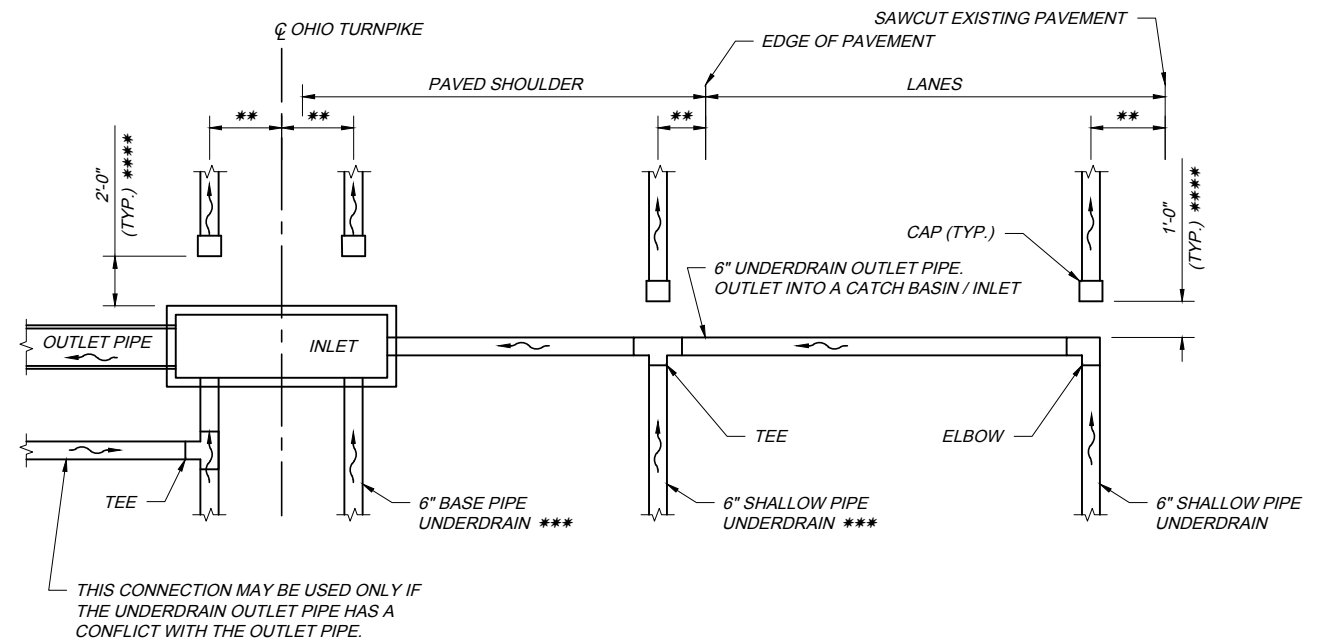
NOTES:

DESCRIPTION: THIS ITEM SHALL CONSIST OF FURNISHING AND INSTALLING A PIPE UNDERDRAIN SYSTEM IN ACCORDANCE WITH THE SPECIFICATIONS, SPECIAL PROVISIONS AND THE DETAILS ON THE PLANS OR AS DIRECTED BY THE CHIEF ENGINEER. THE LOCATION AND DEPTH OF UNDERDRAIN AND THE PAVEMENT BUILD-UP SHALL FOLLOW THE ROADWAY TYPICAL SECTIONS.

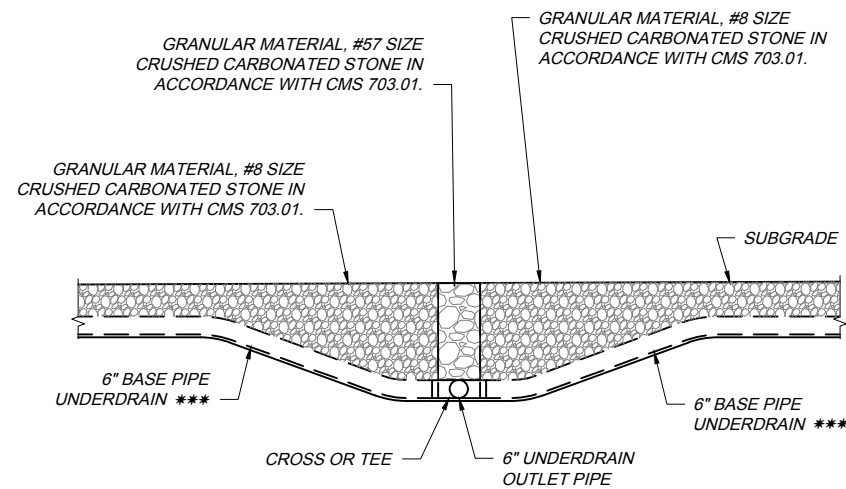
UD1 2018.09.19.dwg; 9/26/18 - 2:07pm



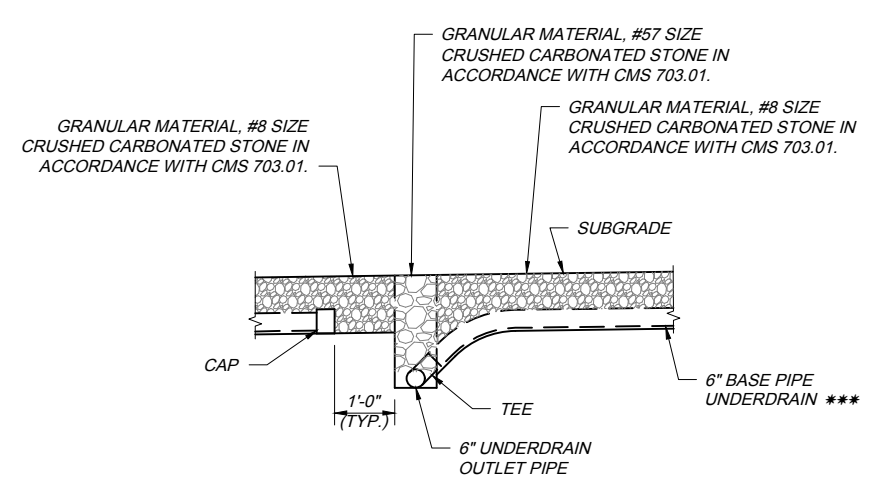
MEDIAN / 3RD LANE DETAIL
(END OF RUN - CONNECTION TO CATCH BASIN)



MEDIAN / 3RD LANE DETAIL
(END OF RUN - CONNECTION TO MEDIAN INLET)



SECTION A-A ***
(END OF RUN - CONNECTION TO
6" UNDERDRAIN OUTLET PIPE)



SECTION B-B ***
(END OF RUN - CONNECTION TO
6" UNDERDRAIN OUTLET PIPE)

NOTES:
FOR NOTES AND LEGEND, SEE SHEET 1 OF 2.