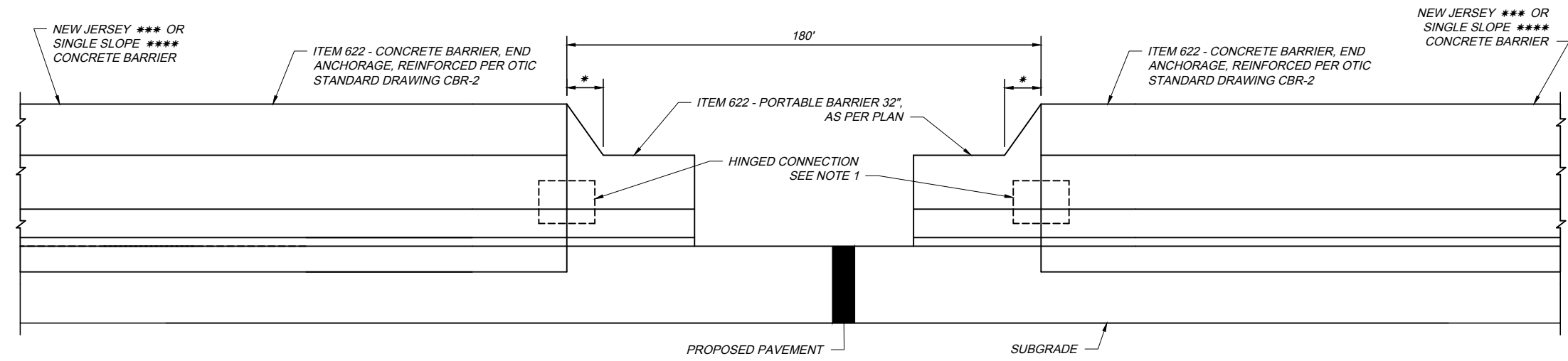


MAINTENANCE CROSSOVER - PLAN



MAINTENANCE CROSSOVER - ELEVATION

NOTES:

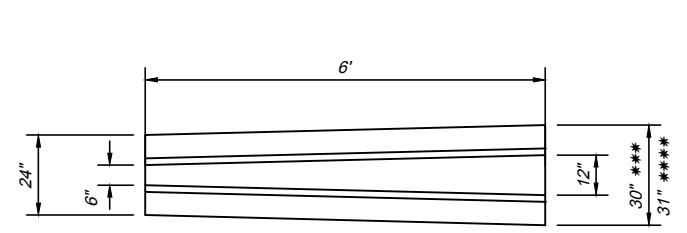
- HINGED BAR PLACEMENT: REFER TO HINGED CONNECTION DETAIL ON ODOT STANDARD DRAWING RM-4.1. HINGED CONNECTION IS INCLUDED IN THE UNIT PRICE BID FOR ITEM 622 - PORTABLE BARRIER 32", AS PER PLAN.
- ITEM 622 - PORTABLE BARRIER 32", AS PER PLAN. THIS ITEM SHALL BE AS PER SECTION 622 OF THE CMS AND AS SHOWN ON ODOT STANDARD DRAWING RM-4.2. THE BARRIER SHALL BE NEW AND LEFT IN PLACE UPON COMPLETION OF THE WORK. THE UNIT PRICE BID FOR ITEM 622 - PORTABLE BARRIER 32", AS PER PLAN SHALL INCLUDE ALL MATERIAL AND LABOR REQUIRED INCLUDING DELINEATORS AND THE 6' TRANSITION BARRIER. DELINEATORS SHALL MEET THE REQUIREMENTS OF SP 626.
- A 6' SECTION OF TRANSITION BARRIER SHALL BE PROVIDED ACCORDING TO ODOT STANDARD DRAWING RM-4.1 AND THIS STANDARD DRAWING, VIEW A-A ** AND VIEW B-B ***. THIS 6' SECTION SHALL MATCH BOTH ITEM 622 - PORTABLE BARRIER, 32", AS PER PLAN AND ITEM 622 - CONCRETE BARRIER, TYPE B-50, AS PER PLAN.
- A 6' SECTION OF TRANSITION BARRIER SHALL BE PROVIDED ACCORDING TO ODOT STANDARD DRAWING RM-4.1 AND THIS STANDARD DRAWING, VIEW A-A ** AND VIEW B-B ***. THIS 6' SECTION SHALL MATCH BOTH ITEM 622 - PORTABLE BARRIER, 32", AS PER PLAN AND ITEM 622 - CONCRETE BARRIER, SINGLE SLOPE, TYPE B-50, AS PER PLAN.

NOTE:

- * 6' TRANSITION SECTION
- ** ITEM 622 - CONCRETE BARRIER 32", AS PER PLAN
- *** ITEM 622 - CONCRETE BARRIER, TYPE B-50, AS PER PLAN
- **** ITEM 622 - CONCRETE BARRIER, SINGLE SLOPE, TYPE B-50, AS PER PLAN

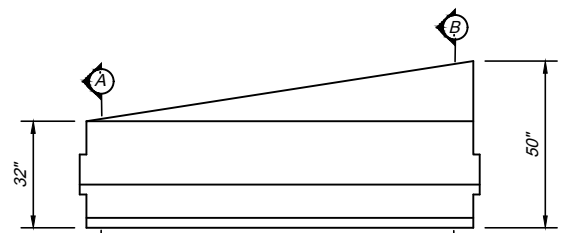
LEGEND:

- 1 - 1" RADIUS OR 3/4" CHAMFER, ALL TOP AND END CORNERS
- 2 - PERMISSIBLE 10" RADIUS
- 3 - PERMISSIBLE 1" RADIUS



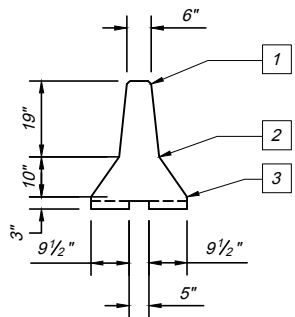
PLAN VIEW

6' TRANSITION SECTION
(32" TO TYPE B-50 SHOWN, SEE NOTE 3)
(32" TO SINGLE SLOPE B-50 SIMILAR, SEE NOTE 4)



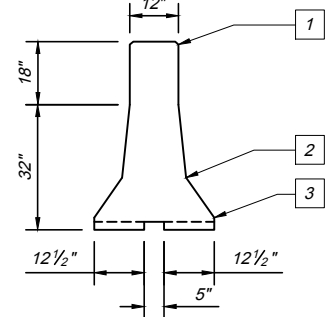
ELEVATION VIEW

6' TRANSITION SECTION
(32" TO TYPE B-50 SHOWN, SEE NOTE 3)
(32" TO SINGLE SLOPE B-50 SIMILAR, SEE NOTE 4)



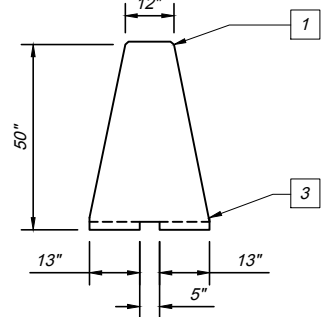
A-A VIEW **

* SEE NOTE 2



B-B VIEW ***

* SEE NOTES 2 AND 3



B-B VIEW ****

* SEE NOTES 2 AND 4

XOV-3 2018.09.19.DWG: 2/25/19 - 11:13am